

TL-5600

Flush-mounting Combination
Digital Conference System



GONSIN[®]
Delivering Trust & Value



TL-5600 Flush-mounting Combination Digital Conference System

GONSIN TL-5600 digital conference system is designed to provide a versatile flush mounting solution including five function modules include basic module, simultaneous interpretation module, voting module, extended handheld voting keypad module, loudspeaker module. All these modules are self-contained and can be flexibly configured, enabling conference terminals to offer more or less functions. Discussion unit allows the delegate to talk and request to talk, with automatic video tracking and a RJ-45 expansion port for additional plug-and-play handheld voting keypad. Channel selection unit offers 6 channels for participants to hear the selected channel through a personal headphone and adjust the volume level for comfortable listening. Voting unit is used for attendance registration, voting, election and evaluation. Loudspeaker can be added to the discussion unit depending on the venue needs.



◆ System Features

◆ Flexible module-based solution

Five function modules can be stand-alone installed or easily combined to meet the exact customer needs, offering a versatile conference solution.



◆ Smart voice activation mode

The system can be operated under VOX mode so that the microphone is automatically turned on when the delegate speaks. VOX sensitivity can be set to H/M/L to suit conference environment. Voice activation mode enables hands-free operation without pushing the microphone button.



◆ Future-proof system expansion

TL-5600 system offers perfect solution to upgrade the system and extend more features when it's necessary. Expansion port is designed to easily connect plug-and-play handheld module.



◆ Product Features

- ◆ Elegant and fashion design
- ◆ Exquisite manufacturing process
- ◆ Flexible module-based solution
- ◆ Expansion interface for system upgrading
- ◆ LED indicator for working status
- ◆ Channel, volume and VOX sensitivity displayed on LCD screen
- ◆ Volume of loudspeakers can be set individually or together
- ◆ Multiple chairman or vice chairman units are allowed
- ◆ Support auto camera tracking function (SD and HD)
- ◆ Electret cardioid pickup pattern microphone, rich timbre
- ◆ Pluggable microphone stem with red indicator light ring
- ◆ Highly resistant to mobile phone interference

◆ Discussion Unit

TL-VDQ5600/ TL-VXQ5600

Delegate discussion unit (TL-VDQ5600) allows the delegate to talk, request to talk, and register attendance. 1 to 4 delegate microphones can be active simultaneously. Built-in loudspeaker automatically mutes when the microphone is turned on. Chairman discussion unit (TL-VXQ5600) has the additional priority button to override all active delegate units to control the conference. Multiple chairman and vice-chairman discussion units can be used in one system, and can be active at any time regardless of preset delegate microphone limit.



TL-VXQ5600

◆ Basic Functions

- ◆ In compliance with IEC60914 international standard
- ◆ Compact black panel for flush mounting, LED indicator with working status
- ◆ Physical Mic button utilizes touch design, with concise appearance, convenient operation, accurate response and long service life
- ◆ Automatic restoration function: supports hot plug
- ◆ It can connect to the voting module and handheld voting module to realize function expansion
- ◆ It connects to the connector with audio cable, which is easy for wiring and convenient for construction management
- ◆ Standard electret cardioid pickup pattern microphone with indicating light ring. Several kinds of soft gooseneck microphone stems for various conferences (standard: 410mm, optional: 310mm/510mm)
- ◆ Pluggable gooseneck microphone stem, convenient for equipment maintenance
- ◆ Highly resistant to mobile phone interference
- ◆ Built-in high-speed DSP digital audio processor, which can filter out invalid low-frequency components in the sound, avoid low-frequency impact sound, and improve the clarity of the sound
- ◆ The basic discussion module comes with an RJ45 expansion interface, which can expand the plug-and-play hand-held voting module to realize voting, election, and evaluation functions; The voting process is more confidential and the system upgrade is more convenient
- ◆ Expansion interface with a protective function to prevent foreign objects from entering the interface, making the product more durable
- ◆ Attendance registration function: key to register, supplementary register or revocatory register

- ◆ Optional HD video camera tracking matrix ,switcher or HD camera, can realize HD automatic camera tracking, supporting preset overall view
- ◆ 4*1+1 video matrix is built in the Central Control Unit, and standard definition video conference camera is selected, which can realize automatic camera tracking function of standard definition and support preset overall view
- ◆ Discussion function: support Operator, Auto, FIFO, VOX , and Request to speak (with software)
- ◆ In VOX mode, microphones will be activated as users speak. VOX sensitivity (high/middle/low) and microphone time-out(6-180 seconds) can be adjusted by the server.
- ◆ 1-4 delegate unit can be used simultaneously (except chairman unit);chairman/vice chairman unit are not subject to active mic limit, it's allowed to open at any time.
- ◆ The system can have multiple chairman units; delegate unit can be set as vice-chairman units. Numbers of chairman and vice-chairman units are unlimited.



TL-VDQ5600

The chairman unit has exclusive functions below:

- ◆ Chairman units can be activated at any time without presetting mic limit
- ◆ Chairman unit has priority key to override all active delegate units

◆ Technical Specifications

Installation	Flush Mounting
Connection Method	Specialized cable, audio cable
Color	Black
Frequency Response	20Hz~20kHz
Sensitivity	-46±4dBV/Pa
Equivalent Noise Level	20dBA (SPL)
Maximum SPL	125dB (THD<3%)
Total Harmonic Distortion	<0.05%
SNR	≥96dB
Microphone Type	Cardioid Directional Electret
Directionality	0°/180°: >20 dB (1kHz)
Microphone Stem Length	standard: 410mm, optional: 310mm/510mm
Input Impedance	2kΩ
Dimensions (L×W×H)	100×40×60mm
Opening Size (L×W×H)	124±4×33±2mm (desktop thickness ≥15mm)
Weight	80g
Operating Temperature	0~45℃
Storage Temperature	-20~50℃



Flush Voting Unit

BJ-Q5600



Basic Functions

- ◆ In compliance with IEC60914 international standard
- ◆ Compact black panel for flush mounting, LED indicator with working status
- ◆ Physical Mic button utilizes touch design, with concise appearance, convenient operation, accurate response and long service life
- ◆ Automatic restoration function: supports hot plug
- ◆ It can connect to the basic discussion module to realize function expansion
- ◆ It connects to the connector with audio cable, which is easy for wiring and convenient for construction management
- ◆ Expansion interface with a protective function to prevent foreign objects from entering the interface, making the product more durable
- ◆ Attendance registration function: key to register, plug-in card to register(according number),plug-in card to register(non-according number) , supplementary register or revocatory register.
- ◆ Voting: delegate can vote for Yes, No, Abstain. First key-press and final key-press voting are available
- ◆ Election: elect one or more out of N candidates, with 'competitive election', 'equal number election' and 'quick election'
- ◆ Evaluation: four buttons to evaluate. It comes with four choices "Good", "Fair", "Poor", "Abstain"
- ◆ Utilize data encryption and anti-restoration technique to ensure information security
- ◆ Customized voting options and voting methods, support customized language mode or display Screen

Technical Specifications

Installation	Flush Mounting
Connection Method	Specialized cable
Color	Black color
Size (L×W×H)	100×40×60mm
Opening Size (L×W×H)	124±4×33±2mm (desktop thickness≥15mm)
Weight	80g
Operating Temperature	0~45℃
Storage Temperature	-20~50℃



Handheld Voting Keypad

BJ-K5600



Basic Functions

- ◆ In compliance with IEC60914 international standard
- ◆ Compact handheld voting module, connected to the basic discussion module, with LED indicator for working status
- ◆ Physical Mic button utilizes touch design, with concise appearance, convenient operation, accurate response and long service life
- ◆ Automatic restoration function: supports hot plug
- ◆ Attendance registration function: key to register, supplementary register or revocatory register.
- ◆ Voting: delegate can vote for Yes, No, Abstain. First key-press and final key-press voting are available
- ◆ Election: elect one or more out of N candidates, with 'competitive election', 'equal number election' and 'quick election'
- ◆ Evaluation: four buttons to evaluate. It comes with four choices "Good", "Fair", "Poor", "Abstain"
- ◆ Utilize data encryption and anti-restoration technique to ensure information security
- ◆ Customized voting options and voting methods, support customized language mode or display Screen

Technical Specifications

Installation	Handheld
Connection Method	RJ45
Color	Black
Size (L×W×H)	120×55×15mm
Weight	100g
Operating Temperature	0~45℃
Storage Temperature	-20~50℃



◆ Channel Selection Unit

TC-Q5600



◆ Basic Functions

- ◆ In compliance with IEC60914 international standard
- ◆ Compact black panel for flush mounting, the LCD screen can display the language channel and volume, and the voice control sensitivity of the basic discussion module
- ◆ Physical Mic button utilizes touch design, with concise appearance, convenient operation, accurate response and long service life
- ◆ Automatic restoration function: supports hot plug
- ◆ It connects to the connector with specialized cable and audio cable, which is easy for wiring and convenient for construction management
- ◆ Highly resistant to mobile phone interference
- ◆ Simultaneous interpretation function: 6 (1+5) channel
- ◆ Built-in simultaneous interpretation channel selector, press the button to select the language channel and adjust the volume
- ◆ Audio frequency response of simultaneous interpretation channel can reach 20Hz~20kHz

◆ Technical Specifications

Installation	Flush Mounting
Connection Method	Specialized cable and audio cable
Color	Black
Display Parameters	Size: 17×14mm; Black on white background
Audio Frequency Response	20Hz~20kHz
Total Harmonic Distortion	0.05%
Signal-to-noise ratio	≥96dB
Simultaneous Interpretation Channels	6 channels
Headphone/Speaker Interface	Ø3.5 mm jack×2
Headphone Load	16Ω
Headphone Volume	10mW
Dimensions (L×W×H)	100×40×60mm
Opening Size (L×W×H)	124±4×33±2 (desktop thickness≥15mm)
Weight	60g
Operating Temperature	0~45℃
Storage Temperature	-20~50℃



Loudspeaker SPK-10



Basic Functions

- ◆ In compliance with IEC60914 international standard
- ◆ Compact black panel for flush mounting
- ◆ Automatic restoration function: supports hot plug
- ◆ It connects to the connector with audio cable, which is easy for wiring and convenient for construction management
- ◆ Highly resistant to mobile phone interference
- ◆ Speaker volume can be set individually or adjusted uniformly through the main controller or software
- ◆ Speaker (2W) adopts tilting angle design, reasonable cavity design, clear and bright sound
- ◆ When the microphone is on, the speaker is automatically turned off, preventing sound feedback and the occurrence of howling

Technical Specifications

Installation	Flush Mounting
Connection method	Audio Cable
Color	Black
Speaker	2W/8Ω
Dimensions (L×W×H)	100×40×60mm
Hole Dimension (L×W×H)	124±4×33±2mm (desktop thickness≥15mm)
Weight	0.09Kg
Operating Temperature	0~45℃
Storage Temperature	-20~50℃

Connector

CON-5600



Basic Functions

- ◆ In compliance with IEC60914 international standard
- ◆ Use with basic discussion module, voting module, simultaneous interpretation module and speaker module
- ◆ Realize the power supply of each module and the communication with the central control unit, and realize the functions of each module
- ◆ Each unit adopts the T-shaped hand-in-hand connection, easy wiring, make convenient construction
- ◆ Unique ID number, the conference system supports automatically or manually assigns ID to the corresponding equipment

Technical Specifications

Installation	hidden installation
Connection method	Specialized 8-pin/13-pin connector
Number of interface	6
Color	black
Size (L×W×H)	210×160×40mm
Weight	1.083kg
Power Supply	24V
Maximum Power Consumption	<5W
Operating Temperature	0~45℃
Storage Temperature	-20~50℃



▶ **Preview of 5600 series with multiple combination functions**

▶ **Basic Discussion Module**



TL-VDQ5600



TL-VDQ5600+SPK-10

▶ **Discussion&Voting Module**



TL-VDQ5600+BJ-Q5600



TL-VDQ5600+BJ-Q5600+SPK-10



TL-VDQ5600+BJ-K5600



TL-VDQ5600+BJ-K5600+SPK-10

▶ **Discussion&Interpretation Module**

▶ **Voting&Interpretion Module**



TL-VDQ5600+TC-Q5600



TL-VDQ5600+TC-Q5600+SPK-10



BJ-Q5600+TC-Q5600

▶ **Discussion & Voting & Interpretation Module**



TL-VDQ5600+BJ-Q5600+TC-Q5600



TL-VDQ5600+BJ-Q5600+TC-Q5600+SPK-10



TL-VDQ5600+BJ-K5600+TC-Q5600



TL-VDQ5600+BJ-K5600+TC-Q5600+SPK-10

Central Control Unit



The brand new design GONSIN central control unit adopts integrated tempered glass panel and navigational rotary knob design, clear layout and user-friendly. One central control unit is able to accommodate 60-70 microphones. By cascading extension units, the system can support up to 4096 conference units. The central control unit has built-in 4×1 SD video matrix, to support SD video tracking with adding SD cameras; it also supports extended HD video matrix. Built-in DSP digital audio processor is used for feedback prevention, when the sound environment is not ideal, turn on DSP function to avoid feedback. Built-in treble/bass compensation for better sound quality. VOX sensitivity, built-in loudspeaker volume and LCD screen contrast are adjustable by central control unit or by each unit. Unit ID number writing is also included.

◆ Features

- ◆ Black tempered glass panel design, simple and high-end design. All the function divisions are clearly layout and easy to operate.
- ◆ Built-in DSP processor for acoustic feedback prevention.
- ◆ Built-in OLED screen to display system set status.
- ◆ VOX sensitivity adjustable.
- ◆ Built-in 4×1 SD video matrix, and support extended HD video matrix.
- ◆ Supportive SD and HD camera tracking.
- ◆ Built-in treble/bass compensation for better sound quality.
- ◆ Support clock and calendar function,
- ◆ Support plug-in USB disk for audio recording.

Central Control Unit

TL-Z4



Basic functions

- ◆ In compliance with IEC60914 international standard
- ◆ With full digital audio technology, built-in high-speed CPU and high-performance DSP digital audio processor, CD sound quality.
- ◆ Acoustic frequency response can up to 20Hz~20KHz.
- ◆ Black tempered glass panel design, simple and high-end design. All the function divisions are clearly layout and easy to operate.
- ◆ The sever comes with built-in OLED panel to display system status, active mic, speaking mode. Language supports Chinese/ English. Russia, Spanish can be customized.
- ◆ Navigation knob for more convenient operation and management
- ◆ 4 route port to connect conference units, the system has auto-repair function, support hot plug-and-play.
- ◆ One central control unit is able to accommodate 60-70 microphones. By cascading extension units, the system can support upto 4096 conference units.
- ◆ Universal voltage power switch for wider usable range and sufficient power supply.
- ◆ Support USB auto recording: after the front panel is inserted U disk, audio recording can be set automatically or manually. The recording status can be displayed in real time.
- ◆ Optional HD video camera tracking matrix ,switcher or HD camera, can realize HD automatic camera tracking, supporting preset overall view.
- ◆ 4*1+1 video matrix is built in the Central Control Unit, and standard definition video conference camera is selected, which can realize automatic camera tracking function of standard definition and support preset overall view.
- ◆ Input port for external audio signal: for alarm audio, PA, and other audio systems, the conference units can output audio signals synchronously.
- ◆ Internal clock and calendar, it will be displayed on central control unit, conference units.
- ◆ Built-in auto-detection fo conference units; before conferences, self-test can be run for each conference units.
- ◆ TCP/IP PC communication between central control unit and PC, which can achieve control management, remote fault diagnosis and remote update.

■ Stand-alone Mode Functions:

- ◆ ID number writing: the conference system supports automatically or manually assign ID to the corresponding equipment.
- ◆ All or individual units' VOX sensitivity are adjustable (apply to 5600 series)
- ◆ LCD screen contrast of Unit is adjustable (apply to 4200 series)

- ◆ Speaking mode: Operator, Auto, FIFO, VOX, request to speak (with software).
- ◆ VOX function: in VOX mode, the unit will be activated when user speaks; VOX sensitivity can be adjust by the server (high, middle, low); microphone time-out is adjustable (6-180 seconds).
- ◆ 1-4 delegate unit can be used simultaneously (except chairman unit); chairman/vice chairman unit are not subject to active mic limit, it's allowed to open at any time.
- ◆ The system can have multiple chairman units; delegate unit can be set as vice-chairman units. There are unlimited chairman and vice-chairman units.

■ **Extended functions under PC and software control**

- ◆ Register function and real-time participants statistics.
- ◆ Centralized conference management, operator can allow or reject delegate request to talk.
- ◆ Speaking time limit can be preset for conference units; After the speaking time is up, the conference unit will be off.
- ◆ Conference audio recording and video recording(need audio video capture card)
- ◆ Delegate unit can be set to be vice-chairman units by software; vice-chairman unit is not subject to active mic limit.
- ◆ Support management software dual-system hot backup function; One control computer can be set as backup and connect to the system; if the current computer has faults, the backup computer can be automatically hosted to ensure the smooth and continuous meeting.
- ◆ Conference management software can be customized.

◆ Central Control Unit

TL-ZB4



◆ Basic functions

■ **Based on functions of Central Control Unit TL-Z4, Central Control Unit TL-ZB4 has functions below:**
Extended functions under PC and software control

- ◆ Voting: Yes, No, Abstain . Vote counting and result display are enabled automatically by PC
 - Single-choice and multiple-choice voting
 - First key-press and final key-press voting
- ◆ Election: elect one or more out of N candidates, with 'competitive election', 'equal number election' and 'quick election'
- ◆ 4-key evaluation: Good, Fair, Poor, Abstain.
- ◆ Utilize multi-level error correction and data encryption technique to ensure information security.
- ◆ Customized voting options and voting methods, support customized language mode or display screen.

Central Control Unit

TC-Z4



Basic functions

- Based on functions of Central Control Unit TL-Z4, Central Control Unit TC-Z4 has functions below:
 - ◆ Language interpretation: 1+5 channels.
 - ◆ Acoustic frequency response can up to 20Hz~20KHz.
 - ◆ With interpreter unit and language distribution port, it can connect Gonsin IR simultaneous interpretation system or FS-FHSS wireless simultaneous interpretation system for compatible use.

Central Control Unit

TC-ZB4



Basic functions

- Extended functions under PC and software control
 - ◆ Voting: Yes, No, Abstain . Vote counting and result display are enabled automatically by PC
 - Single-choice and multiple-choice voting
 - First key-press and final key-press voting
 - ◆ Election: elect one or more out of N candidates, with 'competitive election', 'equal number election' and 'quick election'
 - ◆ 4-key evaluation: Good, Fair, Poor, Abstain.
 - ◆ Utilize multi-level error correction and data encryption technique to ensure information security.
 - ◆ Customized voting options and voting methods, support customized language mode or display screen
 - ◆ Language interpretation: 1+5 channels.
 - ◆ Acoustic frequency response can up to 20Hz~20KHz.
 - ◆ With interpreter unit and language distribution port, it can connect Gonsin IR simultaneous interpretation system or FS-FHSS wireless simultaneous interpretation system for compatible use.

◆ Technical Parameters

Max System Capacity	4096
Standard Capacity	60~70(different from various models)
Acoustic Frequency Response	20Hz~20KHz
SNR	>96dBA
Channel Isolation	>85dB
Dynamic Range	>94dB
THD	<0.05%
Power	AC100~240V 50/60Hz
Audio Port	1 balanced (XLR) 2 unbalanced (RCA)
Max Audio Output	LINE OUT : +20 dBu unbalanced BLANCE OUT : +20 dBu balanced
Output Impedance	>1KΩ
External Audio Input	0.775V (PHOENIX terminal)
Central Control Method	RS-232
PC Connection Method	TCP/IP
Camera Control Method	RS-485
Max Power Consumption	300W
Terminal Connection Port	8-pin×4 13-pin×4 (for TC-Z4,TC-ZB4 only)
Channel selection	6 (for TC-Z4,TC-ZB4 only)
Display Screen	OLED (61mm×37mm)
Audio recording port	USB (USB FAT32)
Audio recording File Size	0.8M/m
Active Delegate	1/2/3/4 (not including chairman unit)
VOX sensitivity	H/M/L (76dB/80dB/82dB)
Support Camera Number	4 SD cameras (built-in SD matrix), MAX 8 cameras with extended matrix
Video Input Port	RCA×4 (1Vp-p 75Ω)
Video Output Port	RCA×2 (1Vp-p 75Ω)
Camera Tracking Protocol	PELCO-P/PELCO-D/VISCA
Operating Temperature	-0~45°C
Storage Temperature	-20~50°C
Dimensions (L*W*H)	485mm×350mm×90mm
Installation	Desktop or 19" rack mounting
Weight	7.6Kg



Extension Unit ZJ-KR



Basic functions

- ◆ Confirm to IEC 60914 international standard.
- ◆ With full digital audio technology, built-in high-speed CPU and high-performance DSP digital audio processor.
- ◆ Black tempered glass panel design, simple and high-end design. All the function divisions are clearly layout and easy to operate.
- ◆ Three routes 8-pin ports to connect conferenc units, another two route 8-pin port for system cascading.
- ◆ Three routes 13-pin ports to connect conferenc units, another two route 13-pin port for system cascading.
- ◆ Automatic restoration function: support hot plug and play.
- ◆ One central control unit is able to accommodate 60-70 units. By cascading extension units, the system can support upto 4096 conference units.
- ◆ Universal voltage power switch for wider usable range and sufficient power supply.

Technical Specifications

Max System Capacity	4096
Standard Capacity	60~70(different from various models)
Power	AC100~240V, 50/60Hz
MAX Power	300W
Terminal Connection Port	8-pin ×5, 13-pin×5
Operating Temperature	0~45°C
Storage Temperature	-20~50°C
Dimensions (L*W*H)	485mm×350mm×90mm
Installation	Desktop or 19" rack mounting
Weight	7.6Kg

◆ GONSIN Digital Conference Management System V7.1.0

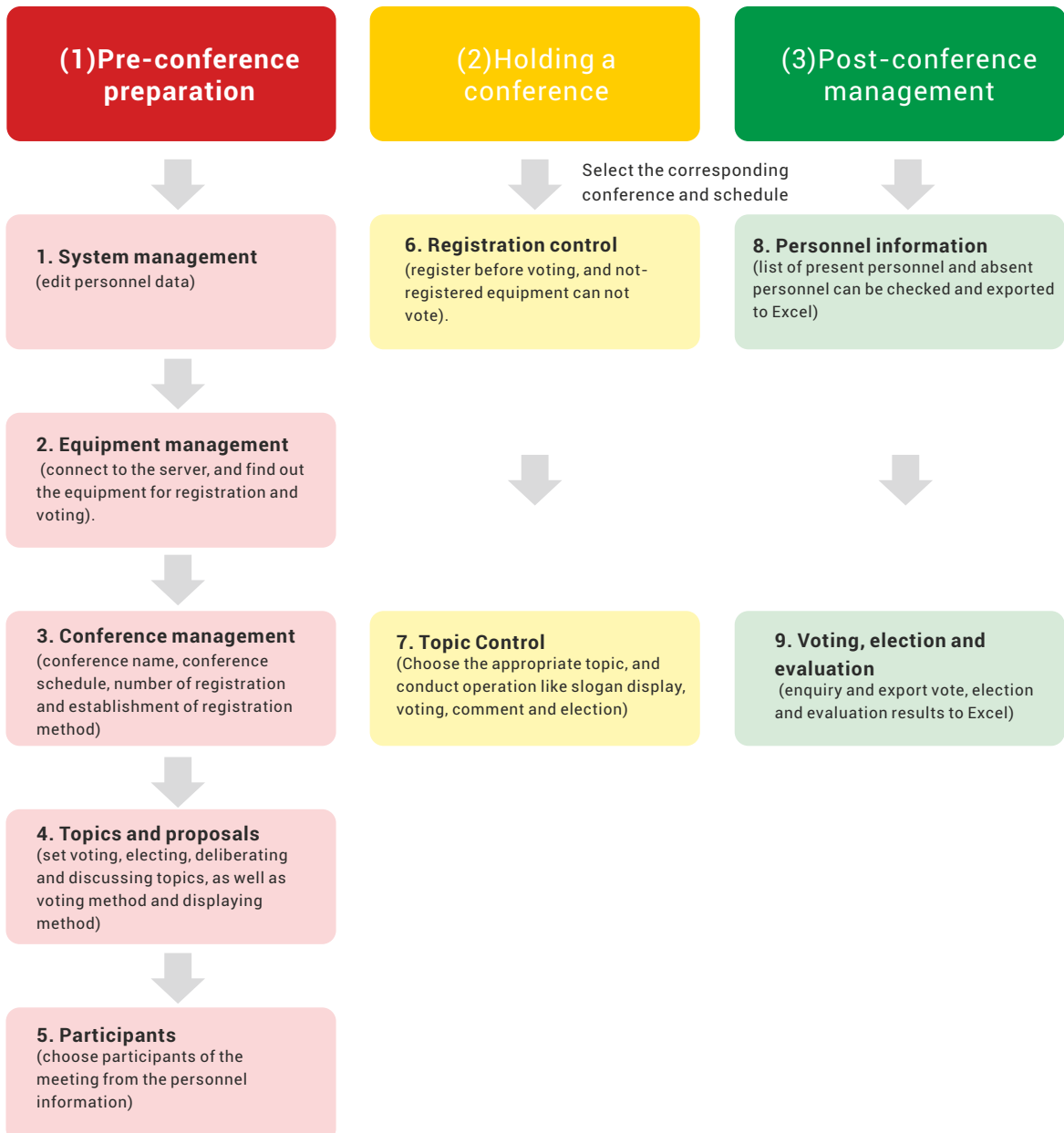
◆ Basic functions

- ◆ It supports main screen and split screen display; the software interface can be synchronized to the large screen; supports screen resolution adaptation.
- ◆ It has abundant functions, and realizes different software module functions when connected to different matching products; software module customization is available.
- ◆ It is compatible with GONSIN's other equipment, so that data is interconnected between wired products/wireless products/multiple product formats/multiple systems
- ◆ It has Super Dog Data Encryption; LicenseOnChip technology ensures that the license can not be tampered; it support AES algorithm encryption. Using ECC key exchange technology to ensure conference data transmission under encryption protection
- ◆ It has serial number authorization function; when super dog encryption is not used, you can use the software by getting the officially granted authorization code.
- ◆ Log in through the user's account and password; level-oriented management, prohibiting external personnel tampering or leaking conference information. Support different user type settings, including operating users, managing users, backup users, etc.
- ◆ Different languages are available, including Chinese, English and Russian. With language customization function, visual language editing interface, easy for translators to edit and proofread; supports language packet import / export.
- ◆ It has equipment management function, and supports online monitoring of system servers and conference equipment. Support centralized management of equipment, realizing equipment power detection, operation status detection , unified shutdown and other operations
- ◆ It supports personnel data input, including name, photo, position, unit number, seat number, custom type and so on. It supports two modes: online creation and offline creation.
- ◆ It supports auto camera tracking settings; you can choose from a variety of camera/matrix types and switch to corresponding control protocol. Preset bit information can be imported and exported, easy to save and invoke.
- ◆ It supports to create new venues or to open existing venues, and set up the venue background map and arrange seats. The seat setting is suitable for all meetings, and can be invoked through the conference schedule.
- ◆ It supports writing card devices for IC card reading and writing. The card writing device is suitable for all meetings.
- ◆ It supports to create conference name and schedule, and a variety of check-in modes are available, including the key-press registration, card registration, and no card registration.
- ◆ You can set conference topics and related content, including slogans, votes, discussions, manuscripts (support office document insertion) and so on.
- ◆ It supports voting, evaluation, election, grading, and fast election; voting options can be customized, and supports the setting of named voting, secret voting, and weight voting; working with paperless system, it will has the multi-topic batch voting function
- ◆ Support screen customization; you can set text font, color, picture and data association in the visual editing interface. Support for fast switching of multiple interface styles
- ◆ Initiate a conference through the software, supporting personnel registration, slogan display, text display, enter the discussion, start voting and other operations
- ◆ The software supports conference microphone control. It can set speech mode, application, number of speakers, speech time, seat display mode and large screen display mode in real time.
- ◆ The software supports post-conference information processing, and the list of conference personnel, the results of topics and proposals, and documents produced during the conference can be exported and printed. It supports uploading historical data from the cloud (only for some supporting products).
- ◆ Support for the tailor-made software development; interface protocol can be opened to achieve customized development according to needs of the project.

◆ Technical Parameter

Operation system	WIN7/WIN8/WIN10 operation system 32/64 bit
Video card	Independent graphics card supports VGA\HDMI\DVI interface, supporting display and split screen.
CPU	i5 or above
Hard disk capacity	500GB or above
memory capacity	4GB or above
PC interface	1 way RS-232 interface; 2 way RJ45 interface
Resolution ratio	adaptive
Video tracking protocol	PELCO-P/PELCO-D/VISCA
PC communication method	Ethernet/RS-232

◆ Function Introduction





◆ Function Introduction

According to the conference process, it has three main modules: 【Pre-conference settings】 , 【Holding a conference】 and 【Post-conference management】 . The interface is concise and convenient to operate.

■ Pre-conference preparation

Input pre-conference information, including: equipment management, personnel information, camera settings, seating settings, card writing equipment, language settings, conference information, topics and proposals, participants, screen customization, etc.

■ Hold a conference

Support sub-screen display and system control during the conference, including: registration management, topics management, discussion control, etc.

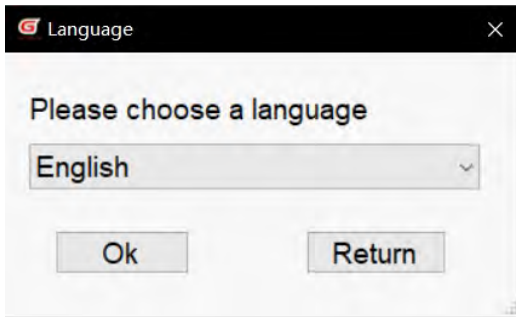
■ Post-conference management

Support information processing after the conference, including: personnel information (list statistics, personnel check, number printing, report printing, etc.), voting results (voting, evaluation, election, grading results check and printing).

- Compatible with other equipments of GONSIN system, capable for working with multiple equipment of varied models. Based on network design, it is suitable for use on WIN7/WIN8/WIN10 operating system.

- Use AES algorithm encryption and ECC key exchange technology, ensuring conference data transmission under encryption protection.

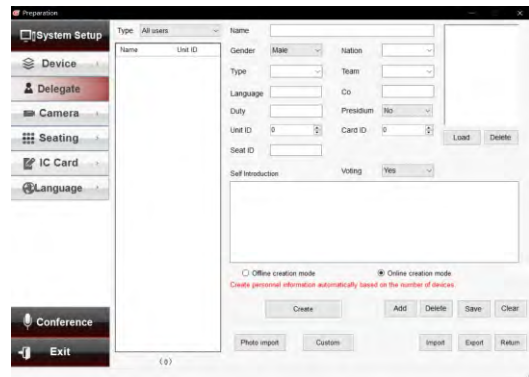
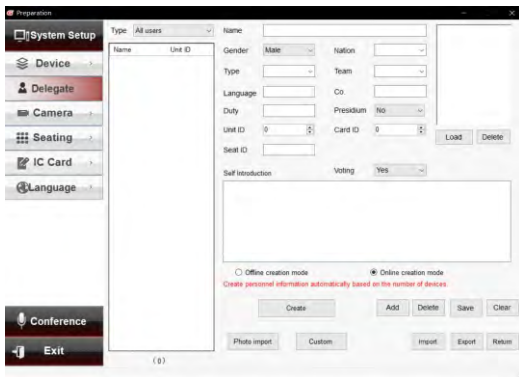
System settings



Support multiple languages:

You can choose from Chinese, English and Russian. Through language customization function, you can customize other language interface; it supports for language packet import / export

Pre-conference preparation

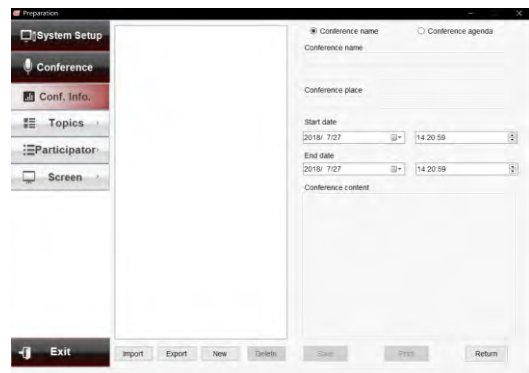


Personnel information:

Input information of participants, including name, photo, position, unit number, seat number, custom type, etc. Support online and offline creation

Camera settings:

Set up auto camera tracking of the conference equipment.

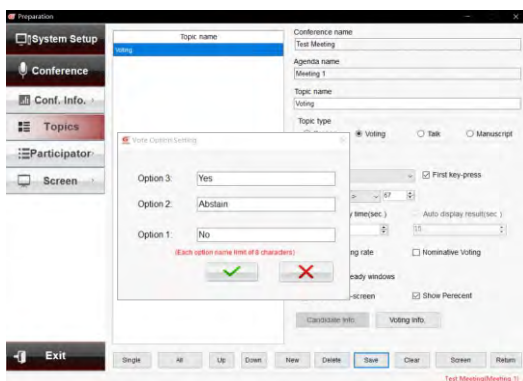


Seat setting:

The layout of the equipment is arranged according to the on-site seats, and you can monitor the process of the conference directly.

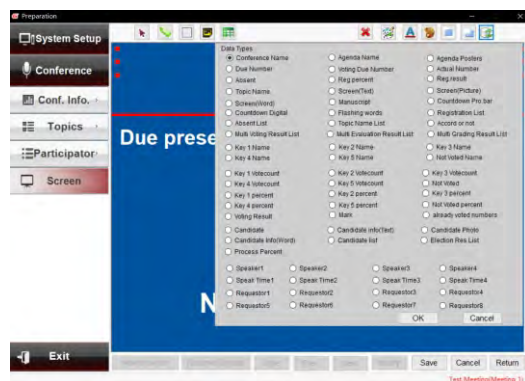
Conference information:

Create or edit conference names and schedules



Topics and proposals:

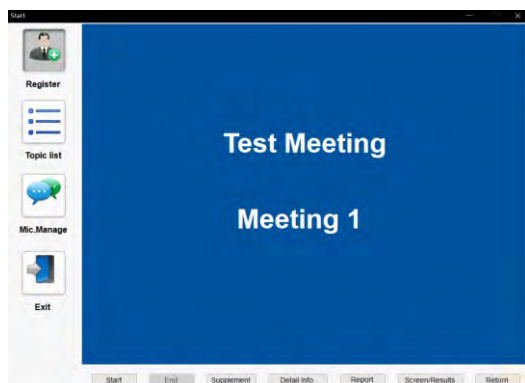
Create or edit topics and proposals. Topics items can be customized. Including slogans, voting, discussion, manuscripts and other settings, more flexible use.



Customizable Screen:

Users can set the relevant contents of the screen display, You can set text font, color, picture and data association in the visual editing interface. Support for fast switching of multiple interface.

Hold a conference



Registration:

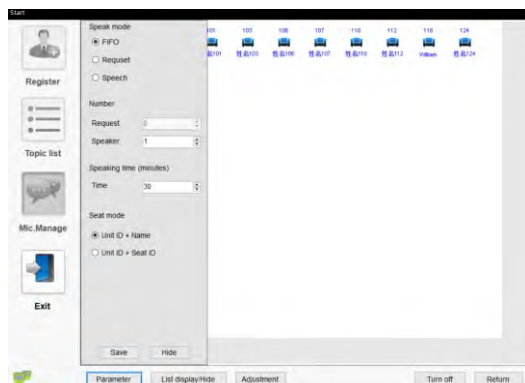
Carry out conference registration function, and support key-press registration, card registration and other registration methods

* some devices do not support card registration



Vote:

The function of meeting voting can be realized by means of voting, deliberation, election, grading, quick election, and custom voting items.



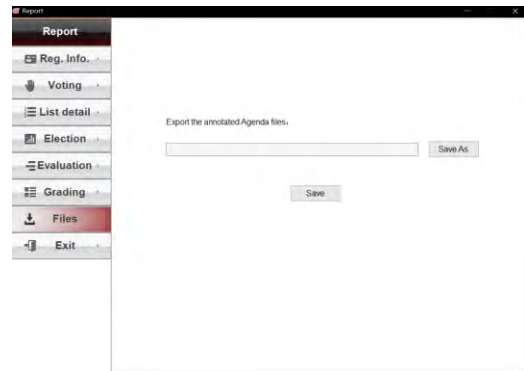
Discussion:

Speaking parameters can be set in real time, such as speaking mode, application, number of speakers, speaking time, seat display mode and large screen display mode.

Post-conference Management

Name	Gender	Unit ID	Card ID	Seat ID	Type	Company	Delegation
姓 8103	Male	29	0	29	0		
姓 8100	Male	100	0	100	0		
姓 8101	Male	101	0	101	0		
姓 8102	Male	102	0	102	0		
姓 8105	Male	105	0	105	0		
姓 8107	Male	107	0	107	0		
姓 8110	Male	110	0	110	0		
姓 8112	Male	112	0	112	0		
姓 8118	Male	118	0	118	0		
姓 8124	Male	124	0	124	0		
姓 8125	Male	125	0	125	0		
姓 8142	Male	142	0	142	0		

After the meeting, you can search and print the results of the conference registration, vote, election, appraisal and grading.



It supports post-conference information processing, and you can export and print the list of participants, the results of the topics and proposals, and the documents produced during the meeting. It supports uploading historical data from the cloud (only for some supporting products).



◆ Interpreter Console

TC-F06/16



Interpreter Console is one of the essential parts of simultaneous interpretation system. Connecting with the Interpretation Transmitter/ Discussion Transmitter, all the audio interpretation would be transferred by Interpreter Console and then further processed and transported by the system. That is how participants receiving the speeches of related language through receiver unit/discussion unit. Interpreter Console TC-F06/16 is a digitally-controlled workstation designed for 6 or 16-channel interpretation system.

◆ Basic Functions

- ◆ Personal volume adjustment and automatic feedback eliminator function
- ◆ Three pre-select incoming channels , quick switch by A/B/C key
- ◆ Same channel interlocking function to ensure the channel is related to the correct language
- ◆ Support up to 6/16 channels(including floor channel) simultaneous interpretation
- ◆ Three output volume levels, user can adjust by volume switch
- ◆ Support direct interpretation and relay interpretation
- ◆ Support relay interpretation, the interpreter can listen to others' interpretation when he or she can not understand the speaker language
- ◆ LCD screen to display various information such as input/output channel, occupied or unoccupied channel

- ◆ Channel selection function to select the input channel
- ◆ FLOOR/RELAY input channel indicator
- ◆ Interpretation timing function, timing unit: hour/minute
- ◆ Electret cardioid pickup pattern microphone with indicator ring, detachable mic stem for convenient maintenance
- ◆ Built-in 8Ω/2W loudspeaker with volume switch. When the mic is off, it plays the floor audio.
- ◆ MUTE key to enable a brief muting of the microphone for cough cut
- ◆ Speaking Speed remind function, the interpreter can press the "slow" key to remind the speaker to slow down the speaking speed
- ◆ Earphone input jack(3.5mm), to connect the headphone, headphone volume is adjustable
- ◆ Mic input jack(3.5mm), to connect the mic, which allow two interpreters to use the same interpreter console in turns
- ◆ Recording output jack (3.5mm) to connect the recording device
- ◆ Headset mic selection function, the user can select the right/left headset mic to interpret by key-press. By default, the stem microphone is used.
- ◆ Multiple interpreter consoles can be connected in a daisy chain by 25p parallel port(one male, one female)
- ◆ Automatic channel interlocking function
- ◆ Pluggable microphone stem
- ◆ With recording output interface

◆ Technical Specifications

Channel	6/16
Power Supply	24V (power up by Transmitter)
LCD Display	Dimensions: 65mm×32mm
	128×64 dot-matrix display Blue backlit, white letter
Frequency Range	30HZ~20KHZ
Pick-up Distance	10-30CM
Built-in Loudspeakers	8Ω/2W
Headphone Jack	3.5mm jack
MIC Stem Length	410mm standard
Audio input/.output	MIC×2 REC×2 Headphone×2
Dimensions: (L*W*H)	247mm×145mm×95mm
Weight	1.2Kg(net weight)
Operating Temperature	0~45°C
Storage Temperature	-20~50°C



◆ Accessories

◆ Monaural Headphone TC-D1

Color	Black ring with embedding metal
Type	Monaural mono headphone
Interface	3.5mm
Impedance	40Ω±10%
Frequency reponse range	7 Hz - 24KHz
Voltage	0.4V
Input power	8-50mW
Distortion rate	<5%
Sensitivity	L102dB±3dB



◆ Stereo Headphone TC-D3

Color	Black
Type	Stereo headphone
Interface	3.5mm
Impedance	32Ω±15%
Frequency reponse range	20-20KHz
Voltage	0.8V
Input power	30-50mW
Distortion rate	<5%



◆ Interpreter Headset TC-D4

Product Weight		Headset Specifications	
Product Weight	180g	Trumpet	Diameter 40mm
Microphone Specifications		Impedance	32Ω
MIC	Diameter 6.5mm	Sensitivity	105±3dB
Impedance	2200Ω	Rated power	≥100mW
Sensitivity	-58dB±3dB	Frequency response	15Hz-30KHz
Directionality	Directivity	Wire length	2.2M
S/N ratio	Above 60dB	Volume adjustment	Gear tuning
Frequency range	20Hz-20kHz	Port	Dual 3.5mm ports
Operating voltage	4.5V		



◆ IC Card Encoder SRD-U100

Support read out and write down information, reset password

Speed	<0.2s
Interface	USB
Installation	Flush-mounting



◆ **IC Card BL7442**

Each card has a unique 32-bit serial number and independent password and access control. Users can set different password with software, one card for appointed conference. Data can be preserved up to 10 years and a card can be rewritten up to 100 thousand times with unlimited reading times.

Dimensions	85.6x53.98x0.8 (LxWxD)
Operating temperature	-20°C to 50°C



◆ **Extension Cable 13PS-03/05/10/15/20**

Color	Black
Type	13PS
Connectors	One male, one female
Length	3/5/10/15/20m
Note: Choose in according to the conference demand	



◆ **Connection Cable 13P-T3**

Color	Black
Type	13PS
Connectors	Two male, one female
Length	1.5+1.2m
Note: For each discussion unit	



◆ **Extension Cable 8PS-03/05/10/15/20/40**

Color	Black
Type	8PS
Connectors	One male, one female
Length	3/5/10/15/20/40m
Note: Select in according to the conference demand	



◆ **Connection Cable 8P-T3**

Color	Black
Type	8PS
Connectors	Two male, one female
Length	1.5+1.2m
Note: one piece for one discussion unit	

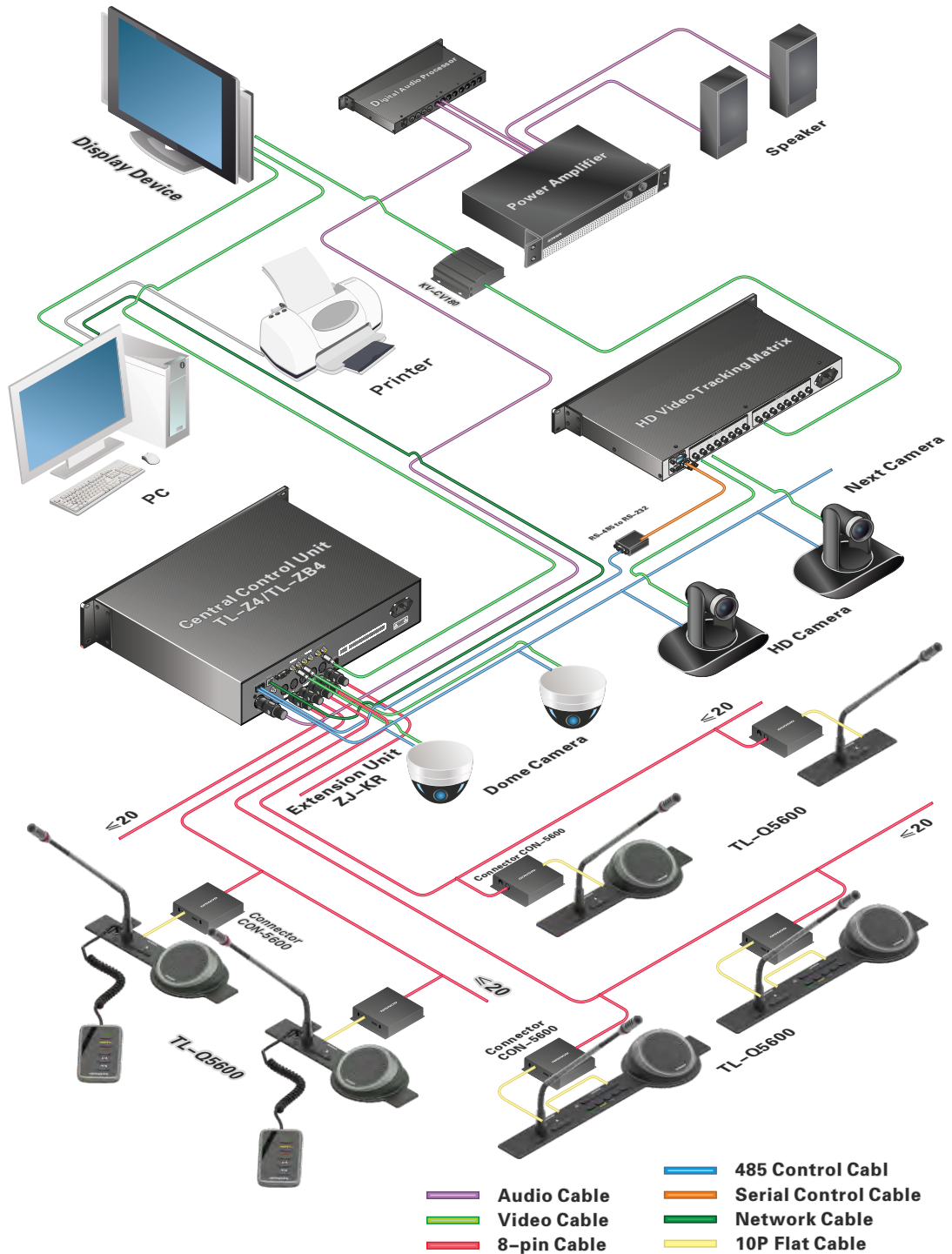


◆ **Interpreter Cable 25P-3/5/10**

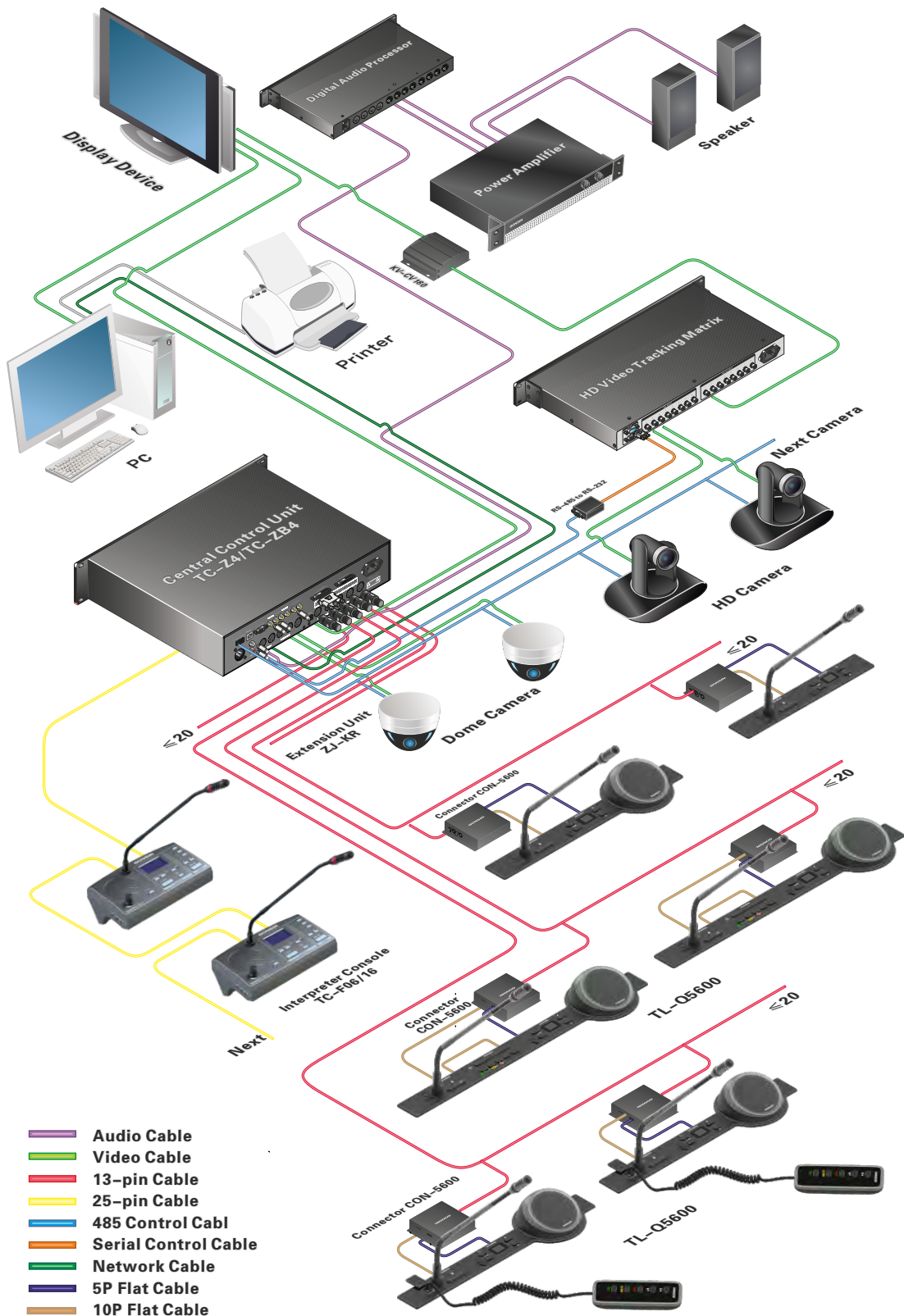
Type	25P one male, one female
Length	3m/5m/10m
Interface	DB25
Note: One 3m and one 10m for one interpreter console	



◆ System Configuration



● System connection diagram for discussion / voting



● System connection diagram for discussion / voting / interpretation

◆ System Components

◆ TL-VQ5600+BJ-Q5600/BJ-K5600 Discussion system with voting

DESCRIPTION	MODEL	QTY/PCS	Remark
Central Control Unit	TL-ZB4	1	
Chairman Discussion Unit	TL-VXQ5600	1	
Delegate Discussion Unit	TL-VDQ5600	N	
Flush Voting Unit	BJ-Q5600	N	one in two
Handheld Voting Keypad	BJ-K5600	N	
Connector (conjunction box)	CON-5600	N	
Conference Management Software	V7.1.0	1	
Extension Unit	ZJ-KR	N	Optional
IC Card	BL7442	N	Optional
IC Card Encoder	SRD-U100	1	Optional

◆ TL-VQ5600+TC-Q5600 Discussion system with interpretation

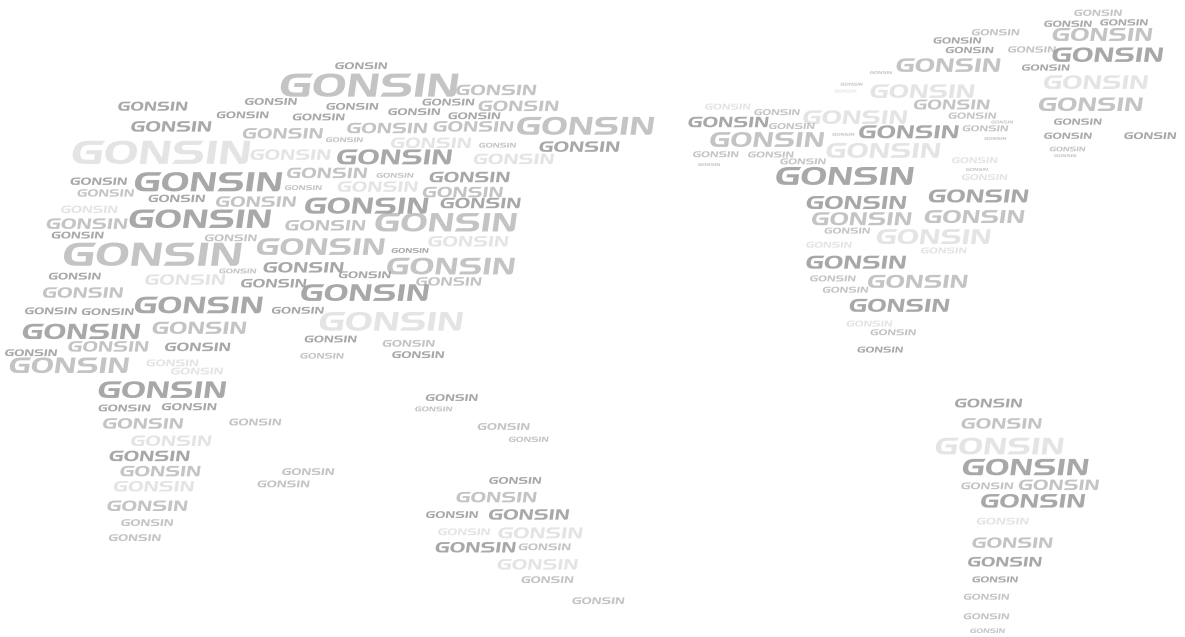
DESCRIPTION	MODEL	QTY/PCS	Remark
Central Control Unit	TC-ZB4	1	
Chairman Discussion Unit	TL-VXQ5600	1	
Delegate Discussion Unit	TL-VDQ5600	N	
Channel Selection Unit, with volume control	TC-Q5600	N	
Loudspeaker	SPK-10	N	Optional
Connector (conjunction box)	CON-5600	N	
Extension Unit	ZJ-KR	N	Optional
Conference Management Software	V7.1.0	1	Optional
Interpreter Console with gooseneck microphone	TC-F06	N	
Interpreter Headset	TC-D4	N	
Stereo Headphone	TC-D3	N	Optional
Monaural Headphone	TC-D1	N	Optional

◆ TL-VQ5600+TC-Q5600+BJ-Q5600/BJ-K5600 Discussion system with interpretation and voting

DESCRIPTION	MODEL	QTY/PCS	Remark
Central Control Unit	TC-ZB4	1	
Chairman Discussion Unit	TL-VXQ5600	1	
Delegate Discussion Unit	TL-VDQ5600	N	
Flush Voting Unit	BJ-Q5600	N	one in two
Handheld Voting Keypad	BJ-K5600	N	
Channel Selection Unit, with volume control	TC-Q5600	N	
Loudspeaker	SPK-10	N	Optional
Connector (conjunction box)	CON-5600	N	
Conference Management Software	V7.1.0	1	
Extension Unit	ZJ-KR	N	Optional
IC Card	BL7442	N	Optional
IC Card Encoder	SRD-U100	1	Optional
Interpreter Console with gooseneck microphone	TC-F06	N	
Interpreter Headset	TC-D4	N	
Stereo Headphone	TC-D3	N	Optional
Monaural Headphone	TC-D1	N	Optional

◆ TL-VQ5600 Discussion system

DESCRIPTION	MODEL	QTY/PCS	Remark
Central Control Unit	TL-Z4	1	
Chairman Discussion Unit	TL-VXQ5600	1	
Delegate Discussion Unit	TL-VDQ5600	N	
Connector (conjunction box)	CON-5600	N	
Extension Unit	ZJ-KR	N	Optional



GONSIN CONFERENCE EQUIPMENT CO.,LTD.
www.gonsin.com



English Wechat



All rights reserved. The information and specifications included are subject to change without prior notice.