



# Smart Photovoltaic Electronic Nameplate

## Smart Photovoltaic Electronic Nameplate GX-ENP108C



### Function

- Adopt new technology, fashionable appearance, exquisite high-grade, strong sense of science and technology, suitable for various scenes
- Adopt intelligent photovoltaic technology, lithium polymer battery energy storage, the configured photovoltaic panels can continue to collect energy and charge under indoor lights, adjust the working mode according to the light condition, automatically switch the sleep mode of light and dark, implement intelligent power management, extremely low carbon, energy saving and environmental protection
- Adopt 10.85-inch electronic ink screen, close to the paper display effect, the display screen is soft and natural, no flicker, does not affect the shooting effect, the screen surface adopts anti-glare treatment, reduce light pollution
- Bluetooth 5.0 BLE transmission technology, low power consumption, strong anti-interference; With photovoltaic cells and lithium polymer battery energy storage power supply, 300Lux light every day for 10 hours, can achieve permanent standby; Supports emergency charging via USB type-C port
- Support black, white, red three colors display, with high contrast
- Front and rear dual screen design, dual screen can synchronously display participants' information, support Logo, background picture, background color, unit, name, position and other information dual-screen synchronous display
- Achieve zero management, zero loss, durable, convenient deployment, easy maintenance
- Unified management of electronic nameplate after access to the intelligent conference management platform. The content can be automatically updated according to the meeting schedule, and the corresponding information is displayed for different meetings
- Through the network base station connected to the electronic nameplate can achieve: Through the network base station connection, the upper computer software and the intelligent conference management platform can display, edit, manage and transmit data to a single or multiple electronic nameplates, and quickly complete batch updates, so that the electronic nameplate can meet the display needs in a variety of application environments
- Through NFC, Bluetooth directly connected electronic nameplate can achieve: Android, iOS, Harmony tablet terminal and mobile terminal can display, edit, manage and transmit data to one or more electronic nameplates. Nameplate images can be displayed continuously after the screen is refreshed, and conference templates can be delivered with one click

## Technical Parameters

Display	10.85-inch Dual E-ink Screens
Resolution	1360×480
DPI	133
Viewing area	259.76×91.68mm
Display color	black, white, red
Viewing Angle	up and down > 178°
Battery life	about 300Lux light per day for 10 hours, permanent standby
Communication method	Bluetooth BLE 5.0, NFC ISO/IEC14443-A
Communication distance (no obstruction and no interference)	NFC update: within 10cm communication distance between mobile phone and nameplate
	Bluetooth update: within 15 meters of the communication distance between the mobile phone and nameplate
	Bluetooth base station update: within 15 meters of the communication distance between network base station and nameplate
Appearance color	Silver
Working current	brush current 50mA, standby current 0.2mA
Built-in battery	230mAH
Power supply	photovoltaic panel charging, lithium polymer battery energy storage, USB type-C
Wireless band	BLE 5.0/ Bluetooth, 2.402~2.480GHz
Network base station update mode	Connect the network base station to update the content through the upper computer software and intelligent conference management platform
Bluetooth update method	Through the Bluetooth of the mobile phone, use the APP to directly connect the nameplate to update the content
NFC update method	The NFC of the mobile phone is close to the center of the nameplate, and the APP is directly connected to the nameplate for content update
Supported platform	When using network base station: Support WINDOWS 7/10 operating system, linux
	When using Bluetooth on mobile phone: Support Android support terminal (Android 7.0 or above), iOS (9.0 or above), Harmony
Installation mode	Desktop
Product size	284×87×130mm
Packing size	420×320×230mm
Net weight	780±5g
Operating temperature	0~40°C
Storage temperature	-20~50°C

# Network Base Station GX-AP102-Y



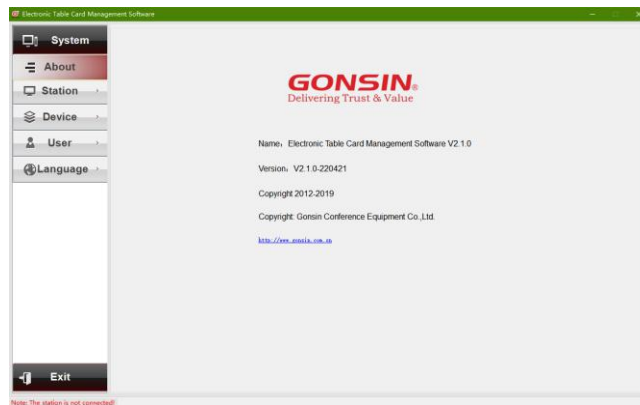
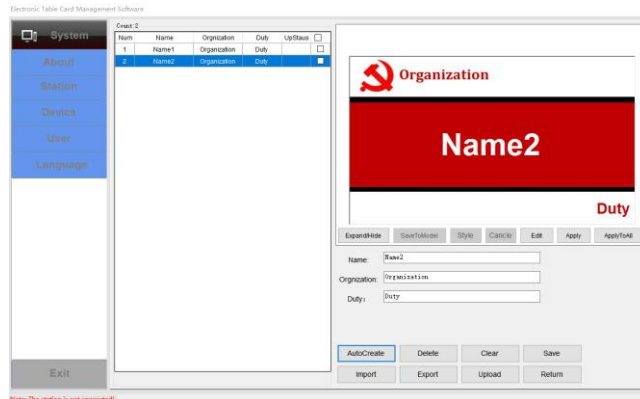
## Function

- ◆ Connected through the network base station, support through the host computer software, intelligent conference management platform connected to the network base station for editing and management, 57 seconds to complete the batch update
- ◆ Normal communication radius between nameplate and network base station is  $\leq 15$  meters to meet various occasions.
- ◆ External small suction cup antenna design, comes with 2 meters of connecting cable, the server can be hidden
- ◆ High-performance processing capabilities, using 32-bit 4-core Cortex-A17 processor, the highest main frequency 1.8G, equipped with Android 7.1 system.
- ◆ With dual-screen heterodyne function, support HDMI 4K@60fps, EDP 4K×2K@30fps, LVDS 1920×1080@30fps.
- ◆ With a wealth of external interfaces, 6 USB interfaces, 1 TP interface, 1 SPI interface, 1 I2C interface, 2 groups of TTL serial port is perfectly compatible with the customer's expansion needs.
- ◆ Equipped with multiple function keys and status lights, reset button, power button and multi-function keys (customizable) to control the device, 3 status lights can monitor the current status of the base station.
- ◆ Support 4G communication function.
- ◆ Support battery backup to maintain emergency response in case of sudden power failure.

## Technical Parameters

CPU	Quad-core Cortex-A17 up to 1.8GHz
GPU	Mali-T764, supports OpenVG1.1, OpenGL ES1.1/2.0/3.0, OpenCL1.1, RenderScript and DirectX11.OpenCL1.1, RenderScript and DirectX11.
Operating System	Android 7.1
RAM	DDR3×4, 2GB
ROM	EMMC 8/16GB, supports TF card expansion.
WIFI	802.11b/g/n
BT	Bluetooth V4.0
Display	1×Dual/Single LVDS 1920×1080@30fps/1280×800@30fps
TP	Support USB interface TP
USB	2×USB TYPE A (one of them supports OTG2.0)
Serial Port	1×RS485 interface
Other Expansion Interfaces	2×Magnetic lock interface + door detection
HDMI	1×HDMI1.4/2.0 4K×2K@60fps
Ethernet	4×10/100M RJ45 + 4×DC12V can be connected to 4-way IPC
Microphone	1×MIC
Speaker	Built-in, 8Ω/6W
Power Input	Standard 12V , 5A
Product Size	135.6×135×55mm
Operating Temperature	-20 ~ +70℃
Storage Temperature	-20 ~ +85℃
Operating Humidity	15% ~ 60%RH
Storage Humidity	15% ~ 60%RH

# Electronic Nameplate Management Software V1.0



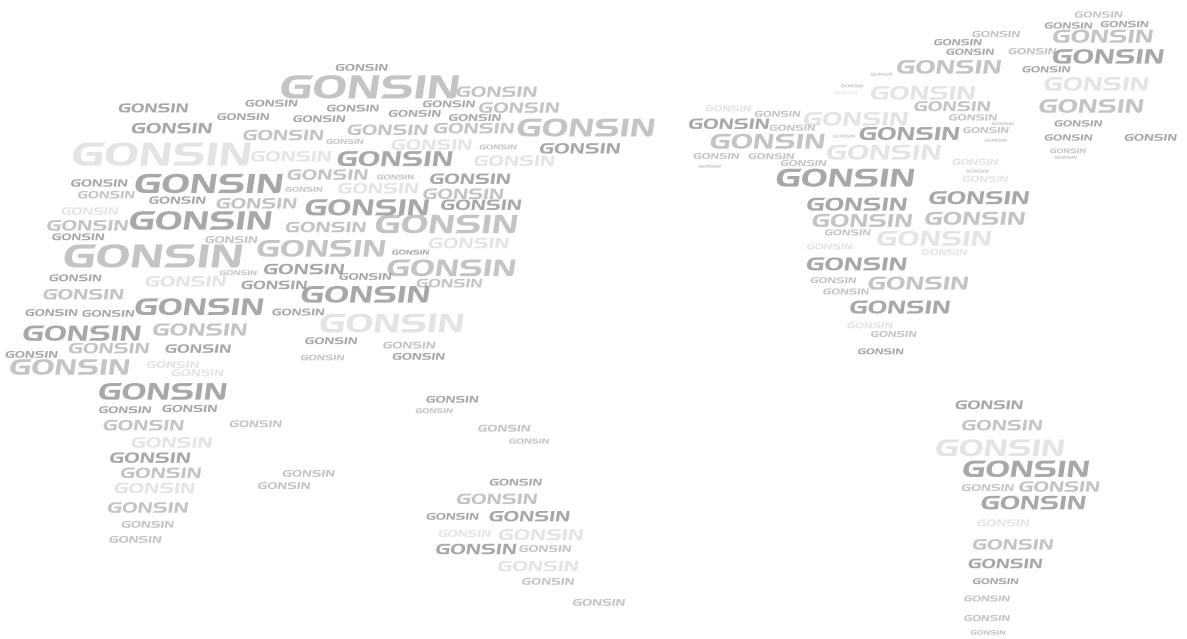
## Function

- ◆ Support one key to add, delete, clear and save electronic nameplate information
- ◆ Support ID number and modification
- ◆ Support display interface template customization and image import
- ◆ Support the editing of display content (company / name / position) and file import and export
- ◆ Support the application of single or multiple electronic nameplate templates and file upload
- ◆ Support base station selection and management
- ◆ Support Chinese and English language selection

# GONSIN Electronic Nameplate Embedded Software V1.0

## Function

- ◆ Embedded in the electronic nameplate hardware for achieving the functions of electronic nameplate



GONSIN CONFERENCE EQUIPMENT CO.,LTD.  
[www.gonsin.com](http://www.gonsin.com)



English WeChat



B01

All rights reserved. The information and specifications included are subject to change without prior notice.