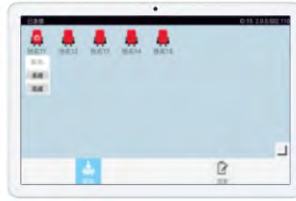




Paperless Conference System

◆ Paperless Conference Tablet Terminal

GX-PET403



GX-PET403

◆ Basic functions

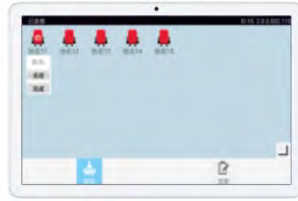
- ◆ In compliance with IEC60914 international standard
- ◆ Ergonomic design, integrated metal body, micro sand spraying with good touch, high curvature arc closing design on the side for more comfortable holding experience
- ◆ 10.1 inches, Full HD ,with 1920×1200 high resolution for high quality image display
- ◆ Caring of eyes with blue light filtering
- ◆ Dual speaker setting, high quality stereo for better restoring the sound details clearly
- ◆ Capacitive touch screen, support ten-point touch control, sensitive operation, providing a good use experience
- ◆ Terminal can display user's info, conference info, conference results and on-site seating map.
- ◆ Attendance registration function: registration is initiated and ended by paperless terminal(chairman), the results can be displayed on LCD screen.
- ◆ Voting function: started and ended by paperless terminal(chairman), the results can be display on LCD screen.
- ◆ In the voting process, multi-level error correction and encryption scrambling are carried out to ensure data security
- ◆ Customized voting function: The paperless terminal(chairman) can initiate and end the customized voting, voting results can be displayed on paperless terminal. The voting content is defined by GONSIN Intelligent Conference management software.
- ◆ Call service: participants place a call via paperless terminal. The service staff will provide the service in according to the request displayed on the paperless call service terminal. Basic functions: paper, pen, tea, towel and etc, the functions can be customized.
- ◆ Browsing conference files: before the conference, the digital files could be preset on the paperless terminal, the user could open and browse the files; it supports DOC, DOCX,PDF, PPT, PPTX, JPG, PNG, BMP, MP3, MP4,AVI, FLV, WMV and other format files. Files can be displayed in screen sharing status.
- ◆ Screen sharing and synchronizing screen function: user can initiate screen sharing, all terminals will be displayed the same content, including page scroll, paging, notes and other operation ; After exit from the sharing screen, user can synchronize the screen to the sharing one manually. The sharing content can be displayed on other display device simultaneously.
- ◆ Support internal messages function, user can communicate via sending internal messages
- ◆ Support digital whiteboard function, user can create whiteboard quickly, the content will be saved in the server
- ◆ Support surfing the internet via the browser
- ◆ External file reading function: support SD card insertion, external file reading and operation management
- ◆ System capacity: each wireless AP support 35 seats expanded terminal; system can be expand by extend wireless AP; actual achievable quantity depends on the wireless signal of conference environment
- ◆ The serial-number is one and only, the conference system supports automatically or manually assign ID to the corresponding equipment.
- ◆ The system can connect multiple chairman terminals, and any delegate terminal can be set as vice chairman terminal. There is no limit on the number of chairman terminal and vice chairman terminal

More functions of The Paperless Chairman Terminal are as below.

- ◆ Support sending mass system messages to all delegate terminals, instead of sending one by one
- ◆ Support control the conference topic, allow user to initiate the registration and voting.
- ◆ Allow user to initiate quick voting
- ◆ Support mandatory sharing screen
- ◆ Check conference information, such as voting process and result, call service information, screen sharing information and etc.

◆ Paperless Call Service Terminal

GX-PST403



GX-PST403

◆ Basic functions

- ◆ In compliance with IEC60914 international standard
- ◆ Ergonomic design, integrated metal body, micro sand spraying with good touch, high curvature arc closing design on the side for more comfortable holding experience
- ◆ 10.1 inches, Full HD ,with 1920×1200 high resolution for high quality image display
- ◆ Narrow frame design, more than 80% screen-to-body ratio, with a large screen
- ◆ Caring of eyes with blue light filtering
- ◆ Dual speaker setting, high quality stereo for better restoring the sound details clearly
- ◆ Capacitive touch screen, support ten-point touch control, sensitive operation, providing a good use experience
- ◆ Call service: participants place a call via paperless terminal. The service staff will provide the service in according to the request displayed on the paperless call service terminal. Basic functions: paper, pen, tea, towel and etc, the functions can be customized.
- ◆ Support to check on-site seat : according to the layout of the venue, the on-site seating chart can be displayed, and the service information can be displayed directly on the screen, so that the service personnel can provide services accordingly

◆ Technical Parameters

Product Model	GX-PET403/GX-PST403
Operation System	Android
CPU	Hisilicon Kirin 710A
RAM	4GB
ROM	64GB
Screen	10.1 inches,resolution 1920×1200
Screen Type	Full-view IPS capacitive touch screen ; Support ten-points touch
Connection Mode	2.4G + 5.8G Dual Band WiFi,Bluetooth
USB Interface	Type-C
Audio Interface	USB Type-C
Microphone	1
Speaker	2
Rear Camera	500W
Front Camera	200W
Battery Capacity	5100mAh
System Capacity	One wireless AP supports 35 seats; It can be expanded to 65025 seats by expanding wireless AP
Local Video Playing Time	Appr.9 hours <small>note: this is based on experiment condition, the actualplaying time counts on the practical situation</small>
Dimension(W×H×T)	240.2mm×159mm×7.55mm
Net Weight	Appr.460g(battery included)
Operating Temperature	0~35°C
Storage Temperature	-20~45°C

◆ Paperless Server

GX-DS302



◆ Basic functions

- ◆ In compliance with IEC60914 international standard.
- ◆ All the equipment are connected by cable. Flexible cabling reduces project workload, makes large scale construction easier.
- ◆ Automatic restoration function: supports hot plug.
- ◆ Stable and reliable performance, full-metal design with aluminum alloy panel, the chassis can resist contact 4KV strong magnetic interference, air gap 6Kv electromagnetic interference, AC100-240V wide voltage input
- ◆ Has stable and reliable performance, adopts aluminum alloy panel, all-metal design, chassis can resist contact 4KV strong magnetic interference, air gap 6Kv electromagnetic interference, AC100-240V wide voltage input.
- ◆ Rich interfaces: 2×1000M LAN, 6×COM, 10×USB, 8×GPIO (built-in), 1×VGA, 1×HDMI, 1×PCIEx16 slot, 1×Msata slot, 1×Mini- PCIE slot.
- ◆ Support watchdog hardware reset function.
- ◆ The congress file format supports DOC, DOCX, PDF, PPT, PPTX, XLS, XLSX, JPG, PNG, BMP, MP3, MP4, AVI, FLV, WMV and other general document format.
- ◆ To process and manage all data, command code and function setting for paperless system.
- ◆ Support paperless congress terminal management, search and detect online terminals.
- ◆ Support participant data management, which can realize two modes of offline creation and online creation
- ◆ Support seat setting, create conference room map, seat arrangement, customized editing.
- ◆ Support congress management, create congress agenda, set congress time and place.
- ◆ Support conference topic management, attendance registration, voting, grading, evaluation, election function, support multi-topic voting and other customized functions.
- ◆ Support customized user interface's color and size, background, style, data connection and others

Technical Specifications

Installation Method	4U standard rack or desktop
Material	aluminum alloy panel, SGCC galvanized steel plate, environmental protection exterior paint, fingerprint resistance
Operating System	Windows Server 2008 Trial
CPU	Intel Core i5 processor, 6M cache, quad core 4 threads, up to 3.20GHz
Memory	8G DDRIII, maximum support 16G
SATA	1 TB SATA
Display Port	1×HDMI, 1×VGA
Ethernet	2×LAN 1000M
USB Port	2×USB 3.0, 8×USB 2.0 (4 of which are built-in)
Audio Port	1×Mic_in, 1×LINE_OUT
Control Port	2×RS-232, 1×PS/2
Expansion Port	1×PCI-EX16, 1×Mini-PCIE, 4×RS-232, 4×GPO, 4×GPI4
Keyboard	Pull-out integrated keyboard and mouse
Display	Built-in 8.9LCD, 1024×600DPI, 250 cd/m ²
Touch Screen	10-point industrial capacitive touch screen
Optical Drive	ultra-thin DVD optical drive
Power Supply	AC100~240V, 50/60Hz
Power	300W
Color	Industrial Black
Dimensions (L×W×H)	482×305×195mm(without panel handle)
Weight	15kg
Operating Temperature	0~60°C
Storage Temperature	-20~70°C
Operating Humidity	0~95% relative humidity, non-condensing
Storage Humidity	0~95% relative humidity, non-condensing

◆ Paperless Terminal Charging Cart

GX-CHG16B



◆ Basic functions

- ◆ It has strong current protection functions such as lightning, surge, electrical overload, leakage, isolation, etc
- ◆ It has weak current protection functions such as over current, overvoltage, short circuit, overcharge, perfusion, intelligent temperature control, cable voltage drop compensation, etc
- ◆ Adopting intelligent temperature control and the heat dissipation design of the top straight row, effectively improving the heat dissipation effect and ensuring the stable operation of the equipment
- ◆ Use silent continuously variable transmission cooling fan to greatly reduce noise
- ◆ Can charge 16 tablet computers at the same time, grid display mode, beautiful and neat, projected status indicator, easy to see
- ◆ It has an intelligent charging management circuit and supports fast charging protocol, which can effectively protect the battery
- ◆ Indicator circuit, red light when charging and green light when fully charged

Technical Specifications

Status Indicator	Charging indicator: green when fully charged (standby); red when charging
Fast charging protocol compatible	Apple, BC1.2(DCP), HUAWEI-FCP, MTK PE, SAMSUNG-AFC
Lightning protection	National standard II class lightning protection, with impact resistance and overvoltage rating of 2.5KV
Electrical surge protection	Discharge the transient overvoltage or other transient overvoltage surges that exceed the normal working voltage to protect the connected equipment from damage
Overload protection	Automatically switch to the constant load mode when overloaded, and cut off the power when severely overloaded to protect the equipment
Leakage Protection	Fast leakage protection device, double leakage protection, prevent personal electric shock and leakage, and ensure safety
Isolation protection	Strong and weak electrical isolation design, electrical shielded installation, safe low voltage
Over current protection	Each port is independently configured with 2.5A over current protection, and the output of the faulty port will be cut off when the load is over current, without affecting the use of other ports
Overvoltage protection	When the output voltage is higher than 6.5V, the output will be cut off intelligently to protect the charging equipment from damage
Short circuit protection	Cut off the output when the output port is abnormally short-circuited to ensure safety
Overcharge protection	Built-in overcharge protection circuit, intelligently detect the power of the charging device, and automatically stop charging after charging is completed, realizing worry-free charging
Perfusion protection	Built-in reverse cut-off chip to prevent device current from backflow
Input voltage	AC 220V 50/60Hz 10A; Optional AC 100V~240V 50/60Hz 10A
Input power	200W
Output	USB2.0×16 bit, 5V/2.4A(MAX)
Main material	Sheet metal + flame retardant ABS
Charging station size	290×230×24(mm)×16 stations
Product size (L×W×H)	520×420×350(mm)
Packing size (L×W×H)	590×480×420(mm)
Net weight	18.1kg
Package weight	21kg
Working temperature	0°C~45°C
Working environment humidity	20%~80%
Storage temperature	-15°C~45°C

◆ Paperless Terminal Charging Cart

GX-CHG32/GX-CHG48/GX-CHG60



GX-CHG32/GX-CHG48



GX-CHG60

◆ Basic functions

- ◆ Multi-layer safety protection of the whole machine to ensure the safety of personnel, charging cars and tablet computers at all times
- ◆ It has strong current protection functions such as electrical surge, overload, leakage, isolation, etc.
- ◆ It has weak current protection functions such as over current, overvoltage, short circuit, overcharge, perfusion, intelligent temperature control, cable voltage drop compensation, etc.
- ◆ It can charge 32/48/60 tablet computers at the same time, grid display mode, beautiful and neat, projected status indicator, easy to see
- ◆ With intelligent charging management circuit, it can effectively protect the battery
- ◆ Indicator circuit, red light when charging and green light when fully charged
- ◆ Aluminum alloy frame, 1.0-1.2 mm cold-rolled steel plate, bearing 200 kg load
- ◆ The rounded corners of the cabinet are designed for safety protection to reduce the injury of the human body after a collision
- ◆ All materials can be recycled and reused, environmental protection and energy saving
- ◆ The height of the handle from the ground is in line with the average height of people, using medical-grade universal silent wheels
- ◆ The space size of the tablet slot is W23.5×D310×H213 mm, which is suitable for most tablet computers on the market
- ◆ Adopting suction and exhaust convection heat dissipation structure, intelligent temperature control dual exhaust silent fan, greatly reducing noise
- ◆ Adopt medical mute universal wheels to greatly reduce noise
- ◆ The front door adopts a three-point flat lock, with good security performance
- ◆ Mains socket outside the cart

Technical Specifications

Model	GX-CHG32	GX-CHG48	GX-CHG60
Status Indicator	Charging indicator: green when fully charged (standby); red when charging		
Fast charging protocol compatible	Apple HUAWEI-FCP SAMSUNG-AFC QC3.0		
Overvoltage and undervoltage protection	-	-	Overvoltage tripping 280V, undervoltage tripping 55-160V, self-reset delay 30±10s
Electrical surge protection	Discharge the transient overvoltage or other transient overvoltage surges that exceed the normal working voltage to protect the connected equipment from damage		
Overload protection	Automatically switch to the constant load mode when overloaded, and cut off the power when severely overloaded to protect the equipment		
Leakage Protection	Fast leakage protection device, double leakage protection, prevent personal electric shock and leakage, and ensure safety		
Isolation protection	Strong and weak electrical isolation design, electrical shielded installation, safe low voltage		
Over current protection	Each port is independently configured with 3A over current protection, and the output of the faulty port will be cut off when the load is over current, without affecting the use of other ports		
Overvoltage protection	When the output voltage is higher than 6.5V, the output will be cut off intelligently to protect the charging equipment from damage		
Short circuit protection	Cut off the output when the output port is abnormally short-circuited to ensure safety		
Overcharge protection	Built-in overcharge protection circuit, intelligently detect the power of the charging device, and automatically stop charging after charging is completed, realizing worry-free charging		
Perfusion protection	Built-in reverse cut-off chip to prevent device current from backflow		
Main material	Sheet metal + flame retardant ABS		
Input voltage	AC 220V 50Hz 10A Optional AC 110V 60Hz 10A		
Input power	600W	900W	900W
Output	32USB,5V/2.4A(MAX)	48USB,5V/2.4A(MAX)	60USB,5V/2.4A(MAX)
Charging station size	W23.5×D310×H213(mm)×32 stations		
Product size (L×W×H)	W559×D554×H924(mm)	W559×D554×H924(mm)	W719×D554×H924(mm)
Packing size (L×W×H)	W600×D594×H930(mm)	W600×D594×H930(mm)	W760×D594×H930(mm)
Net weight	54kg	60kg	65kg
Package weight	63kg	69kg	74kg
Working temperature	0°C~45°C		
Working environment humidity	20%~80%		
Storage temperature	-15°C~45°C		

◆ GONSIN Intelligent Conference Management Software V7.1.0



GONSIN intelligent conference management software V7.1.0 is a sort of background management software for pre-conference, conference, after-conference periods. It bases on networked and digital design, comes with conference data entry, conference management, conference data analysis and other functions. It also provides simple visual operation interface, supports customized interfaces, is easy to use.

Software can operate on the mainstream WIN7/WIN8/WIN10 operation system, easily realize intelligent and human-friendly effective conference management.

◆ System Features

■ Networked, Digital System Platform

Based on networked and digital design, it connects to conference devices in operation to realize the real-time interaction between management software and device data.

The software is based on modular design, covering a full range of products' functions. It supports customized setting and function modular in according to users' demands.

■ Equipment Management

Users can search and set conference equipment by the software to realize central management. After started up, the software will search to the server device in the network and automatically connect to the server.

■ Intelligent Participants' Data Creation

If there is discontinuous number of conference devices and make it difficult to create participants' data, users can create participants' data with one click.

■ Conference Topic Creation

It supports conference topic creation and topic voting. Users can preset conference topic, edit conference's name, data, place, content and other information, set conference discussion, conference voting and others by conference management software to satisfy the actual conference demands.



Data Management After Conference

After the end of conference, users can analyse and manage the data by the software, including data checking, data backup export. The conference content could be printed.



◆ Function Introduction

■ Language Setting

It supports language setting, after the installation, user can Select the cooresponding language. Customized language is supported.

■ Conference Preparation

Support information entry, scuh as equipment management, staff data, camera setting, seating setting, card writer, language setting, conference information, topic, attendees, customize screen and etc.

■ Hold Conference

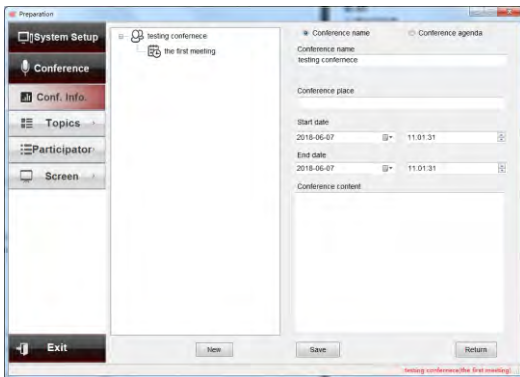
Provide multiple screen display and system control functions, such as attendance registration, topic management, discussion control and etc.

■ After Conference Process

After the end the conference, it begins the after-conference information process, the functions include: conference information saving, delegate information management, attendance registration information management(delegate list, delegate checking, print report and etc), voting results management(voting, evaluation, election, check or print grading results), and others.

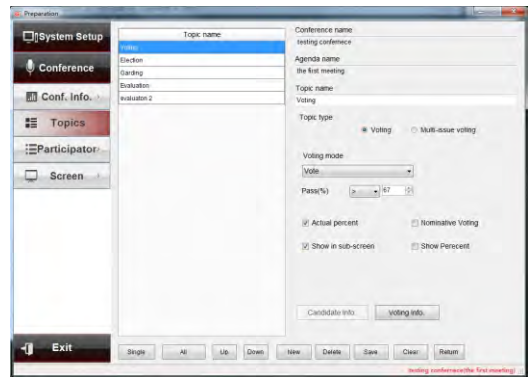
- Compatible with other devices from GONSIN, satisfy the demand for operation of various equipments.

- Network-based design, suitbale for WIN7/WIN8/WIN10 operation system



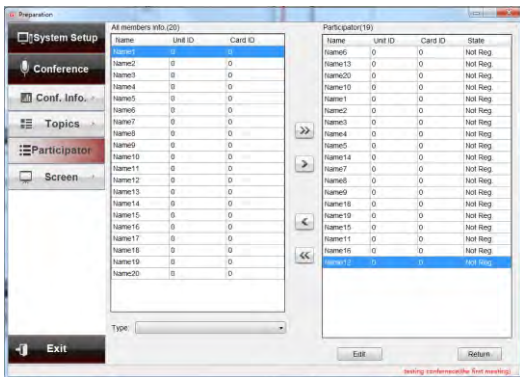
Conference Information:

user can create a new conference name and relative content, supports editing, deleting conference content.



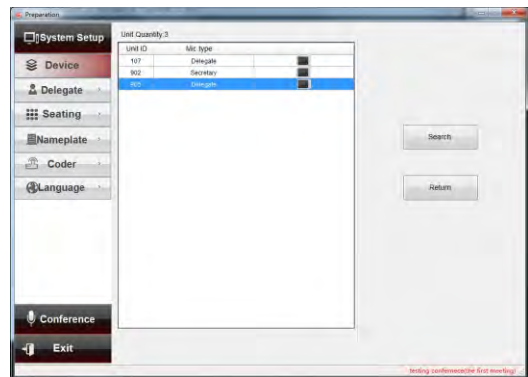
Conference Topic:

users can set the conference topic and relative contents, upload conference files in according to conference agenda.



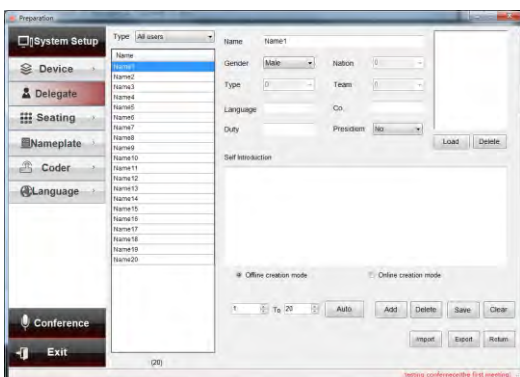
Participants:

user can select the participants from a person list.



Equipment management:

in this interface, users can search the online equipments.



Person Data:

in according to the online equipments, users can create person data, such as name, gender, position, seat number, and support adding, deleting, clearing of participants' data.



Seat Setting:

users can set the seats in according to the conference venue, make the management more convenient.

◆ Paperless Conference Terminal Software V2.0

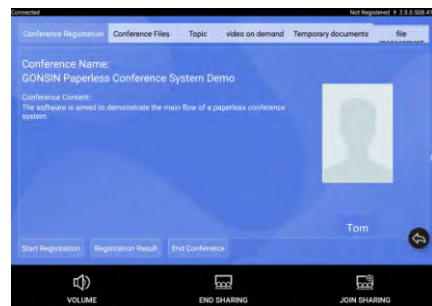
◆ Function Introduction

Paperless conference terminal software can realize digital conference file management, files interaction, checking and sharing. Paperless conference terminal support touch control function, participants can write notes, share the screen. It supports attendance registration, voting, and customized voting, call service, internal message sending and others function within the system. The paperless conference terminal software can appoint any paperless terminal as the chairman/delegate terminal, which make conference management more easier.

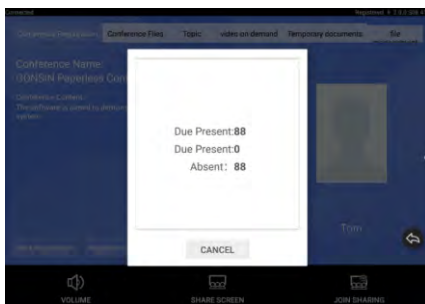
- ◆ Support interface setting for different positions.
- ◆ Support accessible paperless server
- ◆ Support automatic check for updates in each operation
- ◆ Support compatible operation with wired terminals and wireless terminals



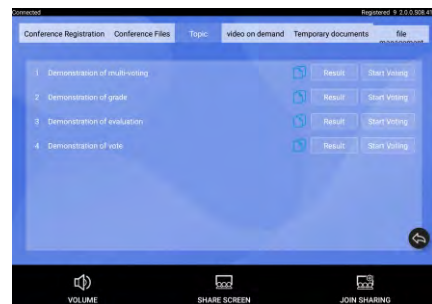
Paperless terminal (chairman) interface: display conference overview, participant's information, initiate registration, send message to all paperless terminals, end conference and etc.



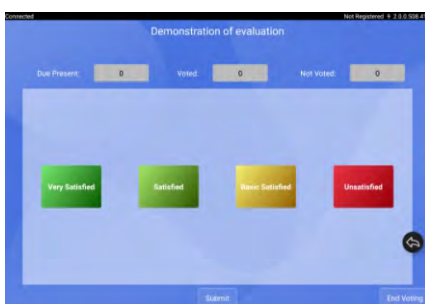
Registration interface: chairmand terminal initiate registration, all paperless terminal can conduct registration



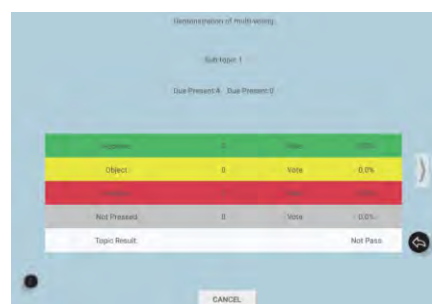
Registration result interface: After registration, all paperless terminals display the registration result



Conference topic interface: display the preset conference topic list, the chairman can initiate voting in according to the agenda, and all terminals will enter the voting interface.



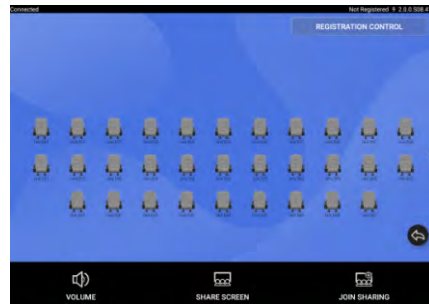
Voting interface: press the corresponding button and submit



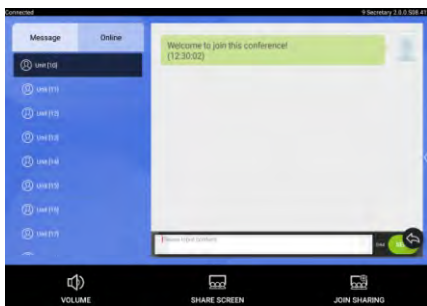
Voting result interface: when the paperless chairman terminal ends the voting, the results will be displayed on each paperless terminal.



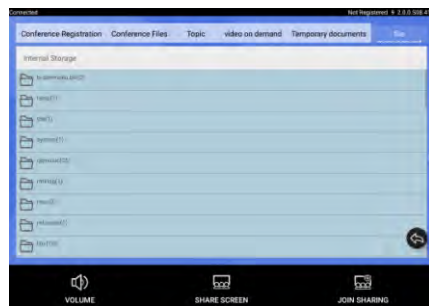
Paperless call service interface: click the corresponding button and submit, the call service terminal can receive the request, the service personnel will send what the user asks for.



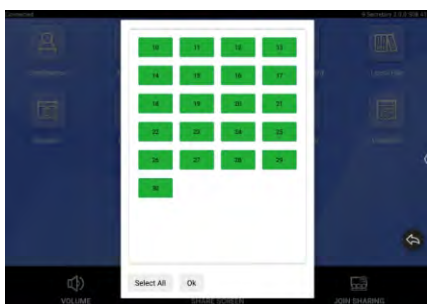
Seat management interface: the system supports the seat design of the venue, and displays the seat layout of the venue on the paperless interface, and dynamically displays the status of participants such as online, registration, microphone switch, and voting



Internal message: participants can send internal messages to communicate by this module.



Files management: support import or export files from SD card and USB flash disk, supports files operation(copy, cut, rename, delete)

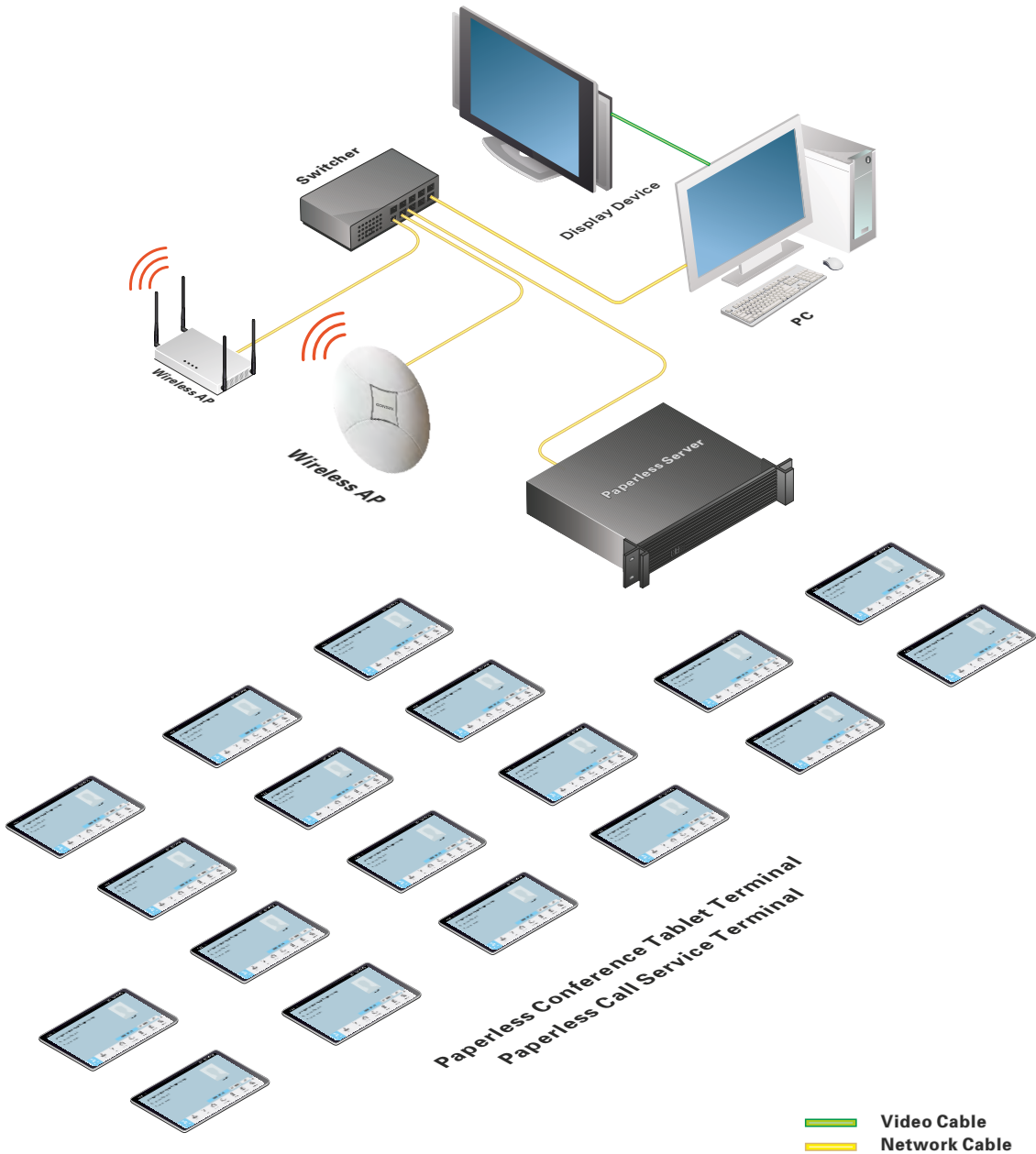


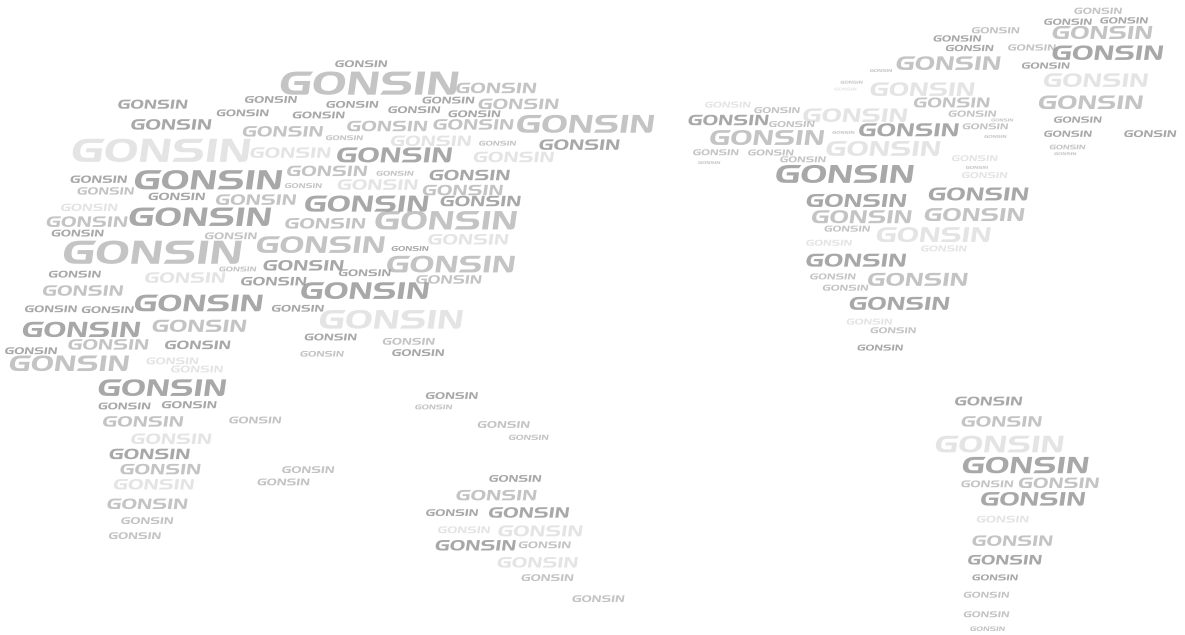
Screen sharing interface: after a user initiates the screen sharing, all paperless terminal can display the same interface simultaneously, the initiator can make notes in the terminal.



Simultaneous interpretation channel selection interface: The desktop paperless system has its own simultaneous interpretation function, and the lifting paperless system can expand the simultaneous interpretation function. Participants select the simultaneous interpretation channel through the paperless interface and listen to the corresponding language

System Configuration





GONSIN CONFERENCE EQUIPMENT CO.,LTD.
www.gonsin.com



English WeChat



All rights reserved. The information and specifications included are subject to change without prior notice.