

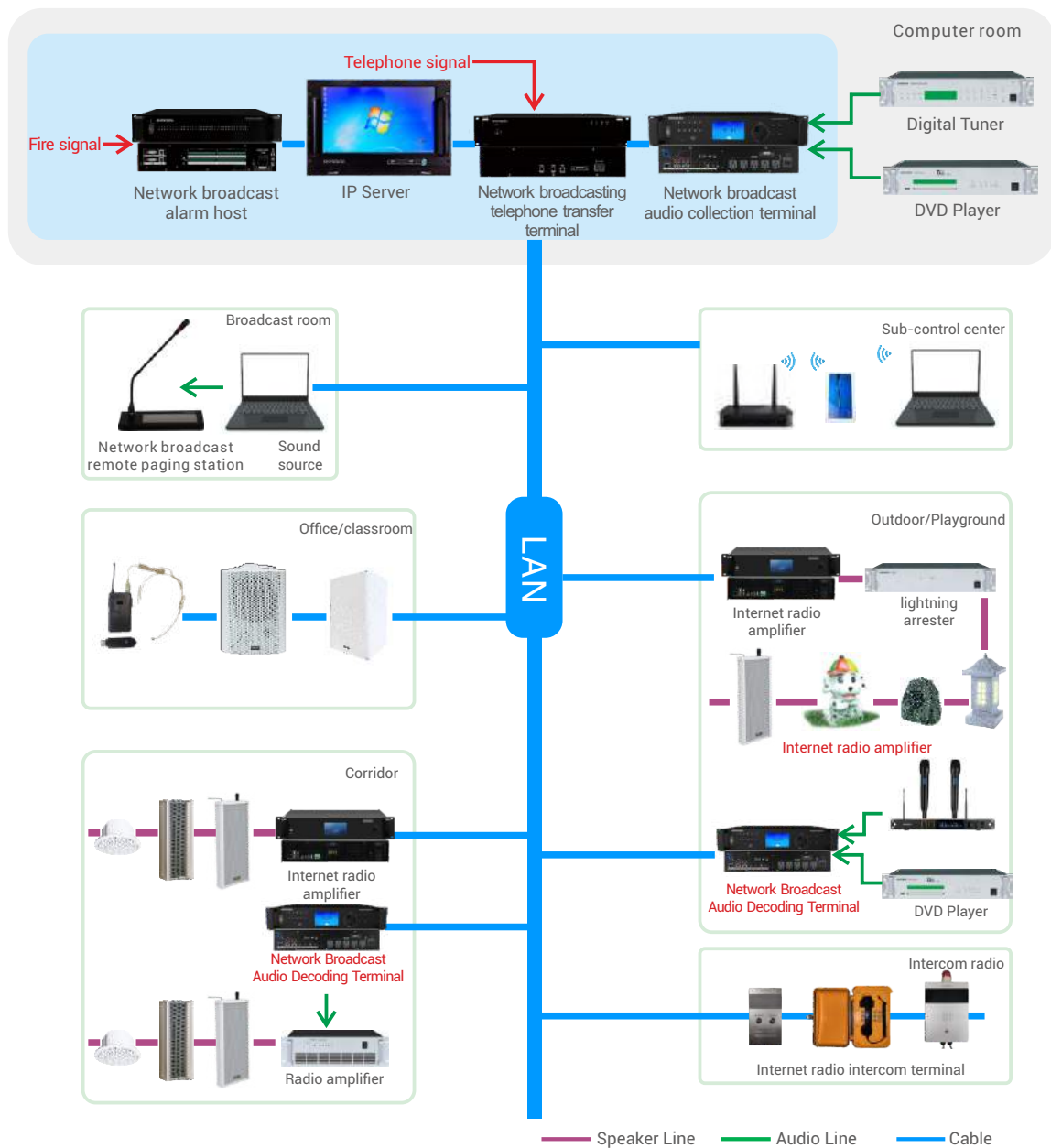


# Digital Public Address System

# IP Public Address System

GX-PB8100 Network PA & Intercom System is a comprehensive AV communication system integrating computer network, VoIP network, PSTN telecommunication network and mobile communication network. The system includes all kinds of network terminals like IP Network Server, Intercom Broadcast Paging Station, Network Fire Collector, Network Audio Collector, Network Audio Decoder, IP Amplifier, IP Speaker, Smart Video Phone, Network Help Intercom, etc. It can operate stably for long under low and high temperature environment, with high performance, low power consumption and 7\*24 hours working design. And It can centrally manage all network terminal equipments, and can upgrade and maintain the program source, timing scheme and its equipment. Each terminal can be partitioned freely without line limitation. Support timing settings, according to the schedule of work and rest; Support the audio source of the database in any terminal on-demand server; Support fire alarm access.

This system is suitable for office building cluster, school, station, hospital, hotel, airport, factory, shopping center and other large-scale places.



## System Function

- **Emergency broadcast**

Support fire alarm linkage, and docking with the fire center, realize that in an emergency, the designated alarm area will give priority to playing the alarm sound. It is simple to set up, powerful, and meets the national fire alarm acceptance requirements

- **Remote paging broadcast**

through the network broadcast remote paging station or mobile terminal software , can realize the whole area, district or designated terminal broadcast or intercom.

- **Emergency broadcast**

Support fire alarm linkage, and docking with the fire center, realize that in an emergency, the designated alarm area will give priority to playing the alarm sound. It is simple to set up, powerful, and meets the national fire alarm acceptance requirements. Remote paging broadcast through the network broadcast remote paging station or mobile terminal software , can realize the whole area, district or designated terminal broadcast or intercom.

- **Voice intercom**

Through the network intercom terminal, you can connect to the designated intercom terminal for two-way intercom by one-key or dial-up call, and realize emergency call or business consultation

- **Text broadcast**

The system is equipped with a leading text-to-speech module, which has the characteristics of good sound quality, humanized voice and non-rigid. The user only needs to input the text in the task box to convert it into audio and transmit it to the designated area

- **Remote control**

The computer installs the network broadcast sub-control software to realize the control of the whole system broadcast task in the local area network or the wide area network.

- **Support mobile phone control**

After the mobile phone is installed with the APP , it can be authorized to perform functional operations on the entire area, partition or designated terminal. It has the functions of real-time file playback, real-time speech, timing tasks, program management, playback control, and terminal status viewing.

- **Support SMS access function**

Send a short message to the short message module through the mobile phone; after the short message module receives the short message, the system converts it into a voice file and broadcasts it to the designated terminal; the set terminal triggers the system alarm, and the alarm task presets the corresponding information and sends it to the designated mobile phone via the short message module. It is mainly applied in reservoirs, power stations, mines, schools, sports venues and other places.

- **Support phone access function**

With the network broadcast telephone transfer terminal, it can realize PSTN, SIP, MGCP telephone access, and realize the function of district or whole district telephone broadcasting.

- **Environmental monitoring function**

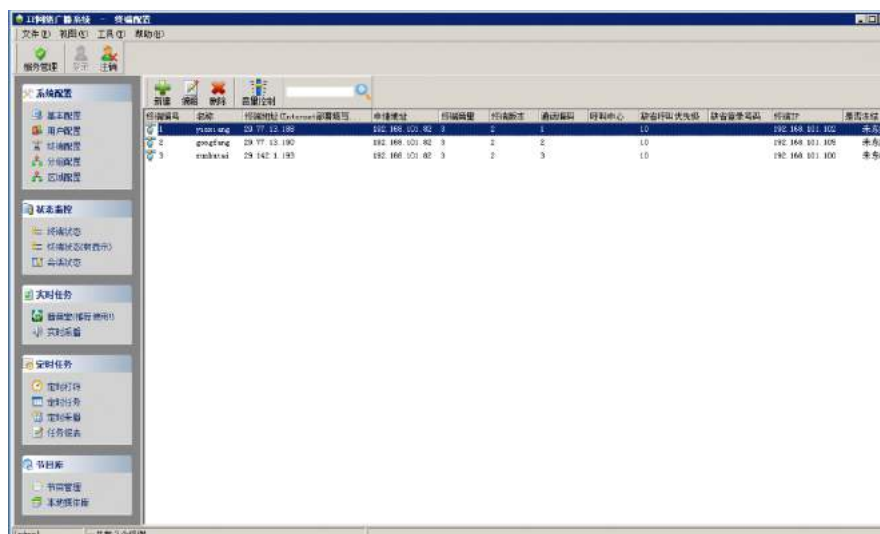
It can monitor and record the surrounding environment of the terminal to meet the requirements of teaching evaluation and system failure detection

- **Multiple backup function**

Supports server hot backup. After the system builds a backup server, when the main server fails, the backup server is automatically activated without affecting the normal operation of the system. Supports constant voltage backup function, which can be connected with traditional broadcast constant voltage signals to form a dual backup broadcast system. When the network fails, the system automatically switches to traditional broadcast signals to meet school exams and other important occasions.

## Network Broadcast Control Software

GX-PB8100S-K/GX-PB8100F-K

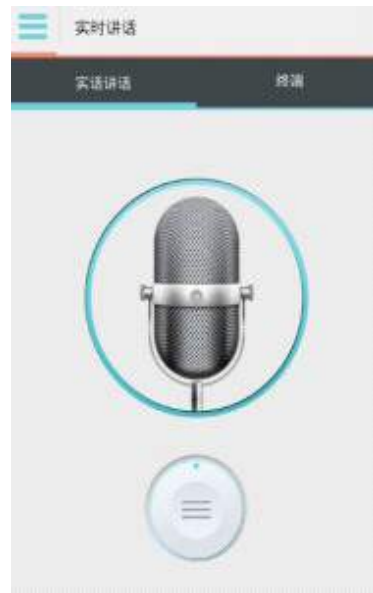


### Features

- Adopt C/S architecture to have a stable operating experience, and support to build systems in LAN and WAN environments
- With background broadcast, emergency broadcast, remote paging broadcast, voice intercom, text broadcast, on-site monitoring, remote sub-control, multiple backup functions, support SMS access, phone access, mobile phone control.
- It has the function of program source management, providing all terminals with timed playback or real-time on-demand services, and two-way terminals can arbitrarily request program library resources
- The program source supports the collection of analog audio sources (microphone, CD, tuner, etc.) and audio digital files, and the number of program sources is not limited
- Support 320kbps high-quality audio file playback, the system has better sound quality, and has the function of volume analysis and gain adjustment, which can quickly adjust the playback volume of the audio source file to be consistent.
- Support timed tasks, can write timed tasks according to the schedule of work and rest, realize timed ringing and play music, and the number of timed tasks is not limited.
- Timed tasks support power management functions. Devices with controlled power output, such as network broadcast audio collectors and network broadcast audio decoders, can be set to provide regular power supply, which is intelligent and environmentally friendly.
- Support text broadcast function, text content can be input through SMS (collocation) network or server, the system can convert text content into voice and broadcast to designated terminal
- It supports the rebroadcasting of Internet radio stations, which can convert Internet radio programs into Internet broadcasting system audio sources and send them to designated broadcasting terminals for playback
- Customized grouping operations can be performed on all partitions, to achieve broadcast and volume adjustment operations for any single point, grouping, partition or all areas.
- remote control to control the broadcast of the flag raising, sports meeting and other activities that require programs on the playground rostrum.
- It supports remote paging broadcast. The remote paging station or mobile phone terminal software can be broadcast through the network, which can realize the broadcast or intercom of the whole area, zone or designated terminal.
- Remote sub-control function: the computer installs the network broadcast sub-control software to control the entire system playback task in the local area network or wide area network. So as to realize that the leader can remotely control the whole district, Partition, group speech.
- It supports the environmental monitoring function, which can monitor and record the surrounding environment of the terminal to meet the requirements of teaching evaluation and system failure detection.
- Real-time monitoring of the status of all terminals and monitoring of all playback status or on-demand status
- Support fire alarm linkage, and dock with the fire center, so that in emergency situations, the designated alarm area will give priority to playing the alarm sound.
- Support the hosting function, the intercom terminal can be set up for real-time and timed hosting, and transfer the call of the terminal to other terminals, which is convenient for on-duty management
- Support mobile phone WIFI control, authorized mobile phone can realize the whole area, partition, point-to-point playback control, real-time speech timing task management, program management, system status viewing and other operations
- Support wireless remote control function, you can use the remote wireless ■ With the network broadcasting telephone transfer terminal, it can realize PSTN, SIP, MGCP telephone access, and realize the telephone broadcasting function of the district or the whole district
- Supports offline playback of timing tasks, the terminal is equipped with offline storage modules, and the terminal can also play timing tasks when there is no network
- With dual server hot stand-by function, backup servers can be deployed in the same local area network. When the main server of the system fails, it can automatically switch to the backup server for operation
- It supports the constant voltage backup function, which can be connected with traditional broadcast constant voltage signals to form a double backup broadcast system. When the network fails, the system automatically switches to the traditional broadcast signal to meet school exams, and other important occasions
- Support system backup function, you can turn off the set broadcast data and backup it into a file. When the system is reinstalled, the broadcast data can be quickly restored
- Support log query function, which can realize information query such as intercom, paging, emergency call, environmental monitoring, user operation, system operation, etc.
- Support network upgrade function, remote upgrade and maintenance of online terminal.
- Support third-party platform interface development, provide standard SDK package, and realize docking with other system platforms

## Network Broadcast Control Software

GX-PB8100A-K



### Features

- Support WIFI access, you can access the broadcasting system through mobile phone, tablet WiFi, and the connection is simple.
- Support program on-demand, music on the server can be ordered to any one or more terminals within the authority to play.
- It supports remote paging and can broadcast speech to the terminals within the authority.
- Support file upload, you can upload the music on the mobile phone to the server, and on-demand designated terminals within the authority.
- Support timing task management, Pad version software supports timing task management
- Support user authority management, each user authority can be set through the network broadcast control software, and the user can control after logging in system designated terminal. Support multiple users to log in at the same time, high-privileged users interrupt the tasks of low-privileged users.
- Support real-time viewing of terminal status, real-time viewing of the playback status and connection status of terminals within the authority, which is convenient for management.

## IP Server

### GX-PB8101A-K



GX-PB8101A-K

#### Features

- Industrial-grade server, built-in SSD solid state drive, has super fast system startup speed, and the system is stable and reliable.
- Rack-mounted chassis body design, using high-strength aluminum alloy panel, high-quality unpolished galvanized steel plate, can resist 4KV strong electromagnetic interference, dust and impact resistance.
- Using a 17-inch industrial-grade FHD high-definition touch screen, the control interface is intuitive and easy to understand, and the touch is sensitive.
- It is equipped with a hidden push-pull keyboard and touchpad, which can be operated without an external keyboard and mouse.
- High performance, low power consumption, 7\*24 hours working design, suitable for long-term stable operation under low temperature and high temperature environment.
- With USB, COM, VGA, DVI, PCIE interfaces, it is convenient to expand the input and output.
- With MIC\_IN and LINE\_IN interfaces, it supports to collect and broadcast external audio sources to the desired terminal for playback at any time
- Built-in network broadcasting service software to configure, manage, maintain and monitor the status of terminal equipment.

#### Technical Parameters

Model	GX-PB8101A-K
Configuration	I3 CPU, 4GB memory, 128G SSD hard disk
Display	17.3 inches, 1920*1080dpi, 300cd/m <sup>2</sup>
Software operating platform	Windows 7 trial version
Serial port	RS232*5, RS485*1
USB interface	USB3.0*4, USB3.0*2
Display interface	VGA*1, DVI*1
Audio interface	MIC_IN*1, LINE_IN*1, LINE_OUT*1
Network interface	LAN*2, support 10/100/1000Mbps
Others	PS/2*1, PCIE*16*1, PCIE*16*1, PCI*2
Input power	AC100-220V 50/60Hz
Product size W*D*H	485×303×354mm (without handle)
Product weight	18.5Kg
Working temperature	-10°C~60°C
Storage temperature	-20°C~70°C
Working humidity	5%~95% (non-condensing state)
Storage humidity	5%~95% (non-condensing state)

## Broadcast System Timer Module

### GX-PB8101T-K

#### Features

- The module is built in the broadcast host to correct the time.

## Network Broadcast Remote Paging Station

**GX-PB8102A-K**



GX-PB8102A-K

### Features

- Based on TCP/IP, UDP, IGMP protocol, support LAN and WAN transmission, can be installed anywhere the network can be reached, to achieve access and control of servers and other network equipment.
- Using 7-inch capacitive touch screen, user-friendly user interface, touch the buttons of the screen, you can realize the broadcast or intercom of the whole area, partition or designated terminal
- Equipped with gooseneck microphone, built-in 3W full-range speaker to support hands-free communication.
- With 3.5mm microphone interface, professional microphones can be connected
- With 1 line input, it can be connected to a local audio source, and the local audio source can be collected to a designated terminal or zone for playback
- With 1 USB, you can play MP3 files on the U disk to the designated terminal or partition.
- Support one local line output, and can expand the power amplifier.
- With audio output interface, with earphones or active speakers, local monitoring of server programs can be realized.
- It supports one-key calling of common areas and all areas, 30 common areas can be set according to requirements.
- Brings the electric ringtone prompt function, which can support one-key receiving help, intercom function, and quick connection
- APP sub-control software that supports mobile phones or tablets (wireless WIFI, can control on-demand, paging and other functions in real time)
- With user password and authority management.
- Support remote upgrade pushed by the server.
- Support Simplified Chinese and English language selection.

### Technical Parameters

Model	GX-PB8102A-K
Display	7-inch LCD screen
Audio format	Mp3
Audio bit rate	8Kbps~320Kbps adaptive
Frequency response	40Hz~20KHz (±3dB)
Total harmonic distortion	(THD@1W): ≤1%
Signal to noise ratio	>80dB
Sampling rate	8K~48K
Input level	400mV (standard 3.5mm audio interface)
Output level	0.775V (standard 3.5mm audio interface)
Built-in speaker	8Ω/5W
Transmission rate	10/100Mbps
Support protocol	ARP, UDP, TCP/IP, ICMP, IGMP (multicast)
Network delay	≤50ms

Power supply	DC12V/2A
Rated power	<3W
Maximum power consumption	20W
Working temperature	0°C~50°C
Product size	250×150×56mm
Product weight	1.16Kg

## Network Broadcast Alarm Host

**GX-PB8103A-K/GX-PB8103B-K**



GX-PB8103A-K



GX-PB8103B-K

### Features

- Based on TCP/IP, UDP, IGMP protocol, support LAN and WAN transmission, can be installed anywhere the network can be reached, to achieve access and control of servers and other network equipment.
- The panel is equipped with 16 level indicator lights to display the working status, and supports 16 channels of fire alarm signal access. The access mode can be set to short circuit, 12V-24V signal.
- It has 4 short-circuit outputs, which can be connected to door locks or warning lights to realize joint control GX-PB8103A-K
- It supports the expansion connection of multiple alarm hosts to realize arbitrary expansion of the control area.
- The alarm area can be limited to the accident area or extended to several neighboring areas, which is determined by the server's pre-programming.
- The alarm sound is stored on the server, no external alarm sound source is required, and the alarm playback sound can be customized through the management software.
- It has long-term, continuous, stable, efficient and reliable operating performance.
- The chassis adopts the international 2U rack-mounted sheet metal standard chassis structure, beautiful in appearance, aluminum alloy panel, beautiful and practical

### Technical Parameters

Model	GX-PB8103A-K	GX-PB8103B-K
Alarm input interface	16 channels	32 channels
Alarm signal type	0V, 12V, 24V	
Network interface	RJ45*1	RJ45*2
Short circuit output	4 channels	/
Power supply	AC220V±10% 50Hz	
Power consumption	20W	
Product size	485×340×88mm	
Product weight	6Kg	
Environmental humidity	20%-80% relative humidity, no frost	

## Network Broadcast Audio Collection Terminal

**GX-PB8104A-K**



GX-PB8104A-K

### Features

- Based on TCP/IP, UDP, IGMP protocol, support LAN and WAN transmission, can be installed anywhere the network can reach, to achieve server and other network equipment access and control
- With 4.3-inch color display and one-key shuttle function, the interface is clear and easy to operate
- Built-in audio collection module, with 8K~48K sampling rate, with high-quality sound collection effect, the analog stereo sound source can be converted into a network audio signal



- With FM radio module, U disk player module, no need to connect DVD, tuner and other audio source equipment, also realize real-time sound collection
- With 4 audio line inputs and 2 microphone inputs, the volume of each channel is independently controlled
- With 5 controllable power interfaces, each power supply can be turned on and off automatically or manually.
- The system can be set to supply power regularly, intelligent environmental protection and saving
- With 10 programmable buttons, button tasks can be set freely
- With wireless remote control, it supports remote control terminal playback
- Rack-mounted 2U standard chassis design, aluminum alloy panel, beautiful and practical

### Technical Parameters

Model	GX-PB8104A-K
Display	4.3-inch color display
Network interface	RJ45*1, 100Mbps/10Mbps
Audio interface	AUX_IN*4, MIC_IN*2
Memory interface	USB (U disk)*1, SD (U disk)*1
Controllable power output	5 channels
Other interfaces	USB (extended Bluetooth)*1, FM antenna*1, remote control antenna*1
Support protocol	TCP/IP, UDP, IGMP (multicast)
Frequency response	20Hz~20KHz
Harmonic distortion	THD≤0.1%
Sampling rate	8K~48K
UX sensitivity	0dB
Power supply	AC220V±10% 50Hz
Power consumption	20W
Standby power consumption	<3W
Product size	485×340×88mm
Product weight	5.1Kg
Working temperature	5℃~40℃
Environmental humidity	20%~80% relative humidity

## Remote Control

### GX-PB8104R-K

#### Features

- Use with the network broadcast audio collector GX-PB8104A-K to realize remote control
- Simple and generous appearance, user-friendly operation mode
- Super strong remote control distance—more than 500 meters (barrier-free)
- With 12 shortcut keys, the key function can be customized through software
- The task key can realize any music playback or real-time call at any time, any number of terminals, and any volume
- The function keys can realize pause/resume, stop, previous song, next song, volume up, and volume down operations for the current task
- 10 levels of user priority can be preset
- 1000 levels of operational task priority can be preset



#### Technical Parameters

Model	GX-PB8104R-K
Buttons	12, the button function can be customized
Carrier frequency	315Mhz
Input power	9V alkaline battery
Power consumption	≤5W
Product weight	0.18Kg
Working temperature	-20℃~+60℃
Working humidity	10%~9%

## Network Broadcast Audio Decoding Terminal

**GX-PB8105A-K**



### Features

- Based on TCP/IP, UDP, IGMP protocol, support LAN and WAN transmission, can be installed anywhere the network can reach, to achieve access and control of servers and other network equipment
- With 4.3-inch color capacitive touch screen and one-key shuttle function, the interface is clear and easy to operate
- Through the Android or IOS sub-control software, the on-demand and paging functions can be controlled in real time
- The built-in independent audio decoding module supports the conversion of network audio signals into analog stereo signal output, and realizes the playback of background music, emergency paging, alarm signals, etc. from the server system
- It has a USB interface, supports MP3 playback, and realizes local playback of audio
- Support 8~768Kbps high bit rate format playback, with high fidelity sound effect
- It has 1 line input and 1 microphone input, supports local audio source playback, and the microphone volume is independently adjustable
- It has 1 line output to connect to the power amplifier for amplified sound output
- With 1 custom short-circuit input, 1 short-circuit output
- With 1 emergency output, with 24V strong cut function
- With 2 controllable power interfaces, each power supply can be automatically or manually turned on and off, the system can be set to supply power at a fixed time, intelligent environmental protection and saving
- An offline storage module can be selected, and it can also realize timing playback and timing ringing even when it is out of the network
- An optional USB Bluetooth module can be used to push audio to the terminal for playback via mobile phone Bluetooth
- Optional USB 2.4G wireless microphone module to meet the needs of local microphone amplification output

### Technical Parameters

Device model	GX-PB8105A-K
Display size	4.3 inch color capacitive touch screen
Network interface	RJ45*1, 100Mbps/10Mbps
Audio interface:	AUX_IN*1, MIC_IN*1, LINE_OUT*1
Memory interface	USB (U disk)*1, maximum support 128G
Controllable power output	2 channels, total power ≤2000W
Other interfaces	USB (extended Bluetooth)*1, USB (extended 2.4G wireless microphone)*1, short-circuit input*1, short-circuit output*1, fire short-circuit output*1, 24V strong cut power output*1
Support protocol	TCP/IP, UD, IGMP
Audio format	Mp3
Audio mode	16-bit stereo CD sound quality
Bit rate	8k~768Kbps
AUX sensitivity	-12dB
MIC sensitivity	-40dB
Frequency response	20Hz~20KHz
Harmonic distortion	THD≤0.1%
Signal to noise ratio	≥65dB
Short circuit input/output	0V<5A
Power supply	AC220V±10%
Power consumption	45W
Standby power consumption	<3W
Product size	485×340×88mm
Product weight	6.28Kg
Working temperature	5℃~40℃
Environmental humidity	20%~80% relative humidity, no condensation

## Network Broadcast Audio Decoding Terminal

**GX-PB8105C-K**



### Features

- Based on TCP/IP, UDP, IGMP protocol, support LAN and WAN transmission, can be installed anywhere the network can reach, to achieve access and control of servers and other network equipment
- Through the Android or IOS sub-control software, you can control the on-demand and paging functions in real time
- Built-in 4 independent audio decoding modules, supporting simultaneous conversion of 4 network audio signals into analog stereo signal output, each channel of audio does not interfere with each other, realizing the playback of background music, emergency paging, alarm signals from the server system, etc.
- The volume of 4 audio channels can be adjusted independently
- It has 4 line outputs, which are respectively connected to power amplifiers for amplified sound output.
- With 4 custom short-circuit inputs and 4 short-circuit outputs,
- With 4 controllable power ports, each power supply can be turned on and off automatically or manually, and the system can be set to supply power regularly, which is intelligent and environmentally friendly.
- Optional offline storage module, which can also realize timing play and timing ringing even if it is out of the network.

### Technical Parameters

Model	GX-PB8105C-K
Network interface	RJ45*1, 100Mbps/10Mbps
Audio interface	LINE_OUT*4
Controllable power output	4 channels, total power ≤2000W
Other interfaces	short-circuit input*4, short-circuit output*4
Support protocol	TCP/IP, UD, IGMP
Audio format	Mp3
Audio mode	16-bit stereo CD sound quality
Bit rate	8k~768Kbps
Frequency response	20Hz~20KHz
Harmonic distortion	THD≤0.1%
Signal to noise ratio	≥65dB
Short circuit input/output	0V<5A
Power supply	AC220V±10%
Power consumption	45W
Standby power consumption	<3W
Product size	485×340×88mm
Product weight	6.28Kg
Working temperature	5℃~40℃
Environmental humidity	20%~80% relative humidity, no condensation

## Network Broadcast Wall-mounted Terminal

**GX-PB8106A-K/GX-PB8106B-K/GX-PB8106C-K/GX-PB8106D-K**



GX-PB8106A-K/GX-PB8106B-K

GX-PB8106C-K/GX-PB8106D-K

### Features

- Based on TCP/IP, UDP, IGMP protocol, support LAN and WAN transmission, can be installed anywhere the network can reach, to achieve access and control of servers and other network equipment
- Through the Android or IOS sub-control software, you can control the on-demand and paging functions in real time;
- The built-in audio decoding module supports the conversion of network audio signals into analog stereo signal output, and realizes the playback of background music, emergency paging, and alarm signals from the server system.
- With a USB interface, it supports local playback of MP3 audio in USB
- Support 8~768Kbps high bit rate format playback, with high fidelity sound effect
- It has 1 line input, 1 microphone input, supports local audio source playback, and the microphone volume is independently adjustable.
- It has 1 line output to connect to the power amplifier for amplified sound output.
- With 1 custom short-circuit input and 1 short-circuit output.
- It has a 100V constant voltage input interface, supports constant voltage backup function, and can build a dual backup broadcast system to meet important occasions such as school exams.
- With custom selection of audio source priority, support for local priority, network priority, and mixed output options
- Built-in 2 \* 20 W stereo power amplifier, which can be extended to connect to passive speakers
- An offline storage module can be selected, and it can also realize timing playback and timing ringing even when it is out of the network.
- It supports remote server management and remote upgrade, which is convenient for users to maintain.

### Technical Parameters

Model	GX-PB8106A-K	GX-PB8106B-K	GX-PB8106C-K	GX-PB8106D-K
Network interface	RJ45*1, 100Mbps/10Mbps			
Audio interface	AUX_IN*1, MIC_IN*1, LINE_OUT*1			
Constant voltage input interface	/	100V	/	100V
Memory interface	USB*1, maximum support 128G			
Other interfaces	USB (extended Bluetooth)*1, USB (extended 2.4G wireless microphone)*1, short-circuit input*1, short-circuit output*1, fire-fighting short-circuit output*1, 24V strong cut power output*1			
Support protocol	TCP/IP, UD, IGMP			
Audio format	MP3			
Audio mode	16-bit stereo CD sound quality			
Bit rate	8k~768Kbps			
A U X sensitivity	-12dB			
MIC sensitivity	-10dB			
Short circuit input/output	0 V			
Frequency response	20Hz-20KHz			
Harmonic distortion	THD≤0.1%			
Signal to noise ratio	≥70dB			
Output power	2×20W			
Power consumption	<45W			
Protection circuitInput	overload, over temperature, short circuit protection			
Input power	DC24V			
Product size	255×188×45 mm			
Product weight	1.36Kg	1.78Kg	1.48Kg	2.48Kg
Working temperature	5℃~40℃			
Environmental humidity	20%~80% relative humidity			

## Webcast on-demand Terminal

### GX-PB8107A-K

#### Features

- Based on TCP/IP, UDP, IGMP protocol, support LAN and WAN transmission, can be installed anywhere the network can reach, to achieve access and control of servers and other network equipment
- With 5-inch color capacitive touch screen, the interface is clear and easy to operate
- Through the Android or IOS sub-control software, the on-demand and paging functions can be controlled in real time;
- The built-in audio decoding module supports the conversion of network audio signals into analog stereo signal output, which can play background music, emergency paging, alarm signals, etc. from the server system.
- With USB interface, it supports local playback of MP3 audio in USB
- Support 8~768Kbps high bit rate format playback, with high fidelity sound effect
- It has 1 line input to support local audio source playback
- With 1 short-circuit input, you can customize playback tasks, such as welcome music, etc.
- Built-in 2 \* 20 W stereo power amplifier, which can be extended to connect to passive speakers
- An offline storage module is optional, and it can also realize timing playback and timing ringing even when it is disconnected from the network
- Optional USB Bluetooth module can be used to push audio to the terminal for playback via mobile phone Bluetooth.
- Support remote server management and remote upgrade, which is convenient for users to maintain.



#### Technical Parameters

Model	GX-PB8107A-K
Network interface	RJ45*1, 100Mbps/10Mbps
Memory interface	USB (U disk)*1, maximum support 128G
Other interfaces	USB (extended Bluetooth)*1, short-circuit input*1
Support protocol	TCP/IP, UD, IGMP
Audio format	Mp3
Audio mode	16-bit stereo CD sound quality
Bit rate	8k~768Kbps
Frequency response	20Hz-20KHz
Harmonic distortion	THD≤0.1%
Signal to noise ratio	≥70dB
Output power	2×20W
Power consumption	<45W
Input power	DC24V
Product size	172×50×86mm
Working temperature	5°C~40°C
Environmental humidity	20%~80% relative humidity

## Bluetooth Module

### GX-PB8109A-K

#### Features

- Use with devices with a Bluetooth expansion interface
- It supports pushing audio to the terminal for playback via mobile phone Bluetooth
- USB standard 5V power supply
- Bluetooth 4.0 technology



#### Technical Parameters

Model	GX-PB8109A-K
Interface	USB
Protocol	Bluetooth 4.0
Voltage	5V
Product size	26×84×9mm

## Offline Storage Module

### GX-PB8111A-K

#### Features

- Use with equipment with offline storage module interface, and be fixedly installed inside the equipment before leaving the factory
- Built-in 4G memory chip, supports timing tasks to be downloaded to the playback terminal and power amplifier
- It supports playing timed tasks even when the network is disconnected



# Wireless Microphone Module

**GX-PB8110B-K**



## Features

- ▣ Use with network broadcast speaker products
- ▣ Adopt built-in electret pickup, design independent pickup cavity, can effectively suppress whistling, improve the pickup distance, while the acoustic sponge pad placed in the cavity, minimize noise and new noise elimination circuit design, can eliminate the switch-on impact sound
- ▣ Support the working frequency band of 1GHz
- ▣ Support long-distance transmission function: can be more than 30 meters in an open area within the stable transmission of audio data
- ▣ Support the same microphone can be used in any classroom, and do not interfere with each other, to truly achieve a division of a microphone
- ▣ Support UHF and infrared two frequency pairing mode: power on automatically search for clean channels and automatic pairing, to ensure that the product does not crosstalk, strong anti-interference and transmission stability; infrared frequency pairing to ensure the uniqueness of the paired equipment, to eliminate crosstalk
- ▣ Adopt 24kHz sampling rate to ensure the quality of the human voice, before and after transmission through unique technology to ensure that the received signal to maintain high fidelity effect
- ▣ Support volume adjustment function: the volume of the microphone can be adjusted, and has a memory function and a key mute function
- ▣ Support built-in microphone and external microphone
- ▣ Support laser pointer
- ▣ Support PPT page flip and one key black screen / recovery function, can be used with the projector or computer display explanation; PPT page flip module support hot-swappable, no need to install driver software, support the use of PPT page flip function without opening the host
- ▣ Support 3.5MM audio input and microphone input
- ▣ With OLED high-definition LCD display, support display signal strength, frequency mode, power (charging display), working channel, volume, PPT and other information
- ▣ Built-in rechargeable high-performance 3.7V polymer lithium battery with protection circuit, safe and reliable, MICROUSB interface charging, 2 hours full charge can last for ≥ 8 h
- ▣ Ergonomic pen-shaped microphone design, comfortable grip, key zoning design, simple operation; fashionable and beautiful appearance, the entire microphone (including the built-in microphone) weighs less than 40 grams, light weight, easy to hold; intelligent low energy consumption design, no signal input within 60 minutes of automatic shutdown, energy saving and environmental protection

## Technical Parameters

Model	GX-PB8110B-K		
Composition	Transmitter	Audio Receiver Module	USB Receiver
Voltage		5V	
Current	35mA	30mA	25mA
Sampling accuracy		16Bit	
Sampling rate		24kHz	
Frequency response		20Hz~12kHz@±1.5dB	
Dynamic range		85dB	
Distortion		0.1%	
Signal to Noise Ratio		85dB	
System delay		10ms	
Full-amplitude input		169mVrms	
Full-amplitude output		715mVrms	
Input/output gain		14.6:1	
Frequency range		1GHz	
Frequency selection method		Automatic option	
Data rate		2Mbps	
Transmit power		>10dBm	
Maximum working distance		Indoor>30m	
Charging		5V-800mA~2A Power adapter	
Net weight		40g	
Product Size	Φ146.5×19.8mm	Φ39×22mm	Φ44×18mm
Working temperature		5℃~40℃	
Working humidity		20%~80%Relative humidity, no condensation	
Storage temperature		20~30℃	
Storage humidity		25%~50%	

# Wireless Microphone Module

**GX-PB8110C-K**



## Features

- ▣ Use with network broadcast speaker products
- ▣ Adopt the new noise elimination circuit design, can eliminate the switching impact sound and intelligent low energy consumption design, no signal input within 60 minutes of automatic shutdown, energy saving and environmental protection
- ▣ Support the working frequency band of 1GHz
- ▣ Support long-distance transmission function: stable transmission of audio data within an open area of more than 20 meters
- ▣ Support the same microphone can be used in any classroom, and do not interfere with each other, to truly achieve a teacher a microphone
- ▣ Support UHF, UL, infrared three kinds of frequency pairing: power on automatically search for clean channels and automatic pairing, to ensure that the product does not crosstalk, strong anti-interference and transmission stability; infrared frequency pairing to ensure the uniqueness of the paired equipment, to eliminate crosstalk
- ▣ Adopt 24kHz sampling rate to ensure the quality of the human voice, before and after transmission through unique technology to ensure that the received signal to maintain high fidelity effect
- ▣ Support volume adjustment function: the volume of the microphone can be adjusted, and has a memory function and a key mute function
- ▣ Support PPT page flip and one key black screen / recovery function, can be used with the projector or computer display explanation; PPT page flip module support hot-swappable, no need to install driver software, support the use of PPT page flip function without opening the host
- ▣ Built-in rechargeable high-performance 3.7V polymer lithium battery, with protection circuit, safe and reliable, MICROUSB interface charging, 2 hours of full power can last  $\geq$  6h
- ▣ Fashionable and beautiful appearance, the entire microphone (including built-in wheat) weighs less than 15 grams for convenient ear hanging

## Technical Parameters

Model	GX-PB8110C-K		
Composition	Transmitter	Audio Receiver Module	USB Receiver
Voltage	3.7V	5V	5V
Current	17mA	30mA	25mA
Sampling Accuracy	16Bit		
Sampling Rate	24kHz		
Frequency Response	100Hz~12kHz@ $\pm$ 3dB		
Dynamic Range	76dB		
Distortion	<0.1% @94dBSPL,1kHz		
Signal to Noise Ratio	76dB		
System Delay	10ms		
Full-amplitude input	106mVrms		
Full-amplitude output	525mVrms		
Frequency range	1GHz		
Frequency selection method	Key combination for switching		
Data rate	2Mbps		
Transmit power	>10dBm		
Maximum working distance	Indoor >20m		
Charging	5V-800mA~2A Power adapter		
Net weight	0.015g		
Operating temperature	5°C~40°C		
Working Humidity	20%~80% Relative humidity, no condensation		
Storage Temperature	20~30°C		
Storage Humidity	25%~50%		

## Internet Radio Amplifier

GX-PA4001/GX-PA4002/GX-PA4003/GX-PA4004/  
GX-PA4005/GX-PA4006/GX-PA4007/GX-PA4008/  
GX-PA4009/GX-PA4010/GX-PA4011



### Features

- Based on TCP/IP, UDP, IGMP protocol, support LAN and WAN transmission, can be installed anywhere the network can be reached, to achieve access and control of servers and other network equipment.
- With 4.3-inch color capacitive touch screen, the interface is clear and easy to operate.
- Through Android or IOS sub-control software, you can control on-demand and paging functions in real time.
- Built-in 1 channel audio decoding module, supporting network audio signal conversion into analog stereo signal output, realizing playing background music, emergency paging, alarm signal, etc. from the server system.
- With USB interface, it supports local playback of MP3 audio in USB.
- Support 8~768Kbps high bit rate format playback, with high fidelity sound effects.
- It has 1 stereo line input and 1 microphone input, supports local audio source playback, and the microphone volume is independently adjustable.
- It has 2 mono line output, which can be extended to connect the power amplifier output.
- It has 2 sets of 100V constant voltage output, connected to constant voltage broadcast speakers, which can meet the requirements of different occasions.
- With 1 short circuit output, when there is a task, the short circuit triggers the work.
- With 1 emergency output, with 24V strong cut function.
- It has a 220V5A intelligent control power interface, which can be turned on and off automatically or manually. The system can be set to supply power regularly, which is intelligent and environmentally friendly.
- With output short-circuit protection, output limiting protection, overload protection, overheating protection and other protective measures to ensure the safe use of power amplifiers and speakers.
- With indicator lights such as power indicator, signal indicator, peak clipping indicator, protection indicator, etc., the status of the power amplifier is clear at a glance.
- It has the characteristics of high efficiency and energy saving, light weight, small size, high power and strong load capacity.
- An offline storage module is optional, and it can also realize timing playback and timing ringing even when it is disconnected from the network.
- An optional USB Bluetooth module can be used to push audio to the terminal for playback via mobile phone Bluetooth.
- Optional USB 2.4G wireless microphone module to meet the needs of local microphone amplification output.
- Support remote server management and remote upgrade, which is convenient for users to maintain.

### Technical Parameters

Model	GX-PA4001/GX-PA4002/GX-PA4003/GX-PA4004/GX-PA4005/GX-PA4006/ GX-PA4007/GX-PA4008/GX-PA4009/GX-PA4010/GX-PA4011
Output power	60W/120W/240W/360W/500W/600W/800W/1000W/1200W/1500W/2100W
Constant voltage output	100V ± 5%
Display size	4.3 inch capacitive touch screen
Network interface	RJ45*1, 100Mbps/10Mbps
Audio interface	AUX_IN*1, MIC_IN*1, LINE_OUT*2
Memory interface	USB (U disk)*1, maximum support 128G
Other interfaces	USB (extension 2.4G wireless microphone)*1, short-circuit output*1, short-circuit input*1, emergency output*1, 24V forced cut power output*1,
Support protocol	AC220V 5A OUT*1TCP/IP, UD, IGMP
Audio format	Mp3
Audio mode	16-bit stereo CD sound quality
Bit rate	8k~768Kbps
AUX sensitivity	-12dB
MIC sensitivity	-40dB
Frequency response	20Hz~20KHz
Harmonic distortion	THD ≤ 0.1%
Signal to noise ratio	≥ 70dB
Short circuit output	0V<5A
Protection circuit	overload, over temperature, short circuit protection, DC protection
Power supply	AC220V ± 10% /50Hz
Standby power consumption	<3W
Product size	485 × 410 × 90mm
Product weight	8.48Kg/8.48Kg/8.48Kg/8.48Kg/8.5Kg/8.5Kg/8.5Kg/9.5Kg/9.5Kg/9.5Kg/9.5Kg
Working temperature	-5°C~60°C
Environmental humidity	20%~80% relative humidity



## Internet Radio Amplifier

GX-PA4012/GX-PA4013/GX-PA4014/GX-PA4015/  
GX-PA4016/GX-PA4017/GX-PA4018



### Features

- Based on TCP/IP, UDP, IGMP protocol, support LAN and WAN transmission, can be installed anywhere the network can reach, to achieve access and control of servers and other network equipment
- Through the Android or IOS sub-control software, you can control the on-demand and paging functions in real time
- Built-in 4-channel switch encoding and decoding function
- Built-in 4-channel audio decoding module, which supports the conversion of network audio signals into analog stereo signal output, and realizes the playback of background music, emergency paging, alarm signals, etc. from the server system
- It has 1 stereo line input, supports local audio source playback, and the microphone volume is independently adjustable
- With 2-channel mono line output, extended connection power amplifier output
- With 2 sets of 100V constant voltage output, connected to constant voltage broadcast speakers, which can meet the requirements of different occasions
- With 1 short circuit output, when there is a task, the short circuit triggers the work
- With 1 emergency output, with 24V strong cut function
- The 4-channel emergency output free switching function, when there is a task, the emergency output can be linked to other equipment
- It has a 220V5A intelligent control power interface, which can be turned on and off automatically or manually. The system can be set to supply power regularly, which is intelligent and environmentally friendly
- With output short-circuit protection, output limiting protection, overload protection, overheating protection and other protective measures to ensure the safe use of power amplifiers and speakers
- With power indicator, signal indicator, peak clipping indicator, protection indicator
- With indicator lights such as signal indication and network indication function, the status of the power amplifier is clear at a glance
- It has the characteristics of high efficiency and energy saving, light weight, small size, high power, strong load capacity, etc
- An offline storage module is optional, and it can also realize timing playback and timing ringing even when it is disconnected from the network
- An optional USB Bluetooth module can be used to push audio to the terminal for playback via mobile phone Bluetooth
- Optional USB 2.4G wireless microphone module to meet the needs of local microphone amplification output
- Support remote server management and remote upgrade, which is convenient for users to maintain

### Technical Parameters

Model	GX-PA4012/GX-PA4013/GX-PA4014/GX-PA4015/ GX-PA4016/GX-PA4017/GX-PA4018
Output power	4×60W/4×120W/4×240W/4×360W/4×500W/ 4×600W/4×800W
Constant voltage output	100V±5%
Network interface	RJ45*1, 100Mbps/10Mbps
Audio interface	AUX_IN*1, MIC_IN*1, LINE_OUT*2
Memory interface	USB (U disk)*1, maximum support 128G
Other interfaces	USB (extension 2.4G wireless microphone)*1, short-circuit output*1, 24V strong cut power output*1, AC220V 5A OUT*1
Support protocol	TCP/IP, UD, IGMP
Audio format	Mp3
Audio mode	16-bit stereo CD sound quality
Bit rate	8k~768Kbps
AUX sensitivity	0dB
MIC sensitivity	-40dB
Frequency response	20Hz~20KHz
Harmonic distortion	THD ≤ 1% (1/4 rated power)
Signal to noise ratio	≥ 85dB
Short circuit output	0V<5A
Protection circuit	overload, over temperature, short circuit protection
Power supply	AC220V±10%
Standby power consumption	<3W
Product size	485×410×90mm
Product weight	11.2Kg/11.2Kg/11.2Kg/11.2Kg/11.5Kg/11.5Kg/11.5Kg
Working temperature	-10~60 degrees
Environmental humidity	20%~80% relative humidity

## Internet Radio Sound Column

GX-SP8021A-K/GX-SP8041A-K  
GX-SP8021B-K/GX-SP8041B-K



GX-SP8021A-K  
GX-SP8021B-K



GX-SP8041A-K  
GX-SP8041B-K

### Features

- The cabinet is made of thick aluminum alloy material, and the pure aluminum surface net is hardened and anti-oxidation treatment, which is durable and beautiful.
- Based on TCP/IP, UDP, IGMP protocol, support LAN and WAN transmission, can be installed anywhere the network can reach, to achieve access and control of servers and other network equipment
- The built-in audio decoding module supports the conversion of network audio signals into analog stereo signal output, and realizes the playback of background music, emergency paging, and alarm signals from the server system.
- With 1 custom short circuit input.
- It has 1 line input and supports local audio source playback.
- Support 8~768Kbps high bit rate format playback, with high fidelity sound effect
- GX-SP8021B-K, GX-SP8041B-K support PoE power supply, and can use Gigabit IEEE802.3bt PoE standard switch to supply power through Category 6 network cable, the line length is less than 80 meters
- Standard power adapter, support DC24V independent power supply
- An offline storage module is optional, and it can also realize timing playback and timing ringing even when it is disconnected from the network
- It supports remote server management and remote upgrade, which is convenient for users to maintain.

### Technical Parameters

Model	GX-SP8021A-K	GX-SP8041A-K	GX-SP8021B-K	GX-SP8041B-K
Unit	4" unit*2	4" unit*4	4" unit*2	4" unit*4
Power output	20W	40W	20W	40W
Network interface	RJ45*1, 100Mbps/10Mbps			
Bit rate	8k~768Kbps			
Sampling rate	8K~48K			
Frequency response	80Hz~16KHz			
Harmonic distortion	THD≤0.1%			
Signal to noise ratio	≥70dB			
Power supply	DC24V 2A		DC24V,POE(IEEE802.3bt)	
Product size	380x150x105mm	505x150x105mm	380x150x105mm	505x150x105mm
Product weight	1.97Kg	2.73Kg	2Kg	2.75Kg
Working temperature	-5 ~60			
Environmental humidity	20%~80% relative humidity			
Waterproof grade	IP66			

## Internet Radio Sound Column

GX-SP8022A-K/GX-SP8042A-K  
GX-SP8062A-K/GX-SP8082A-K



### Features

- The cabinet is made of thick aluminum alloy material, and the pure aluminum surface net is hardened and anti-oxidation treatment, which is durable and beautiful
- Based on TCP/IP, UDP, IGMP protocol, support LAN and WAN transmission, can be installed anywhere the network can reach, to achieve access and control of servers and other network equipment
- The built-in audio decoding module supports the conversion of network audio signals into analog stereo signal output, and realizes the playback of background music, emergency paging, and alarm signals from the server system
- Support 8~768Kbps high bit rate format playback, with high fidelity sound effect
- Use super-6 network cable transmission, the distance can be as far as 80 meters
- Standard power adapter, support DC24V independent power supply
- Optional offline storage module, can also realize timing play and timing ringing even when disconnected from the network
- It supports remote server management and remote upgrade, which is convenient for users to maintain

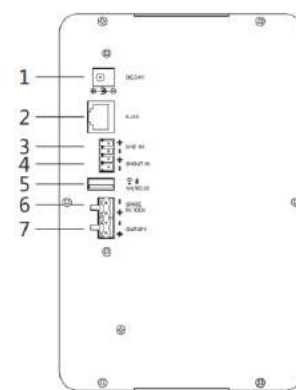
Model	GX-SP8022A-K	GX-SP8042A-K	GX-SP8062A-K	GX-SP8082A-K
Unit	5"full frequency*1, 1.5"treble*1	5"full frequency*2, 1.5"treble*1	5"full frequency*3, 1.5"treble*1	5"full frequency*4, 1.5"treble*1
Power output	20W	40W	60W	80W
Network interface	RJ45*1, 100Mbps/10Mbps			
Bit rate	8k~768Kbps			
Sampling rate	8K~48K			
Frequency response	80Hz—16KHz			
Harmonic distortion	THD≤0.1%			
Signal to noise ratio	≥70dB			
Input Power	AC220 V			
Protection circuit	overload, over temperature, short circuit protection			
Product size	520x227x125mm	520x227x125mm	920x227x125mm	1120x227x125mm
Working temperature	-5℃~60℃			
Environmental humidity	20%~80% relative humidity			
Waterproof grade	IP66			

## Internet radio speakers

**GX-SP8025B-K/GX-SP8025C-K**  
**GX-SP8025D-K/GX-SP8025E-K**

### Features

- The cabinet is made of thick fireproof ABS material, and the pure aluminum surface net is hardened and anti-oxidation treatment, which is durable and beautiful.
- Based on TCP/IP, UDP, IGMP protocol, support LAN and WAN transmission, can be installed anywhere the network can be reached, to achieve access and control of servers and other network equipment
- Through the Android or IOS sub-control software, the on-demand and paging functions can be controlled in real time;
- The built-in audio decoding module supports the conversion of network audio signals into analog stereo signal output, and realizes the playback of background music, emergency paging, alarm signals, etc. from the server system.
- Use super-6 network cable transmission, the distance can be as far as 80 meters
- Standard power adapter, support DC24V independent power supply
- GX-SP8025D-K, GX-SP8025E-K support IEEE802.3bt PoE standard Ethernet switch power supply
- Support 8~768Kbps high bit rate format playback, with high fidelity sound effect
- It has 1 line input, 1 microphone input, supports local audio source playback, and the microphone volume is independently adjustable.
- It has 1 line output to connect to the power amplifier for amplified sound output.
- With 1 custom short-circuit input and 1 short-circuit output.
- Built-in 2 \* 2.5 W stereo power amplifier, which can be used with 1 passive speaker
- It has a 100V constant voltage input interface, supports constant voltage backup function, and can build a dual backup broadcast system to meet important occasions such as school exams.
- With custom selection of audio source priority, support for local priority, network priority, and mixing output options
- An offline storage module can be selected, and it can also realize timing playback and timing ringing even when it is out of the network.
- An optional USB Bluetooth module can be used to push audio to the terminal for playback via mobile phone Bluetooth.
- Optional USB 2.4G wireless microphone module to meet the needs of local microphone amplification output.
- Support environmental monitoring function.
- Support remote server management and remote upgrade, which is convenient for users to maintain.
- The sound is clear and bright, wall-mounted installation, simple and convenient;
- Applicable to indoor places such as classrooms, shopping malls, corridors, etc.



**GX-SP8022B-K**

### Technical Parameters

Model	GX-SP8025B-K	GX-SP8025C-K	GX-SP8025D-K	GX-SP8025E-K
Color	White	White	White	White
Unit	6"full frequency*1, 1.5"high pitch*1			
Network interface	RJ45*1, 100Mbps/10Mbps			
Audio interface	AUX_IN*1, MIC_IN*1, LINE_OUT*1, SPK_OUT*1			
Constant pressure input interface	\	\	100V	100V
Other interfaces	USB (extended Bluetooth)*1, USB (extended 2.4G wireless microphone)*1, short-circuit input*1, short-circuit output*1			
Support protocol	TCP/IP, UDP, IGMP			
Audio format	MP3			
Audio mode	16-bit stereo CD sound quality			
Bit rate	8k~768Kbps			
AUX sensitivity	-12dB			
Short circuit input	0 V			
Frequency response	20Hz-20KHz			
Harmonic distortion	THD≤0.1%			
Signal to noise ratio	≥80dB			
Output power	2×20W			
Power consumption	<45W			
Protection circuit	overload, over temperature, short circuit protection			
Input power	DC24V		DC24V,POE(IEEE802.3bt)	
Product size	280*150*190mm			
Product weight	2.16KG	2.55KG	2.18KG	2.58KG
Working temperature	5°C~40°C			
Environmental humidity	20%~80% relative humidity			

## Internet Radio Speakers

### GX-SP8025A-K

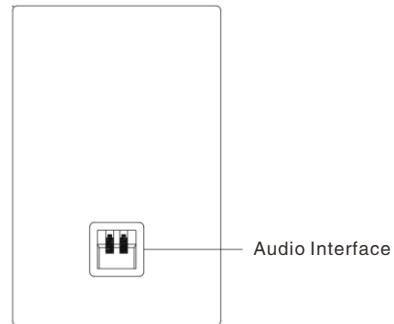
#### Features

- With SPK\_IN interface, connect to SPK\_OUT of GX-SP8025B-K, GX-SP8025C-K, GX-SP8025D-K, GX-SP8025E-K speakers
- The cabinet is made of wooden material, which is durable and beautiful
- The sound is clear and bright, wall-mounted installation, simple and convenient
- Suitable for indoor places such as classrooms, shopping malls, corridors, etc.



#### Technical Parameters

Model	GX-SP8025A-K
Color	White
Unit	4.5" Coaxial Unit×1
Unit power	20W
Audio interface	SPK_IN*1
Frequency response	20Hz~18KHz
Product size	280*150*190mm
Product weight	2Kg
Working temperature	5°C~40°C
Environmental humidity	20%~80% relative humidity



## Internet radio speakers

### GX-SP8027A-K

1. 24V DC power input, switching power supply
2. Power amplifier output interface, which can be connected to another speaker
3. Short circuit output
4. Audio input interface, which can be connected to MP3/DVD audio input
5. Audio output interface, which can be connected to power amplifier equipment
6. Network interface
7. Bluetooth interface



#### Features

- Using a 5-inch coaxial full-frequency unit, the sound is clear and loud.
- Ultra-narrow side and carbon alloy fine-hole aluminum mesh design, wide sound diffusion angle, stylish appearance.
- Equipped with a rear cover to achieve stronger low-frequency sound effects.
- Powerful movable clamp design, easy to install, durable and reliable.
- Based on TCP/IP, UDP, IGMP protocol, support LAN and WAN transmission, can be installed anywhere the network can be reached, to achieve access and control of servers and other network equipment
- It has 1 line input and supports local audio source playback.
- It has 1 channel of 20W speaker output, which can be extended to connect a 20W constant impedance speaker to realize power expansion
- With 1 short circuit input.
- The built-in audio decoding module supports the conversion of network audio signals into analog stereo signal output, and realizes the playback of background music, emergency paging, alarm signals, etc. from the server system.
- Support 8~768Kbps high bit rate format playback, with high fidelity sound effect
- Optional offline storage module, it can also realize timing play and timing ringing when disconnected from the network
- Support remote server management and remote upgrade, which is convenient for users to maintain.
- super-6 network cable transmission, the distance can be as far as 80 meters
- standard power adapter, support DC24V independent power supply

#### Technical Parameters

Model	GX-SP8027A-K
Power output	20W
Network interface	RJ45*1, 100Mbps/10Mbps
Audio interface	AUX_IN*1, LINE_OUT*1, SPK_OUT*1
Other interfaces	short-circuit input *1
Support protocol	ARP, UDP, TCP/IP, ICMP, IGMP (multicast)
Audio bit rate	8Kbps~320Kbps adaptive
Frequency response	20Hz~20KHz (±3dB)
Signal to noise ratio	≥75dB
Total harmonic distortion	≤1%
Power amplifier rated power	2*20W
Maximum power consumption	45W
Power supply	DC 24V/2A
Hole size	170mm in diameter
Product size	diameter 200mm*100mm
Product weight	1.53Kg

## Internet radio speakers

**GX-SP8027B-K**



1. 24V DC power input, switching power supply
2. Power amplifier output interface, which can be connected to another speaker
3. Short circuit output
4. Audio input interface, which can be connected to MP3/DVD audio input
5. Audio output interface, which can be connected to power amplifier equipment
6. Network interface
7. Bluetooth interface

### Features

- Use a 5-inch full-frequency unit, moderate volume, and support POE power supply.
- Ultra-narrow side and carbon alloy fine-hole aluminum mesh design, wide sound diffusion angle, stylish appearance.
- Equipped with a rear cover to achieve stronger low-frequency sound effects.
- Powerful movable clamp design, easy to install, durable and reliable.
- Based on TCP/IP, UDP, IGMP protocol, support LAN and WAN transmission, can be installed anywhere the network can be reached, to achieve access and control of servers and other network equipment
- It has 1 line input and supports local audio source playback.
- It has 1 4W speaker output, which can be extended to connect a 4W fixed impedance speaker
- With 1 short circuit input.
- The built-in audio decoding module supports the conversion of network audio signals into analog stereo signal output, and realizes the playback of background music, emergency paging, alarm signals, etc. from the server system.
- Support 8~768Kbps high bit rate format playback, with high fidelity sound effect
- Adopt IEEE802.3af POE standard, support POE power supply
- Support remote server management and remote upgrade, which is convenient for users to maintain.
- super-6 network cable transmission, the distance can be as far as 80 meters
- standard power adapter, support DC24V independent power supply

### Technical Parameters

Model	GX-SP8027B-K
Power output	8W (no speaker output connected), 4W (connected speaker output)
Network interface	RJ45*1, 100Mbps/10Mbps
Audio interface	AUX_IN*1, LINE_OUT*1, SPK_OUT*1
Other interfaces	short-circuit output *1
Support protocol	ARP, UDP, TCP/IP, ICMP, IGMP (multicast)
Audio bit rate	8Kbps~320Kbps adaptive
Frequency response	20Hz~20KHz (±3dB)
Signal to noise ratio	≥75dB
Total harmonic distortion	≤0.3%(@1W)
Power amplifier rated power	1*8W or 2*4W dual mode selection
POE standard	support IEEE802.3af
Power supply	DC 12V/1.5A or POE power supply
Hole size	diameter 160mm
Product size	diameter 200mm*100mm
Product weight	0.9Kg

## Internet radio horn speaker

**GX-SP8028A-K/GX-SP8028B-K**



### Features

- § Aluminum alloy material, beautiful and practical
- § A standard 10/100MRJ45 network interface supports LAN and WAN transmission
- § With 30W/50W integrated horn power amplifier
- § Using Category 6e network cable transmission, the distance can be as far as 80 meters
- § Standard power adapter, support DC24V independent power supply
- § Support mobile APP sub-control software such as Android phones, support WIFI real-time control on-demand, paging
- § Support server remote management, remote upgrade, easy to maintain

### Technical Parameters

Model	GX-SP8028A-K	GX-SP8028B-K
Output Power	30W	50W
Input Power	DC24V	
Network Interface	1*RJ45	
Transmission Rate	100Mbps/10Mbps	
Support Protocol	TCP/IP,UDP,IGMP(multicast)	
Audio Format	MP3	
Audio Mode	16-bit stereo CD sound quality	
Sample Rate	8K~48K	
Bit Rate	8K~768Kbps	
AUX Sensitivity	-12dB	
Microphone Sensitivity	-10dB	
Power consumption	< 60W	
Frequency Response	20Hz~20kHz	
Harmonic Distortion	THD≤0.1%	
Signal to Noise Ratio	≥70dB	
Protection Circuit	Overload, over temperature, short circuit protection	
Operating Temperature	5℃~40℃	
Operating Humidity	20%~80%relative humidity, no condensation	
Storage Temperature	20~30℃	
Storage Humidity	25%~50%	

## Internet Radio Intercom Terminal

GX-PB8221A-K/GX-PB8221B-K/GX-PB8221C-K



GX-PB8221A-K



GX-PB8221B-K



GX-PB8221C-K

### Features

- Use a 5-inch full-frequency unit, moderate volume, and support POE power supply.
- Ultra-narrow side and carbon alloy fine-hole aluminum mesh design, wide sound diffusion angle, stylish appearance.
- Equipped with a rear cover to achieve stronger low-frequency sound effects.
- Powerful movable clamp design, easy to install, durable and reliable.
- Based on TCP/IP, UDP, IGMP protocol, support LAN and WAN transmission, can be installed anywhere the network can be reached, to achieve access and control of servers and other network equipment
- It has 1 line input and supports local audio source playback.
- It has 1 4W speaker output, which can be extended to connect a 4W fixed impedance speaker
- With 1 short circuit input.
- The built-in audio decoding module supports the conversion of network audio signals into analog stereo signal output, and realizes the playback of background music, emergency paging, alarm signals, etc. from the server system.
- Support 8~768Kbps high bit rate format playback, with high fidelity sound effect
- Adopt IEEE802.3af POE standard, support POE power supply
- Support remote server management and remote upgrade, which is convenient for users to maintain.
- Super-6 network cable transmission, the distance can be as far as 80 meters
- Standard power adapter, support DC24V independent power supply

### Technical Parameters

Model	GX-PB8221A-K/GX-PB8221B-K/GX-PB8221C-K
Number of buttons	GX-PB8221A-K*1;GX-PB8221B-K*2;GX-PB8221C-K*16
Network interface	RJ45*1, 100Mbps/10Mbps
Audio interface	SPK_OUT(30W)*1, LINE_OUT*1, MIC_IN*1
Other interfaces	short-circuit input*2, short-circuit output*2
Support protocol	ARP, UDP, TCP/IP, ICMP, IGMP (multicast)
MIC sensitivity	10mV/600Ω
Sampling rate	8K~48KHz
Audio bit rate	8Kbps~320Kbps adaptive
Frequency response	20Hz~20KHz
Harmonic distortion	≤0.1%
Signal to noise ratio	≥80dB
Output power	30W/8Ω
Input power	DC24V/2A
Power	Standby <1W, maximum working power <50W
Protection level	Ip65
Product size	194x108x57mm
Product weight	1.3Kg
Working temperature	-20℃~+60℃
Environmental humidity	10%~90% RH (non-condensing)



## Internet Radio Intercom Terminal

**GX-PB8222A-K**

### Features

- Wall-mounted and embedded metal shell structure, which can be widely used in highway tunnels for emergency help
- Based on TCP/IP, UDP, IGMP protocol, support LAN and WAN transmission, can be installed anywhere the network can be reached, to achieve access and control of servers and other network equipment
- The built-in audio decoding module supports the conversion of network audio signals into analog stereo signal output, and realizes the playback of background music, emergency paging, alarm signals, etc. from the server system.
- With a help button, one-key connection to the designated intercom terminal for two-way intercom
- With 1 RJ45 network port, 1 optical fiber interface, suitable for long-distance occasions
- It has two 30W power amplifier output ports, which can be connected to 8 ohm 30W speakers for broadcast amplification
- It has a 1-channel monitor microphone interface, which can monitor the environment in real time/timing by accessing the monitor microphone
- With 1 short-circuit input and 1 short-circuit output interface, it supports linkage with other systems
- It has 1 alarm light to realize the sound and light linkage alarm
- It supports remote server management and remote upgrade, which is convenient for users to maintain.
- It has a 24V active pickup connection port, which can be used for monitor input expansion
- It has a mixed broadcast audio source output, which is used for broadcast amplification of an external power amplifier
- Support remote server management and remote upgrade, which is convenient for users to maintain.
- Super-6 network cable transmission, the distance can be as far as 80 meters
- Standard power adapter, support AC100~265V independent power supply



### Technical Parameters

Model	GX-PB8222A-K
Network interface	RJ45*1, 100Mbps/10Mbps
Audio interface	SPK_OUT(30W)*2
Other interfaces	short-circuit input*1, short-circuit output*1
Support protocol	ARP, UDP, TCP/IP, ICMP, IGMP (multicast)
Audio encoding	PCM/ADPCM/G711
Recording sampling rate	8K~48KHz
Play sampling rate	8K~48KHz
Intercom sampling rate	16KHz
Audio bit rate	8k~320Kbps (intercom 64Kbps)
Frequency response	200Hz~5000Hz (intercom), 100Hz~16KHz (broadcast)
Harmonic distortion	THD≤1%
Signal-to-noise ratio	>65dB (intercom), >80dB (broadcast)
Output power	30W
Input power	AC100~265V
Protection level	Ip65
Intercom delay	<100mS
Mean time between failures (MTBF)	≥500,000 hours
Product size	400*290*86mm(not counting the size of warning lights and waterproof connectors)
Product weight	5.5Kg-
Working temperature	40°C~70°C
Storage temperature	-40~85°C
Environmental humidity	10~95% RH (non-condensing)
Storage humidity	5~90% RH (non-condensing)

## Internet Radio Intercom Terminal

GX-PB8224A-K



### Features

- Explosion-proof and fire-proof design, which can be widely used in dial-up intercom communication and emergency broadcasting in industrial and mining enterprises and in relatively harsh environments
- Based on TCP/IP, UDP, IGMP protocol, support LAN and WAN transmission, can be installed anywhere the network can reach, to achieve access and control of servers and other network equipment
- The built-in audio decoding module supports the conversion of network audio signals into analog stereo signal output, and realizes the playback of background music, emergency paging, and alarm signals from the server system.
- With 15 input buttons, which can be used for two-way intercom dialing and one-key help
- Built-in 5W speaker and high-sensitivity microphone, support two-way intercom with other intercom terminals
- With 1 short-circuit input and 1 short-circuit output interface, it supports linkage with other systems
- It has a 24V alarm lamp output interface, which can be connected to the alarm lamp to realize the sound and light linkage alarm
- It has a 30W power amplifier output port, which can be connected to 8 ohm 30W speakers for broadcast amplification
- Support remote server management and remote upgrade, which is convenient for users to maintain.
- Super-6 network cable transmission, the distance can be as far as 80 meters
- Standard power adapter, support DC220V independent power supply

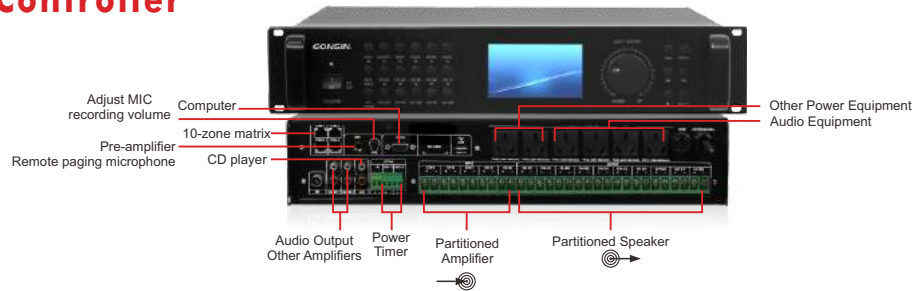
### Technical Parameters

Model	GX-PB8224A-K
Network interface	RJ45*1, 100Mbps/10Mbps
Audio interface	SPK_OUT(30W)*1
Other interfaces	short-circuit input*1, short-circuit output*1, 24V warning light output*1
Support protocol	ARP, UDP, TCP/IP, ICMP, IGMP (multicast)
Audio format	Mp3
Sampling rate	8K~48KHz
Bit rate	8Kbps~320Kbps adaptive
Short circuit input/output	0 V
Frequency response	100Hz - 18KHz
Harmonic distortion	THD≤1%
Signal-to-noise ratio	≥70dB
Output power	30W
Standby power consumption	<5W
Maximum power consumption	<50W
Input power	AC220V/50Hz
Protection level	Ip65
Product size	320×310×130 (mm)
Product weight	5.2Kg
Working temperature	-20℃~+60℃
Environmental humidity	5%~90% relative humidity

# Analog Broadcasting System

## Program Zone Controller

**GX-PB1421**



### Features

- § Standard 2U chassis, aluminum alloy panel, with handle design, convenient and beautiful
- § With complete public address function and humanized intelligent control function, integrated music playback, intelligent timing control, partition control, intelligent fire linkage, power control, power
- § Brain programming control, recording and other functions
- § With 4.3-inch TFT display screen, graphical interface, intuitive operation
- § Support computer online editing timing program, fully automatic power supply, broadcast partition management, convenient and fast
- § There are 4 sets of general timing task schemes, 4 sets of rainy day timing task schemes and 6 sets of special timing task schemes, each timing scheme is more than 200 timing points; the general timing task scheme
- § According to the 7-day cycle, the special scheduled task plan is executed on a specific date; to meet the needs of various times and occasions
- § With 1 AUX common input
- § With 1 fire emergency input (0V signal), 2 dry contact outputs (0V signal)
- § With 5-way power signal input, connected to the power amplifier; 10 partition power signal output, connected to the speaker; each power input is divided into 2 partition outputs
- § 6-way controllable power output
- § Built-in MP3, FM radio, support timing, fixed point, fixed song
- § Built-in 2GB memory, SD card can be expanded externally, support MIC recording, LINE IN recording, FM recording
- § playback memory or SD card program, with decoding music
- § Support wireless remote control within a range of 1000 meters, and can freely customize button functions, such as opening/closing partitions, power supply, playing songs, etc.
- § Support fire linkage function, alarm trigger signal input to play specified music files
- § Support audio formats: MP3, WMA, AAC, WAV, OGG and other audio formats
- § With high-precision RTC clock, support timing can be accurate to seconds and clock synchronization function

### Technical Parameters

Model	GX-PB1421
Storage method	Built-in 2G memory or external SD card
Support audio format	MP3, WMA, AAC, WAV, APE, FLAC
Receiving method	FM 88-108MHz
Recording input amplitude	MIC 5mV, LINE 500mV
Output	LINE 500mV Unbalanced
SNR of whole machine	≥85dB
Overall distortion	<0.1%(1kHz)
Frequency Response	20Hz~20kHz±3dB
Partition Output	8 channels, total maximum capacity 3200W
Power Supply	AC220V/50Hz, 110V can be customized
Power	≤10W
Time System	24 hours system
Net weight	5.45kg
Gross weight	6.65kg
Product size	484×350×88mm
Package size	540×430×170mm
Working temperature	-5℃~80℃
Working Humidity	20%~80% relative humidity
Storage Temperature	20~30℃
Storage Humidity	25%~50%

## Remote Control

**GX-PB1415**

- § Remote Control GX-PB1415
- § With the program partition controller (GX-PB1421) and audio matrix controller (GX-PB1422), to achieve remote control
- § Elegant Design, User-Friendly Operation
- § Extremely Long Remote Control Range, Over 500 Meters (Unobstructed)
- § Equipped with 12 Quick Access Buttons for Music Playback, Zone Control, and Custom Key Functions
- § Function keys allow for Pause/Resume, Stop, Previous Track, Next Track, Music Selection,



# Audio Matrix Controller

**GX-PB1422**

## Features

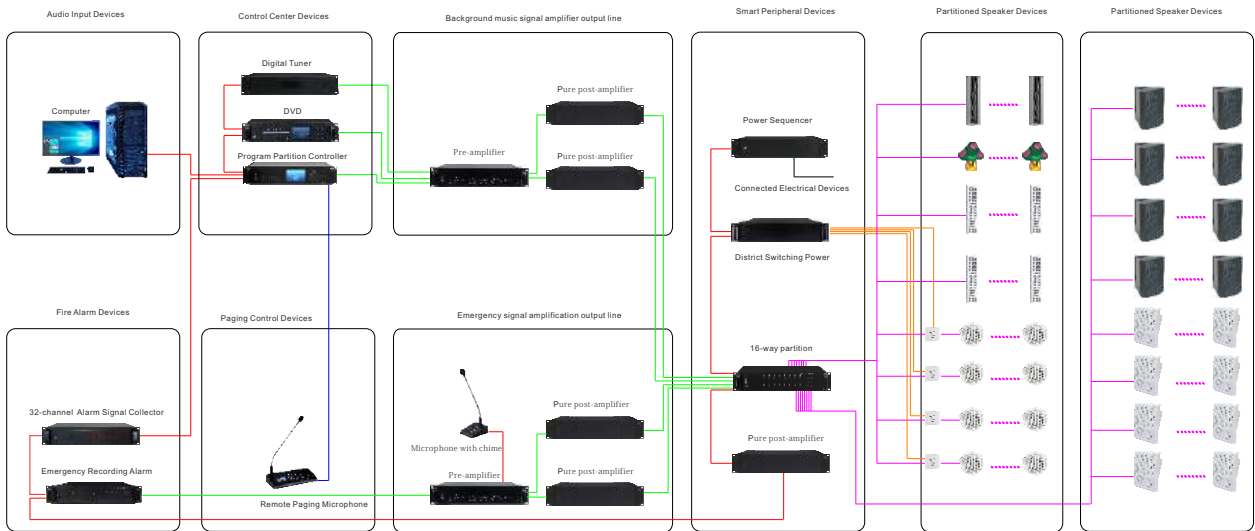
- § Standard 2U chassis, aluminum alloy panel, with handle design, convenient and beautiful
- § It has complete public address function and humanized intelligent control function, integrating music playback, intelligent timing control, audio matrix, intelligent fire linkage, power control, computer programming control, recording and other functions
- § With 4.3-inch TFT display screen, graphical interface, intuitive operation
- § Support computer online editing timing program, fully automatic power supply, audio matrix management, convenient and fast
- § There are 4 sets of general timing task schemes and 6 sets of special timing task schemes, and each set of timing schemes has more
- § Up to 256 timing points, the general timing task scheme is cycled in 7 days, and the special timing task scheme is executed on a specific date to meet the needs of various times and occasions
- § It has 6 channels of sound source + 1 channel of fire source audio input, and the input signal has independent volume adjustment, which can be applied to different audio source equipment
- § With 32 channels of audio output, each output interface corresponds to a partition, connected to the partition power amplifier, each partition can play different programs at the same time and individual paging, realize the independent audio source playback of each partition, without interfering with each other
- § Built-in powerful and flexible audio matrix, which can switch modes manually or automatically;
- § With 16 channels of fire emergency input (short circuit signal), 1 channel of extended synchronous power supply (short circuit signal) output, 4 channels of programmable power output
- § Support fire linkage function, alarm trigger signal input to play specified music files
- § It has multi-mode fire alarm function, including independent alarm for the whole area, independent alarm for partitions, adjacent (1.2.3.4) partitions and other alarm modes, which can be flexibly configured through computer software
- § Supports local and remote broadcast paging functions, and can flexibly realize whole-region, partition and remote remote broadcast paging
- § Built-in programmable MP3, FM radio, support timing, fixed point, fixed song, play memory or SD card program
- § With decoding music playback function, the sound quality is comparable to that of professional CD, and supports MPEG 1/2 Layer 3, WMA, WAV, OGG and other audio formats
- § Built-in 2GB memory, SD card can be expanded externally, support MIC recording, LINE IN recording, FM recording
- § Supports external control of various audio source devices, and realizes playing corresponding programs (music) at specified times and locations (regions)



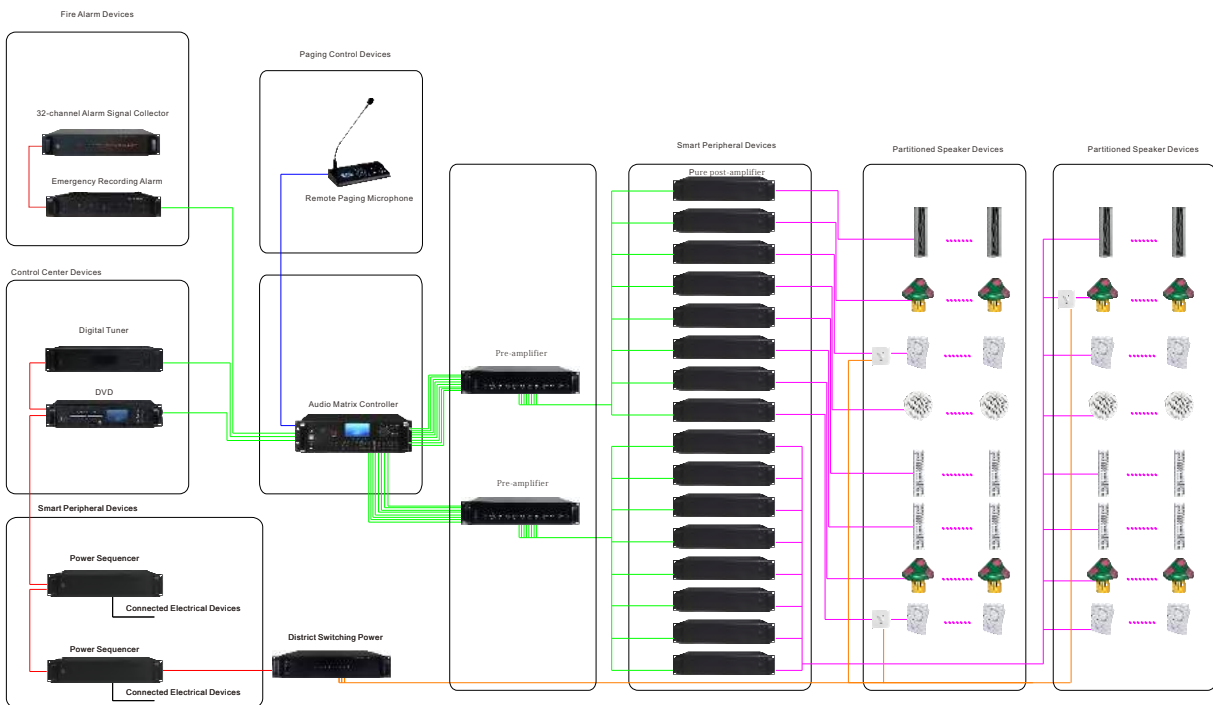
## Technical Parameters

Model	GX-PB1422
Storage method	Built-in 2G memory or external SD card
Support audio format	MP3, WMA, AAC, WAV, APE, FLAC
Receiving method	FM 88~108MHz
Recording input amplitude	MIC 5mV, LINE 500mV
Output	LINE 500mV Unbalanced
SNR of whole machine	≥85dB
Overall distortion	<0.1%(1kHz)
Frequency Response	20Hz~20kHz±3dB
Partition Output	32 channels audio output, 6 channels external audio input, 2 channels built-in audio source, total 8 channels audio source
Power Supply	AC220V/50Hz, can be customized 110V
Power	Audio switching, without power
Net weight	6.2kg
Gross Weight	8.65kg
Product Size	485×350×130mm
Package Size	540×430×230mm
Working temperature	-5°C~80°C
Working Humidity	20%~80% relative humidity
Storage Temperature	20~30°C
Storage Humidity	25%~50%

### Program Partition Controller GX-PB1421 Diagram



### Audio Matrix Controller GX-PB1422 Diagram



## 6-zone Pre-amplifier

**GX-PA6001/PA6002/PA6003/PA6004/PA6005/PA6006**



### Features

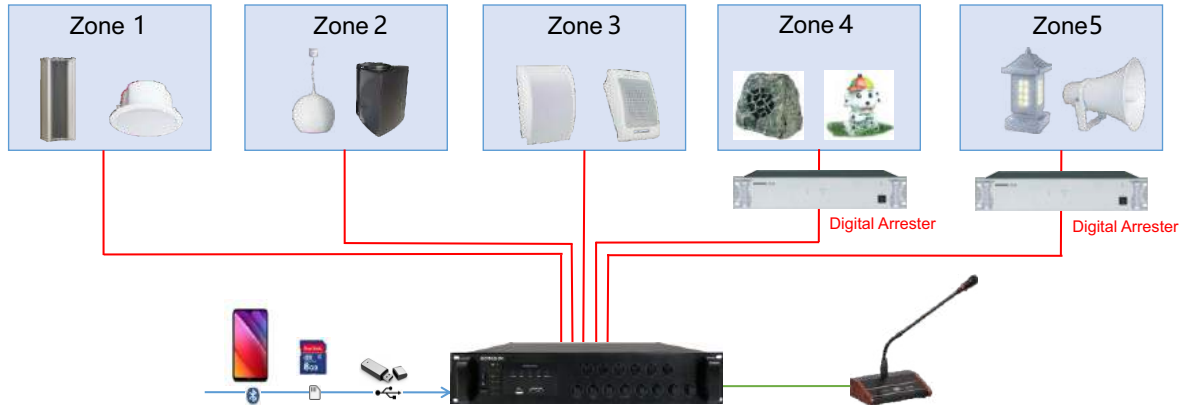
- Standard 2U chassis, aluminum alloy panel, handle design, convenient and beautiful
- Single machine is a small broadcast system
- Support 6 partitions with independent fixed voltage output, each partition volume can be controlled separately
- With 1-channel emergency (EMC) input, emergency EMC input has the highest priority level, with independent volume adjustment
- With 2-channel microphone input, of which MIC1 has the highest priority level, the volume of each channel can be adjusted independently
- With 2-way auxiliary (AUX) line input, can be connected to the audio signal, and built-in Bluetooth / MP3 channel volume unified adjustment
- With 1 auxiliary line output, support the expansion of the connection amplifier
- Built-in Bluetooth / MP3 function module, support cell phone Bluetooth push program playback, support the connection of U disk, SD card playback audio files, support MP3 / WAV music playback format
- With independent adjustment of treble and bass
- Support abnormal work protection warning function, when the input signal is too large, the load is too heavy, the temperature is too high, the line short circuit, the corresponding indicator prompts, with extremely high reliability
- With power, signal, peak-shaving, protection LED a variety of status indicators
- With input power fluctuation protection function, support over-voltage protection, under-voltage protection
- Adopt fan forced cooling structure, support long time stable work

### Technical Parameters

Model	GX-PA6001	GX-PA6002	GX-PA6003	GX-PA6004	GX-PA6005	GX-PA6006
Power Output	60W	120W	240W	360W	500W	650W
AUX Sensitivity	-12dB					
Microphone Sensitivity	-40dB					
Bass	± 10dB					
Frequency Response	80Hz~16kHz ± 2dB					
Harmonic Distortion	THD ≤ 0.1%					
Signal to Noise Ratio	≥ 70dB					
Line Output	0dB					
Power Supply	AC220V/50Hz					
Product Size	483 × 342 × 90mm				483 × 410 × 90mm	
Package Size	540 × 430 × 170mm				540 × 490 × 170mm	
Net Weight	7.8kg	9.3kg	11.2kg	12.6kg	15.8kg	17.1kg
Gross Weight	9.1kg	10.6kg	12.4kg	13.9kg	17.2kg	18.7kg
Working Temperature	-5~80℃					
Working Humidity	20%~80% relative humidity, no condensation					
Storage Temperature	20~30℃					
Storage Humidity	25%~50%					

## 6-zone Pre-amplifier Diagram

GX-PA6001/PA6002/PA6003/PA6004/PA6005/PA6006



60/120/240/360/500/650W

All zones play the same background music and support full zone paging

## Power Amplifier

GX-PA6011/GX-PA6012/GX-PA6013/GX-PA6014  
GX-PA6015/GX-PA6016/GX-PA6017



### Features

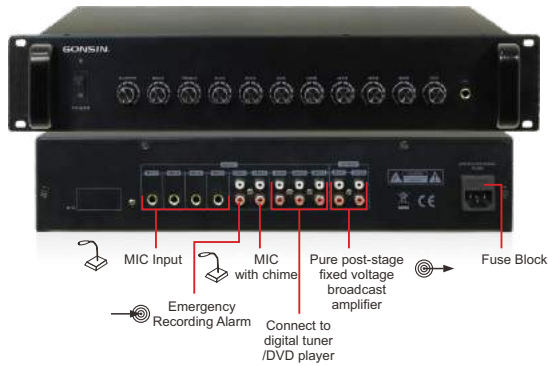
- Standard 2U chassis, aluminum alloy panel, handle design, convenient and beautiful
- Class D power amplifier circuit is adopted, which has high efficiency, energy saving, light weight and small size.
- Small size, high power, strong load capacity, etc.
- With 1 balanced XLR input and 1 unbalanced RCA input
- With 1 balanced XLR output and 1 unbalanced RCA output, it is convenient to cascade to the next power amplifier
- Adopt 100V constant voltage output mode, connect constant voltage speaker to use
- Support volume adjustment function
- With short circuit, overheating, overload protection function
- It has the function of line limiting to prevent the speaker from being damaged by the excessive output of the power amplifier
- With power, signal, peak clipping, protection LED multiple status indicators
- With input power fluctuation protection function, support over-voltage protection, under-voltage protection
- Adopt fan forced heat dissipation structure, support long-term stable work

### Technical Parameters

Model	GX-PA6011	GX-PA6012	GX-PA6013	GX-PA6014	GX-PA6015	GX-PA6016	GX-PA6017
Power output	360W	500W	800W	1000W	1200W	1500W	2000W
Sensitivity	0dB						
Efficiency	>90%						
Frequency response	20~20kHz						
Harmonic distortion	THD≤1% (1/8 rated power)						
Signal-to-noise ratio	> 85dB						
Constant voltage output	100V±5%						
Power supply	AC220V 110V can be customized						
Product size	483×342×90mm						
Package size	540×430×170mm						
Net Weight	4.9kg	5kg	5kg	6.05kg	6.05kg	6.05kg	6.1kg
Gross weight	6.2kg	6.4kg	6.4kg	7.5kg	7.5kg	7.5kg	7.5kg
Working temperature	-5~80						
Working humidity	20%~80%relative humidity, no condensation						
Storage temperature	20~30%						
Storage humidity	25%~50%						

## Pre-amplifier

### GX-PB1401



### Features

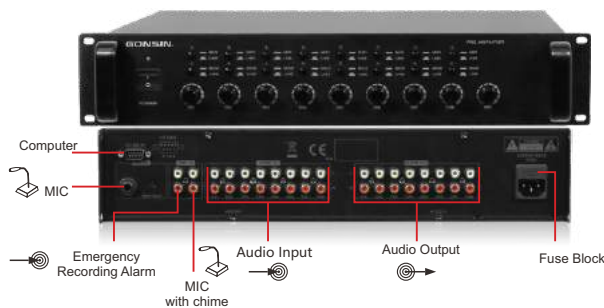
- Standard 2U chassis, aluminum alloy panel, with handle design, convenient and beautiful
- With 5-way microphone input, 3-way line input, 2-way emergency line input, 2-way line input
- Microphone 1 and emergency line have the highest priority, forced cut-in priority function. (MIC2, 3, 4, 5) and line (AUX1, 2, 3) at the same level
- Support microphone and line volume independently adjustable
- With independent adjustment of treble and bass

### Technical Parameters

Model	GX-PB1401
MIC Sensitivity	-40dB
AUX Sensitivity	-12dB
Line Output	0dB
Frequency Response	20Hz~20kHz(±3dB).
Signal to Noise Ratio	≥75dB
Harmonic Distortion	≤1%
Power Consumption	<30W
Power Supply	AC220V/3A, 110V can be customized
Net Weight	5.4kg
Gross weight	6.85kg
Product Size	483×342×90mm
Package Size	540×430×170mm
Working Temperature	-5~80°C
Working Humidity	20%~80% relative humidity
Storage Temperature	20~30°C
Storage Humidity	25%~50%

## Pre-amplifier

### GX-PB1411



### Features

- Standard 2U chassis, aluminum alloy panel, with handle design, convenient and beautiful
- It has 8 independent input lines, 2 microphone input lines, independent volume adjustment for each line, and 8 output groups can be selected arbitrarily
- With 8-way array output and 2-way microphone input, any combination of 2-way line input can be used for paging
- Microphone 1 input has the highest priority, forced cut-in priority function, when there is emergency audio
- There is an automatic cut-in priority function when the signal is input
- 2-way emergency signal input with second-level priority, no volume adjustment, automatic mute to -30dB, 2-way line input can choose priority mode and mixing mode
- With dial switch adjustment, free to choose various combined audio modes

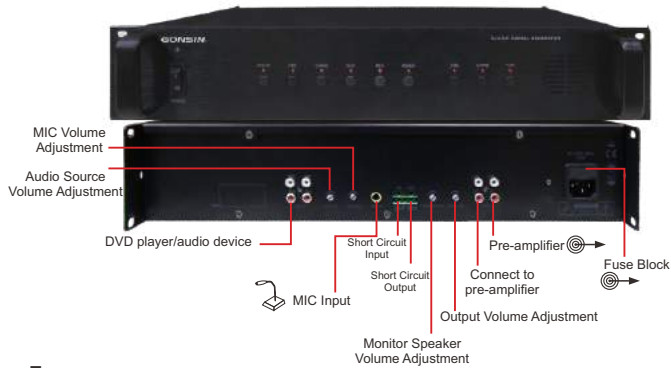
### Technical Parameters

Model	GX-PB1411
MIC Sensitivity	-40dB
AUX Sensitivity	-12dB
Line Output	0dB
Frequency Response	20Hz~20kHz(±3dB).
Signal to Noise Ratio	≥75dB
Harmonic Distortion	≤1%
Power Consumption	<30W
Power Supply	AC220V/3A, 110V can be customized
Net Weight	5.4kg
Gross weight	6.4kg
Product Size	483 × 342 × 90mm
Package Size	540 × 430 × 170mm
Working Temperature	-5~80°C
Working Humidity	20%~80% relative humidity
Storage Temperature	20~30°C
Storage Humidity	25%~50%



## Recording Alarm Generator

**GX-PB1402**



### Features

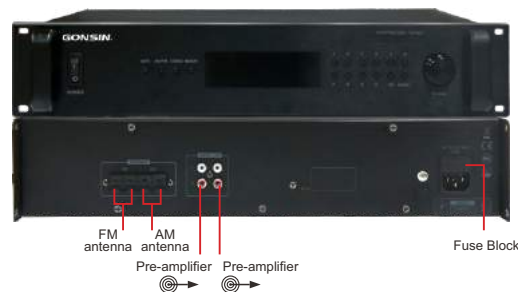
- Standard 2U chassis, aluminum alloy panel, with handle design, convenient and beautiful
- 1-way short-circuit input, 1-way short-circuit output function, support manual and automatic playback
- 2 line outputs
- Built-in 1 channel of fire alarm, 1 channel of bell prompt tone, 1 channel of emergency evacuation crowd prompt tone
- Support MIC and line recording function, up to 60 seconds
- Built-in 2W monitor speaker function

### Technical Parameters

Model	GX-PB1402
Frequency Response	20Hz~20kHz(±3dB)
Signal-to-noise ratio	≥75dB
Short circuit Input	0V
Harmonic Distortion	≤1%
Power Consumption	<40W
Power Supply	AC220V, 110V can be customized
Net Weight	5.9kg
Gross Weight	7.2kg
Product Size	483×342×90mm
Package Size	540×430×170mm
Working Temperature	-5°C~80°C
Working Humidity	20%~80% relative humidity
Storage Temperature	20~30°C

## Digital Tuner

**GX-PB1403**



### Features

- Standard 2U chassis, aluminum alloy panel, with handle design, convenient and beautiful
- With RS485 communication interface, support broadcast control host control
- With 1 set of AM receiving antenna input, 1 set of FM receiving antenna 70Ω input
- With 2 channels of audio signal left and right channel output
- Quartz phase-locked loop frequency synthesizer-type adjustment loop is adopted, and the receiving frequency is accurate and stable
- Built-in high-brightness dynamic VFD fluorescent display, clear and eye-catching; support FM, AM (FM/AM) stereo two-band receiving selection, radio frequency memory can store up to 80
- Support light touch button operation, can directly input the frequency radio station to play
- Support 485 communication interface, support broadcast control host control
- Support radio frequency self-search storage and power-off memory function

### Technical Parameters

Model	GX-PB1403
Frequency Response	20Hz~20kHz(±3dB).
Signal-to-noise ratio	≥75dB.
Harmonic Distortion	≤1%.
Power Consumption	<40W
Power Supply	AC220V/3A, 110V can be customized
Net Weight	5.3kg
Gross Weight	6.6kg
Product Size	483×342×90mm
Package Size	540×430×170mm
Working Temperature	-5°C~80°C
Working Humidity	20%~80% relative humidity
Storage Temperature	20~30°C
Storage Humidity	25%~50%

## DVD Player

**GX-PB1404**



### Features

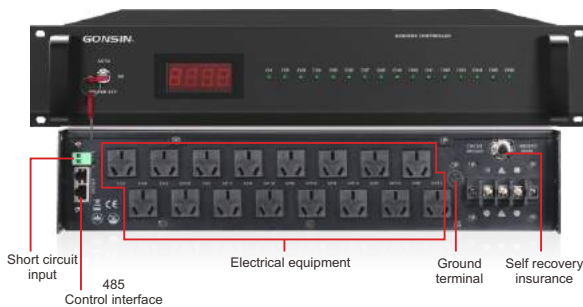
- ▣ Standard 2U chassis, aluminum alloy panel, with handle design, convenient and beautiful
- ▣ Imported digital movement, with super electronic anti-shock function, support CD, VCD, DVD disc playback, support MP3 format audio files
- ▣ Support external U disk, SD card, support MP3 format audio files
- ▣ Built-in high-brightness dynamic VFD fluorescent display, the machine running status is clear
- ▣ Support light touch button operation, can choose single play, all play, single cycle, all cycle, stop playing and other functions
- ▣ With 2 channels of audio signal left and right channel output
- ▣ With RS485 communication interface, support broadcast control host control, support programming
- ▣ Program timing control, realize timing automatic selection of audio source to play

### Technical Parameters

Model	GX-PB1404
Frequency Response	20Hz~20kHz (±3dB)
Signal to Noise Ratio	≥75dB
Harmonic Distortion	≤1%
Output Amplitude	≥500mV
Format	Compatible with VCD, SVCD, DVD, GAME, MP3, MP4, JPEG, HDCD, CDDA, WMA, CD-G, DVD-R DVD-RW DVD+RW, HDVD, CD, FLV
Power Consumption	40W
Power Supply	AC220V/3A, 110V can be customized
Net Weight	4.25kg
Gross Weight	5.25kg
Product Size	483×342×90mm
Package Size	540×430×170mm
Working Temperature	-5°C~80°C
Working Humidity	20%~80% relative humidity

## Power Supply Sequencer

**GX-PB1406**



### Features

- ▣ Standard 2U chassis, aluminum alloy panel, with handle design, convenient and beautiful
- ▣ Support 220V/6000W maximum power input, with input voltage display screen, which can monitor the grid voltage intuitively
- ▣ Support 16-way power output, using national standard power interface, each interface can withstand 220V/3000W power output
- ▣ With RS485 communication interface and the use of digital technology, it supports the connection with the intelligent host and accepts the control, so as to realize the automatic switch control of the power supply
- ▣ With 1 emergency interface input, it can automatically turn on each power supply in sequence when short circuit occurs, and automatically turn off the power supply in sequence after the short circuit is eliminated
- ▣ Equipped with electronic lock switch, manual and automatic modes, which can realize manual emergency control
- ▣ With 16 LED indicators, the channel status is clear

### Technical Parameters

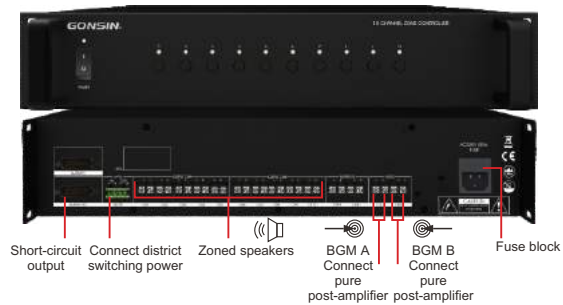
Model	GX-PB1406
Controlled power supply quantity	16 way
Single circuit capacity	3KVA
Capacity of the whole machine	6KVA
Action time interval	0.4S~0.5S
Communication method	RS485
Control mode	Controlled/hand control
Protection	ACFUSE(0.5A)×2
Power consumption	50W
Power supply	AC220V ~ 240V/50 ~ 60Hz, 110V can be customized
Net weight	6.75kg
Gross weight	7.95kg
Product size	483×342×90mm
Package size	540×430×170mm
Working temperature	-5°C~80°C
Working humidity	20%~80% relative humidity
Storage temperature	20~30°C
Storage humidity	25%~50%

## 10-zone Matrix

### GX-PB1407

#### Features

- Standard 2U chassis, aluminum alloy panel, with handle design, convenient and beautiful
- With 10 independent partition selection switches, partitions can be switched at will without interfering with each other
- Support 2-channel background music amplifier input, 2-channel emergency call amplifier input, 10-channel group output, the maximum output power of each group is AC220V 2000W, and the maximum output power of each zone is AC220V 600W
- The partitions are managed by 2 groups, the power amplifiers of group A control the group output of zones 1~5, and the power amplifiers of group B control the group output of zones 6~10
- AB input terminals can be connected in parallel to control the group output of zones 1 to 10
- 10 partitions have independent status indicators, the green light is for background music programs, and the red light is for emergency priority
- It has 2 kinds of short-circuit control signal input, receives the fire emergency signal from the superior, supports the connection of timer and intelligent controller, supports the triggering of the whole area or independent triggering of each partition, and realizes automatic control
- It has 2 kinds of short-circuit control signal output, which can be connected to strong power supply, and supports short-circuit signal output of the whole area or independent short-circuit signal output of each partition
- Adopt dual relay simultaneous double-cut control circuit, channel-to-channel isolation  $\geq 80\text{dB}$ , solve problems such as crosstalk between channels



#### Technical Parameters

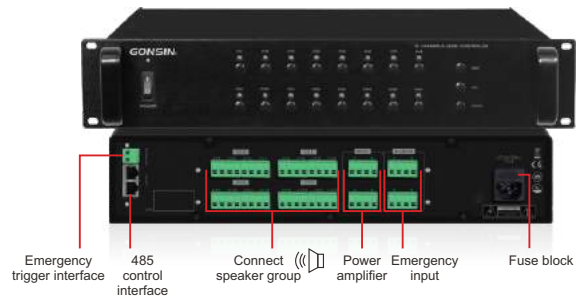
Model	GX-PB1407
Input Way	2-way background music, 2-way emergency call
Output Way	10-way output, group A CH1~CH5, group B CH6~CH10
Control Mode	Short circuit signal control, manual control
Power Input	AC220V~ 240V/50~ 60Hz, 110V can be customized
Power Consumption	15W
Net Weight	6.25kg
Gross Weight	7.6kg
Product Size	483×342×90mm
Package Size	540×430×170mm
Working Temperature	-5°C~80°C
Working Humidity	20%~80% relative humidity
Storage Temperature	20~30°C
Storage Humidity	25%~50%

## 16-way Partitioner

### GX-PB1417

#### Features

- Standard 2U chassis, aluminum alloy panel, with handle design, convenient and beautiful
- With 16 independent partition selection switches, partitions can be switched at will without interfering with each other
- Support 4-channel background music amplifier input, 4-channel emergency call amplifier input, 10-channel group output, the maximum output power of each group is 2000W, and the maximum output power of each partition is 600W
- The partitions are managed by 4 groups, the power amplifiers of group A control the group output of zones 1~4, and the power amplifiers of group B
- Control group output of zones 5~8, group C power amplifier controls group output of zone 9~13, power amplifier of group D controls group output of zone 14~16
- AB input terminals can be connected in parallel to control the group output of zones 1 to 10
- 16 partitions have independent status indicator lights, the green light is for background music programs, and the red light is for emergency priority
- It has a short-circuit control signal input, receives the fire emergency signal from the superior, and supports
- Timer, intelligent controller connection, support the triggering of the whole area, and realize automatic control
- Adopt dual relay simultaneous double-cut control circuit, channel-to-channel isolation  $\geq 80\text{dB}$ , solve problems such as crosstalk between channels
- Equipped with 485 communication interface, support broadcast host control

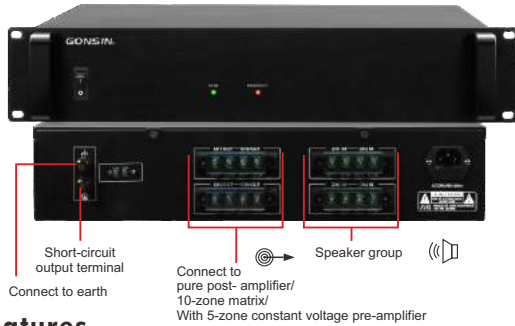


#### Technical Parameters

Model	GX-PB1417
Input Channel	4-channel background music 4-channel emergency call
Output Channel	16-channel output Group A CH1~CH4, Group B CH5~CH8 Group C CH9~CH12, Group C CH13~CH16
Control Mode	RS485 control, short-circuit signal control, manual control
Power Supply	AC220V~ 240V/50~ 60Hz, 110V can be customized
Power Consumption	15W
Net Weight	6.25kg
Gross Weight	7.6kg
Product Size	483×342×90mm
Package Size	540×430×170mm
Working Temperature	-5°C~80°C
Working Humidity	20%~80% relative humidity
Storage Temperature	20~30°C
Storage Humidity	25%~50%

## Digital Arrester

**GX-PB1408**



### Features

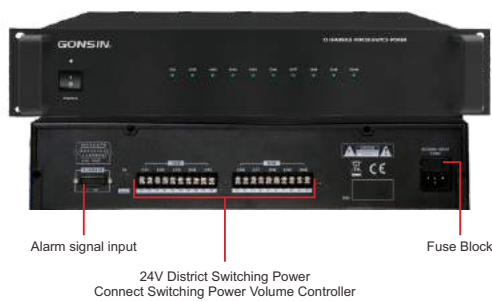
- ▣ Standard 2 U chassis, aluminum alloy panel, with handle design, convenient and beautiful
- ▣ With lightning protection, overvoltage protection and leakage protection for connected speakers
- ▣ Automatically cut off the output when lightning strikes to protect the subsequent equipment
- ▣ With 4 sets of independent input connection power amplifier
- ▣ With 4 sets of independent outputs to connect speaker groups
- ▣ 1 set of grounding lines connected to other equipment shells
- ▣ 1 set of grounding line output is connected to the earth, and the lightning is automatically introduced into the earth
- ▣ 1 channel alarm output 0 V (short circuit)

### Technical Parameters

Model	GX-PB1408
Number of channels	Four groups (CH1 ~ CH4 )
Input capacity	70/100V,10A,audio signal per channel
Output capacity	70/100V,10A,audio signal per channel
Continuous operation voltage	240V(RMS)
Protection voltage	280V(RMS)
2ms square wave through-current capacity	Current peak: 50A
Short-circuit output level	(0V) short-circuit signal
Power supply	AC 220V±10% 50~60Hz, 110V can be customized
Power consumption	Less than 25W
Net weight	7.6kg
Gross weight	8.85kg
Product size	483×350×90mm
Package size	540×430×170mm
Working temperature	-5°C~80°C
Working humidity	20%~80% relative humidity
Storage temperature	20~30°C
Storage humidity	25%~50%

## District Switching Power

**GX-PB1409**



### Features

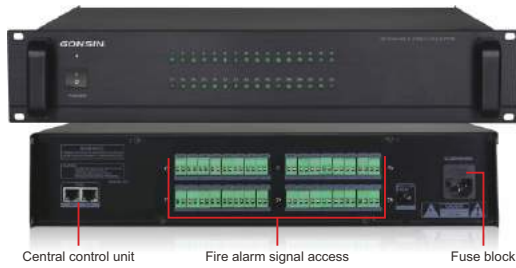
- ▣ Standard 2U chassis, aluminum alloy panel, with handle design, convenient and beautiful
- ▣ With 10 independent inputs for short-circuit trigger signals, it can receive network broadcast alarm host or partition matrix and other broadcast master control equipment connection
- ▣ It has 10 channels of DC24V/200W power output, and each channel does not interfere with each other. It is connected to the push-in volume controller and drives the push-in mechanism to switch
- ▣ With output indicators of each channel, the working status of the system is clear

### Technical Parameters

Model	GX-PB1409
Output	DC24V×1A/channel
Output channel	10-channel
Input method	Short circuit input
Power consumption	10~ 15W
Power supply	AC220V/5A, 110V can be customized
Net weight	6.1kg
Gross weight	7.4kg
Product size	483×342×90mm
Package size	540×430×170mm
Working temperature	-5°C~80°C
Working humidity	20%~80% relative humidity
Storage temperature	20~30°C
Storage humidity	25%~50%

## 32-channel Smart Alarm Signal Collector

**GX-PB1412**



### Features

- Standard 2 U chassis, aluminum alloy panel, with handle design, convenient and beautiful
- Support 32-way fire alarm signal access, support short-circuit 0V, 12V-24V signal trigger mode
- Support multi-computer cascade, up to 128 channels of fire signals can be collected
- With 2-way short-circuit signal output
- With RS485 communication interface, it supports connection with intelligent host, and can realize the whole area or N . . . N±1 . . . N±5 adjacent layer alarm, when there is an alarm signal triggering the alarm interface, automatically turn on the system, and realize the fire voice emergency broadcast to the corresponding area
- The panel is equipped with 32-way level indicators to show the working status; the system supports continuous alarm, that is, when there is a signal in the alarm, such as the second and third alarm signals then come in, the system will expand the alarm according to the corresponding area

### Technical Parameters

Model	GX-PB1412
Display method	LED
Acquisition channel	32-way
Alarm trigger mode	Short circuit, DC12V~24V
Online mode	RS485
Control mode	Auto/Manual
Rated power	8W
Maximum input power	10 W
Power supply	AC220V 50Hz, 110V can be customized
Net weight	5.1Kg
Gross weight	6.4Kg
Product size	483×350×90mm
Package size	540×430×170mm
Working temperature	-5°C ~ 80°C
Working humidity	20% ~ 80% relative humidity
Storage temperature	20 ~ 30°C
Storage humidity	25% ~ 50%

## Amplifier Switchover (4 main amplifiers & 1 standby amplifier)

**GX-PB1413**



### Features

- Standard 2U chassis, aluminum alloy panel, with handle design, convenient and beautiful
- With 4 channels of audio signal input
- There are 4 channels of audio signal output connected to the main power amplifier, and 1 channel of spare audio output connected to the spare power amplifier
- There are 4 channels of main power amplifier speaker signal input, and 1 channel of backup power amplifier speaker signal input
- With 4-way speaker signal output, connect broadcast speakers or dividers
- Support automatic power amplifier failure detection function, when the main power amplifier fails, it will automatically switch to the backup power amplifier
- amplifier output, when the main amplifier returns to normal, the system automatically switches back to the main amplifier output
- The panel has indicator lights for each channel. When the indicator light is on, the main power amplifier is working normally. When the indicator light is flashing, the backup power amplifier is working. When the indicator light is off, the circuit is closed.

### Technical Parameters

Model	GX-PB1413
Line In	4CH
Line Output	4-channel main output, 1-channel standby
Amplifier Input	4-channel main amplifier, 1-channel standby amplifier
Speaker Output	4 way
Power consumption	<30W
Net Weight	6.1Kg
Gross weight	7.4Kg
Product Size	483×342×90mm
Package Size	540×430×170mm
Working temperature	-5°C ~ 80°C
Working Humidity	20% ~ 80% relative humidity
Storage Temperature	20 ~ 30°C
Storage Humidity	25% ~ 50%

## Microphone with chime

GX-PB1410



### Features

- Use with host of pre-amplifier
- Simple and beautiful design with black hose, hard straight tube and curved base
- With a light ring indicator, the status of the microphone is clear
- Configure high-fidelity line, high-quality electret head, with clear sound effect
- It has transparent sound, super anti-howling ability and good pickup characteristics
- There is a bell prelude prompt tone when the microphone is turned on, and the volume is adjustable

### Technical Parameters

Model	GX-PB1410
Transducer Type	Capacitive type
Directivity	Cardioid pointing
Frequency Response	40Hz~16kHz
Sensitivity	38dB±2dB
Output Impedance	200Ω
Effective Pickup Distance	20~60cm
Switching	Self-locking switch
Output; indicator	Unbalanced; seat indicator, tube indicator
Audio Cable	8m dual-core audio cable
Power Supply	DC3V/AC220V
Continuous Battery Life	18 hours (No.5 battery)
Net Weight	0.45kg
Gross Weight	0.9kg
Microphone Base	115×140×30mm
Package Size	465×65×19mm
Working Temperature	-5°C~80°C
Working Humidity	20%~80% relative humidity
Storage Temperature	20~30°C
Storage Humidity	25%~50%

## Remote Paging Microphone

**GX-PB1414**



### Features

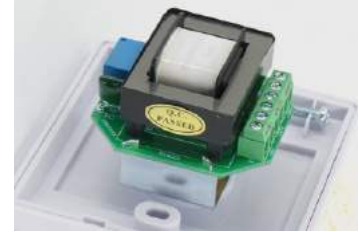
- Use with audio matrix controller and program zoon controller
- Light-touch button panel design, high-definition 3-inch true color screen display, full graphical menu design, convenient operation, beautiful and practical
- Support functions such as remote partition control, control of broadcast audio sources, transmission of audio or speech, etc.
- Equipped with a cardioid microphone, the volume of the microphone can be adjusted independently
- It has 1 external audio line input, which can transmit the local sound to the designated partition for broadcasting
- Built-in MP3 player, supports audio file playback, and has a volume adjustment knob, which can be transmitted to designated partitions for broadcasting in real time
- With 2 output interfaces, it can be connected to the host of the broadcasting system, and the effective signal transmission distance is up to 100 meters. It supports hand-in-hand connection and can cascade 16 remote call stations.

### Technical Parameters

Model	GX-PB1414
Frequency response	40Hz~16kHz±1dB
Directivity	Cardioid directivity
MIC sensitivity	50dB±1dB
Memory	2G memory + extended SD memory card
Audio format	MP3, WMA, AAC, WAV, APE, FLAC
Receiving method	FM 87.0MHz~108MHz
Recording input	MIC 5mV LINE 500mV
Audio output	500mV balanced
Audio distortion	±0.1%
Control method	RS485
Computer online	USB2.0
Display screen	3.0 inch TFT true color screen
Power supply	DC12V 1.5A
Power	≤5W
Net weight	1.2kg
Gross weight	1.75kg
Product size	310×150×52mm
Package size	535×220×75mm
Working temperature	-5°C~80°C
Working humidity	20%~80% relative humidity
Storage temperature	20~30°C
Storage humidity	25%~50%

## Volume Controller

**GX-VC105/GX-VC130/  
GX-VC160/GX-VC1120**



**GX-VC105**

**GX-VC130/GX-VC160/GX-VC1120**

Model	GX-VC105	GX-VC130	GX-VC160	GX-VC1120
Load power	6W	30W	60W	120W
Input voltage	100V	100V	100V	100V
Attenuation value of each gear	6dB	6dB	6dB	6dB
Total attenuation	18dB	18dB	18dB	18dB
Gear	5	5	5	5
Power cut function	No	No	No	No
Product color	White	White	White	White
Installation method	Standard 86 box installation	Standard 86 box installation	Standard 86 box installation	Standard 86 box installation
Product Size	87×87×44mm	87×87×60mm	87×87×70mm	87×87×70mm
Material	ABS	ABS	ABS	ABS
Net weight	60g	160g	320g	330g
Gross weight	4kg/48pcs	5kg/24pcs	8.7kg/24pcs	9kg/24pcs

## Volume Controller

**GX-VC105T/GX-VC130T/  
GX-VC160T/GX-VC1120T**



With District Switching Power Function

**GX-VC105T**

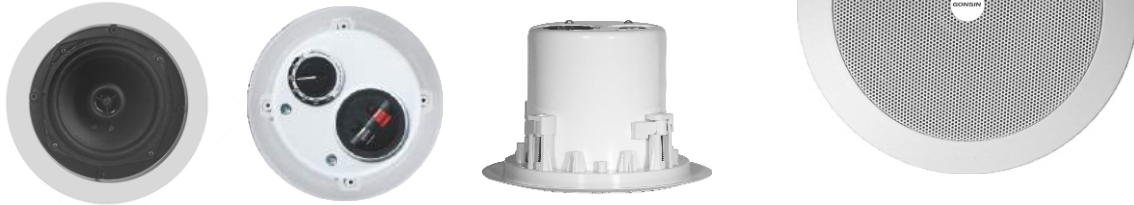
**GX-VC130T/GX-VC160T/GX-VC1120T**

Model	GX-VC105T	GX-VC130T	GX-VC160T	GX-VC1120T
Load power	6W	30W	60W	120W
Input voltage	100V	100V	100V	100V
Attenuation value of each gear	6dB	6dB	6dB	6dB
Total attenuation	18dB	18dB	18dB	18dB
Gear	5	5	5	5
Power cut function	DC24V	DC24V	DC24V	DC24V
Product color	White	White	White	White
Installation method	Standard 86 box installation	Standard 86 box installation	Standard 86 box installation	Standard 86 box installation
Product Size	87×87×44mm	87×87×60mm	87×87×70mm	87×87×70mm
Material	ABS	ABS	ABS	ABS
Net weight	60g	160g	320g	330g
Gross weight	4kg/48pcs	5kg/24pcs	8.7kg/24pcs	9kg/24pcs



## ■ Ceiling Speaker

**GX-SP105B/GX-SP106B/  
GX-SP108B**



Model	GX-SP105B	GX-SP106B	GX-SP108B
Power selection	20W/10W/5W/2.5W	30W/15W /7.5W/3.8W	40W/20W/10W/5W
Input	100V/70V/8Ω	100V/70V/8Ω	100V/70V/8Ω
Speaker unit	5"×1+2"×1	6"×1+2"×1	8"×1+2"×1
Sensitivity	88±3dB	88±3dB	88±3dB
Frequency response	100~20kHz	90~20kHz	50~18kHz
Product dimensions (DxH)	Φ203×145mm	Φ230×150mm	Φ270×185mm
Hole size	Φ170mm	Φ200mm	Φ240mm
Material	Panel:ABS, backshell:IRON	Panel:ABS, backshell:IRON	Panel:ABS, backshell:IRON
Weight	1.68kg	2.16kg	2.92kg

## ■ Ceiling Speaker

**GX-SP105DP/GX-SP106DP  
GX-SP108DP**



Model	GX-SP105DP	GX-SP106DP	GX-SP108DP
Rated power	20W	30W	40W
Power Selection	20W/10W/5W	30W/15W/7.5W	40W/20W/10W
Input Voltage	100V	100V	100V
Sensitivity	88 ± 3dB	88 ± 3dB	88 ± 3dB
Frequency Response	100Hz~20KHz	90Hz~20KHz	50Hz~20KHz
Product Size (D × H)	Φ 203 × 80mm	Φ 230 × 90mm	Φ 270 × 105mm
Opening size	Φ 170mm	Φ 200mm	Φ 240mm
Material	Panel:ABS	Panel:ABS	Panel:ABS
Weight	1.28kg	1.62kg	2.12kg

**Ceiling Speaker**

**GX-SP104EP/GX-SP105EP/  
GX-SP106EP**



Model	GX-SP104EP	GX-SP105EP	GX-SP106EP
Rated power	6W	6W	6W
Power Selection	6W/3W	6W/3W	6W/3W
Input Voltage	100V	100V	100V
Sensitivity	90 ± 3dB	90 ± 3dB	90 ± 3dB
Frequency Response	110Hz~15KHz	110Hz~15KHz	110Hz~15KHz
Product Size (D × H)	Φ 180 × 50mm	Φ 200 × 67mm	Φ 245 × 67mm
Opening size	Φ 155mm	Φ 170mm	Φ 225mm
Material	IRON	IRON	IRON
Weight	0.62kg	0.68kg	1.04kg

**Ceiling Speaker**

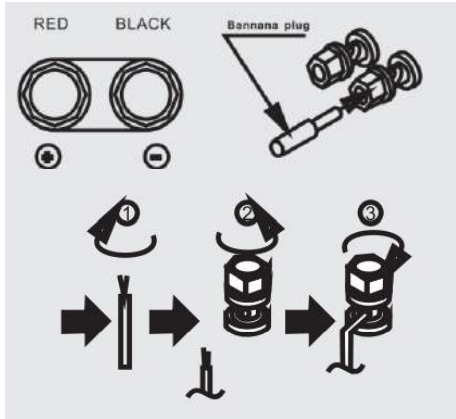
**GX-SP105FP**



Model	GX-SP105FP
Rated power	6W
Power Selection	6W/3W
Input Voltage	100V
Sensitivity	90 ± 3dB
Frequency Response	100Hz~18KHz
Product Size (D × H)	Φ 200 × 90mm
Opening size	Φ 175mm
Material	IRON
Weight	0.9kg

## Wall in Fitted Speaker

GX-SP204B/GX-SP204W  
GX-SP205B/GX-SP205W  
GX-SP206B/GX-SP206W  
GX-SP208B/GX-SP208W



GX-SP204B/GX-SP204W/  
GX-SP205B/GX-SP205W/  
GX-SP206B/GX-SP206W



GX-SP208B/GX-SP208W

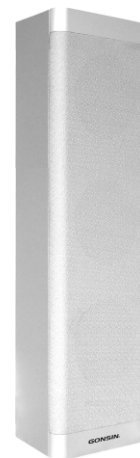
Model	GX-SP204B GX-SP204W	GX-SP205B GX-SP205W	GX-SP206B GX-SP206W	GX-SP208B GX-SP208W
Power	20W	30W	40W	60W
Input	70V/100V	70V/100V	70V/100V	100V
Sensitivity (1m/1W)	87 ± 3dB	88 ± 3dB	89 ± 3dB	88 ± 3dB
Frequency response	100Hz~20KHz	85Hz~20KHz	70Hz~20KHz	40~20KHz
Product dimensions (WxDxH)	170 × 150 × 215mm	182 × 162 × 242mm	215 × 190 × 284mm	289 × 255 × 417mm
Installation form	Wall-mounted	Wall-mounted	Wall-mounted	Wall-mounted
Color	B for black / W for white	B for black / W for white	B for black / W for white	B for black / W for white
Material	ABS	ABS	ABS	ABS
Weight	2.2kg	2.5kg	3.5kg	6.4kg

## Indoor Wooden Column Speaker

GX-SP320A/GX-SP340



GX-SP320A

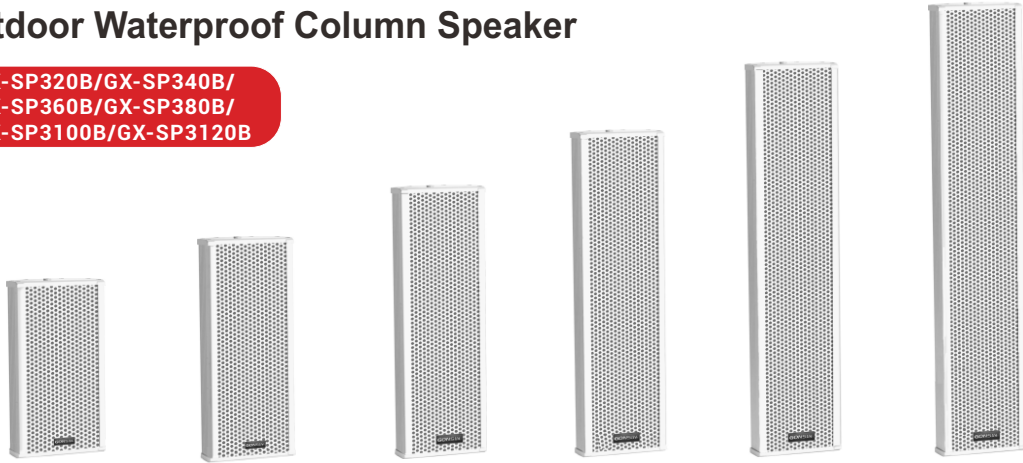


GX-SP340A

Model	GX-SP320A	GX-SP340A
Rated power	20W	40W
Input voltage	70V/100V	70V/100V
Sensitivity (1m/1W)	92dB	97dB
Frequency response	150Hz~13KHz	150Hz~13KHz
Product dimensions (WxDxH)	360×115×365mm	360×115×605mm
Material	Wooden box with cloth mesh surface	Wooden box with cloth mesh surface
Weight	3.2kg	5.6kg

## Outdoor Waterproof Column Speaker

**GX-SP320B/GX-SP340B/  
GX-SP360B/GX-SP380B/  
GX-SP3100B/GX-SP3120B**



**GX-SP320B      GX-SP340B      GX-SP360B      GX-SP380B      GX-SP3100B      GX-SP3120B**

Model	GX-SP320B	GX-SP340B	GX-SP360B	GX-SP380B	GX-SP3100B	GX-SP3120B
Rated power	10W/20W	20W/40W	30W/60W	40W/80W	50W/100W	60W/120W
Input voltage	100V/70V	100V/70V	100V/70V	100V/70V	100V/70V	100V/70V
Sensitivity (1m/1W)	93dB±3dB	94dB±3dB	95dB±3dB	96dB±3dB	97dB±3dB	98dB±3dB
Frequency response	140Hz~15KHz	140Hz~15KHz	140Hz~15KHz	140Hz~15KHz	140Hz~15KHz	140Hz~15KHz
Product sizes(WxDxH)	304×227×125mm	520×227×125mm	736×227×125mm	952×227×125mm	1168×227×125mm	1384×227×125mm
Material	Aluminum	Aluminum	Aluminum	Aluminum	Aluminum	Aluminum
Weight	3.2kg	4.76kg	6.58kg	8.14kg	9.48kg	11.10kg
Waterproof level	IP66	IP66	IP66	IP66	IP66	IP66

## Outdoor Waterproof Column Speaker

**GX-SP310C/GX-SP320C/  
GX-SP330C/GX-SP340C**



**GX-SP310C      GX-SP320C      GX-SP330C      GX-SP340C**

Model	GX-SP310C	GX-SP320C	GX-SP330C	GX-SP340C
Rated power	15W	25W	35W	45W
Input voltage	100V	100V	100V	100V
Sensitivity (1m/1W)	89±3dB	92dB±3dB	94dB±3dB	94dB±3dB
Frequency response	100Hz~15KHz	100Hz~15KHz	100Hz~15KHz	100Hz~15KHz
Product sizes(WxDxH)	258×151×125mm	378×151×125mm	498×151×125mm	618×151×125mm
Material	Aluminum	Aluminum	Aluminum	Aluminum
Weight	2.16kg	2.98kg	3.9kg	4.82kg
Waterproof level	IP66	IP66	IP66	IP66

## Outdoor Waterproof Column Speaker

GX-SP310D/GX-SP320D/  
GX-SP330D/GX-SP340D



Model	GX-SP310D	GX-SP320D	GX-SP330D	GX-SP340D
Rated power	10W/5W	20W/10W	30W/15W	40W/20W
Input voltage	100V/70V	100V/70V	100V/70V	100V/70V
Sensitivity (1m/1W)	88dB±3dB	91dB±3dB	92dB±3dB	93dB±3dB
Frequency response	100Hz~20KHz	100Hz~20KHz	100Hz~20KHz	100Hz~20KHz
Product sizes(WxDxH)	253×152×100mm	375×152×100mm	493×152×100mm	613×152×100mm
Material	Aluminum	Aluminum	Aluminum	Aluminum
Weight	1.8kg	2.5kg	3.32kg	4.12kg
Waterproof level	IP66	IP66	IP66	IP66

## Wall Mounted Speaker

GX-SP310E



Model	GX-SP310E
Rated power	10W
Power selection	5W/10W
Input voltage	100V
Sensitivity (1m/1W)	92±3dB
Frequency response	110Hz~15KHz
Product dimensions	260×180×120mm
Material	HIPS
Weight	1.18kg

## Wall Mounted Speaker

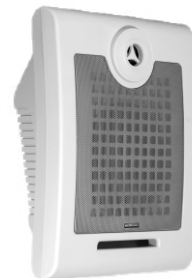
GX-SP310F



Model	GX-SP310F
Rated power	10W
Power selection	5W/10W
Input voltage	100V
Sensitivity (1m/1W)	92±3dB
Frequency response	150Hz~15KHz
Product dimensions	260×185×120mm
Material	HIPS
Weight	1.17kg

## Wall Mounted Speaker

GX-SP310G



Model	GX-SP310G
Rated power	10W
Power selection	5W/10W
Input voltage	100V
Sensitivity (1m/1W)	92±3dB
Frequency response	150Hz~15KHz
Product dimensions	275×182×120mm
Material	HIPS
Weight	1.33kg

**Hanging Speaker**

**GX-SP410B**



Model	GX-SP410B
Rated power	3W/10W
Input voltage	70V/100V
Sensitivity (1m/1W)	90dB
Frequency response	90Hz~16KHz
Product dimensions	Φ200×450mm
Material	ABS plastic
Weight	0.92kg

**Hanging Speaker**

**GX-SP420E**



Model	GX-SP420E
Rated power	20W
Input voltage	100V
Sensitivity (1m/1W)	92dB
Frequency response	110Hz~15KHz
Product dimensions	Φ170×245mm
Material	ABS plastic
Weight	1.7kg

**Directional Waterproof Horn**

**GX-SP520A**



Model	GX-SP520A
Rated power	20W
Input voltage	100V
Sensitivity (1m/1W)	92dB
Frequency response	100-15KHz
Product dimensions	170×252mm
Material	ABS
Weight	3.4kg

**Waterproof Horn**

**GX-SP615**



Model	GX-SP615
Rated power	15W
Power selection	7.5W/15W
Input voltage	100V
Sensitivity	105±3dB
Frequency response	400Hz~8kHz
Product dimensions	222 × 162 × 232mm
Hole size	50mm
Material	ABS
Weight	1.4kg
Waterproof Level	Ip66

## ■ Waterproof Horn

**GX-SP630**



Model	GX-SP630
Rated power	30W
Power selection	15W/30W
Input voltage	100V
Sensitivity	105±3dB
Frequency response	400Hz~6KHz
Product dimensions	285 × 205 × 285mm
Hole size	50mm
Material	ABS
Weight	2.1kg
Waterproof Level	Ip66

## ■ Waterproof Horn

**GX-SP650**



Model	GX-SP650
Rated power	50W
Power selection	25W/50W
Input voltage	100V
Sensitivity	109±3dB
Frequency response	380Hz~6.5kHz
Maximum Sound Pressure Level	116dB
Product dimensions	Φ325×350mm
Hole size	50mm
Material	Aluminum
Weight	2.58kg
Waterproof Level	Ip66

## ■ All-weather Constant Pressure Large Horn Speaker

**GX-SP6100B/GX-SP6200B/  
GX-SP6300B/GX-SP6400B/  
GX-SP6500B**



Model	GX-SP6100B	GX-SP6200B	GX-SP6300B	GX-SP6400B	GX-SP6500B
Rated power	100W	200W	300W	400W	650W
Input voltage	100V	100V	100V	100V	100V
All-weather Horn Bass	1×8"	1×10"	1×12"	1×15"	1×18"
Tweeter	1×1"	1×1"	1×1.5"	1×1.5"	1×2"
Sensitivity	94dB	94dB	96dB	94dB	96dB
Frequency response	100Hz~20KHz	100Hz~20KHz	80Hz~20KHz	75Hz~20KHz	100Hz~20KHz
Coverage	90°× 90°	90°× 90°	90°× 90°	90°× 90°	90°× 90°
Max. sound pressure level	110dB	115dB	120dB	125dB	132dB
Range	100m	200m	300m	400m	600m
Product size	560×370×370mm	695×475×475mm	790×590×590mm	790×590×590mm	900×710×710mm
Material	Industrial resin fiberglass box				
Weight	17kg	22kg	31kg	37kg	45kg

**Garden Speaker**



**GX-SP712A**

Speaker Size	5.25 " waterproof coaxial
Rated power	20W
Speaker input	70/100V
Speaker cable	50CM
Protection grade	IP 44
Speaker Size	220×210×230 mm
Carton dimension	243×230×245mm
Net weight	3.0±0.3kg
Gross weight	3.4±0.3kg



**GX-SP712B**

Speaker Size	5.25 " waterproof coaxial
Rated power	20W
Speaker input	70/100V
Speaker cable	50CM
Protection grade	IP 44
Speaker Size	200×210×210mm
Carton dimension	233×213×245mm
Net weight	3.0±0.3 kg
Gross weight	3.5±0.3 kg



**GX-SP712C**

Speaker Size	5.25 " waterproof coaxial
Rated power	20W
Speaker input	70/100V
Speaker cable	50CM
Protection grade	IP 44
Speaker Size	230×210×255 mm
Carton dimension	257×220×295mm
Net weight	3.0±0.3 kg
Gross weight	3.4±0.3 kg



**GX-SP713B**

Speaker Size	6.5 " waterproof coaxial
Rated power	30W
Speaker input	70/100V
Speaker cable	50CM
Protection grade	IP 44
Speaker Size	370×290×260 mm
Carton dimension	390×310×320mm
Net weight	4.9±0.5kg
Gross weight	5.4±0.5kg



**GX-SP713D**

Speaker Size	6.5 " waterproof coaxial
Rated power	30W
Speaker input	70/100V
Speaker cable	50CM
Protection grade	IP 44
Speaker Size	470×310×280 mm
Carton dimension	485×325×320mm
Net weight	4.5±0.5 kg
Gross weight	5.0±0.5 kg



**GX-SP713G**

Speaker Size	5.25 " waterproof coaxial
Rated power	20W
Speaker input	70/100V
Speaker cable	50CM
Protection grade	IP 44
Speaker Size	340×265×275 mm
Inner carton size	345×265×290mm
Outer carton size	360×280×315 mm
Net weight	4.2±0.4 kg
Gross weight	5.4±0.5 kg



**GX-SP713J**

Speaker Size	6.5 " waterproof coaxial
Rated power	30W
Speaker input	70/100V
Speaker cable	50CM
Protection grade	IP 44
Speaker Size	385×265×445 mm
Carton dimension	395×280×495mm
Net weight	6.5±0.7kg
Gross weight	7.7±0.7kg



**GX-SP713K**

Speaker Size	6.5 " waterproof coaxial
Rated power	30W
Speaker input	70/100V
Speaker cable	50CM
Protection grade	IP 44
Speaker Size	410×380×335mm
Inner carton size	410×380×350mm
Outer carton size	425×395×375mm
Net weight	7.6±0.8Kg
Gross weight	9.3±0.9Kg



**GX-SP713L**

Speaker Size	6.5 " waterproof coaxial
Rated power	30W
Speaker input	70/100V
Speaker cable	50CM
Protection grade	IP 44
Speaker Size	470×430×540 mm
Inner carton size	480×440×555mm
Outer carton size	495×455×580mm
Net weight	8.2±0.8 kg
Gross weight	9.0±0.9 kg





**GX-SP714A**

Speaker Size	6.5 " Bass × 2, 2 " Treble
Rated power	40W
Speaker input	70/100V
Speaker cable	50CM
Protection grade	IP 44
Speaker Size	335×273×510 mm
Outer carton size	350×280×540mm
Net weight	6.0±0.6 kg
Gross weight	6.5±0.7 kg



**GX-SP714B**

Speaker Size	5.25 " waterproof coaxial × 2
Rated power	40W
Speaker input	70/100V
Speaker cable	50CM
Protection grade	IP 44
Speaker Size	335×273×510 mm
Outer carton size	350×280×540mm
Net weight	6.2±0.6kg
Gross weight	6.7±0.7 kg



**GX-SP715B**

Speaker Size	8 " Bass 2 " Treble
Rated power	50W
Speaker input	70/100V
Speaker cable	50CM
Protection grade	IP 44
Speaker Size	590×320×285 mm
Outer carton size	610×325×325mm
Net weight	9.0±0.9 kg
Gross weight	10±1.0 kg



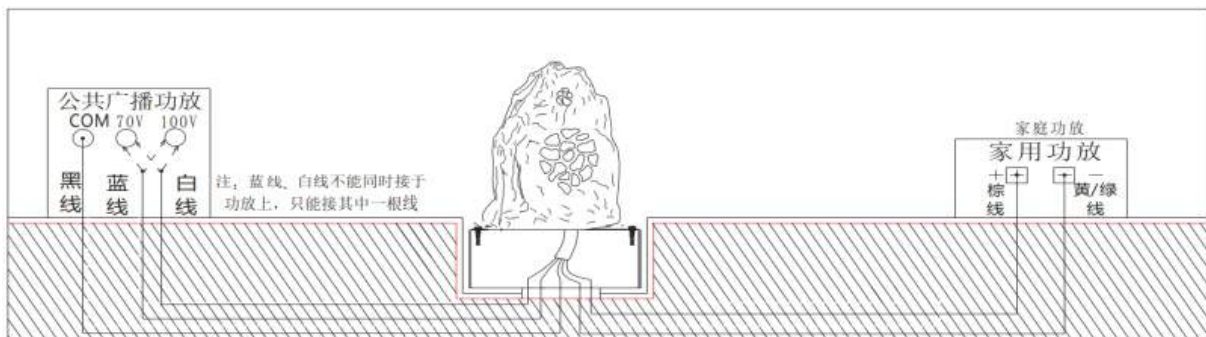
**GX-SP715C**

Speaker Size	8 " Bass, 2 " Treble
Rated power	50W
Speaker input	70/100V
Speaker cable	50CM
Protection grade	IP 44
Speaker Size	700×380×335 mm
Outer carton size	720×380×370mm
Net weight	10.6±1.1 kg
Gross weight	12±1.2 kg



**GX-SP718A**

Speaker Size	8 " Bass, 2 " Treble × 2
Rated power	80W
Speaker input	70/100V
Speaker cable	50CM
Protection grade	IP 44
Speaker Size	610×345×370 mm
Outer carton size	630×365×415mm
Net weight	15±1.5 kg
Gross weight	16.2±1.5 kg
Two azimuth playback	



## Cartoon Speaker



**GX-SP721A**

Shape	Squirrel
Speaker Size	4 " waterproof coaxial
Rated power	10W
Speaker input	70/100V
Speaker cable	50CM
Protection grade	IP 44
Speaker Size	290×275×470mm
Inner carton size	295×285×485MM
Outer carton size	310×300×510MM
Net weight	5.3±0.5kg
Gross weight	7.2±0.7kg



**GX-SP722C**

Shape	Panda
Speaker Size	6.5 " waterproof coaxial
Rated power	30W
Speaker input	70/100V
Speaker cable	50CM
Protection grade	IP 44
Speaker Size	415×375×460MM
Outer carton size	430×390×485MM
Net weight	5.1±0.5kg
Gross weight	7.7±0.8kg



**GX-SP722E**

Shape	Spotted dog
Speaker Size	5.25 " waterproof coaxial
Rated power	20W
Speaker input	70/100V
Speaker cable	50CM
Protection grade	IP 44
Speaker Size	340×335×525mm
Inner carton size	350×345×530MM
Outer carton size	365×360×555MM
Net weight	5.7±0.6kg
Gross weight	7.7±0.7kg



**GX-SP722F**

Shape	Penguin
Speaker Size	5.25 " waterproof coaxial
Rated power	20W
Speaker input	70/100V
Speaker cable	50CM
Protection grade	IP 44
Speaker Size	370×305×415mm
Inner carton size	380×320×425MM
Outer carton size	395×335×450MM
Net weight	5.3±0.5kg
Gross weight	7.2±0.7kg



**GX-SP732A**

Shape	Tree
Speaker Size	5.25 " waterproof coaxial
Rated power	20W
Speaker input	70/100V
Speaker cable	50CM
Protection grade	IP 44
Speaker Size	φ 425×300 mm
Inner carton size	410×385×310MM
Outer carton size	425×400×335MM
Net weight	5.5±0.6kg
Gross weight	7.5±0.8kg



**GX-SP732B**

Shape	Stump
Speaker Size	6.5 "
Rated power	30W
Speaker input	70/100V
Speaker cable	50CM
Protection grade	IP 44
Speaker Size	380×375×305mm
Inner carton size	385×380×310mm
Outer carton size	400×395×335mm
Net weight	4.3±0.4Kg
Gross weight	6. 8±0. 7Kg



**GX-SP733AG**

Shape	Mushroom
Speaker Size	3×5 " ×2, 2 " ×2
Rated power	30W
Speaker input	70/100V
Speaker cable	50CM
Protection grade	IP 44
Material	Glass steel
colour	Green
Speaker Size	φ 370×395mm
Outer carton size	450×400×400mm
Net weight	5.4±0.5kg
Gross weight	6.8±0.7kg
360° play	



**GX-SP743B**

Speaker Size	6.5 "
Rated power	30W
Speaker input	70/100V
Speaker cable	50CM
Protection grade	IP 44
Speaker Size	φ 320×365
Net weight	6.5 ±0.5Kg
360° play	



## Lighting Speaker



**GX-SP781B**

Speaker Size	4 " coaxial
power	10W
Speaker input	70/100V
Speaker cable	50CM
Voltage of light fixture	110/230V
Power of light fixture	≤25W
Lamp base specification	E27
Light fixture cable	50CM
Protection grade	IP 44
Light Bulb	Self-equipped with LED or incandescent lamp
Speaker Size	φ 220×420mm
Net weight	5.1±0.6 kg



**GX-SP781E**

Speaker Size	4 " coaxial
power	10W
Speaker input	70/100V
Speaker cable	50CM
Voltage of light fixture	110/230V
Power of light fixture	≤25W
Lamp base specification	E27
Light fixture cable	50CM
Protection grade	IP 44
Light Bulb	Self-equipped with LED or incandescent lamp
Speaker Size	160×160×750 mm
Carton size	840×240×245mm
Net weight	6±0.6 kg
Gross weight	7±0.6 kg



**GX-SP781J**

Speaker Size	4 " coaxial
power	10W
Speaker input	70/100V
Speaker cable	50CM
Voltage of light fixture	110/230V
Power of light fixture	≤25W
Lamp base specification	E27
Light fixture cable	50CM
Protection grade	IP 44
Light Bulb	Self-equipped with LED or incandescent lamp
Speaker Size	390×365×735 mm
Carton size	435×405×785mm
Net weight	8.5±0.9kg
Gross weight	9.7±1kg



**GX-SP781K**

Speaker Size	4 " coaxial
power	10W
Speaker input	70/100V
Speaker cable	50CM
Voltage of light fixture	110/230V
Power of light fixture	≤25W
Lamp base specification	E27
Light fixture cable	50CM
Protection grade	IP 44
Light Bulb	Self-equipped with LED or incandescent lamp
Speaker Size	265×265×765 mm
Carton size	315×315×835mm
Net weight	9.5±0.9 kg
Gross weight	11.2±1.0 kg



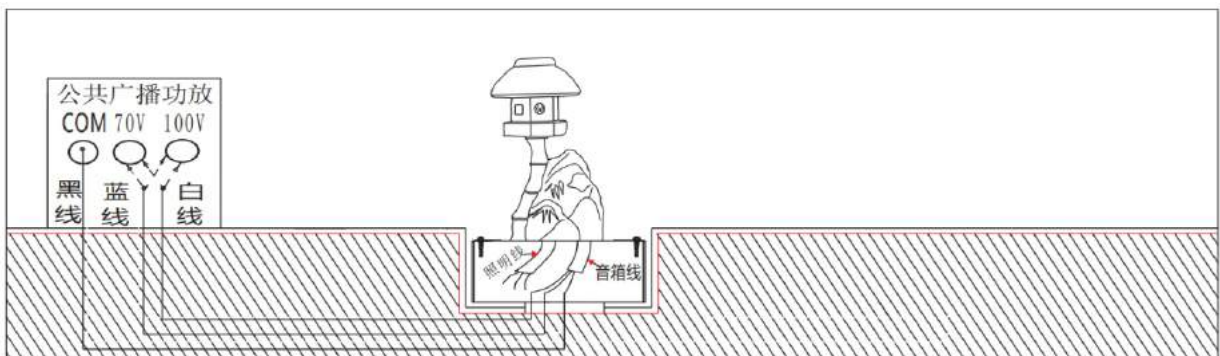
**GX-SP783B**

Speaker Size	6.5 " waterproof coaxial
power	30W
Speaker input	70/100V
Speaker cable	50CM
Voltage of light fixture	110/230V
Power of light fixture	≤25W
Lamp base specification	E27
Light fixture cable	50CM
Protection grade	IP 44
Light Bulb	Self-equipped with LED or incandescent lamp
Speaker Size	330×290×700 mm
Carton size	770×395×340mm
Net weight	10±1.0 kg
Gross weight	11.5±1 kg



**GX-SP782A**

Speaker Size	5.25 " waterproof coaxial
power	20W
Speaker input	70/100V
Speaker cable	50CM
Voltage of light fixture	110/230V
Power of light fixture	≤25W
Lamp base specification	E27
Light fixture cable	50CM
Protection grade	IP 44
Light Bulb	Self-equipped with LED or incandescent lamp
Speaker Size	320×320×785mm
Carton size	860×370×320mm
Net weight	6.0±0.6 kg
Gross weight	8±0.7 kg



GONSIN CONFERENCE EQUIPMENT CO.,LTD.  
[www.gonsin.com](http://www.gonsin.com)

All rights reserved. The information and specifications included are subject to change without prior notice.

