




# Intelligent Electronic Table Card

# Intelligent Electronic Table Card



**7.5-inch Electronic Paper**  
Soft display and no flicker  
Close to paper display effect  
Eye protection

**Dual-screen Display Synchronously**  
Real-time update customized Information with multiple templates  
Multiple conference themes can be managed separately

**Create a Paperless Office**



**NAME**

WWW.GONSIN.COM +86-189-2326-8901  
GONSIN CONFERENCE EQUIPMENT CO.,LTD.

### Multi-Platform Support

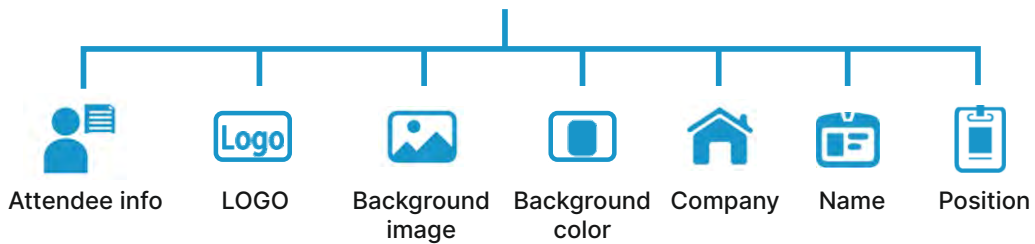
Support Android, IOS, Harmony, WINDOWS System  
With simple UI interface  
Many functions and simple operation  
High working efficiency



## Display the Information Synchronously

### Dual-screen Design

### Easy to use



### Ultra-low power consumption

Battery life can be lasted 2 years



# ◆ Intelligent Electronic Table Card

## GX-ENP075B



### ◆ Basic Functions

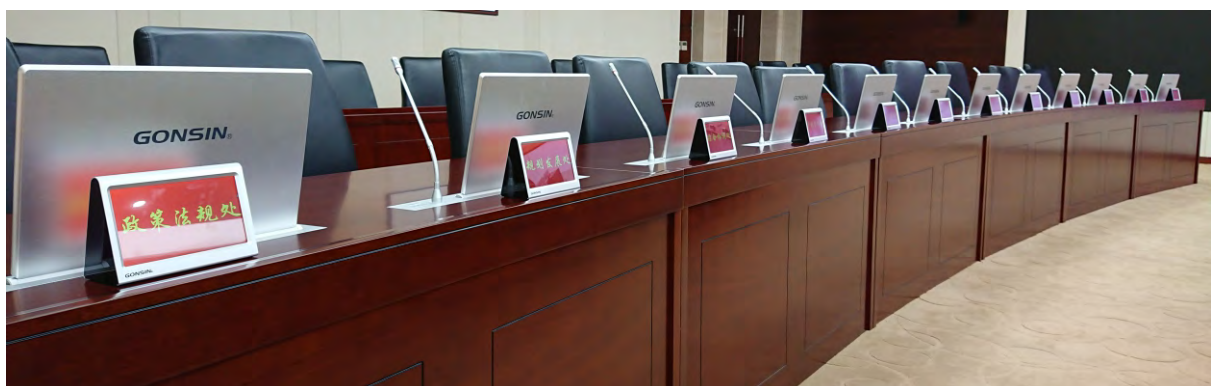
- ◆ Adopt new technology, fashionable appearance, exquisite and high-grade, a variety of color appearance, suitable for various scenes.
- ◆ The body and cover are moulded in one piece, and the thinnest part of the body is only 5.8mm, which is anti-drop and wear-resistant.
- ◆ 7.5-inch e-ink screen, close to the paper display effect, soft and natural display screen, no flicker, does not affect the shooting effect
- ◆ 2.4G BLE Bluetooth transmission technology, low power consumption, strong anti-interference; with two No. 5 dry cell battery power supply, long life, full power can be used for more than 24 months (based on laboratory data: daily refresh one time)
- ◆ Support black, white and red color display with high contrast ratio.
- ◆ Front and rear dual-screen design, dual-screen synchronous display of participant information, Logo, background image, color, company, name, position and other information
- ◆ No management required, zero loss, durable, convenient deployment, and easy maintenance

#### ◆ Connecting electronic table cards through a network base station can achieve:

- Realize the host computer software and intelligent conference management platform to perform display, editing, management and data transmission functions on single or multiple electronic table cards, quickly complete batch updates, and meet various needs.
- After connecting to the intelligent conference management platform, the electronic table cards can be managed uniformly. The content can be automatically updated according to the meeting schedule, and corresponding information can be displayed for different meetings.

#### ◆ Directly connecting electronic table cards through NFC and Bluetooth can achieve:

- By connecting mobile phones with Bluetooth or NFC, Android, Harmony and IOS terminals can edit single or multiple electronic table cards. The images will be displayed permanently after refreshing, and conference templates can be distributed with one click.





## ◆ Technical Specifications

Display	7.5-inch Dual E-ink Screens
Resolution	800×480
DPI	125
Viewing Area	161.0mm×96.0mm
Display Color	Black, white, red
Viewing Angle	Up, down, left, right>178°
Battery Life	24 months of full battery life (based on lab data)
Communication	Bluetooth BLE 2.4G/5.0, NFC ISO/IEC14443-A
Distance(when there is no obstruction and no interference)	<p><b>NFC update:</b> within 10cm communication distance between mobile phone and table card</p> <p><b>Bluetooth update:</b> within 15 meters of the communication distance between the mobile phone and table card</p> <p><b>Bluetooth base station update:</b> within 15 meters of the communication distance between table card and network base station</p>
Appearance Color	Silver, can be customized white, wood grain color
Working Voltage	2.5V ~ 3.6V
Working Current	Brush screen current 50mA, standby current 0.2mA
Power Supply Mode	2 x Alkaline Dry Battery 5
Wireless Band	BLE 5.0/Bluetooth, 2.402 ~ 2.480GHz
Network Base Station Update Method	Connect the network base station for content updating through the software of the upper computer and the intelligent conference management platform
Bluetooth Update Method	Update the content through mobile phone Bluetooth and use APP
NFC Update Method	Through mobile phone NFC close to the central position of the table card, and use APP to update content
Support Platforms	<p><b>When using network base station:</b> support WINDOWS 7/10 operating system, linux.</p> <p><b>When using mobile phone Bluetooth:</b> support Android ( 7.0 or above), IOS (9.0 or above), Harmony</p>
Installation	Desktop
Product Size	134.0×209.2×35.2 mm; display surface thickness only 5.8mm
Package Size	420×320×230mm
Net Weight	258±5g
Working Temperature	0~40°C
Storage Temperature	-20~50°C

# ◆ Network Base Station

GX-AP102-Y



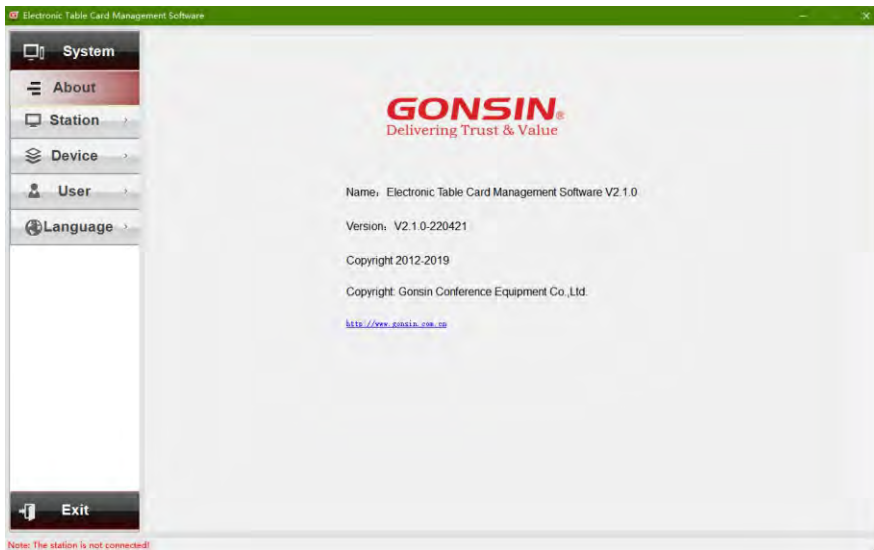
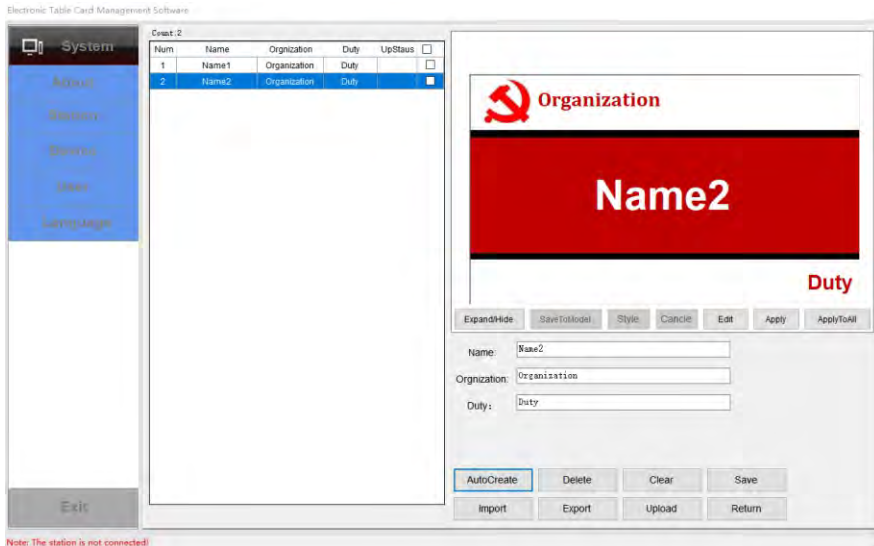
## ◆ Basic Functions

- ◆ Connected through the network base station, support through the host computer software, intelligent conference management platform connected to the network base station for editing and management, 57 seconds to complete the batch update
- ◆ Normal communication radius between table card and network base station is ≤15 meters to meet various occasions.
- ◆ External small suction cup antenna design, comes with 2 meters of connecting cable, the server can be hidden
- ◆ High-performance processing capabilities, using 32-bit 4-core Cortex-A17 processor, the highest main frequency 1.8G, equipped with Android 7.1 system.
- ◆ With dual-screen heterodyne function, support HDMI 4K@60fps, EDP 4K×2K@30fps, LVDS 1920×1080@30fps.
- ◆ With a wealth of external interfaces, 6 USB interfaces, 1 TP interface, 1 SPI interface, 1 I2C interface, 2 groups of TTL serial port is perfectly compatible with the customer's expansion needs.
- ◆ Equipped with multiple function keys and status lights, reset button, power button and multi-function keys (customizable) to control the device, 3 status lights can monitor the current status of the base station.
- ◆ Support 4G communication function.
- ◆ Support battery backup to maintain emergency response in case of sudden power failure.

## ◆ Technical Specifications

CPU	Quad-core Cortex-A17 up to 1.8GHz
GPU	Mali-T764, supports OpenVG1.1, OpenGL ES1.1/2.0/3.0, OpenCL1.1, RenderScript and DirectX11.OpenCL1.1, RenderScript and DirectX11.
Operating System	Android 7.1
RAM	DDR3×4, 2GB
ROM	EMMC 8/16GB, supports TF card expansion.
WIFI	802.11b/g/n
BT	Bluetooth V4.0
Display	1×Dual/Single LVDS 1920×1080@30fps/1280×800@30fps
TP	Support USB interface TP
USB	2×USB TYPE A (one of them supports OTG2.0)
Serial Port	1×RS485 interface
Other Expansion Interfaces	2×Magnetic lock interface + door detection
HDMI	1×HDMI1.4/2.0 4K×2K@60fps
Ethernet	4×10/100M RJ45 + 4×DC12V can be connected to 4-way IPC
Microphone	1×MIC
Speaker	Built-in, 8Ω/6W
Power Input	Standard 12V , 5A
Product Size	135.6×135×55mm
Operating Temperature	-20 ~ +70℃
Storage Temperature	-20 ~ +85℃
Operating Humidity	15% ~ 60%RH
Storage Humidity	15% ~ 60%RH

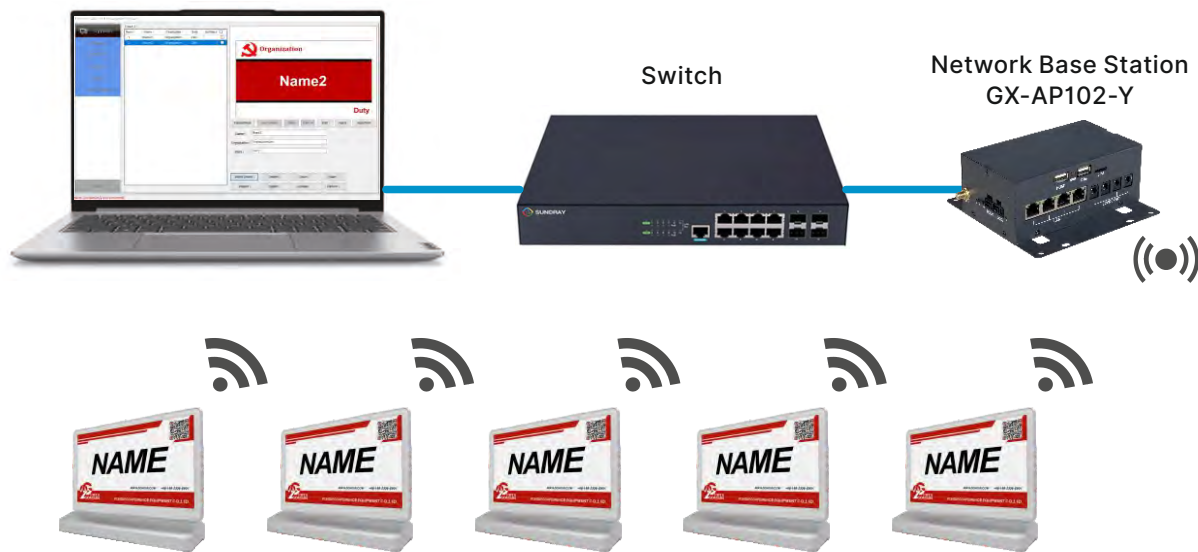
# Electronic Table Card Management Software V1.0



## Basic Functions

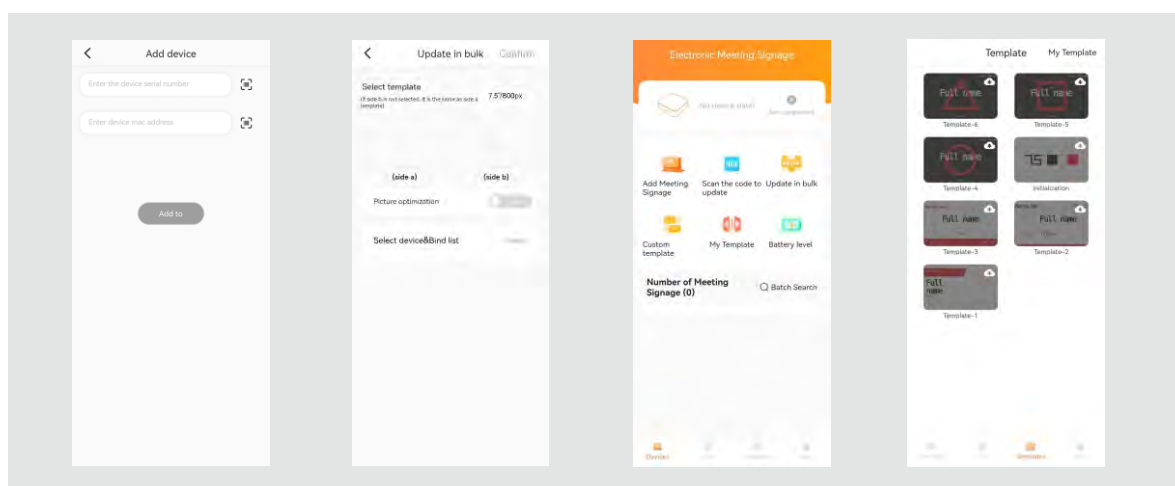
- ◆ Support one key to add, delete, clear and save electronic table card information
- ◆ Support ID number and modification
- ◆ Support display interface template customization and image import
- ◆ Support the editing of display content (company / name / position) and file import and export
- ◆ Support the application of single or multiple electronic table card templates and file upload
- ◆ Support base station selection and management
- ◆ Support Chinese and English language selection

# ◆ System Configuration



Network Base Station Connection Mode

# ◆ Table Card Assistant GX-AP102-Y





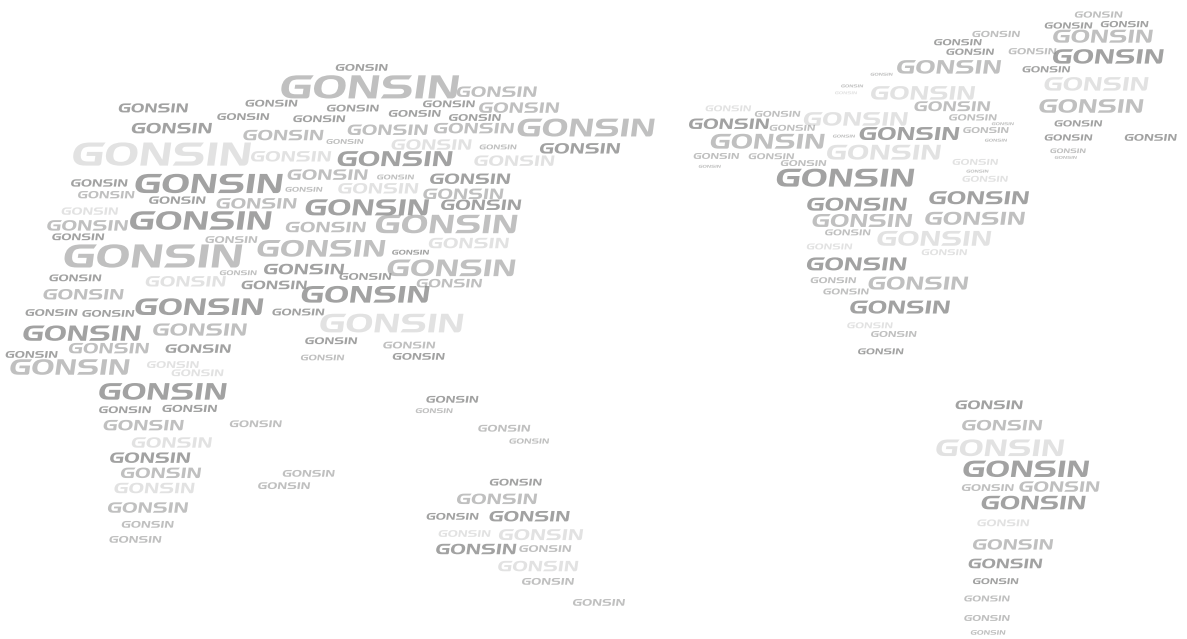
## ◆ Basic Functions

- ◆ Support mobile phone and tablet terminal APP management, based on Android, Harmony, IOS operating system
- ◆ Support multiple ways to update the display content, including code scanning, Bluetooth, NFC
- ◆ Online management system for single or multiple electronic desk cards, real-time update content, with monitoring devices (MAC address, power, software version, authorization information), device number statistics, device lock and unlock, device sorting and grouping functions
- ◆ Support one-click download, edit, and import huge amount of template materials, support customized template editing.
- ◆ One-click import of participant information to solve the problem of information entry and updating, while supporting batch correlation and position selection functions.
- ◆ Support the function of adding and deleting fonts (Android, Harmony)
- ◆ Support cropping of pictures, screen projection and saving to background management (Android, Harmony).
- ◆ Can arbitrarily add new meeting topics, meeting time, corresponding to the meeting venue in advance, importing data, supporting the addition of multiple meeting rooms, and corresponding to add different terminals for centralized management.
- ◆ Support switching between Chinese and English

## ◆ System Configuration



Bluetooth Base Station Connection Mode



GONSIN CONFERENCE EQUIPMENT CO.,LTD.  
[www.gonsin.com](http://www.gonsin.com)



English WeChat



B01

All rights reserved. The information and specifications included are subject to change without prior notice.