



Central Control System

Cloud Central Control System

◆ Central Control System Server

GX-CLOUD710S

GX-CLOUD710S central control server is based on cloud network communication technique, supporting cloud automatic system diagnosis, cloud backup and restore capability, remote control, remote commissioning during installation and remote appointment and remote debugging after installation. It applies multi-functional interface design, all serial ports and IO ports can be customized, which meet the demand of various engineering applications; Open and modular user programming interface allows user to control various devices and complicated programmatic interfaces with highly flexible programming language; the system can be expanded by wireless or wired method, a single system expansion is up to 65,535 bus devices.



◆ Product Features

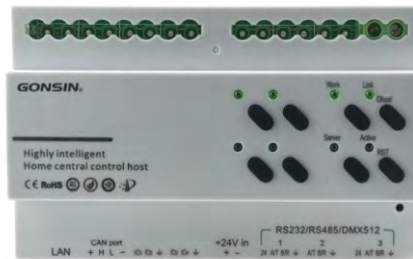
- ◆ Compact design, support standard cabinet installation, the front panel has a working indicator, connection indicator, infrared learning signal indicator, infrared sensor window, cloud service indicator can directly display the host working status
- ◆ Designed based on cloud technology, support for automatic system cloud diagnostics, cloud backup, cloud recovery, to ensure stable system operation and prevent accidental loss of data
- ◆ Support for single-system, multi-system deployment platform cluster management, to achieve interoperability and mutual control between systems, support for hierarchical authority management.
- ◆ Platform cluster management supports three ways: locally deployed servers, private cloud deployment servers and shared cloud servers.
- ◆ Support interconnection and mutual control of LAN devices, support interconnection and mutual control of Internet devices after system cloud deployment, support remote control, remote debugging, remote reservation and remote troubleshooting.
- ◆ The system adopts TEA+SSL encryption algorithm, which solves the confidentiality of network data transmission from the origin of data.
- ◆ Support Huawei Internet of Everything platform, Ali Internet platform, conference management system, monitoring management system, access control system, intelligent parking system and other system platform docking.
- ◆ Support for the Internet of Everything, access to CAN, I / O contact, IR control, RELAY, RS232, RS485, DMX512, TCP, UDP, API interface (http), SDK development kit docking, database, the system is seamlessly docked with the public trust meeting management system, support for system visualization and management.
- ◆ With timeline multi-threaded event editing function
- ◆ Support voice control, voice feedback function
- ◆ Automatic clock synchronization function, can accurately execute the user-defined time reservation function, can be accurate to the year, month, day, minute, hour and second.
- ◆ The system can be expanded by wireless or wired, and the single system supports the expansion of 65535 bus devices.

- ◆ The system supports self-backup function of the host and dual-machine backup function, which has high security performance.
- ◆ With open and modularized programming mode, supporting a variety of controls, easy-to-learn programming and high flexibility.
- ◆ Support Harmonyos terminal, Android terminal, IOS terminal, Windows terminal, 4- inch/7- inch touch panel control.
- ◆ Support saving and querying of operation records
- ◆ The human-computer interaction interface supports dynamic control display, video conference address book dialing, player list control, dynamic icon display and other functions.
- ◆ Configuration of 4-core 1.4GHz multi-threaded multi-core processor, 32-bit embedded processor, 1G memory, 8G Flash memory.
- ◆ Cloud host adopts multi-functional interface design, all serial ports and IO ports support customization, port multiplexing, a cloud host to meet a variety of different engineering applications interface requirements
- ◆ With 2 groups of CAN bus control interface, baud rate of 125Kbps, a single centralized control host can connect up to 220 terminals.
- ◆ With 8 RS-232/RS-485/DMX-512 interfaces, using 3.8mm phoenix terminal interface, the first and the fifth road support 24V power supply output
- ◆ Support 4-channel contact output, each channel can support 30V/1A DC, 125V/0.5A AC loads.
- ◆ With 8 IR infrared emission control interface / IO digital signal input and output interfaces, support for full-band carrier infrared modulation signal transmission
- ◆ With network LAN interface, support for TCP, UDP, API interface (http), SDK development kit docking, database docking
- ◆ With IR USB infrared learning port, with the infrared sensor window/IR-T connection port, can be infrared remote control code learning to the centralized control host, to achieve centralized control
- ◆ Support for interface expansion, CAN bus terminals, protocol control terminals, digital input/output terminals, contact terminals can be selected to expand the interface to realize the control of more devices, the expansion of the terminal and the central control host using a network connection, support for remote management of equipment.
- ◆ Interface over-voltage and over-current protection, anti-static shock 20KV
- ◆ Internal power supply voltage 24V, power consumption <5W

Technical Parameters

Memory	1G RAM, 8G Flash memory
Main Frequency	4-core CPU, 1.4GHz main frequency, 32-bit embedded processor
Communication	CAN, Ethernet, WIFI, TCP/IP
Digital I/O Port	Support 8-way I/O digital signal input and output (multiplexed with infrared port)
Infrared port	Support 8-way infrared emission control, support for full-band carrier infrared modulation signal transmission (and digital I/O port multiplexing)
RS-232/RS-485/DMX512 Port	8-way, support RS-232/RS-485/DMX512, port parameter customization, the first 5-channel support 24V power output
RELAY OUT port	Support 4-way RELAY OUT contact, support 30V/1A DC, 125V/0.5A AC loads
CAN bus signal management	2 ways, support DC24V power supply, each bus can support up to 110 terminal devices.
Network Port	Support TCP, UDP, API interface (http), SDK development kit docking, database docking
Power supply	Internal power supply voltage 24V, power consumption <5W
Dimensions(L×W×H)	483×145×44mm
Weight (L×W×H)	2.5kg

◆ Central Control Server (DIN-rail) GX-CLOUD730S



◆ Product Features

- ◆ DIN-rail design, with working indicator, interface working indicator, network working indicator, cloud service indicator can directly display the working status of the host.
- ◆ Designed based on cloud technology, it supports automatic system cloud diagnosis, cloud backup and cloud recovery to ensure stable system operation and prevent accidental data loss.
- ◆ Support single system, multi-system local or off-site cluster management, realize interconnection and mutual control between systems, and support hierarchical authority management.
- ◆ Support interconnection and mutual control of LAN devices, support interconnection and mutual control of Internet devices after system cloud deployment, support remote control, remote debugging, remote reservation and remote troubleshooting.
- ◆ Support interconnection of everything, can access CAN, I/O contact, IR control, RELAY, RS232, RS485, DMX512, TCP, UDP, API interface (http), SDK development kit docking, database, the system seamlessly connects to the public trust conference management system, support system visualization management.
- ◆ With timeline multi-threaded event editing function
- ◆ Support voice control, voice feedback function
- ◆ Automatic clock synchronization function, can accurately execute user-defined time reservation function, can be accurate to the year, month, day, minute, minute and second.
- ◆ The system can be expanded by wireless or wired, and the single system supports the expansion of 65535 bus devices.
- ◆ The system supports self-backup function of the host, dual-machine backup function, remote cloud backup function, with high security performance.
- ◆ Open and modularized programming mode, support for a variety of controls, easy to learn programming, high flexibility.
- ◆ Support Android, IOS, Windows platform control at the same time.
- ◆ Can be expanded by adding external expansion terminals, flexible and convenient.
- ◆ Configuration of 4-core 1.0GHz multi-threaded multi-core processor, 32-bit embedded processor, 1G memory, 8G Flash memory.
- ◆ The host supports one screen with multiple machines, multiple screens with one machine, multiple screens with multiple machines and other docking methods.
- ◆ 3-way serial port with customizable protocols, using 3.8mm Phoenix terminal interface, according to the need to configure RS232, RS485, DMX512 protocols, the first and third support 24V power output
- ◆ Support 1 channel CAN bus signal management with power supply, baud rate is 125Kbps.
- ◆ Support 3 contact outputs, each of which can support 30V/1A DC, 125V/0.5A AC loads.

- ◆ With 3-way IO digital signal input interface and 1-way IR infrared transmitter control output interface, support for full-band carrier infrared modulation signal transmission
- ◆ With network LAN interface, support for TCP, UDP, API interface (http), SDK development kit docking, database docking
- ◆ Support operation record saving, query function
- ◆ Can monitor the real-time operation status of the controlled equipment, fault feedback.
- ◆ With media streaming transmission function, can simultaneously transmit 8-channel 720P media stream signal.
- ◆ Support audio signal conversion control, through the calculation and analysis of the spectrum to achieve control of peripheral equipment
- ◆ Internal power supply voltage 24V, power consumption <5W

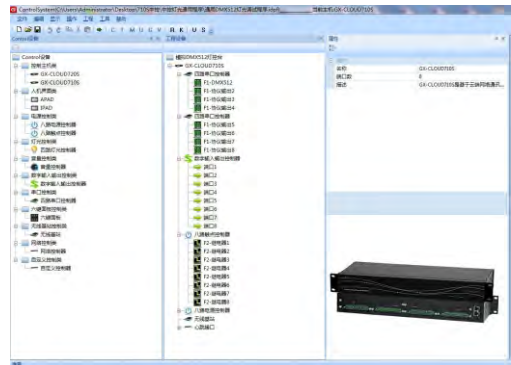
◆ Technical Parameters

Memory	1G RAM, 8G Flash memory
Main Frequency	4-core CPU, 1.0GHz, 32-bit embedded processor
Digital I/O Ports	Default support for 3-way IO, up to 8-way customizable support
Infrared Port	Support 1-way infrared
RS-232 Port	Support 3-way RS-232
RS-485 Port	Support 3-way RS-485
DMX512 Port	Support 3-way DMX512
Contact Port (Optional)	Support 3-way contact
CAN Bus Signal Management	1-way CAN bus signal management with power supply
Power Supply	DC24V/3A, power consumption <5W
Mounting Method	Box rail mounting, 8P specifications
Dimensions (L×W×H)	145×90×63mm



◆ Central Programming Software

- ◆ Open and modular user programming interface allows users to control various devices with highly flexible and user-friendly programming language;
- ◆ The software support C language programming and Chinese programming that imitates human mind
- ◆ Object oriented programming interface, includes all devices involved in the project, Chinese/English interface is optional.
- ◆ Powerful software comes with user-defined functions, macroinstruction application, macro application packaging, precise time line;
- ◆ According to user's demand, the system control function and touch screen's operation interface can be customized, supporting two-touch and three-touch multiple sub-page programming interface with animation effect and other functions.
- ◆ Self-defined time appointment function via touch control panel;
- ◆ Supporting multiple programs switching



◆ 10.1-inch Wall-mounted Touch Panel GX-TP10S2



◆ Product Features

- ◆ Adopt embedded installation design, featuring an elegant, streamlined appearance, exquisite craftsmanship, and easy installation
- ◆ Based on Android independent customized system, embedded central control system control software for smooth control
- ◆ Quad-core 64-bit Cortex-A55, main frequency 2.0GHz CPU, 2G running memory, 16G internal storage, support optional TF card expansion to 128G
- ◆ Adopt 10.1 inch 16:10 full-viewing angle IPS screen, 1280×800 resolution, with anti-light interference function to ensure the accuracy of operation
- ◆ Adopt projected capacitive screen, support 10-point touch, support handwriting and multi-touch gestures, touch speed less than 3ms, accuracy and convenient to use, easy to maintain
- ◆ With 2-way USB interface, 1 of which supports OTG function
- ◆ With 1-way HDMI2.0 output, the default resolution of 1920 × 1080
- ◆ With a 1-way 802.11b/g/n wireless card, support for wireless connection
- ◆ With two 10/100Mbps adaptive network interfaces, can be conveniently connected to the side or back based on the installation site
- ◆ Support 1-way Phoenix terminal RS485 interface, 1-way RJ45 RS485 interface, can be selected according to the installation site side/back connection, engineering installation is more convenient

- ◆ With 1 way RELAY interface, support function expansion
- ◆ Built-in 2×1W hi-fi speaker output, support 3.5mm headphone port output, connected to the sound reinforcement system
- ◆ Support DC 12V and POE power supply to meet a variety of scenarios
- ◆ Support wall-mounted installation, with an optional embedded pre-buried box. It features a rear hidden cable design for a neat and good appearance installation.
- ◆ Multiple project files can be stored on the touch screen at the same time, and different projects can be loaded as needed
- ◆ Open user's secondary programming module, can configure customized buttons in the user interface
- ◆ Support the setting of timer reservation function in the user interface, and the time of the touch screen and the server can be automatically calibrated.
- ◆ Support multi-channel network video picture-in-picture.
- ◆ Support customized voice control and voice feedback function
- ◆ Adopt full bi-directional communication technology, all equipment operation actions can be feedback on the touch screen interface

◆ Technical Parameters

CPU	Rk3568, Quad-core 64-bit Cortex-A55, 2.0GHz
GPU	ARM G52 2EE, support 4K 60fps H.265/H.264/VP9 video decoding
Memory/Storage	2G DDR4 memory (optional 4G), 16GB internal storage (optional 32G), support for TF card, can be expanded to 128G
Display	10.1-inch full-viewing angle IPS screen, resolution: 1280 x 800, brightness: 300cd/m ²
Touch Screen	Projected capacitive 10-point touch
Camera	1/2.9" inch CMOS, maximum pixel 1920*1080, H61°×V35°viewing angle
HDMI Interface	1×HDMI2.0 OUT, default resolution 1920×1080
USB	2×USB 3.0, 1 of which supports OTG function
Networking	1×10/100Mbps adaptive network port (2×RJ45 interface) 1×802.11b/g/n wireless network card
Bluetooth	1×Bluetooth 4.1
Audio Output	1×3.5mm headphone port output. 2×8Ω 1W dual-channel speaker output
Expansion Interface	1×RS-485 (1×RJ45 connector, 1×Phoenix terminal) 1×RELAY interface
Power Supply	DC 12V, POE power supply (IEEE802.3af/at standards)
Power Consumption	Power consumption of the total power consumption ≤ 12W, standby power consumption ≤ 1W
Operating Temperature	-5~45°C
Operating Humidity	30%~85%
Storage Temperature	-10~50°C
Storage Humidity	10%~90%
Dimension	254×164×30mm(W×H×D)
Weight	1.35kg

◆ 10.1-inch Desktop Touch Panel

GX-TP10S3



◆ Product Features

- ◆ Desktop installation, with an elegant, streamlined appearance, exquisite craftsmanship, and easy installation
- ◆ Based on Android independent customized system, embedded central control system control software for smooth control
- ◆ Quad-core 64-bit Cortex-A55, main frequency 2.0GHz CPU, 2G running memory, 16G internal storage, support optional TF card expansion to 128G
- ◆ Adopt 10.1 inch 16:10 full-viewing angle IPS screen, 1280×800 resolution, with anti-light interference function to ensure the accuracy of operation
- ◆ Adopt projected capacitive screen, support 10-point touch, support handwriting and multi-touch gestures, touch speed less than 3ms, accuracy and convenient to use, easy to maintain
- ◆ With 2-way USB interface, 1 of which supports OTG function
- ◆ With 1-way HDMI2.0 output, the default resolution of 1920 × 1080
- ◆ With a 1-way 802.11b/g/n wireless card, support for wireless connection
- ◆ With a 10/100Mbps adaptive network interface
- ◆ Built-in 2×2W high-fidelity speaker output, support 3.5mm headphone port output, connect to the sound reinforcement system
- ◆ Support DC 12V and POE power supply to meet a variety of scenarios.
- ◆ Multiple project files can be stored on the touch screen at the same time, and different projects can be loaded as needed
- ◆ Open user's secondary programming module, can configure customized buttons in the user interface
- ◆ Support the setting of timer reservation function in the user interface, and the time of the touch screen and the server can be automatically calibrated.
- ◆ Support multi-channel network video picture-in-picture.
- ◆ Support customized voice control and voice feedback function
- ◆ Adopt full bi-directional communication technology, all equipment operation actions can be feedback on the touch screen interface

◆ Technical Parameters

CPU	Rk3568, Quad-core 64-bit Cortex-A55, 2.0GHz
GPU	ARM G52 2EE, support 4K 60fps H.265/H.264/VP9 video decoding
Memory	2G DDR4 memory (4G optional)
Storage	16GB internal storage (optional 32G), support TF card, expandable to 128G
Display	10.1-inch full-viewing angle IPS screen, resolution: 1280 x 800, brightness: 300cd/m ²
Touch Screen	Projected capacitive 10-point touch
Camera	1/5" inch CMOS, maximum pixel 1616×1232, 76° viewing angle
HDMI	1×HDMI2.0 OUT, default resolution 1920×1080
USB	2×USB 3.0, 1 of which supports OTG function
Networking	1×10/100Mbps adaptive network port; 1×802.11b/g/n wireless network card
Bluetooth	1×Bluetooth 4.1
Audio Output	1×3.5mm headphone port output. 2×8Ω 2W dual-channel speaker output

Power Supply	DC 12V 2.6A, POE power supply (IEEE802.3af/at standard)	Operating Temperature	-5~45°C
Power Consumption	Power consumption of the total power consumption ≤ 12W, standby power consumption ≤ 1W	Operating Humidity	30%~85%
		Storage Temperature	-10~50°C
		Storage Humidity	10%~90%
		Overall Dimension	254×164×80 mm(W×H×D)
		Weight	1.2 kg

Touch Control Wall Panel GX-PANEL70D /GX-PANEL40D



GX-PANEL70D



GX-PANEL40D

Product Features

- ◆ 86-box wall installation design, simple engineering installation, with 7-inch/4-inch 65K color LCD display, capacitive touch screen control, with Chinese and English interfaces, easy and smooth to operate
- ◆ With RS485 communication interface and WIFI communication method (optional)
- ◆ 5-30V wide voltage power supply, with extremely low operating power consumption of 1W
- ◆ Using 400M SOC processor, no operating system, it operates after power-on
- ◆ Used with central control system and visual media interactive system
- ◆ Supports multi-page display, supports access to the central control system, visual media interaction system, and intelligent conference management platform to realize equipment status monitoring and equipment control (power on and off)

Technical Parameters

Model	GX-PANEL70D	GX-PANEL40D
Screen Size	7 inches	4 inches
Resolution	1024×600	480×480
Color	65K colors, 16-bit RGB	65K colors, 16-bit RGB
Display Type	TFT LCD	TFT LCD
Brightness	220cd/m ²	250cd/m ²
Backlight Tube	LED	LED
Backlight Life (average)	>20,000 hours	>20,000 hours
Contrast Ratio	200:1	800:1
Viewing Angle	55/55/55/30	80/80/80/80
Installation	National standard 86 bottom box	National standard 86 bottom box
Communication Interface	RS485, baud rate 1200~115200bps	RS485, baud rate 1200~115200bps
Touch	Capacitive touch screen type	Capacitive touch screen type
Number of touches	Unlimited	Unlimited
Power Consumption	Dormant: 0.4W; Darkest without speaker: 1.0W; Brightest without speaker: 2.6W	Dormant: 0.4W; Darkest without speaker: 1.5W; Brightest without speaker: 2.4W
Voltage Input	9~36V	9~36V
Operating Temperature	0~40°C	0~40°C
Storage Temperature	-20~70°C	-20~70°C
Product Size (W×H×D)	184.0×118.0×23.2mm	90.7×90.7×27.9mm
Net Weight	200g	90g

◆ Voice Control Panel **GX-PANEL10D**



◆ Product Features

- ◆ White 86 panel design, compact and lightweight, suitable for installation in a variety of scenarios
- ◆ Adopting 32bit RISC core, running frequency 240M
- ◆ High-speed SRAM storage chip, FLASH up to 2MB
- ◆ Built-in voice database, no need to network, support offline intelligent voice recognition
- ◆ Advanced AI voice algorithm and high-precision pickup module, recognition rate up to 99% or more
- ◆ Supports customized wake-up words and voice control commands, up to 150 editable voice control commands, and supports expansion
- ◆ Support customized voice response
- ◆ Through the voice speech, realize the device control, task execution and other operations.
Functions include: power control, lighting control, environment control, microphone control, audio control, video control, splicing screen control, camera control, recording and broadcasting control, same-screen control and others
- ◆ Used with GONSIN center control system and conference management system

◆ Technical Parameters

Processor	32bit RISC core running at 240MHz
Storage	2MB FLASH
Recognition Rate	Up to 99
Speech Phrase	150 (Expandable)
Speaker	3W mono class AB amplifier
Microphone	Electret microphone
Communication	RS485
Interface	RS485 interface (Phoenix) × 1 DC power supply interface (Phoenix) × 1 Burn-in interface×1
Mounting method	National standard 86 bottom box
Voltage Input	DC 12V 1A
Dimension	86×86×15mm
Weight	100g
Working Temperature	-20~85℃

Multi-function Expansion Terminal (DIN-rail)

GX-MUL710S



Product Features

- ◆ With digital working status indicator, network connection status indicator, power status indicator and ID display window for real-time display of device status and current device ID
- ◆ With ID setup button, wireless configuration button, network cable interface, power input interface, easy to use
- ◆ With 2 groups of phoenix terminal, can be customized protocol bidirectional communication serial port, according to the need to configure into RS-232, RS-485, DMX512 protocol, support baud rate programmable
- ◆ With 4-way IO, infrared transmission interface
- ◆ 1 CAN bus interface
- ◆ Communicate with the central control host through TCP/IP to realize the serial port expansion and backup function of the central control host, which makes the project construction more flexible

Technical Parameters

Protocol Interface	2-way full-featured protocol port, supporting RS232, RS485, DMX512 Supports 1200-256000 baud rate, 1 CAN bus protocol port, 125Kbps
Infrared Interface	4-way infrared, support full-range carrier infrared (20K-80K)
Wireless Protocol	2.4G/IEEE 802.15.4
Wireless Antenna	External Antenna
Antenna Encryption Algorithm	128-bit AES
LAN Interface	10/100M Adaptive
Network IP	Support auto/manual
Device IP	Key manual setting
Input Power	DC24V/3A
Power Consumption	2W
Product Size	106×90×58mm
Installation	Rail mounting

◆ Multi-function Protocol Expansion Terminal

GX-MUL711S



◆ Product Features

- ◆ With working status indicator, network connection status indicator, power status indicator and ID display window for real-time display of device status and the current device ID
- ◆ With ID setup button, network cable interface, power input interface, easy to use.
- ◆ With 4 groups of Phoenix terminals, can be customized protocol bidirectional communication serial port, according to the need to configure into RS-232, RS-485, DMX512 protocols
- ◆ With 4 groups of Phoenix terminals, unidirectional RS232 protocol send serial port, support baud rate, data bits, stop bits, parity bit free settings
- ◆ With 3-way input IO and 1-way infrared transmission IR interface
- ◆ Communicate with the central control host through TCP/IP to realize the expansion of the serial port of the central control host, which makes the project construction more flexible.
- ◆ Support 2-bit hexadecimal digital ID adjustment, single system support 255 units cascade, the highest capacity of up to 65535 units; the highest data flow up to 10M/S
- ◆ Support hot-plug, internal and external interfaces can resist 20KV electrostatic shock
- ◆ Supply voltage 12V, static power consumption 0.5W

◆ Technical Parameters

Device ID	01-FF adjustable
Protocol Interface	4-way full-featured protocol port, support RS232, RS485, DMX512, support for 1200-256000 a variety of commonly used baud rate 4-way pure transmit protocol port, support RS232, support for 1200-256000 a variety of commonly used baud rate
IO Interface	3 input IOs
IR Interface	1 channel infrared transmission
LAN Interface	10M adaptive
Network IP	Auto/Manual
Input Power	DC12-24V
ID Setting Method	Hexadecimal 2-digit user ID setting method
Interface Characteristics	First-class industrial standard, can communicate with the host through TCP/IP, support wired connection, support hot-plug Anti-shock, anti-surge, anti-static voltage, anti-interference
Product Size (L×W×H)	210×105×29mm
Power Consumption	Approx. 0.8W

Protocol Control Terminal

GX-NET710S



Product Features

- ◆ With working status indicator and network connection and status indicator, for real-time display of equipment status
- ◆ With ID setting buttons, network cable interface, power input interface, easy to use.
- ◆ With 4 groups of Phoenix terminal, can customize the protocol of the serial port, according to the need to configure into RS-232, RS-485, RS-422, DMX512 protocols
- ◆ Communicate with the central control host through TCP/IP to realize the expansion of the serial port of the central control host, and make the project construction more flexible.
- ◆ Maximum data flow up to 10M/S
- ◆ Support hot-plug, internal and external interfaces can resist 20KV electrostatic shock.
- ◆ Internal power supply voltage 24V, static power consumption of only 0.5W

Technical Parameters

Input And Output Ports	4-way, supports configuration to RS-232, RS-485, RS-422, DMX512 protocols
RS-232 Mode	4-way, bidirectional communication, baud rate 1200~115200 full range
RS-485 Mode	4-way half-duplex communication, baud rate 1200~115200 full range (half-duplex mode)
DMX512 Working Mode	4-way, multi-channel control, baud rate 250,000, 512 dimming channels
ID Setting Mode	Hexadecimal 3-digit user ID setting mode
Interface Characteristics	First-class industrial standard, can communicate with host via TCP/IP Support wired connection, hot-plug, anti-shock, anti-surge, anti-static voltage, anti-surge, anti-static voltage, anti-interference
Size (L×W×H)	110×144×20mm
Power Supply	DC24V
Standby Power Consumption	0.5W

CAN Bus Terminal

GX-CAN710S



Product Features

- ◆ With working status indicator and network connection and status indicator, for real-time display of equipment status
- ◆ With ID setting buttons, network cable interface, power input interface, easy to use
- ◆ With 4 groups of phoenix terminals, supporting 4-channel CAN bus signal management with power supply, a single terminal can connect up to 880 terminals
- ◆ Communicate with the central control host through TCP/IP to realize CAN bus expansion of the central control host
- ◆ Maximum data flow up to 10M/S
- ◆ Supports hot-plug, internal and external interfaces can withstand 20KV electrostatic shock
- ◆ Internal power supply voltage 24V, static power consumption of only 0.5W

Technical Parameters

CAN Bus Port	4-way
Single-way Capacities	110 units
Output Power	72W
Supply Voltage	24V
Baud Rate	500K bps/S
ID Setting Method	Hexadecimal 3-digit user ID setting method
Interface Characteristics	First-class industrial standard, can communicate with host computer through TCP/IP Communication, support wired connection, support hot-plug Anti-shock, anti-surge, anti-static voltage, anti-interference
Standby Power Consumption	0.5W

Digital Input/Output Terminal

GX-IO710S



Product Features

- ◆ With working status indicator and network connection and status indicator, for real-time display of equipment status
- ◆ With ID setup button, network cable interface, power input interface, easy to use
- ◆ With 8 groups of Phoenix terminals, customizable IO input, output and infrared output
- ◆ I/O inputs are equipped with dithering processing, which can automatically filter level fluctuations of less than 20ms.
- ◆ Support infrared modulated signal transmission over a full range of carriers.
- ◆ Communicate with the central control host via TCP/IP to realize the expansion of IO and IR ports of the central control host, which makes the project construction more flexible
- ◆ Maximum data flow up to 10M/S, data command processing capacity up to 72 million times per second
- ◆ Supports hot-plugging, internal and external interfaces can resist 20KV electrostatic shock
- ◆ Internal power supply voltage of 24V, static power consumption of only 0.5W

Technical Parameters

Input And Output Ports	8-way (interface multiplexing)
Infrared Output Mode	8-way, support 10kHz~60kHz infrared carrier band (interface multiplexing)
Digital Input Mode	8-way, digital input voltage 0V/5V
Digital Output Mode	8-way, digital output voltage 0V/5V
ID Setting Mode	Hexadecimal 3-digit user ID setting method
Interface Characteristics	First-class industrial standards, can communicate with the host through TCP/IP, support wired connection, support hot-plug, anti-shock, anti-surge, anti-static voltage, anti-interference
Size (L×W×H)	110×144×20mm
Power Supply	DC24V
Standby Power Consumption	0.5W

◆ Contact Terminal

GX-KM704S



◆ Product Features

- ◆ With working status indicator and network connection and status indicator, for real-time display of equipment status
- ◆ With ID setup button, network cable interface, power input interface, easy to use
- ◆ With 8 groups of Phoenix terminals, support 8-way contact control, each can support 30V/1A DC, 125V/0.5A AC
- ◆ Support the control of AC0.5A/125V or DC1A/30V loads of all kinds of electrical equipment related to the switch, to achieve a small current and low voltage to drive high-current and high-voltage loads
- ◆ Contact mechanical life 1.1 million times (light load), contact electrical life 110,000 times (standard load)
- ◆ Communicate with the central control host through TCP/IP to realize the expansion of the RELAY contact port of the central control host
- ◆ Support hot-plug, internal and external interfaces can resist 20KV electrostatic shock
- ◆ Internal power supply voltage 24V, static power consumption 0.5W

◆ Technical Parameters

Output Ports	8-way
Single Load	Each circuit can support 30V/1A DC, 125V/0.5A AC
Contact Mechanical Life	1.1 million times (light load)
Contact Electrical Life	110,000 times (standard load)
ID Setting Method	Hexadecimal 3-digit user ID setting method
Interface Characteristics	First-class industrial standards, can communicate with the host through TCP/IP, support wired connection, support hot-plug, anti-shock, anti-surge, anti-static voltage, anti-interference
Dimensions (L×W×H)	110×144×20mm
Power Supply	DC24V
Standby Power Consumption	0.5W

Power Manager GX-P708S/GX-P708S6



It is applied to control the lights power and other devices' power in various conference venues, supporting power input and output by strong current or weak current. With rack-mount design, it can be installed in 19 inches standard cabinet.

Product Features

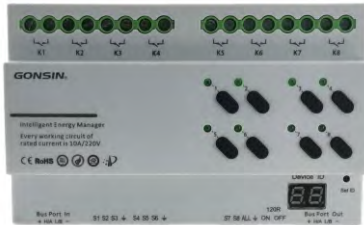
- ◆ New rack-mount design, can be installed in 19-inch standard cabinets
- ◆ The host panel is equipped with CAN status indicator, serial communication indicator and control status indicator, which can visualize the working status of the equipment.
- ◆ 8 high-current relays with normally open/closed contacts, each single relay has a pair of normally open/closed contacts.
- ◆ Use with the central control system
- ◆ Support the host double-open function, with manual forced switch, can be detached from the host manual control
- ◆ With any change of network ID setting function
- ◆ Support CAN bus communication and manual control of each channel switch of the two control modes (GX-P708S model)
- ◆ With TCP/IP communication host with CAN bus, RS232, TCP/IP, manual control mode, support for docking the public trust conference management system, support for system visualization management (GX-P708S6 model)
- ◆ Built-in power management embedded software, can realize parameter setting, timing programming, real-time control of equipment switching, delay, real-time monitoring channel voltage, current function

Technical Parameters

Single way power	≤2200W
Three sets of LED power per channel	≤360W
4-10 sets of LED power per channel	≤60W
More than 10 sets of LED power per channel	≤18W
Total power	≤16000W
Communication Methods	GX-P708S:Manual,CANbus GX-P708S6:Manual,CANbus,RS232,TCP/IP
Control Methods	Bus/Manual
Power Supply	24V DC bus power
Relay channel number	8 channels
Contact Structure	A pair of normally open, normally closed contacts
Installation	Rack-mounted
Dimensions (L×W×H)	485×280×44mm
Weight	3.4Kg

Power Management Module (DIN Rail)

GX-P708S1/ GX-P708S2/ GX-P708S3/ GX-P708S4



It is applied to the control of switch variables such as power supply and ambient lighting in various occasions. It allows input and output of strong and weak currents. It has a rail design and can be installed in a standard distribution box. RS485 or CAN communication mode can be selected, and multiple groups of state storage and restoration functions are available at the same time. It is suitable for equipment power supply system under central control management to realize flexible management of power control.

Product Features

- ◆ New DIN-rail design, can be installed in the standard distribution box, the panel comes with a signal feedback information system, which can intuitively indicate the working status of the equipment
- ◆ Used with central control system
- ◆ 8-way independent power control outputs, maximum current of 10A in a single way
- ◆ Support CAN bus control mode (GX-P708S1/GX-P708S3)
- ◆ Support RS485 bus control mode (GX-P708S2/GX-P708S4)
- ◆ Support local key and IO communication control mode
- ◆ Support access to the central control system, visualized distributed media interactive system, intelligent conference management platform, to achieve channel status monitoring, channel function control
- ◆ Support 8-way independent current detection (GX-P708S3/ GX-P708S4)
- ◆ Supports multi-group status saving and recovery function
- ◆ Built-in anti-surge relay, single-way transient peak power up to 26400W

Technical Parameters

Control methods	GX-P708S1/GX-P708S3: Button/IO control, CAN (baud rate 125kbps) GX-P708S2/GX-P708S4: Button/IO control, RS485 (baud rate 9600bps)
Device ID	Manual adjustment
Single way maximum power	10A/220VAC
Maximum anti-surge current	120A/20ms (single channel transient peak power 26400W)
Power supply	Bus DC12V ~ 24V
Power consumption	About 4.8w (fully open), 0.3w (fully closed)
Installation	Distribution box rail installation, 8p
Dimensions (L×W×H)	145×90×63 mm

LED Dimming Processor Module(DIN Rail)

GX-D704S1/GX-D704S2



LED dimming control used in various occasions, supporting 0-10V control dimming, with rail design, and can be installed in standard distribution box. RS485 or can communication mode can be selected, and multiple groups of state saving and recovery functions are available. It is suitable for LED dimming under central control management and other application scenarios supporting 0-10V control to realize various intelligent controls.

Product Features

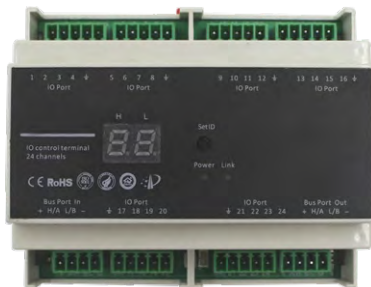
- ◆ New miniaturized and DIN-rail design, can be installed in the standard distribution box, the front panel with ID display and work instructions, buttons and indicators, can intuitively display the working status of the device
- ◆ 4-way 0-10V output, support 4-channel simultaneous or independent adjustment
- ◆ Support CAN bus control mode (GX-D704S1)
- ◆ Support RS485 bus control mode (GX-D704S2)
- ◆ Support to use with 0-10V control mode of lights
- ◆ Support to use with central control system
- ◆ Support key 6-level dimming, 4 groups of LED brightness dimming
- ◆ Support channel status feedback function, support real-time query channel status
- ◆ Device ID can be set manually, support for multi-device cascade
- ◆ Support environmental illumination preset and call function

Technical Parameters

Output voltage	0-10V, single channel supports simultaneous control of 8 lights
Output channel	4 channels
Control mode	GX-D704S1: Button, CAN (baud rate 125kbps) GX-D704S2: Button, RS485 (Baud rate 9600bps)
Panel key control	6-level dimming
Device ID	Manually adjustable
Single channel maximum output current	5mA
Power supply	Bus DC24V
Power consumption	<1W
Installation	Distribution box rail installation, 4P
Dimensions (L×W×H)	72×90×63mm

◆ I/O Control Module (DIN Rail)

GX-IO724S1/GX-IO724S2



Applied to various occasions that require I/O input or output signal control, it supports 24-channel IO input or output signals, and the DIN-rail design can be installed in the standard power box. RS485 or CAN communication can be selected, and at the same time, it is equipped with functions such as multi-group state saving and restoration, which can be used together with the central control unit to realize all kinds of intelligent control.

◆ Product Features

- ◆ Use with central control system
- ◆ Support CAN bus control mode (GX-IO724S1)
- ◆ Support RS485 bus control method (GX-IO724S2)
- ◆ 24 configurable input/output ports
- ◆ Device ID can be set

◆ Technical Parameters

Control Method	CAN (baud rate 125kbps)/RS485 (baud rate 9600bps)
IO channel	24-way (input/output available)
Output Driver	3mA
Port Level	TTL
Device ID	2-bit manually adjustable
Power Supply	Bus 24V power supply
Power Consumption	<1.5W
Installation	Distribution box rail installation, 6P specification
Dimension (L×W×H)	106×90×58 mm

Sensor GX-SEN101



Technical Parameters

Sensor	Built-in temperature and humidity detection, can be connected to external sensing probe
Installation Method	Wall-mounted
Communication Method	RS-485
Response Time	≤15S (1m/s wind speed)
Temperature Range	-40-80℃
Humidity Range	5-95%RH
Temperature Accuracy	0.1℃
Humidity Accuracy	0.1%RH
Operating Pressure Range	0.9-1.1atm
Display	65×50mm LCD
Maximum Power Consumption	0.4W
Dimension	86×86×26mm



Sensor GX-SEN102



Technical Parameters

Sensor	Built-in temperature, humidity and luminosity detection
Installation method	Ceiling
Communication	RS-485 (Modbus protocol)
Temperature Range	-40-80°C
Humidity Range	0-100%RH (25)
Temperature Accuracy	0.5
Humidity Accuracy	3%RH
Light Range	0-65535Lux
Lighting Accuracy	5% (25)
Maximum Power Consumption	0.4W
Material	ABS
Dimension	86×86×26mm



Sensor GX-SEN103



Technical Parameters

Sensor	PM2.5/10
Installation Method	Ceiling
Communication Method	RS-485
Measurement Method	Dual Laser Measurement
PM2.5/10 Measuring Range	0-1000ug/m3
PM2.5/10 Measuring Accuracy	≤ ±10% of reading (25°C)
Response Time	Generally less than 15 seconds
Operating Temperature	-30-50°C (-20-40°C continuous)
Operating Humidity Environment	0-100%RH (15-95%RH)
Power Supply	DC12V-24V
Power Consumption	≤1.35W (@12V DC, 25)
Dimension	110×85×44mm



Sensor GX-SEN104



Product Features

- ◆ Adopting international high-quality components, built-in imported large-area window ultra-high sensitivity probes and intelligent software algorithms to provide stable and reliable detection performance
- ◆ With delayed working mode and system working mode, different working modes correspond to the induction signal LED light up time, to meet the needs of different scenarios
- ◆ With a circular detection range of 6 to 8 meters in diameter
- ◆ When there is enough light in the room, the sensor stops signal output and remains normally open, effectively saving energy
- ◆ Used with the central control system

Technical Parameters

Sensor	Built-in infrared human presence detection
Installation Height	2.4m~3.0m
Detection Range	Diameter 6~8m
Sensor Technology	Passive mobile infrared technology
Signal Output Method	Dry contact signal output (switching)
Solid State Relay	Soild state, 50mA, 30V
Delay Mode	5 seconds, 1 minute, 5 minutes, 10 minutes (optional)
System Operating Mode	Dry contact signal output (1 sec)
Light Sensitivity	10LUX, 60LUX, 160LUX, 320LUX (four-level optional)
Adjustable Sensitivity	IR sensitivity adjustable in four levels
Housing Material	ABS material
Power Supply	12~24V wide voltage
Installation	Ceiling
Dimension	Ø97×35mm
Working Temperature	-10 ~55
Accessory	Screw

HD Modular Matrix

GONSIN Modular Matrix supports signals conversion in various interface formats, including HDMI, DVI, VGA, VIDEO, YPbPr, SDI and optical fiber. Leading full-digital signal processing technology without distortion ensures the best image is sent to the display side. The flexible and changeable plug-in modular structure design perfectly solves the compatibility problem of too many signal sources and coexistence of digital and analog signals in video projects. Each signal card supports 4-way signal input or output, saving the investment costs and reducing the difficulty of construction. It is convenient to expand upgrade and maintenance.

HD Modular Matrix Switcher

GX-MMD08-D/MMD16-D/MMD32-D/MMD64-D

GX-MMD08-D



GX-MMD16-D



GX-MMD32-D



GX-MMD64-D



Product Features

- ◆ Passed IEC 60914 international standard certification
- ◆ Industrialized standard chassis and modular design, according to the actual needs of input/output signal cards can be selected
- ◆ Front panel with power indicator, IR receiver, LCD display, input/output channel switching buttons, MENU function buttons.
- ◆ With 4/8/16/32 card slots, support for inserting 2/4/8/16 signal input cards and 2/4/8/16 signal output cards.
- ◆ RJ45 interface for TCP/IP network port control
- ◆ With 2 DB9 serial port holder, and control equipment RS232 port connection
- ◆ Compatible with HDMI, DVI, VGA, AV, SDI, HDBaseT, OpticalFiber (1080P fiber) and other 1080P signals seamless switching card;
- ◆ Compatible with HDMI, HDBaseT, Optical Fiber (4K x 2K fiber optic) and other 4K signal switching boards.
- ◆ Embedded hardware architecture design, the system is stable and reliable, seamless switching without black screen, flashing screen, no time delay
- ◆ Bus switching technology, each signal using a separate channel for transmission, to ensure that all signals and images of real-time display
- ◆ Host with frequency multiplier technology, the image signal multiplier scaling, frequency enhancement display
- ◆ Support OSD customized character overlay screen display function.
- ◆ Support the current equipment input and output channel status query function.
- ◆ Support screen splicing function (1×1-8×8 equal ratio screen)
- ◆ Support panel key lock function to prevent misoperation
- ◆ Support not less than 10 scenes save and call function, support group cut function.
- ◆ Support HDMI1.4a standard, the highest support for 4K resolution input and output switching, compatible with HDCP
- ◆ Support built-in EDID management and manual EDID learning function.
- ◆ Support power failure memory, audio and video synchronization function
- ◆ Matrix host and signal to meet not less than 7 × 24 hours without power failure-free operation
- ◆ With RS232, TCP / IP, IR and key control a total of four control modes, the use of flexible, easy to use with a variety of control devices with the use of
- ◆ The system seamlessly connects to GONSIN conference management system, supporting system visualization management.
- ◆ The system seamlessly connects to the GONSIN discussion system and supports automatic switching of camera tracking.

Technical Parameters

Model	GX-MMD08-D	GX-MMD16-D	GX-MMD32-D	GX-MMD64-D
Chassis structure	Pluggable signal card			
Slots for cards	Input*2 /output *2	Input*4/output*4	Input*8/output*8	Input*16/output*16
Type of signal	1080P signal: HDMI,DVI,VGA,AV,SDI,HDBaseT,Optical Fiber 4K×2K signal: HDMI, HDBaseT, Optical Fiber			
Resolution	According to the type of input/output card, it can support 36 resolutions such as 1920×1200, 1080P, 1080I, 1366×768, 720P, 576i, 480i, etc.			
control modes	RS232,TCP/IP,IR,button control			
Front panel	button control, LCD screen, IR Receiving window			
Power	220V AC 50/60Hz			
Power Consumption	23W	31W	60W	116W
Relative humidity	10%~90%			
Working temperature	0-50℃			
Dimension of chassis (L×W×H)	2U without hanger: 437x318x88mm with hanger: 483x318x88mm	3U without hanger: 437x317x133mm with hanger: 483x317x133mm	5U without hanger: 437x320x222mm with hanger: 483x320x222mm	10U without hanger: 437x317x444mm with hanger: 483x317x444mm

◆ HD Modular Matrix Switcher

GX-MMD96-D/MMD144-D/MMD160-D



GX-MMD96-D



GX-MMD144-D



GX-MMD160-D

◆ Product Features

- ◆ In compliance with IEC60914 international standard
- ◆ Industrialized standard chassis design
- ◆ Modular design, input/output signal card can be selected according to actual needs
- ◆ Flush-mounting hardware architecture design, the system is stable and reliable, seamless switching, without black screen and splash screen, no delay
- ◆ Compatible with 1080P seamless switching cards for HDMI, DVI, VGA, AV, SDI, HDBaseT, Optical Fiber, etc.
- ◆ Compatible with 4K×2K signal switching cards for HDMI, HDBaseT, Optical Fiber
- ◆ Bus switching technology, each signal is transmitted through a separate channel to ensure the real-time display of all signal images.
- ◆ The switcher is with frequency multiplier and upscaling technology to scale or enhance the image signals
- ◆ Support OSD custom character overlay screen display function
- ◆ Support query function for input and output channel status of current device
- ◆ Support image mosaic function (1×1~8×8 equal scale image)
- ◆ There are 4 kinds of control modes including RS232, TCP/IP, IR and button control. It is flexible and convenient to use.
- ◆ Support locking function of panel button to prevent misoperation
- ◆ Support no less than 10 scene save and recall function, and support group cutting function
- ◆ Support HDMI 1.4a standard, up to 4K resolution input/output switching, HDCP compliant
- ◆ Supports embedded EDID management and manual EDID learning function
- ◆ Redundant power supply design, support for power failure alarm function
- ◆ Switcher and signal can run no less than 7 × 24 hours with continuous power and failure-free operation

◆ Technical Parameters

Model	GX-MMD96-D	GX-MMD144-D	GX-MMD160-D
Chassis structure	Pluggable signal card		
Slots for cards	Input*24/output*24	Input*36/output*36	Input*40/output*40
Type of signal	1080P signal: HDMI,DVI,VGA,AV,SDI,HDBaseT,Optical Fiber 4K×2K signal: HDMI,HDBaseT,Optical Fibe		
Resolution	According to the type of input and output card, support 36 types of resolution:1920×1200,1080P,1080I,1366×768,720P,576i,480i		
control modes	RS232,TCP/IP,IR,button control		
Front panel	button control, LCD screen, IR Receiving window		
Power	220V AC 50/60Hz		
Power Consumption	220W	248W	310W
Relative humidity	10%~90%		
Working temperature	0-50℃		
Dimension of chassis (L×W×H)	20U without hanger: 437x450x888mm with hanger: 483x450x888mm	28U without hanger: 437x448x1244mm with hanger: 483x448x1244mm	32U without hanger: 437×448×1400mm with hanger: 483×448×1400mm



◆ 2-way SDI & 2-way HDMI Seamless Input/Output Card



◆ Product Features

GX-SDI2I&HDMI2I-D

- ◆ 2 channels for HDMI input, 2 channels for audio input, 2 channels for SDI input, 2 channels for SDI loop output
- ◆ Supports resolution selection, and it is up to 1920x1080P@60Hz
Supports HDMI 1.3 and HDCP 1.3, compatible with DVI signal
- ◆ HDMI input audio defaults to embedded audio input, supporting embedded analog audio
- ◆ Automatically recognize SDI, HD-SDI or 3G-SDI signal format, with upscaling function
- ◆ Use coaxial cable for SDI output, support 70m-100m (1080P signal) transmission distance
- ◆ Supports video upscaling, converting output source to 1080P or 1920x1200
- ◆ Input signal card with character overlay function

GX-SDI2O&HDMI2O-D

- ◆ 2 channels for HDMI output, 2 channels for audio output, 2 channels for SDI output, 2 channels for SDI loop output
- ◆ Supports resolution selection, and it is up to 1920x1080P@60Hz
- ◆ Supports HDMI 1.3 and HDCP 1.3, compatible with DVI signal
- ◆ HDMI output de-embedded audio is off by default and can be turned on by command
- ◆ Automatically recognize SDI, HD-SDI or 3G-SDI signal format, with upscaling function
- ◆ Use coaxial cable for SDI output, support 70m-100m (1080P signal) transmission distance
- ◆ Supports video upscaling, converting output source to 1080P or 1920x1200

◆ Technical Parameters

Product	2-way SDI & 2-way HDMI seamless input card	2-way SDI & 2-way HDMI seamless output card
Model	GX-SDI2I&HDMI2I-D	GX-SDI2O&HDMI2O-D
HDMI		
Type of signal	HDMI input×2, compatible with DVI	HDMI output×2, compatible with DVI
Interface	HDMI Type A	
Color Depth	8 & 10 & 12 bit	8bit
Bandwidth	6.75Gpbs	
Audio Signal Format	Embedded audio support PCM,Dobly Digital,DTS, DTS-HD format, external audio support PCM format	
Standard	HDMI1.3	
EDID management	Support EDID learning function	
Transmission Distance	1080P≤10m(select high quality wire)	
SDI		
Type of signal	3G-SDI, compatible with HD-SDI,SDI (with SDI loop output)	
Connector	BNC	
Input/Output Level	T.M.D.S 2.9V~3.3V	
Input/Output Impedance	75 Ohm	
Bandwidth	6.75Gpbs	
Maximum resolution	1080P@60Hz	
Color depth	8&10& 12bit	
Transmission Distance	1080P≤100m (select high quality wire)	
Audio Signal		
Type of signal	Analog audio signal input×4	Analog audio signal output×4
Connector	3-pin phoenix contact	
Audio Input Impedance	>10K Ohm	-
Input Impedance	75 Ohm	
Frequency Response	20Hz~20K Hz	
Transmission Distance	≤10m(select high quality wire)	
General		
Gain	0dB	
Crosstalk	<-50dB@5MHz	
Switching Rate	200ns (Maximum)	
Power consumption	13W	12W
Working temperature	0°C~50°C	
Relative humidity	10%~90%	

4-way HDMI Seamless Input/Output Card

Product Features

GX-HDMI4I-D

- ◆ 4 channels for HDMI input, 4 channels for analog audio input
- ◆ Supports resolution selection, and it is up to 1920x1080P@60Hz
- ◆ Supports HDMI 1.3 and HDCP 1.3, compatible with DVI signal
- ◆ HDMI input audio defaults to embedded audio input, supporting embedded analog audio
- ◆ Supports video upscaling, converting output source to 1080P or 1920x1200
- ◆ Input signal card with character overlay function

GX-HDMI4O-D

- ◆ 4 channels for HDMI output, 4 channels for analog audio output
- ◆ Supports resolution selection, and it is up to 1920x1080P@60Hz
- ◆ Supports HDMI 1.3 and HDCP 1.3, compatible with DVI signal
- ◆ Supports video upscaling, converting output source to 1080P or 1920x1200



Technical Parameters

Product	4-way HDMI seamless input card	4-way HDMI seamless output card
Model	GX-HDMI4I-D	GX-HDMI4O-D
HDMI		
Type of signal	HDMI input×4, compatible with DVI	HDMI output×4, compatible with DVI
Interface	HDMI Type A	
Color Depth	8 & 10 & 12 bit	8bit
Maximum resolution	1080P@60Hz	
Bandwidth	6.75Gpbs	
Audio Signal Format	Embedded audio support PCM,Dobly Digital,DTS, DTS-HD format, external audio support PCM format	
Standard	HDMI1.3	
EDID management	Support EDID learning function	
Transmission Distance	≤10m(select high quality wire)	
Audio Signal		
Type of signal	Analog audio signal input×4	Analog audio signal output×4
Connector	3-pin phoenix contact	
Audio Input Impedance	>10K Ohm	-
Input Impedance	75 Ohm	
Frequency Response	20Hz~20K Hz	
Transmission Distance	≤10m(select high quality wire)	
General		
Gain	0dB	
Crosstalk	<-50dB@5MHz	
Switching Rate	200ns (Maximum)	
Power consumption	7.1W	7.9W
Working temperature	0°C~50°C	
Relative humidity	10%~90%	

4-way DVI Seamless Input/Output Card

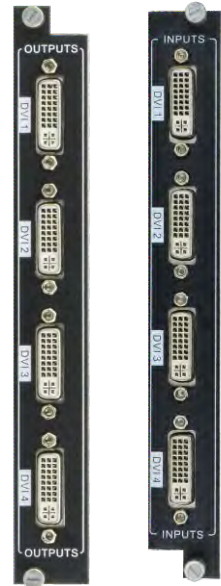
Product Features

GX-DVI4I-D

- ◆ 4 channels for seamless DVI input
- ◆ Supports resolution selection, and it is up to 1920x1080P@60Hz
- ◆ Automatically recognize DVI,HDMI,VGA,YPbPr and CVBS signal format
- ◆ Supports video upscaling, converting output source to 1080P or 1920x1200
- ◆ Input signal card with character overlay function

GX-DVI4O-D

- ◆ 4 channels for seamless DVI output
- ◆ Supports resolution selection, and it is up to 1920x1080P@60Hz
- ◆ Automatically recognize DVI,HDMI,VGA,YPbPr and CVBS signal format
- ◆ Supports video upscaling, converting output source to 1080P or 1920x1200



Technical Parameters

Product	4-way DVI seamless input card	4-way DVI seamless output card
Model	GX-DVI4I-D	GX-DVI4O-D
Type of signal	4 channels for DVI signal, compatible with HDMI, VGA, CVBS and YPbPr	
Connector	DVI-I female	
Input Level	T.M.D.S 2.9V~3.3V	
Input Impedance	75 Ohm	
Transmission Distance	≤10m(select high quality wire)	
Bandwidth	340MHz(10.2Gbit/s)	
Max Time-delay	5nS(±1nS)	
Date type	8bit	
Video Signal Format	Embedded audio support PCM,Dobly Digital,DTS, DTS-HD format, external audio support PCM format	
Audio sampling rate	32K, 44.1K, 48K, 88.2K, 96K, 176.4K,192K	
EDID and DDC	Supports Extended Display Identification Data (EDID) and Display Data Channel (DDC) data using DVI and HDMI standards	
HDCP	Compliant with HDCP using DVI and HDMI 1.3 standards	
General		
Gain	0dB	
Crosstalk	< -50dB@5MHz	
Switching Rate	200ns (Maximum)	
Power consumption	10W	6W
Working temperature	0°C~50°C	
Relative humidity	10%~90%	
Note: When connecting HDMI, VGA, YPbPr and CVBS signals, special connection lines are needed.		

4-way VGA Seamless Input/Output Card

Product Features

GX-VGA4I-D

- ◆ 4 channels for VGA input, 4 channels for analog audio signal input
- ◆ Supports resolution selection, and it is up to 1920x1080P@60Hz
- ◆ Manually select VGA (RGBHV), YPbPr, S-VIDEO or C-VIDEO signal format
- ◆ VGA signals support embedded analog audio, and audio and video synchronization (if no video, embedded audio can not be transmitted)
- ◆ Supports video upscaling, converting input video to 1080P or 1920x1200P
- ◆ Input signal card with character overlay function
- ◆ Support single port recovery factory settings

GX-VGA4O-D

- ◆ 4 channels for VGA output, 4 channels for analog audio signal output
- ◆ Supports resolution selection, and it is up to 1920x1080P@60Hz
- ◆ Manually select VGA (RGBHV), YPbPr, S-VIDEO or C-VIDEO signal format
- ◆ VGA signals support embedded analog audio, and audio and video synchronization (if no video, embedded audio can not be transmitted)
- ◆ Supports video upscaling, converting input video to 1080P or 1920x1200P
- ◆ When the output board is set to CVBS, the default is PAL and can be set to NTSC.
- ◆ Support single port recovery factory settings



Technical Parameters

Product	4-way VGA seamless input card	4-way VGA seamless output card
Model	GX-VGA4I-D	GX-VGA4O-D
Video Signal		
Type of signal	4 channels for VGA signal, compatible with YPbPr, S-VIDEO, CVBS(manually select)	
Connector	D-sub female	
Input Level	0.5~2.0Vp-p	
Input Impedance	75 Ohm	
Transmission Distance	YPbPr:170MHz; CVBS:150MHz; VGA:170MHz	340MHz(-3dB)
Bandwidth	≤10m(select high quality wire)	
Audio Signal		
Input signal	Analog audio signal input ×4	
Input Connector	3-pin phoenix contact	
Audio input impedance	>10K Ohm	-
Input impedance	75 Ohm	
Frequency response	20Hz~20K Hz	
Transmission Distance	≤10m(select high quality wire)	
General		
Gain	0 dB	
Crosstalk	200ns (Maximum)	
Switching Rate	<-50dB@5MHz	
Power consumption	12W	6W
Working temperature	0°C~50°C	
Relative humidity	10%~90%	
Note: When connecting YPbPr, S-VIDEO and CVBS signals, special connection lines are needed.		

4-way CVBS Seamless Input/Output card

Product Features

GX-CVBS4I-D

- ◆ 4 channels for CVBS input, 4 channels for analog audio signal input
- ◆ Supports video upscaling, converting output video to 1080P or 1920x1200P
- ◆ Support NTSC or PAL, adjusted by instruction
- ◆ Input signal card with character overlay function

GX-CVBS4O-D

- ◆ 4 channels for CVBS output, 4 channels for analog audio signal output
- ◆ The output resolution supports 480i or 576i
- ◆ Support NTSC or PAL, adjusted by instruction
- ◆ Input signal card with character overlay function



Technical Parameters

Product	4-way CVBS seamless input card	4-way CVBS seamless output card
Model	GX-CVBS4I-D	GX-CVBS4O-D
Video signal	4 channels for CVBS signal	
Type of signal	4 channels for CVBS signal	
Connector	BNC	
Resolution	480i or 576i	480i or 576i (default)
Transmission Distance	≤100m(select high quality wire)	
Audio Signal	Analog audio signal input×4	
Signal Type	Analog audio signal input×4	Analog audio signal output×4
Connector	3-pin phoenix contact	
Audio input impedance	>10K Ohm	-
Input impedance	75 Ohm	
Frequency response	20Hz~20K Hz	
Audio Bottom Noise	-80dB	
Audio Maximum Undistorted Voltage	2.0V	
Transmission Distance	≤100m(select high quality wire)	
General	Gain	
Gain	0dB	
Crosstalk	<-50dB@5MHz	
Switching Rate	200ns (Maximum)	
Power consumption	11W	9W
Working temperature	0°C~50°C	
Relative humidity	10%~90%	
Bandwidth	6.75Gbps	

4-way SDI Seamless Input/Output Card

Product Features

GX-SDI4I-D

- ◆ 4 SDI input and 4 loop output ports
- ◆ Compatible with 3G-SDI/HD-SDI/SDI signal formats for SDI input
- ◆ The transmission distance is 100 meters for 1080P signal
- ◆ Supports video upscaling, converting output video to 1080P or 1920x1200P
- ◆ Input signal card with character overlay function

GX-SDI4O-D

- ◆ 4 SDI output and 4 loop output ports
- ◆ Compatible with 3G-SDI/HD-SDI/SDI signal formats for SDI output
- ◆ The transmission distance can up to 100 meters at 1080P.



Technical Parameters

Product	4-way SDI seamless input card	4-way SDI seamless output card
Model	GX-SDI4I-D	GX-SDI4O-D
Type of signal	SDI output ×4 (with SDI loop output ports)	
Connector	BNC	
Input Level	T.M.D.S 2.9V~3.3V	
Input Impedance	75 Ohm	
Video signal	SDI, HD-SDI, 3G-SDI	
Color depth	8&10& 12bit	
Bandwidth	6.75Gbps	
Highest resolution	1080P@60Hz	
Transmission Distance	≤100m(select high quality wire)	
General		
Gain	0dB	
Crosstalk	<-50dB@5MHz	
Switching Rate	200ns(Maximum)	
Power consumption	14W	15W
Working temperature	0°C~50°C	
Relative humidity	10%~90%	

4-way HDBaseT Seamless Input/Output Card

Product Features

GX-HDBaseT4I-D

- ◆ 4 channels for HDBaset input, 4 channels for audio input, 4 channels for RS-232 input/output
- ◆ Supports input resolution selection, and the default is 1920x1080P@60Hz.
- ◆ Input audio defaults to embedded audio input, supporting embedded analog audio
- ◆ Features RS232 ports for two-way RS232 pass-through
- ◆ The transmission distance can up to 70 meters at 1080P.

GX-HDBaseT4O-D

- ◆ 4 channels for HDBaset output, 4 channels for audio output, 4 channels for RS-232 input/output
- ◆ Supports input resolution selection, and the default is 1920x1080P@60Hz.
- ◆ The output de-embedding audio is turned on by default and can be turned off by instruction.
- ◆ Features RS232 ports for two-way RS232 pass-through
- ◆ The transmission distance can up to 70 meters at 1080P.



Technical Parameters

Product	4 channels seamless HDBaseT Input Card	4 channels seamless HDBaseT Output Card
Model	GX-HDBaseT4I-D	GX-HDBaseT4O-D
Video signal	4 channels for HDBaseT signal	
Type of signal	4 channels for HDBaseT signal	
Connector	Rj45, two color indicators with yellow and green	
Input Level	T.M.D.S 2.9V~3.3V	
Input Impedance	100 Ohm	
Bandwidth	10.2Gbps	
Resolution	Up to 1920x1200@60Hz, seamless	
Video Signal Format	Embedded audio support PCM,Dobly Digital,DTS,DTS-HD format, external audio support PCM format	
HDMI standard	HDMI1.3	
EDID and DDC	Support EDID manual management, compatible with HDCP	
Transmission Distance	1080P≤70m(select high quality wire)	
Audio signal	Analog audio signal input×4	
Signal type	Analog audio signal input×4	Analog audio signal output×4
Connector	3.5mm mini jack	
Audio input impedance	>10K Ohm	-
Input impedance	75 Ohm	
Frequency response	20Hz~20K Hz	
Transmission Distance	1080P≤70m(select high quality wire)	
Control signal	RS232 control signal (pass-through) ×4	
Type of signal	RS232 control signal (pass-through) ×4	
Connector	3-pin phoenix contact	
Protocol	Support RS232 protocol	
General		
Gain	0dB	
Crosstalk	<-50dB@5MHz	
Switching Rate	200ns(Maximum)	
Power consumption	21W	
Working temperature	0°C~50°C	
Relative humidity	10%~90%	

4-channel Optical Fiber Seamless Input/Output Card

Product Features

GX-FDDI4I-D

- ◆ 4-way optical fiber input
- ◆ It is used with optical fiber transmitter and seamless optical fiber output card
- ◆ The transmission signal type is DVI/HDM ,support 1080P seamless transfer
- ◆ The transmission distance of single mode is 2KM, and the multi-mode is 300M
- ◆ Does not support HDCP transmission, no DDC data read channel

GX-FDDI4O-D

- ◆ 4-way optical fiber output
- ◆ It is used with optical fiber transmitter and seamless optical fiber output card
- ◆ The transmission signal type is DVI/HDM ,support 1080P seamless transfer
- ◆ The transmission distance of single mode is 2KM, and the multi-mode is 300M
- ◆ Does not support HDCP transmission, no DDC data read channel



Technical Parameters

Product	4-way Seamless Optical Fiber Input Card	4-way Seamless Optical Fiber Output Card
Model	GX-FDDI4I-D	GX-FDDI4O-D
Type of signal	Optical Fiber Input×4	Optical Fiber Output×4
Connector	Optical Fiber LC connector	
Type of optical fiber	Single mode/Multi-mode	
Optical fiber signal	Up to 1920×1200@60Hz resolution, seamless	
Transmission Distance	Single mode ≤2KM, Multi-mode ≤300M	
Data Rate	10.2Gbit/s	
Date	DVI/HDMI	
Color depth	8bit, 10bit, 12bit, 16bit	
General		
Gain	0dB	
Crosstalk	<-50dB@5MHz	
Switching Rate	200ns (Maximum)	
Power consumption	24W	32W
Working temperature	0°C~50°C	
Relative humidity	10%~90%	

◆ 4-way 4K HDMI Seamless Input/Output Card

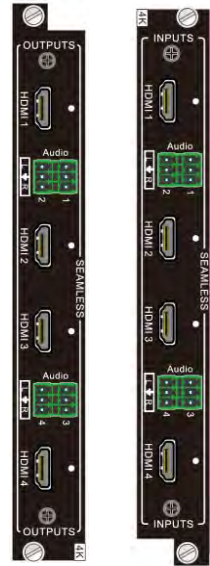
◆ Product Features

GX-HDMI4IF-D

- ◆ 4 ways of HDMI input, 4 ways of analog audio input
- ◆ Resolution up to 4096*2160@60Hz4:2:2, support seamless switching
- ◆ Support HDMI1.4, HDCP2.2, compatible with DVI signal
- ◆ Support embedded analog audio, HDMI defaults to embedded audio
- ◆ Input signal card with character overlay function
- ◆ Can be used with 1080P seamless card

GX-HDMI4OF-D

- ◆ 4 ways of HDMI output, 4 ways of analog audio output
- ◆ Resolution up to 4096*2160@60Hz4:2:2, support seamless switching
- ◆ Support HDMI1.4, HDCP2.2, compatible with DVI signal
- ◆ The output de-embedding audio is turned on by default and can be turned off by instruction.
- ◆ Support output simple stitching
- ◆ Can be used with 1080P seamless card



Technical Parameters

Product	4-way 4K Seamless HDMI Input Card	4-way 4K Seamless HDMI Output Card
Model	GX-HDMI4IF-D	GX-HDMI4OF-D
HDMI		
Type of signal	Optical Fiber Input ×4, compatible with DVI-D	Optical Fiber Output ×4, compatible with DVI-D
Interface	HDMI Type A	
Color depth	8bit	
Resolution	Resolution up to 4K and seamless switching	
Audio signal		
Signal type	Analog audio signal input×4	Analog audio signal output×4
Connector	3-pin phoenix contact	
Audio Input Impedance	>10K Ohm	
Input Impedance	75 Ohm	
Frequency response	20Hz~20K Hz	
Transmission distance	≤10m(select high quality wire)	
General		
Bandwidth	10.2Gpbs	
Audio format	Embedded audio support PCM,Dobly Digital,DTS, DTS-HD format, external audio support PCM format	
Standard	HDMI1.4, HDCP2.2	
EDID Management	Support EDID learning function	
Transmission distance	1080P≤10m; 4K≤5m(select high quality wire)	
Power Consumption	6W	
Working temperature	0°C~50°C	
Relative humidity	10%~90%	



◆ 4-way 4K HDBaseT Input/Output Signal Card

GX-HDBaseT2IF-D/GX-HDBaseT2OF-D



GX-HDBaseT2IF-D



GX-HDBaseT2OF-D

◆ Product Features

GX-HDBaseT2IF-D

- ◆ 2 ways of HDBaset input, 2 ways of audio input, 2 ways of RS-232 input/output
- ◆ Seamless switch default resolution is 3840*2160@30hz, which can be adjusted by instructions
- ◆ Output demultiplexing audio is on by default, which can be closed by instructions.
- ◆ Support RS232 and remote passthrough, realize two-way communication for serial port
- ◆ Max transmission distance for 1080P is 70m, 4K transmission is 40m

GX-HDBaseT2OF-D

- ◆ 2 ways of HDBaset output, 2 ways of audio output, 2 ways of RS-232 input/output
- ◆ Seamless switch default resolution is 3840*2160@30hz, which can be adjusted by instructions
- ◆ Output demultiplexing audio is on by default, which can be closed by instructions.
- ◆ Support RS232 and remote passthrough, realize two-way communication for serial port
- ◆ Max transmission distance for 1080P is 70m, 4K transmission is 40m

Technical Parameters

Video Signal	
Signal type	2 ways of HDBaset signals
Connector	RJ45, with yellow-and-green indicator
Input level	T.M.D.S 2.9V~3.3V
Input resistance	Differential 100 Ohm
Bandwidth	10.2Gbps
Resolutions	Max resolution support 3840*2160@30hz, seamless
Audio formats	Embedded audio supports PCM, Dobby Digital, DTS, DTS-HD format, external audio supports PCM format
HDMI standard	Support HDMI1.3
EDID and HDCP	Support EDID manual management, compatible with HDCP
Transmission distance	1080P≤70m, 4K≤40m(please work with high-class cable)
Audio Signal	
Signal type	Analog audio signal input ×2
Connector	3.5mm audio out socket
Input resistance	75 Ohm
Frequency response	20Hz~20K Hz
Control Signal	
Signal type	RS232 control signal (passthrough) ×2
Connector	3P Phoenix
Protocol	Support RS232 protocol
Common Parameter	
Signal gain	0dB
Crosstalk	<-50dB@5MHz
Switch speed	200ns (Max.)
Power Consumption	15W
Working temperature	0℃ ~+50℃
Working humidity	10%~90%

◆ Signal Decoding Card **GX-PV40-D**



◆ Product Features

- ◆ Work with a mixed card-insertion matrix switcher to realize video preview
- ◆ Through the matrix control software, realize video switch, preview and pre-edit setting and others
- ◆ Preview 4 ways of video sources, the resolution of each way of preview video is up to 720p

◆ Technical Parameters

Interfaces	1*RJ45、1*USB
Power	powered by the host
Max power consumption	18W
Working temperature	0°C ~50°C
Working humidity	10%~90%
Size	195mm×25mm×152mm
Product weight	195g

◆ Signal Decoding Card **GX-IP4I-D**



◆ Product Features

- ◆ Acquisition of streaming signal is up to 1920*1200@60hz
- ◆ Support information check of input signal
- ◆ Support controlling signal via network, namely the user can control the camera through IP with the sever software
- ◆ Support ONVIF protocol, compatible with GB28181 standard
- ◆ Support online update, which makes maintenance easier

◆ Technical Parameters

Interface type	1xRJ45 2x3PIN
Compression and coding standard	Support H. 264/AVC (MPEG-4 Part 10, AVC, Baseline/main/High Profile) compression standard
Protocols of network video	Support decoding process with H.264/RTSP/RTP standard protocols
Working temperature	0~ 50°C
Working humidity	10% ~ 90%
Weight	190G
Power	Powered by the host
Power consumption	11.8W

HDMI Matrix GX-HDMI0404S2/GXHDMI0808S2



Product Features

- ◆ New compact design and 1U metal housing for rack mounting.
- ◆ The front panel has infrared receiving window, communication indicator, input selection buttons and LED display, plus/minus 1 adjustment button, plus 10 adjustment button, output selection and function buttons, confirmation button.
- ◆ GX-HDMI0404S2 has 4 HDMI input interfaces, the first of which supports HDCP, and 4 HDMI output interfaces.
- ◆ GX-HDMI0808S2 has 8 HDMI input interfaces, the first of which supports HDCP, with 8 HDMI output interfaces
- ◆ Support 1 road HDCP decoding; 1 road audio de-embedding, of which the GX-HDMI0808S2 audio output using 3.5 audio interface
- ◆ Support one or more HDMI signal output to one or more display devices
- ◆ The highest supported resolution 3840 × 2160 @ 30Hz, backward compatible with 1080P, 1080i, 720P, 576P, 576i, 480P, 480i
- ◆ With 1-way RS232 protocol control interface, with 1-way network control interface (optional)
- ◆ Support key and RS232 control, optional infrared control, network control function
- ◆ Support through the PC client software or access to the central control system to achieve remote control
- ◆ Support EDID reading and writing, switching, built-in support for 2K, 4K resolution EDID
- ◆ Support 10 groups of scene call, save function
- ◆ Support fast switching, speed up to 200ns
- ◆ Support AC100~240V wide voltage, suitable for power input in all regions of the world.
- ◆ Widely used in video conference rooms, educational institutions, control rooms, monitoring centers, government and demonstration halls, etc.

Technical Parameters

Model	GX-HDMI0404S2	GX-HDMI0808S2
Input	4CH HDMI, HDMI-A Female Interface	8 HDMI, HDMI-A Female Interface
Outputs	4 HDMI, HDMI-A Female Interface	8CH HDMI, HDMI-A Female, 1CH 3.5 Audio Output
Power-Down Save		Support
Scene Function		Support 10 groups of scene recall and save
HDCP Function		Support HDCP decoding for the first channel
EDID Management		Support EDID read/write, switch, built-in support 2K, 4K resolution EDID
3D		Support
Signal Gain		0dB
Resolution Range	3840×2160@30Hz, 1080P@24/50/60/120Hz, 1080i, 720P, 576P, 576i, 480P, 480i	
Switching Speed	200ns (Max.)	
Maximum Input/Output Distance	1080P: use standard 24AWG cable, input support 15 meters, output support 15 meters 4K: using standard 24AWG cable, input support 7 meters, output support 7 meters	
Control Mode	Support key control, RS232 control, optional infrared control, network control	
Power Supply	AC100V~240V, 50~60Hz	
Power Consumption	<10W	
Working Temperature	-20~70℃	
Working Humidity	10%~90%	
Product Size	483×255×44mm (W×D×H)	
Product Weight	7kg	7.4kg

◆ HDBaseT Transmitter



GX-TF101T-D

◆ Product Features

- ◆ With LINK indicator, HDCP indicator, power indicator, real-time display of the work status
- ◆ With 1 HDMI input interface, 1 HDBaseT output interface, 1 IR IN interface, 1 IR OUT interface, 1 RS232 control interface
- ◆ Support Full HD/Ultra HD video signals: 1080P3D and 4Kx2K resolution
- ◆ Single CAT5e/CAT6a cable transmits HDMI signals with a resolution of 1080P up to 70 meters, and transmits HDMI signals with a resolution of 4Kx2K up to 40 meters.
- ◆ Conforms to HDCP2.2 and HDMI2.0 standards.
- ◆ Adopts HDBaseT technology
- ◆ Support CEC/IR/RS232 transmitting function
- ◆ Support bidirectional function, the device supports bidirectional PoH (remote power supply), bidirectional RS232 communication, bidirectional IR control function

◆ Technical Parameters

Model	GX-TF101T-D
Signal Input	1×HDMI (Type A HDMI female interface)
Signal Output	1×HDBaseT (RJ-45 terminal)
Control Signal (Transmission)	1×IR IN (3.5mm jack) 1×IR OUT (3.5mm jack) 1×RS232 (3pin Phoenix terminal)
Transmission Method	HDBaseT
Transmission Distance	4K×2K (≤40m), 1080p (≤70m)
Bandwidth	10.2Gbps
Standards	Support HDMI2.0 and HDCP2.2 standards
External Power Supply	Input AC100V~240V, 50~60Hz Output DC24V 1.25A
Power Consumption	≤14W
Operating Temperature	0~50℃
Humidity	10%~90%
Chassis Size	115×16.2×109mm
Product Weight	193g

HDBaseT Receiver



GX-TF101R-D

Product Features

- ◆ With LINK indicator, HDCP indicator, power indicator, real-time display of the work status
- ◆ With 1 HDBaseT input interface, 1 HDMI output interface, 1 IR IN interface, 1 IR OUT interface, 1 RS232 control interface
- ◆ Support Full HD/Ultra HD video signal: 1080P3D and 4Kx2K resolution
- ◆ Single CAT5e/CAT6a cable transmits HDMI signals with a resolution of 1080P up to 70 meters, and transmits HDMI signals with a resolution of 4Kx2K up to 40 meters.
- ◆ Conforms to HDCP2.2 and HDMI2.0 standards.
- ◆ Adopts HDBaseT technology
- ◆ Support CEC/IR/RS232 transmitting function
- ◆ Support bidirectional function, the device supports bidirectional PoH, bidirectional RS232 communication, bidirectional IR control, bidirectional remote power supply function

Technical Parameters

Model	GX-TF101R-D
Signal Input	1×HDBaseT (RJ-45 terminal)
Signal Output	1×HDMI (Type A HDMI female interface) 1×IR IN (3.5mm jack)
Control Signal (Transmission)	1×IR OUT (3.5mm jack) 1×RS232 (3pin Phoenix terminal)
Transmission Method	HDBaseT
Transmission Distance	4K×2K (≤40m), 1080p (≤70m)
Bandwidth	10.2Gbps
Standards	Support HDMI2.0 and HDCP2.2 standards
External Power Supply	Input AC100V~240V, 50~60Hz Output DC24V 1.25A
Power Consumption	≤14W
Operating Temperature	0~50℃
Humidity	10%~90%
Chassis Size	115×16.2×109mm
Product Weight	196g

Wall Plate HDBaseT Transmitter

GX-TF105T-D

Product Features

- ◆ Wall insert installation design.
- ◆ Support HDMI 1.4, Transmits HDMI signals up to 4K*2K.
- ◆ 1.5s switching speed and stable performance.
- ◆ High bandwidth: 10.2Gbps
- ◆ HDCP compliance, equipped with HDCP auto tracking solution.
- ◆ Support bi directional power supply function.
- ◆ Maximum transmission distance is 60 m for 1080P and 40m for 4K*2K over single CAT5e cable.
- ◆ Energize Programmable Control Panel with a 12V DC power output.
- ◆ supports bi directional RS232 pass through control.
- ◆ Provides auto switching capability.
- ◆ HDMI/ VGA interfaces support hot-plug.



Technical Parameters

Video Input	2*HDMI(Type A HDMI Female); 1*VGA(D-Sub)
Audio Input	1*AUDIO(3.5mm jack), Synchronous VGA Audio
Frequency Response	20Hz~20KHz
Impedance	>10Ω
SNR	>85db@20Hz~20KHz
Output	1*HDBaseT(RJ45 Connector)
Control Ports (pass-through)	1*RS232(3pin Phoenix Contact)
Transmission Mode	HDBaseT
Transmission Distance	1080P≤60 m(PoC), 4K*2K≤40 m (PoC)
Bandwidth	10.2Gbps
HDMI Standard	Support HDMI1.4 and HDCP
Power Supply	DC 12V/2A
Power Consumption	9.6W
Temperature	0~50°C
Humidity	10% ~ 90%
Dimension (W*D*H)	104.5*89*44mm
Net Weight	0.24Kg

Fiber Transmitter GX-TF104T-D **Fiber Receiver** GX-TF104R-D

Product Features

Regular

- ◆ Support 1080P 3D & 4K*2K@60Hz signal.
- ◆ Audio input source optional.
- ◆ Support EDID learning function, built-in 10 types of EDID data.
- ◆ Real time LED indicators for easy diagnosis and troubleshooting.
- ◆ Support firmware upgrade via Micro USB port.
- ◆ Supports hot plug.



GX-TF104T-D

Fiber Transmitter GX-TF104T-D

- ◆ HDMI input port, compatible with HDMI& DVI signal.
- ◆ 1 analog audio input port, support PCM (dual channel), stereo transmission.
- ◆ 1 way fiber signal output, single-mode (without HDCP) transmission distance up to 2km.



GX-TF104R-D

Fiber Receiver GX-TF104R-D

- ◆ 1 way fiber signal input, single-mode (without HDCP) transmission distance up to 2km.
- ◆ HDMI output port, compatible with HDMI& DVI signal.
- ◆ 1 analog audio output port, support PCM (dual channel), stereo transmission.

Technical Parameters

Model	GX-TF104T-D	GX-TF104R-D
Input	1*HDMI(Type A HDMI Female)	1*Fiber signal
Output	1*AUDIO(3.5mm jack) 1*Fiber signal	1*AUDIO(3.5mm jack), 1*HDMI(Type A HDMI Female)
Fiber connector	SPF Fiber connector	
Connector	LC fiber connector,date rate 10.2Gbps(Max)	
Transmission distance	300M(Max, OM3 Multimode fiber) 2KM(Single-mode fiber, suit to single mode fiber optical module)	
Transmission Solution(Max)	4K*2K	
Date rate(Max)	10.2Gbit/s	
Standards	HDMI1.4& DV11.0; Stereo	
Power supply	Input:AC 100~240V,50/60Hz, Output:DC 5V 1A	
Power consumption	3.1W	2.7W
Temperature	0~50°C	
Reference Humidity	10% ~ 90%	
Dimension(W*D*H)	120 * 80* 32mm	
Weight	240g	

◆ HDBaseT Extenders **GX-TF201T&R-D**



◆ Product Features

- ◆ Compose of HDBaseT Transmitter GX-TF201T-D and HDBaseT Receiver GX-TF201R-D.
- ◆ Highest resolution up to 4Kx2k/60Hz.
- ◆ Compliant with HDCP2.2 standard.
- ◆ Maximum transmission distance is 70 m for 4K*2K HDMI.
- ◆ Maximum transmission distance is 100 m for 1080P HDMI.
- ◆ Ethernet network signal maximum transmission distance is 100 m.
- ◆ Support bi-directional PoC.
- ◆ Support IR/RS232/CEC pass through.

◆ Technical Parameters

Product	HDBaseT Transmitter	HDBaseT Receiver
Model	GX-TF201T-D	GX-TF201R-D
Input	1*HDMI(Type A HDMI Female)	1*HDBaseT(RJ45 Connector)
Output	1*HDBaseT(RJ45 Connector)	1*HDMI(Type A HDMI Female)
Ethernet Connector	2*ETHERNET(RJ45 Connector)	
Ethernet control speed	Maximum distance adaptive 10M/100M, full or half duplex	
Control Ports (pass-through)	1*IR IN(3.5mm jack),1*IR OUT(3.5mm jack), 1*RS232(3pin Phoenix Contact)	
Transmission Mode	HDBaseT	
Transmission distance	1080P ≤ 100m,4K*2K ≤ 70m	
Bandwidth	10.2Gbps	
Standard	HDMI1.4 & HDCP2.2	
Temperature	0 ~50°C	
Reference Humidity	0% ~ 90%	
Power supply	Input: AC100 ~ 240V50/60Hz, Output 24V DC 1.25A	
Power consumption	10W	
Dimension(W*D*H)	152*104*16.2mm	
Weight	235g	241g

HDMI Extender GX-TF203T&R-D



Product Features

- ◆ Use standard CAT6 network cable, support 60 meters, 1080P lossless transmission
- ◆ Use standard AWG24 HDMI cable, input and output distance up to 15 meters
- ◆ Built-in EDID, support 3D signal
- ◆ Built-in signal amplification module
- ◆ Synchronized transmission of audio and video
- ◆ Metal shell, strong heat dissipation
- ◆ Stable power supply design, with over power protection device
- ◆ Network port with indicator, easy to see the working status

Technical Parameters

HDMI Input and Output	1080p/1080i/720p/576p/576i/480p/480i
Input and output TMDS signal	0.5~1.5Vp-p (TTL)
Input and output DDC signal	5Vp-p (TTL)
Input/Output Cable Length	Less than 15 meters (using standard AWG24 HDMI cable)
POWER	DC5V
Wattage	2W
Operating Temperature	0~40°C
Operating Temperature	5~85%RH (non-condensing)
Dimension (L×W×H)	82×45×22mm

GONSIN CONFERENCE EQUIPMENT CO.,LTD.
www.gonsin.com



English WeChat



All rights reserved. The information and specifications included are subject to change without prior notice.