

10000N Series Seamless Compatible Wired and Wireless Conference System



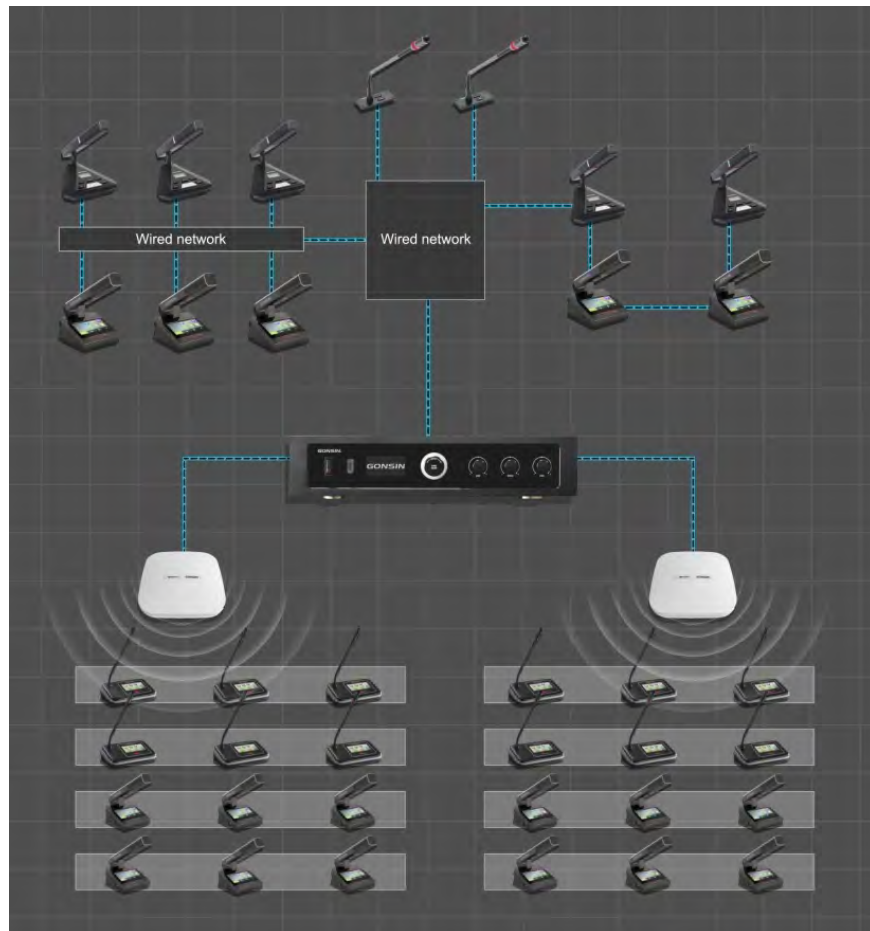
GONSIN®



GONSIN® 10000N Series

Seamless Compatible

Wired and Wireless Conference System



Seamless integration of wired and wireless technology,
adaptable to every venue requirement.



- Multiple Installation Methods: support wireless, wired and flush-mounting installations
- Unified management and seamless data exchange across different terminals within the same system

Rectangular Columnar Short Microphone with Large Diaphragm Capacitor MIC Core

- Utilizing a unique acoustic chamber design with a 14mm large diaphragm condenser microphone core, featuring built-in windproof cotton.
- Cardioid pickup technology for extended pickup range, high signal-to-noise ratio, and superior sound reproduction.



Multifunctional and Innovative Ready with Just One Touch

- Configurable for any chairman/vice-chairman terminal, featuring multiple speaking modes.
- Built-in voting and interpretation software; Connecting to wireless AP expands wireless interpretation function.
- Touching the screen buttons enables functions such as discussion, voting, interpretation, service call, and central control.





Multiple backups ensure smooth conduct of conferences.

- Ensure the secure and stable operation of the system, guarantee smooth conference discussion and voting processes
- Support dual-server hot stand-by , dual-server hot stand-by function of the management software and dual-chain backup of conference terminal



Offer AES67 Interface
Compatible with Dante Protocol
Seamless Audio Transmission

- Compatible with international industry standards, ensuring flexible device integration and efficient, stable communication.

4-way Audio Partition
A single system capable of merging or splitting multiple venues for simultaneous or separate meetings.

- The system can be configured and utilized according to specific requirements.

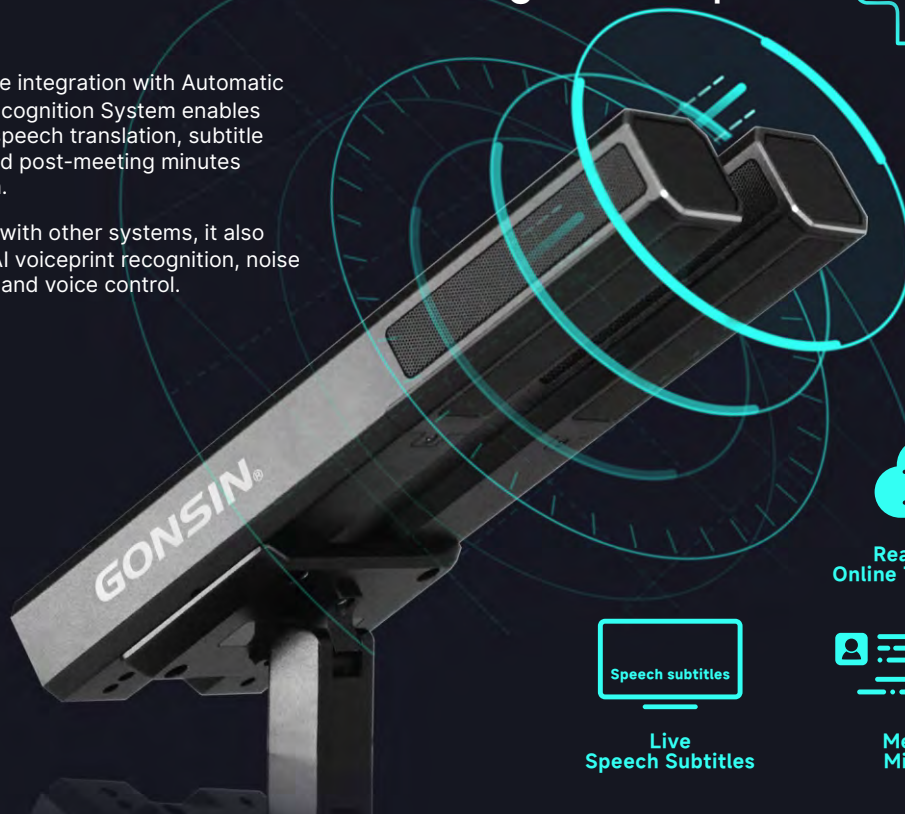
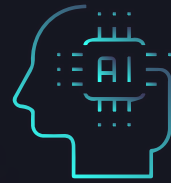


HD Camera intelligently capture every moment of brilliance.

- The system is built-in video matrix control and camera tracking management software, supporting HD automatic camera tracking. When paired with designated terminals, it enables infrared motion camera tracking.

Support ASR Function Real-time Subtitle and Meeting Transcript

- Expandable integration with Automatic Speech Recognition System enables real-time speech translation, subtitle display, and post-meeting minutes generation.
- Combined with other systems, it also supports AI voiceprint recognition, noise reduction, and voice control.



Real-Time
Online Translation

Speech subtitles
Live
Speech Subtitles

Meeting
Minutes

10000N Series Seamless Compatible Wired and Wireless Conference System

- ◆ With wired and wireless seamless compatible technology, wired conference terminals and wireless conference terminals can be mixed into the same conference server for unified management, data intercommunication, and meet the needs of different users
- ◆ Multiple backup mechanisms ensure the safe, stable and reliable operation of the system, and ensure that the meeting goes on smoothly without being interrupted, satisfying the stringent requirements of high-end meetings for equipment:
 - Support dual-server hot stand-by function. When the current server doesn't work, it will automatically switch to the stand-by server
 - Support dual-server hot stand-by function of the management software. When the current computer doesn't work, it will automatically switch to the stand-by computer
 - With a dual-chain backup function of the conference terminal. When the main chain fails, it can be switched to the backup chain for continued use (configured with Rectangular Columnar Short Microphone)
 - It supports ring connection. The breakdown of one extension won't influence the other extensions, and the malfunction of one attachment among the extensions won't influence the system to work.
- ◆ Support the application of splitting and merging of the conference room, with 4 channels of audio grouping output, can be split into an independent system using in multiple meeting rooms, or can be used at the same time as the whole system, which is convenient and flexible
- ◆ The wired conference terminal supports star connection, hand-in-hand connection and mixed connection, and all devices are connected by network cables, which is convenient for construction and management
- ◆ The wireless conference terminal supports 2.4G/5.2G/5.8G triple-band communication to ensure system stability
- ◆ With Automatic Speech Recognition System, it can realize the transcription of speech into text by role, and generate meeting minutes, effectively reducing the workload of meeting affairs and improving efficiency



Wireless Basic Discussion Terminal

DCS-1022C-W/DCS-1022D-W



Wireless Discussion Chairman Terminal
DCS-1022C-W



Wireless Discussion Delegate Terminal
DCS-1022D-W

Features

- ◆ The terminal adopts a pluggable dual hose gooseneck microphone, available in various lengths, with status indicator.
- ◆ With 4.3" touch screen display, support interface customization. Provide reusable physical speaking buttons, short press to turn on/off the microphone, long press to turn on the terminal.
- ◆ The base adopts a square geometric design. Provide 1 way 3.5mm headphone jack and 1 way 3.5mm recording jack, with adjustable volume. The use of removable lithium batteries, continuous speech time (turn on the monitor) \geq 8.5 hours, standby time (under the state of the lowest power consumption) \geq 14 hours
- ◆ Provide 1 way DC charging interface, support 12V2A DC charging. Supports removable batteries that can be placed in a charging box for recharging. The terminal has a built-in power-down detection and protection circuit with functions of power monitoring, energy-saving control, low-voltage warning, and automatic shutdown protection (automatic shutdown protection for three consecutive minutes without signal).
- ◆ The terminal adopts WiFi wireless communication technology, which conforms to IEEE 802.11n network standard and supports 2.4GHz/5.2GHz/5.8GHz tri-band communication. It adopts 128-bit AES encryption technology and supports WEP/WPA/WPA2 wireless security technology to ensure the privacy of the meeting and avoid eavesdropping and malicious interference.
- ◆ Support independent sensitivity adjustment, allowing real-time adjustment of pickup distance based on the speaker's posture and ambient noise levels.
- ◆ Support multiple speaking modes: FIFO, Auto, Operator, VOX, PTT, Request, Time-limited (requires software integration)
- ◆ Any delegate terminal can be set as the vice-chairman terminal. There is no limit to the number of chairman/vice-chairman terminals in the system. The chairman has all the functions of the delegate, but also has the following functions:
 - Support unrestricted microphone activation, not limited by the number of activations or software control restrictions.
 - Has a speech interruption key to deactivate the microphone of a delegate terminal currently speaking.
 - With speech control function, it can control the microphone on and off through the touch screen (specified models).
- ◆ With monitoring function. Built-in speaker with adjustable volume. When the microphone is turned on, the speaker of this machine is automatically turned off to prevent the sound from whistling back. Built-in card reader module, supporting contact IC card recognition.
- ◆ The terminal offers a service call function, allowing users to tap on icons such as tea, paper, pen, or help on the touch screen to request services from the system backend (it needs to be used with the call service software).

Technical Parameters

Operating Frequency	2.4GHz/5.2GHz/5.8GHz
Battery Capacity	3000mAh
Audio Frequency Response	20Hz ~ 20KHz
Sensitivity	-46 dBV/Pa
Equivalent Noise Level	20dBA (SPL)
Maximum Sound Pressure Level	125dB (THD < 3%)
Total Harmonic Distortion	< 0.05%
Signal-to-Noise Ratio	≥96dB
Directivity	Cardioid
Directionality	0°/180° : > 20 dB (1 kHz)
Dimension(L×W×H)	Base: 212mm×139mm×67mm Gooseneck: 310mm (standard)
Weight	0.94Kg

**Wireless Discussion Terminal
with Voting and Interpretation**
DCS-1022CF-W/DCS-1022DF-W



Wireless Chairman Terminal
with Discussion,Voting and Interpretation
DCS-1022CF-W



Wireless Delegate Terminal
with Discussion,Voting and Interpretation
DCS-1022DF-W

Features

- ◆ The terminal adopts a pluggable dual hose gooseneck microphone, available in various lengths, with status indicator.
- ◆ With 4.3" touch screen display, support interface customization. Provide reusable physical speaking buttons, short press to turn on/off the microphone, long press to turn on the terminal.
- ◆ The base adopts a square geometric design. Provide 1 way 3.5mm headphone jack and 1 way 3.5mm recording jack, with adjustable volume. The use of removable lithium batteries, continuous speech time (turn on the monitor) ≥ 8.5 hours, standby time (under the state of the lowest power consumption) ≥ 14 hours

- ◆ Provide 1 way DC charging interface, support 12V2A DC charging. Supports removable batteries that can be placed in a charging box for recharging. The terminal has a built-in power-down detection and protection circuit with functions of power monitoring, energy-saving control, low-voltage warning, and automatic shutdown protection (automatic shutdown protection for three consecutive minutes without signal).
- ◆ The terminal adopts WiFi wireless communication technology, which conforms to IEEE 802.11n network standard and supports 2.4GHz/5.2GHz/5.8GHz tri-band communication. It adopts 128-bit AES encryption technology and supports WEP/WPA/WPA2 wireless security technology to ensure the privacy of the meeting and avoid eavesdropping and malicious interference.
- ◆ Support independent sensitivity adjustment, allowing real-time adjustment of pickup distance based on the speaker's posture and ambient noise levels.
- ◆ Support multiple speaking modes: FIFO, Auto, Operator, VOX, PTT, Request, Time-limited (requires software integration)
- ◆ Any delegate terminal can be set as the vice-chairman terminal. There is no limit to the number of chairman/vice-chairman terminals in the system. The chairman has all the functions of the delegate, but also has the following functions:
 - Support unrestricted microphone activation, not limited by the number of activations or software control restrictions.
 - Has a speech interruption key to deactivate the microphone of a delegate terminal currently speaking.
 - With speech control function, it can control the microphone on and off through the touch screen (specified models).
- ◆ With monitoring function. Built-in speaker with adjustable volume. When the microphone is turned on, the speaker of this machine is automatically turned off to prevent the sound from whistling back. Built-in card reader module, supporting contact IC card recognition.
- ◆ With simultaneous interpretation channel selector, the audio frequency response of the simultaneous interpretation channel can be up to 20Hz~20kHz, which can realize the function of 6-channel simultaneous interpretation (including the floor channel).
- ◆ Supports quick voting without the need for pre-entering topics and voting options. Voting can be initiated instantly. When used with software, it can provide various registration and voting functions.
- ◆ The terminal offers a service call function, allowing users to tap on icons such as tea, paper, pen, or help on the touch screen to request services from the system backend (it needs to be used with the call service software).

Technical Parameters

Operating Frequency	2.4GHz/5.2GHz/5.8GHz
Battery Capacity	3000mAh
Audio Frequency Response	20Hz ~ 20KHz
Sensitivity	-46 dBV/Pa
Equivalent Noise Level	20dBA (SPL)
Maximum Sound Pressure Level	125dB (THD < 3%)
Total Harmonic Distortion	< 0.05%
Signal-to-Noise Ratio	≥96dB
Directivity	Cardioid
Directionality	0°/180° : > 20 dB (1 kHz)
Dimension(L×W×H)	Base: 212mm×139mm×67mm Gooseneck: 310mm (standard)
Weight	0.94Kg

Wireless Basic Discussion Terminal

DCS-1023C-W/DCS-1023D-W



Wireless Discussion Chairman Terminal
DCS-1023C-W



Wireless Discussion Delegate Terminal
DCS-1023D-W

Features

- ◆ The terminal adopts metal material with a fixed rectangular columnar short microphone, with dual-color status indicator, supporting status color setting. With a maximum adjustable tilt angle of 55° and built-in windproof cotton and a cavity pickup structure.
- ◆ With 4.3" touch screen display, support interface customization. Provide reusable physical speaking buttons, short press to turn on/off the microphone, long press to turn on the terminal. With key indicator, support dual-color display.
- ◆ The base adopts a square geometric design and can be used with a nameplate to display the name. Provide 1 way 3.5mm headphone jack with adjustable volume. Built-in rechargeable lithium battery, continuous use time (speaking status) ≥ 17 hours.
- ◆ Provide 1 way DC charging interface, support 12V2A DC charging. Charge with charging box. The terminal has a built-in power-down detection and protection circuit with functions of power monitoring, energy-saving control, low-voltage warning, and automatic shutdown protection (automatic shutdown protection for three consecutive minutes without signal).
- ◆ The terminal adopts WiFi wireless communication technology, which conforms to IEEE 802.11n network standard and supports 2.4GHz/5.2GHz/5.8GHz tri-band communication. It adopts 128-bit AES encryption technology and supports WEP/WPA/WPA2 wireless security technology to ensure the privacy of the meeting and avoid eavesdropping and malicious interference.
- ◆ Support independent sensitivity adjustment, allowing real-time adjustment of pickup distance based on the speaker's posture and ambient noise levels.
- ◆ Support multiple speaking modes: FIFO, Auto, Operator, VOX, PTT, Request, Time-limited (requires software integration)
- ◆ Any delegate terminal can be set as the vice-chairman terminal. There is no limit to the number of chairman/vice-chairman terminals in the system. The chairman has all the functions of the delegate, but also has the following functions:
 - Support unrestricted microphone activation, not limited by the number of activations or software control restrictions.
 - Has a speech interruption key to deactivate the microphone of a delegate terminal currently speaking.
 - With speech control function, it can control the microphone on and off through the touch screen (specified models).
- ◆ The terminal offers a service call function, allowing users to tap on icons such as tea, paper, pen, or help on the touch screen to request services from the system backend (it needs to be used with the call service software).

Technical Parameters

Operating Frequency	2.4GHz/5.2GHz/5.8GHz
Battery Capacity	6700mAh
Audio Frequency Response	20Hz ~ 20KHz
Sensitivity	-46 dBV/Pa
Equivalent Noise Level	20dBA (SPL)
Maximum Sound Pressure Level	125dB (THD < 3%)
Total Harmonic Distortion	< 0.05%
Signal-to-Noise Ratio	≥96dB
Directivity	Cardioid
Directionality	0°/135° : > 20 dB (1 kHz) 0°/180° : > 15 dB (1 kHz)
Dimension(L×W×H)	Base: 140mm x 120mm x 65mm Rectangular Columnar Short Microphone: 220mm x 33mm x 27mm
Weight	1Kg

Wireless Discussion Terminal with Voting and Interpretation

DCS-1023CF-W/DCS-1023DF-W



Wireless Chairman Terminal
with Discussion ,Voting and Interpretation
DCS-1023CF-W



Wireless Delegate Terminal
with Discussion ,Voting and Interpretation
DCS-1023DF-W

Features

- ◆ The terminal adopts metal material with a fixed rectangular columnar short microphone, with dual-color status indicator, supporting status color setting. With a maximum adjustable tilt angle of 55° and built-in windproof cotton and a cavity pickup structure.
- ◆ With 4.3" touch screen display, support interface customization. Provide reusable physical speaking buttons, short press to turn on/off the microphone, long press to turn on the terminal. With key indicator, support dual-color display.
- ◆ The base adopts a square geometric design and can be used with a nameplate to display the name. Provide 1 way 3.5mm headphone jack with adjustable volume. Built-in rechargeable lithium battery, continuous use time (speaking status) ≥ 17 hours.
- ◆ Provide 1 way DC charging interface, support 12V2A DC charging. Charge with charging box. The terminal has a built-in power-down detection and protection circuit with functions of power monitoring, energy-saving control, low-voltage warning, and automatic shutdown protection (automatic shutdown protection for three consecutive minutes without signal).

- ◆ The terminal adopts WiFi wireless communication technology, which conforms to IEEE 802.11n network standard and supports 2.4GHz/5.2GHz/5.8GHz tri-band communication. It adopts 128-bit AES encryption technology and supports WEP/WPA/WPA2 wireless security technology to ensure the privacy of the meeting and avoid eavesdropping and malicious interference.
- ◆ Support independent sensitivity adjustment, allowing real-time adjustment of pickup distance based on the speaker's posture and ambient noise levels.
- ◆ Support multiple speaking modes: FIFO, Auto, Operator, VOX, PTT, Request, Time-limited (requires software integration)
- ◆ Any delegate terminal can be set as the vice-chairman terminal. There is no limit to the number of chairman/vice-chairman terminals in the system. The chairman has all the functions of the delegate, but also has the following functions:
 - Support unrestricted microphone activation, not limited by the number of activations or software control restrictions.
 - Has a speech interruption key to deactivate the microphone of a delegate terminal currently speaking.
 - With speech control function, it can control the microphone on and off through the touch screen (specified models).
- ◆ With monitoring function. Built-in speaker with adjustable volume. When the microphone is turned on, the speaker of this machine is automatically turned off to prevent the sound from whistling back. Built-in NFC module, support with NFC devices, NFC card for close range wireless communication.
- ◆ With simultaneous interpretation channel selector, the audio frequency response of the simultaneous interpretation channel can be up to 20Hz~20kHz, which can realize the function of 32-channel simultaneous interpretation (including the floor channel).
- ◆ Supports quick voting without the need for pre-entering topics and voting options. Voting can be initiated instantly. When used with software, it can provide various registration and voting functions.
- ◆ The terminal provides a variety of standby interfaces, including clock, flag, pattern, name and so on. Support meeting content display, displaying current meeting information. Support QR code display, can scan the code to get the information file.
- ◆ The terminal offers a service call function, allowing users to tap on icons such as tea, paper, pen, or help on the touch screen to request services from the system backend (it needs to be used with the call service software).

Technical Parameters

Operating Frequency	2.4GHz/5.2GHz/5.8GHz
Battery Capacity	6700mAh
Audio Frequency Response	20Hz ~ 20KHz
Sensitivity	-46 dBV/Pa
Equivalent Noise Level	20dBA (SPL)
Maximum Sound Pressure Level	125dB (THD < 3%)
Total Harmonic Distortion	< 0.05%
Signal-to-Noise Ratio	≥96dB
Directivity	Cardioid
Directionality	0°/135° : > 20 dB (1 kHz) 0°/180° : > 15 dB (1 kHz)
NFC Parameters	Support ISO14443 TYPE A standard, Mifare standard cards
Dimension(L×W×H)	Base: 140mm x 120mm x 65mm Rectangular Columnar Short Microphone: 220mm x 33mm x 27mm
Weight	1Kg

Wireless Basic Discussion Terminal (Gooseneck Microphone)

DCS-1023C-W/DCS-1023D-W



Wireless Discussion Chairman Terminal
DCS-1023C-W



Wireless Discussion Delegate Terminal
DCS-1023D-W

Features

- ◆ The terminal adopts a pluggable dual hose gooseneck microphone, available in various lengths, with status indicator. The microphone features a 14mm large diaphragm condenser capsule, ensuring clear sound pickup.
- ◆ With 4.3" touch screen display, support interface customization. Provide reusable physical speaking buttons, short press to turn on/off the microphone, long press to turn on the terminal. With key indicator, support dual-color display.
- ◆ The base adopts a square geometric design and can be used with a nameplate to display the name. Provide 1 way 3.5mm headphone jack with adjustable volume. Built-in rechargeable lithium battery, continuous use time (speaking status) ≥ 17 hours.
- ◆ Provide 1 way DC charging interface, support 12V2A DC charging. Charge with charging box. The terminal has a built-in power-down detection and protection circuit with functions of power monitoring, energy-saving control, low-voltage warning, and automatic shutdown protection (automatic shutdown protection for three consecutive minutes without signal).
- ◆ The terminal adopts WiFi wireless communication technology, which conforms to IEEE 802.11n network standard and supports 2.4GHz/5.2GHz/5.8GHz tri-band communication. It adopts 128-bit AES encryption technology and supports WEP/WPA/WPA2 wireless security technology to ensure the privacy of the meeting and avoid eavesdropping and malicious interference.
- ◆ Support independent sensitivity adjustment, allowing real-time adjustment of pickup distance based on the speaker's posture and ambient noise levels.
- ◆ Support multiple speaking modes: FIFO, Auto, Operator, VOX, PTT, Request, Time-limited (requires software integration)
- ◆ Any delegate terminal can be set as the vice-chairman terminal. There is no limit to the number of chairman/vice-chairman terminals in the system. The chairman has all the functions of the delegate, but also has the following functions:
 - Support unrestricted microphone activation, not limited by the number of activations or software control restrictions.
 - Has a speech interruption key to deactivate the microphone of a delegate terminal currently speaking.
 - With speech control function, it can control the microphone on and off through the touch screen (specified models).
- ◆ The terminal offers a service call function, allowing users to tap on icons such as tea, paper, pen, or help on the touch screen to request services from the system backend (it needs to be used with the call service software).

Technical Parameters

Operating Frequency	2.4GHz/5.2GHz/5.8GHz
Battery Capacity	6700mAh
Audio Frequency Response	20Hz ~ 20KHz
Sensitivity	-46 dBV/Pa
Equivalent Noise Level	20dBA (SPL)
Maximum Sound Pressure Level	125dB (THD < 3%)
Total Harmonic Distortion	< 0.05%
Signal-to-Noise Ratio	≥96dB
Directivity	Cardioid
Directionality	0°/135° : > 20 dB (1 kHz) 0°/180° : > 15 dB (1 kHz)
Dimension(L×W×H)	Base: 140mm x 120mm x 65mm Gooseneck: 410mm (standard)
Weight	1Kg

Wireless Discussion Terminal with Voting and Interpretation(Gooseneck Microphone)
DCS-1023CF-W/DCS-1023DF-W



Wireless Chairman Terminal
with Discussion ,Voting and Interpretation
DCS-1023CF-W



Wireless Delegate Terminal
with Discussion ,Voting and Interpretation
DCS-1023DF-W

Features

- ◆ The terminal adopts a pluggable dual hose gooseneck microphone, available in various lengths, with status indicator. The microphone features a 14mm large diaphragm condenser capsule, ensuring clear sound pickup.
- ◆ With 4.3" touch screen display, support interface customization. Provide reusable physical speaking buttons, short press to turn on/off the microphone, long press to turn on the terminal. With key indicator, support dual-color display.
- ◆ The base adopts a square geometric design and can be used with a nameplate to display the name. Provide 1 way 3.5mm headphone jack with adjustable volume. Built-in rechargeable lithium battery, continuous use time (speaking status) ≥ 17 hours.
- ◆ Provide 1 way DC charging interface, support 12V2A DC charging. Charge with charging box. The terminal has a built-in power-down detection and protection circuit with functions of power monitoring, energy-saving control, low-voltage warning, and automatic shutdown protection (automatic shutdown protection for three consecutive minutes without signal).

- ◆ The terminal adopts WiFi wireless communication technology, which conforms to IEEE 802.11n network standard and supports 2.4GHz/5.2GHz/5.8GHz tri-band communication. It adopts 128-bit AES encryption technology and supports WEP/WPA/WPA2 wireless security technology to ensure the privacy of the meeting and avoid eavesdropping and malicious interference.
- ◆ Support independent sensitivity adjustment, allowing real-time adjustment of pickup distance based on the speaker's posture and ambient noise levels.
- ◆ Support multiple speaking modes: FIFO, Auto, Operator, VOX, PTT, Request, Time-limited (requires software integration)
- ◆ Any delegate terminal can be set as the vice-chairman terminal. There is no limit to the number of chairman/vice-chairman terminals in the system. The chairman has all the functions of the delegate, but also has the following functions:
 - Support unrestricted microphone activation, not limited by the number of activations or software control restrictions.
 - Has a speech interruption key to deactivate the microphone of a delegate terminal currently speaking.
 - With speech control function, it can control the microphone on and off through the touch screen (specified models).
- ◆ With monitoring function. Built-in speaker with adjustable volume. When the microphone is turned on, the speaker of this machine is automatically turned off to prevent the sound from whistling back. Built-in NFC module, support with NFC devices, NFC card for close range wireless communication.
- ◆ With simultaneous interpretation channel selector, the audio frequency response of the simultaneous interpretation channel can be up to 20Hz~20kHz, which can realize the function of 32-channel simultaneous interpretation (including the floor channel).
- ◆ Supports quick voting without the need for pre-entering topics and voting options. Voting can be initiated instantly. When used with software, it can provide various registration and voting functions.
- ◆ The terminal provides a variety of standby interfaces, including clock, flag, pattern, name and so on. Support meeting content display, displaying current meeting information. Support QR code display, can scan the code to get the information file.
- ◆ The terminal offers a service call function, allowing users to tap on icons such as tea, paper, pen, or help on the touch screen to request services from the system backend (it needs to be used with the call service software).

Technical Parameters

Operating Frequency	2.4GHz/5.2GHz/5.8GHz
Battery Capacity	6700mAh
Audio Frequency Response	20Hz ~ 20KHz
Sensitivity	-46 dBV/Pa
Equivalent Noise Level	20dBA (SPL)
Maximum Sound Pressure Level	125dB (THD < 3%)
Total Harmonic Distortion	< 0.05%
Signal-to-Noise Ratio	≥96dB
Directivity	Cardioid
Directionality	0°/135° : > 20 dB (1 kHz) 0°/180° : > 15 dB (1 kHz)
NFC Parameters	Support ISO14443 TYPE A standard, Mifare standard cards
Dimension(L×W×H)	Base: 140mm x 120mm x 65mm Gooseneck: 410mm (standard)
Weight	1Kg

Wireless Basic Discussion Terminal

DCS-1024C-W/DCS-1024D-W



Wireless Discussion Chairman Terminal
DCS-1024C-W



Wireless Discussion Delegate Terminal
DCS-1024D-W

Features

- ◆ The terminal adopts metal material with dual rectangular columnar short microphones, with dual-color status indicator, supporting status color setting. With a maximum adjustable tilt angle of 55° and built-in windproof cotton and a cavity pickup structure.
- ◆ With 4.3" touch screen display, support interface customization. Provide reusable physical speaking buttons, short press to turn on/off the microphone, long press to turn on the terminal. With key indicator, support dual-color display.
- ◆ The base adopts a square geometric design and can be used with a nameplate to display the name. Provide 1 way 3.5mm headphone jack with adjustable volume. Built-in rechargeable lithium battery, continuous use time (speaking status) ≥ 17 hours.
- ◆ Provide 1 way DC charging interface, support 12V2A DC charging. Charge with charging box. The terminal has a built-in power-down detection and protection circuit with functions of power monitoring, energy-saving control, low-voltage warning, and automatic shutdown protection (automatic shutdown protection for three consecutive minutes without signal).
- ◆ The terminal adopts WiFi wireless communication technology, which conforms to IEEE 802.11n network standard and supports 2.4GHz/5.2GHz/5.8GHz tri-band communication. It adopts 128-bit AES encryption technology and supports WEP/WPA/WPA2 wireless security technology to ensure the privacy of the meeting and avoid eavesdropping and malicious interference.
- ◆ Support independent sensitivity adjustment, allowing real-time adjustment of pickup distance based on the speaker's posture and ambient noise levels.
- ◆ Support multiple speaking modes: FIFO, Auto, Operator, VOX, PTT, Request, Time-limited (requires software integration)
- ◆ Any delegate terminal can be set as the vice-chairman terminal. There is no limit to the number of chairman/vice-chairman terminals in the system. The chairman has all the functions of the delegate, but also has the following functions:
 - Support unrestricted microphone activation, not limited by the number of activations or software control restrictions.
 - Has a speech interruption key to deactivate the microphone of a delegate terminal currently speaking.
 - With speech control function, it can control the microphone on and off through the touch screen (specified models).
- ◆ The terminal offers a service call function, allowing users to tap on icons such as tea, paper, pen, or help on the touch screen to request services from the system backend (it needs to be used with the call service software).

Technical Parameters

Operating Frequency	2.4GHz/5.2GHz/5.8GHz
Battery Capacity	6700mAh
Audio Frequency Response	20Hz ~ 20KHz
Sensitivity	-46 dBV/Pa
Equivalent Noise Level	20dBA (SPL)
Maximum Sound Pressure Level	125dB (THD < 3%)
Total Harmonic Distortion	< 0.05%
Signal-to-Noise Ratio	≥96dB
Directivity	Cardioid
Directionality	0°/135° : > 20 dB (1 kHz) 0°/180° : > 15 dB (1 kHz)
Dimension(L×W×H)	Base: 140mm x 120mm x 65mm Rectangular Columnar Short Microphone: 220mm x 33mm x 27mm
Weight	1Kg

■ Wireless Discussion Terminal with Voting and Interpretation DCS-1024CF-W/DCS-1024DF-W



Wireless Chairman Terminal
with Discussion ,Voting and Interpretation
DCS-1024CF-W



Wireless Delegate Terminal
with Discussion ,Voting and Interpretation
DCS-1024DF-W

Features

- ◆ The terminal adopts metal material with dual rectangular columnar short microphones, with dual-color status indicator, supporting status color setting. With a maximum adjustable tilt angle of 55° and built-in windproof cotton and a cavity pickup structure.
- ◆ With 4.3" touch screen display, support interface customization. Provide reusable physical speaking buttons, short press to turn on/off the microphone, long press to turn on the terminal. With key indicator, support dual-color display.
- ◆ The base adopts a square geometric design and can be used with a nameplate to display the name. Provide 1 way 3.5mm headphone jack with adjustable volume. Built-in rechargeable lithium battery, continuous use time (speaking status) ≥ 17 hours.
- ◆ Provide 1 way DC charging interface, support 12V2A DC charging. Charge with charging box. The terminal has a built-in power-down detection and protection circuit with functions of power monitoring, energy-saving control, low-voltage warning, and automatic shutdown protection (automatic shutdown protection for three consecutive minutes without signal).

- ◆ The terminal adopts WiFi wireless communication technology, which conforms to IEEE 802.11n network standard and supports 2.4GHz/5.2GHz/5.8GHz tri-band communication. It adopts 128-bit AES encryption technology and supports WEP/WPA/WPA2 wireless security technology to ensure the privacy of the meeting and avoid eavesdropping and malicious interference.
- ◆ Support independent sensitivity adjustment, allowing real-time adjustment of pickup distance based on the speaker's posture and ambient noise levels.
- ◆ Support multiple speaking modes: FIFO, Auto, Operator, VOX, PTT, Request, Time-limited (requires software integration)
- ◆ Any delegate terminal can be set as the vice-chairman terminal. There is no limit to the number of chairman/vice-chairman terminals in the system. The chairman has all the functions of the delegate, but also has the following functions:
 - Support unrestricted microphone activation, not limited by the number of activations or software control restrictions.
 - Has a speech interruption key to deactivate the microphone of a delegate terminal currently speaking.
 - With speech control function, it can control the microphone on and off through the touch screen (specified models).
- ◆ With monitoring function. Built-in speaker with adjustable volume. When the microphone is turned on, the speaker of this machine is automatically turned off to prevent the sound from whistling back. Built-in NFC module, support with NFC devices, NFC card for close range wireless communication.
- ◆ With simultaneous interpretation channel selector, the audio frequency response of the simultaneous interpretation channel can be up to 20Hz~20kHz, which can realize the function of 32-channel simultaneous interpretation (including the floor channel).
- ◆ Supports quick voting without the need for pre-entering topics and voting options. Voting can be initiated instantly. When used with software, it can provide various registration and voting functions.
- ◆ The terminal provides a variety of standby interfaces, including clock, flag, pattern, name and so on. Support meeting content display, displaying current meeting information. Support QR code display, can scan the code to get the information file.
- ◆ The terminal offers a service call function, allowing users to tap on icons such as tea, paper, pen, or help on the touch screen to request services from the system backend (it needs to be used with the call service software).

Technical Parameters

Operating Frequency	2.4GHz/5.2GHz/5.8GHz
Battery Capacity	6700mAh
Audio Frequency Response	20Hz ~ 20KHz
Sensitivity	-46 dBV/Pa
Equivalent Noise Level	20dBA (SPL)
Maximum Sound Pressure Level	125dB (THD < 3%)
Total Harmonic Distortion	< 0.05%
Signal-to-Noise Ratio	≥96dB
Directivity	Cardioid
Directionality	0°/135° : > 20 dB (1 kHz) 0°/180° : > 15 dB (1 kHz)
NFC Parameters	Support ISO14443 TYPE A standard, Mifare standard cards
Dimension(L×W×H)	Base: 140mm x 120mm x 65mm Rectangular Columnar Short Microphone: 220mm x 33mm x 27mm
Weight	1Kg

Basic Discussion Terminal

DCS-2043C/DCS-2043D



Chairman Discussion Terminal
DCS-2043C



Delegate Discussion Terminal
DCS-2043D



Features

- ◆ The terminal adopts metal material with a fixed rectangular columnar short microphone, with dual-color status indicator, supporting status color setting. With a maximum adjustable tilt angle of 80° and built-in windproof cotton and a cavity pickup structure.
- ◆ The rectangular columnar short microphone has a digital and analog dual backup function. The microphone is built-in two sets of independent audio circuits, providing a network cable interface and 48V phantom power supply interface, supporting the digital system and analog system work and output at the same time. When one set of system failure will not affect the other set of system audio output.
- ◆ With OLED screen to display terminal information, support clock display, can automatically synchronize the system time. Provide physical speaking buttons, with three-color LED indicator to show the microphone working status.
- ◆ The base adopts a triangular geometric design, cast from integrated zinc alloy. Provide 1 way 3.5mm microphone jack with adjustable volume. Provide 2-way terminal interface, support hand-in-hand, star, hybrid three kinds of connection mode, support line hot-plug. The output port has an anti-loosening design and supports bottom line output, with the option for hidden or non-hidden installation.
- ◆ Support independent sensitivity adjustment, allowing real-time adjustment of pickup distance based on the speaker's posture and ambient noise levels.
- ◆ Support multiple speaking modes: FIFO, Auto, Operator, VOX, PTT, Request, Time-limited (requires software integration)
- ◆ Any delegate terminal can be set as the vice-chairman terminal. There is no limit to the number of chairman/vice-chairman terminals in the system. The chairman has all the functions of the delegate, but also has the following functions:
 - Support unrestricted microphone activation, not limited by the number of activations or software control restrictions.
 - Has a speech interruption key to deactivate the microphone of a delegate terminal currently speaking.
- ◆ With monitoring function. Built-in speaker with adjustable volume. When the microphone is activated, the speaker of microphone automatically mutes to prevent feedback and howling. Built-in card reader module, supporting contact IC card recognition.

Technical Parameters

Audio Frequency Response	20Hz ~ 20KHz
Sensitivity	-46 dBV/Pa
Equivalent Noise Level	20dBA (SPL)
Maximum Sound Pressure Level	139dB (THD < 3%)
Total Harmonic Distortion	< 0.05%
Signal-to-Noise Ratio	≥96dB
Directional Characteristics	Cardioid
Directionality	0°/135° : > 20 dB (1 kHz) 0°/180° : > 15 dB (1 kHz)
Dimension(L×W×H)	Base: 145mm×170mm×71mm Rectangular Columnar Short Microphone: 240mm×36mm×31mm
Weight	1.06Kg

Discussion Terminal with Voting and Interpretation
DCS-2043CF/DCS-2043DF



Chairman Terminal
with Discussion ,Voting and Interpretation
DCS-2043CF



Delegate Terminal
with Discussion ,Voting and Interpretation
DCS-2043DF

Features

- ◆ The terminal adopts metal material with a fixed rectangular columnar short microphone, with dual-color status indicator, supporting status color setting. With a maximum adjustable tilt angle of 80° and built-in windproof cotton and a cavity pickup structure.
- ◆ The rectangular columnar short microphone has a digital and analog dual backup function. The microphone is built-in two sets of independent audio circuits, providing a network cable interface and 48V phantom power supply interface, supporting the digital system and analog system work and output at the same time. When one set of system failure will not affect the other set of system audio output.
- ◆ With OLED screen to display terminal information, support clock display, can automatically synchronize the system time. Provide physical speaking buttons, with three-color LED indicator to show the microphone working status.
- ◆ The base adopts a triangular geometric design, cast from integrated zinc alloy. Provide 1 way 3.5mm microphone jack with adjustable volume. Provide 2-way terminal interface, support hand-in-hand, star, hybrid three kinds of connection mode, support line hot-plug. The output port has an anti-loosening design and supports bottom line output, with the option for hidden or non-hidden installation.

- ◆ Support independent sensitivity adjustment, allowing real-time adjustment of pickup distance based on the speaker's posture and ambient noise levels.
- ◆ Support multiple speaking modes: FIFO, Auto, Operator, VOX, PTT, Request, Time-limited (requires software integration)
- ◆ Any delegate terminal can be set as the vice-chairman terminal. There is no limit to the number of chairman/vice-chairman terminals in the system. The chairman has all the functions of the delegate, but also has the following functions:
 - Support unrestricted microphone activation, not limited by the number of activations or software control restrictions.
 - Has a speech interruption key to deactivate the microphone of a delegate terminal currently speaking.
- ◆ With monitoring function. Built-in speaker with adjustable volume. When the microphone is activated, the speaker of microphone automatically mutes to prevent feedback and howling. Built-in card reader module, supporting contact IC card recognition.
- ◆ With simultaneous interpretation channel selector, the audio frequency response of the simultaneous interpretation channel can be up to 20Hz~20kHz, which can realize the function of 32-channel simultaneous interpretation (including the floor channel).
- ◆ When used with software, it can provide various registration and voting functions.

Technical Parameters

Audio Frequency Response	20Hz ~ 20KHz
Sensitivity	-46 dBV/Pa
Equivalent Noise Level	20dBA (SPL)
Maximum Sound Pressure Level	139dB (THD < 3%)
Total Harmonic Distortion	< 0.05%
Signal-to-Noise Ratio	≥96dB
Directional Characteristics	Cardioid
Directionality	0°/135° : > 20 dB (1 kHz) 0°/180° : > 15 dB (1 kHz)
Dimension(L×W×H)	Base: 145mm×170mm×71mm Rectangular Columnar Short Microphone: 240mm×36mm×31mm
Weight	1.06Kg



Basic Discussion Terminal(Gooseneck Microphone)

DCS-2043C/DCS-2043D



Chairman Discussion Terminal
DCS-2043C



Delegate Discussion Terminal
DCS-2043D

Features

- ◆ The terminal adopts a pluggable dual hose gooseneck microphone, available in various lengths, with status indicator.
- ◆ With OLED screen to display terminal information, support clock display, can automatically synchronize the system time. Provide physical speaking buttons, with three-color LED indicator to show the microphone working status.
- ◆ The base adopts a triangular geometric design, cast from integrated zinc alloy. Provide 1 way 3.5mm microphone jack with adjustable volume. Provide 2-way terminal interface, support hand-in-hand, star, hybrid three kinds of connection mode, support line hot-plug. The output port has an anti-loosening design and supports bottom line output, with the option for hidden or non-hidden installation.
- ◆ Support independent sensitivity adjustment, allowing real-time adjustment of pickup distance based on the speaker's posture and ambient noise levels.
- ◆ Support multiple speaking modes: FIFO, Auto, Operator, VOX, PTT, Request, Time-limited (requires software integration)
- ◆ Any delegate terminal can be set as the vice-chairman terminal. There is no limit to the number of chairman/vice-chairman terminals in the system. The chairman has all the functions of the delegate, but also has the following functions:
 - Support unrestricted microphone activation, not limited by the number of activations or software control restrictions.
 - Has a speech interruption key to deactivate the microphone of a delegate terminal currently speaking.
- ◆ With monitoring function. Built-in speaker with adjustable volume. When the microphone is activated, the speaker of microphone automatically mutes to prevent feedback and howling. Built-in card reader module, supporting contact IC card recognition.

Technical Parameters

Audio Frequency Response	20Hz ~ 20KHz
Sensitivity	-46 dBV/Pa
Equivalent Noise Level	20dBA (SPL)
Maximum Sound Pressure Level	139dB (THD < 3%)
Total Harmonic Distortion	< 0.05%
Signal-to-Noise Ratio	≥96dB
Directional Characteristics	Cardioid
Directionality	0°/135° : > 20 dB (1 kHz) 0°/180° : > 15 dB (1 kHz)
Dimension(L×W×H)	Base: 145mm×170mm×71mm Gooseneck: 410mm (standard)
Weight	1.06Kg

Discussion Terminal with Voting and Interpretation (Gooseneck Microphone) DCS-2043CF/DCS-2043DF



Chairman Terminal
with Discussion ,Voting and Interpretation
DCS-2043CF



Delegate Terminal
with Discussion ,Voting and Interpretation
DCS-2043DF

Features

- ◆ The terminal adopts a pluggable dual hose gooseneck microphone, available in various lengths, with status indicator.
- ◆ With OLED screen to display terminal information, support clock display, can automatically synchronize the system time. Provide physical speaking buttons, with three-color LED indicator to show the microphone working status.
- ◆ The base adopts a triangular geometric design, cast from integrated zinc alloy. Provide 1 way 3.5mm microphone jack with adjustable volume. Provide 2-way terminal interface, support hand-in-hand, star, hybrid three kinds of connection mode, support line hot-plug. The output port has an anti-loosening design and supports bottom line output, with the option for hidden or non-hidden installation.

- ◆ Support independent sensitivity adjustment, allowing real-time adjustment of pickup distance based on the speaker's posture and ambient noise levels.
- ◆ Support multiple speaking modes: FIFO, Auto, Operator, VOX, PTT, Request, Time-limited (requires software integration)
- ◆ Any delegate terminal can be set as the vice-chairman terminal. There is no limit to the number of chairman/vice-chairman terminals in the system. The chairman has all the functions of the delegate, but also has the following functions:
 - Support unrestricted microphone activation, not limited by the number of activations or software control restrictions.
 - Has a speech interruption key to deactivate the microphone of a delegate terminal currently speaking.
- ◆ With monitoring function. Built-in speaker with adjustable volume. When the microphone is activated, the speaker of microphone automatically mutes to prevent feedback and howling. Built-in card reader module, supporting contact IC card recognition.
- ◆ With simultaneous interpretation channel selector, the audio frequency response of the simultaneous interpretation channel can be up to 20Hz~20kHz, which can realize the function of 32-channel simultaneous interpretation (including the floor channel).
- ◆ When used with software, it can provide various registration and voting functions.

Technical Parameters

Audio Frequency Response	20Hz ~ 20KHz
Sensitivity	-46 dBV/Pa
Equivalent Noise Level	20dBA (SPL)
Maximum Sound Pressure Level	139dB (THD < 3%)
Total Harmonic Distortion	< 0.05%
Signal-to-Noise Ratio	≥96dB
Directional Characteristics	Cardioid
Directionality	0°/135° : > 20 dB (1 kHz) 0°/180° : > 15 dB (1 kHz)
Dimension(L×W×H)	Base: 145mm×170mm×71mm Gooseneck: 410mm (standard)
Weight	1.06Kg



Basic Discussion Terminal

DCS-2044C/DCS-2044D



Chairman Discussion Terminal
DCS-2044C



Delegate Discussion Terminal
DCS-2044D

Features

- ◆ The terminal adopts metal material with a fixed rectangular columnar short microphone, with dual-color status indicator, supporting status color setting. With a maximum adjustable tilt angle of 55° and built-in windproof cotton and a cavity pickup structure.
- ◆ The rectangular columnar short microphone has a digital and analog dual backup function. The microphone is built-in two sets of independent audio circuits, providing a network cable interface and 48V phantom power supply interface, supporting the digital system and analog system work and output at the same time. When one set of system failure will not affect the other set of system audio output.
- ◆ Base model: Equipped with fingerprint-resistant frosted lenses. Provides physical speaking buttons with button indicator lights, supporting dual-color display.
- ◆ The base adopts a square geometric design, cast from integrated zinc alloy, and can be used with nameplate to display name. Provide 1 way 3.5mm headphone jack with adjustable volume. Provide 2-way terminal interface, support hand-in-hand, star, hybrid three kinds of connection mode, support line hot-plug. The output port has an anti-loosening design and supports bottom line output, with the option for hidden or non-hidden installation.
- ◆ Support independent sensitivity adjustment, allowing real-time adjustment of pickup distance based on the speaker's posture and ambient noise levels.
- ◆ Support multiple speaking modes: FIFO, Auto, Operator, VOX, PTT, Request, Time-limited (requires software integration)
- ◆ Any delegate terminal can be set as the vice-chairman terminal. There is no limit to the number of chairman/vice-chairman terminals in the system. The chairman has all the functions of the delegate, but also has the following functions:
 - Support unrestricted microphone activation, not limited by the number of activations or software control restrictions.
 - Has a speech interruption key to deactivate the microphone of a delegate terminal currently speaking.
 - With speech control function, it can control the microphone on and off through the touch screen (specified models).

Technical Parameters

Audio Frequency Response	20Hz ~ 20KHz
Sensitivity	-46 dBV/Pa
Equivalent Noise Level	20dBA (SPL)
Maximum Sound Pressure Level	139dB (THD < 3%)
Total Harmonic Distortion	< 0.05%
Signal-to-Noise Ratio	≥96dB
Directional Characteristics	Cardioid
Directionality	0°/135° : > 20 dB (1 kHz) 0°/180° : > 15 dB (1 kHz)
Dimension(L×W×H)	Base: 140mm×120mm×65mm Rectangular Columnar Short Microphone: 220mm×33mm×27mm
Weight	1.16Kg

Discussion Terminal with Voting and Interpretation
DCS-2044CF/DCS-2044DF



Chairman Terminal
with Discussion ,Voting and Interpretation
DCS-2044CF



Delegate Terminal
with Discussion ,Voting and Interpretation
DCS-2044DF

Features

- ◆ The terminal adopts metal material with a fixed rectangular columnar short microphone, with dual-color status indicator, supporting status color setting. With a maximum adjustable tilt angle of 55° and built-in windproof cotton and a cavity pickup structure.
- ◆ The rectangular columnar short microphone has a digital and analog dual backup function. The microphone is built-in two sets of independent audio circuits, providing a network cable interface and 48V phantom power supply interface, supporting the digital system and analog system work and output at the same time. When one set of system failure will not affect the other set of system audio output.
- ◆ With 4.3" touch screen display. Provides physical speaking keys with key indicators and supports two-color display.
- ◆ The base adopts a square geometric design, cast from integrated zinc alloy, and can be used with nameplate to display name. Provide 1 way 3.5mm headphone jack with adjustable volume. Provide 2-way terminal interface, support hand-in-hand, star, hybrid three kinds of connection mode, support line hot-plug. The output port has an anti-loosening design and supports bottom line output, with the option for hidden or non-hidden installation.

- ◆ Support independent sensitivity adjustment, allowing real-time adjustment of pickup distance based on the speaker's posture and ambient noise levels.
- ◆ Support multiple speaking modes: FIFO, Auto, Operator, VOX, PTT, Request, Time-limited (requires software integration)
- ◆ Any delegate terminal can be set as the vice-chairman terminal. There is no limit to the number of chairman/vice-chairman terminals in the system. The chairman has all the functions of the delegate, but also has the following functions:
 - Support unrestricted microphone activation, not limited by the number of activations or software control restrictions.
 - Has a speech interruption key to deactivate the microphone of a delegate terminal currently speaking.
 - With speech control function, it can control the microphone on and off through the touch screen (specified models).
 - With monitoring function. Built-in speaker with adjustable volume. When the microphone is turned on, the speaker of this machine is automatically turned off to prevent the sound from whistling back. Built-in NFC module, support with NFC devices, NFC card for close range wireless communication.
- ◆ With simultaneous interpretation channel selector, the audio frequency response of the simultaneous interpretation channel can be up to 20Hz~20kHz, which can realize the function of 32-channel simultaneous interpretation (including the floor channel).
- ◆ Supports quick voting without the need for pre-entering topics and voting options. Voting can be initiated instantly. When used with software, it can provide various registration and voting functions.
- ◆ The terminal offers a service call function, allowing users to tap on icons such as tea, paper, pen, or help on the touch screen to request services from the system backend (it needs to be used with the call service software).

Technical Parameters

Audio Frequency Response	20Hz ~ 20KHz
Sensitivity	-46 dBV/Pa
Equivalent Noise Level	20dBA (SPL)
Maximum Sound Pressure Level	139dB (THD < 3%)
Total Harmonic Distortion	< 0.05%
Signal-to-Noise Ratio	≥96dB
Directional Characteristics	Cardioid
Directionality	0°/135° : > 20 dB (1 kHz) 0°/180° : > 15 dB (1 kHz)
NFC Parameters	Support ISO14443 TYPE A standard, Mifare standard cards
Dimension(L×W×H)	Base: 140mm×120mm×65mm Rectangular Columnar Short Microphone: 220mm×33mm×27mm
Weight	1.16Kg



Basic Discussion Terminal (Gooseneck Microphone)

DCS-2044C/DCS-2044D



Chairman Discussion Terminal
DCS-2044C



Delegate Discussion Terminal
DCS-2044D

Features

- ◆ The terminal adopts a pluggable dual hose gooseneck microphone, available in various lengths, with status indicator.
- ◆ Base model: Equipped with fingerprint-resistant frosted lenses. Provides physical speaking buttons with button indicator lights, supporting dual-color display.
- ◆ The base adopts a square geometric design, cast from integrated zinc alloy, and can be used with nameplate to display name. Provide 1 way 3.5mm headphone jack with adjustable volume. Provide 2-way terminal interface, support hand-in-hand, star, hybrid three kinds of connection mode, support line hot-plug. The output port has an anti-loosening design and supports bottom line output, with the option for hidden or non-hidden installation.
- ◆ Support independent sensitivity adjustment, allowing real-time adjustment of pickup distance based on the speaker's posture and ambient noise levels.
- ◆ Support multiple speaking modes: FIFO, Auto, Operator, VOX, PTT, Request, Time-limited (requires software integration)
- ◆ Any delegate terminal can be set as the vice-chairman terminal. There is no limit to the number of chairman/vice-chairman terminals in the system. The chairman has all the functions of the delegate, but also has the following functions:
 - Support unrestricted microphone activation, not limited by the number of activations or software control restrictions.
 - Has a speech interruption key to deactivate the microphone of a delegate terminal currently speaking.
 - With speech control function, it can control the microphone on and off through the touch screen (specified models).

Technical Parameters

Audio Frequency Response	20Hz ~ 20KHz
Sensitivity	-46 dBV/Pa
Equivalent Noise Level	20dBA (SPL)
Maximum Sound Pressure Level	139dB (THD < 3%)
Total Harmonic Distortion	< 0.05%
Signal-to-Noise Ratio	≥96dB
Directional Characteristics	Cardioid
Directionality	0°/135° : > 20 dB (1 kHz) 0°/180° : > 15 dB (1 kHz)
Dimension(L×W×H)	Base: 140mm×120mm×65mm Gooseneck: 410mm (standard)
Weight	1.16Kg

Discussion Terminal with Voting and Interpretation (Gooseneck Microphone) DCS-2044CF/DCS-2044DF



Chairman Terminal
with Discussion ,Voting and Interpretation
DCS-2044CF



Delegate Terminal
with Discussion ,Voting and Interpretation
DCS-2044DF

Features

- ◆ The terminal adopts a pluggable dual hose gooseneck microphone, available in various lengths, with status indicator.
- ◆ With 4.3" touch screen display. Provides physical speaking keys with key indicators and supports two-color display.

- ◆ The base adopts a square geometric design, cast from integrated zinc alloy, and can be used with nameplate to display name. Provide 1 way 3.5mm headphone jack with adjustable volume. Provide 2-way terminal interface, support hand-in-hand, star, hybrid three kinds of connection mode, support line hot-plug. The output port has an anti-loosening design and supports bottom line output, with the option for hidden or non-hidden installation.
- ◆ Support independent sensitivity adjustment, allowing real-time adjustment of pickup distance based on the speaker's posture and ambient noise levels.
- ◆ Support multiple speaking modes: FIFO, Auto, Operator, VOX, PTT, Request, Time-limited (requires software integration)
- ◆ Any delegate terminal can be set as the vice-chairman terminal. There is no limit to the number of chairman/vice-chairman terminals in the system. The chairman has all the functions of the delegate, but also has the following functions:
 - Support unrestricted microphone activation, not limited by the number of activations or software control restrictions.
 - Has a speech interruption key to deactivate the microphone of a delegate terminal currently speaking.
 - With speech control function, it can control the microphone on and off through the touch screen (specified models).
 - With monitoring function. Built-in speaker with adjustable volume. When the microphone is turned on, the speaker of this machine is automatically turned off to prevent the sound from whistling back. Built-in NFC module, support with NFC devices, NFC card for close range wireless communication.
- ◆ With simultaneous interpretation channel selector, the audio frequency response of the simultaneous interpretation channel can be up to 20Hz~20kHz, which can realize the function of 32-channel simultaneous interpretation (including the floor channel).
- ◆ Supports quick voting without the need for pre-entering topics and voting options. Voting can be initiated instantly. When used with software, it can provide various registration and voting functions.
- ◆ The terminal offers a service call function, allowing users to tap on icons such as tea, paper, pen, or help on the touch screen to request services from the system backend (it needs to be used with the call service software).

Technical Parameters

Audio Frequency Response	20Hz ~ 20KHz
Sensitivity	-46 dBV/Pa
Equivalent Noise Level	20dBA (SPL)
Maximum Sound Pressure Level	139dB (THD < 3%)
Total Harmonic Distortion	< 0.05%
Signal-to-Noise Ratio	≥96dB
Directional Characteristics	Cardioid
Directionality	0°/135° : > 20 dB (1 kHz) 0°/180° : > 15 dB (1 kHz)
NFC Parameters	Support ISO14443 TYPE A standard, Mifare standard cards
Dimension(L×W×H)	Base: 140mm×120mm×65mm Gooseneck: 410mm (standard)
Weight	1.16Kg

■ Basic Discussion Terminal

DCS-2045C/DCS-2045D



Chairman Discussion Terminal
DCS-2045C



Delegate Discussion Terminal
DCS-2045D

Features

- ◆ The terminal adopts metal material with dual rectangular columnar short microphones, with dual-color status indicator, supporting status color setting. With a maximum adjustable tilt angle of 55° and built-in windproof cotton and a cavity pickup structure.
- ◆ The rectangular columnar short microphone has a digital and analog dual backup function. The microphone is built-in two sets of independent audio circuits, providing a network cable interface and 48V phantom power supply interface, supporting the digital system and analog system work and output at the same time. When one set of system failure will not affect the other set of system audio output.
- ◆ Base model: Equipped with fingerprint-resistant frosted lenses. Provides physical speaking buttons with button indicator lights, supporting dual-color display.
- ◆ The base adopts a square geometric design, cast from integrated zinc alloy, and can be used with nameplate to display name. Provide 1 way 3.5mm headphone jack with adjustable volume. Provide 2-way terminal interface, support hand-in-hand, star, hybrid three kinds of connection mode, support line hot-plug. The output port has an anti-loosening design and supports bottom line output, with the option for hidden or non-hidden installation.
- ◆ Support independent sensitivity adjustment, allowing real-time adjustment of pickup distance based on the speaker's posture and ambient noise levels.
- ◆ Support multiple speaking modes: FIFO, Auto, Operator, VOX, PTT, Request, Time-limited (requires software integration)
- ◆ Any delegate terminal can be set as the vice-chairman terminal. There is no limit to the number of chairman/vice-chairman terminals in the system. The chairman has all the functions of the delegate, but also has the following functions:
 - Support unrestricted microphone activation, not limited by the number of activations or software control restrictions.
 - Has a speech interruption key to deactivate the microphone of a delegate terminal currently speaking.
 - With speech control function, it can control the microphone on and off through the touch screen (specified models).

Technical Parameters

Audio Frequency Response	20Hz ~ 20KHz
Sensitivity	-46 dBV/Pa
Equivalent Noise Level	20dBA (SPL)
Maximum Sound Pressure Level	139dB (THD < 3%)
Total Harmonic Distortion	< 0.05%
Signal-to-Noise Ratio	≥96dB
Directional Characteristics	Cardioid
Directionality	0°/135° : > 20 dB (1 kHz) 0°/180° : > 15 dB (1 kHz)
Dimension(L×W×H)	Base: 140mm×120mm×65mm Rectangular Columnar Short Microphone: 220mm×33mm×27mm
Weight	1.16Kg

Discussion Terminal with Voting and Interpretation
DCS-2045CF/DCS-2045DF



Chairman Terminal
with Discussion ,Voting and Interpretation
DCS-2045CF



Delegate Terminal
with Discussion ,Voting and Interpretation
DCS-2045DF

Features

- ◆ The terminal adopts metal material with dual rectangular columnar short microphones, with dual-color status indicator, supporting status color setting. With a maximum adjustable tilt angle of 55° and built-in windproof cotton and a cavity pickup structure.
- ◆ The rectangular columnar short microphone has a digital and analog dual backup function. The microphone is built-in two sets of independent audio circuits, providing a network cable interface and 48V phantom power supply interface, supporting the digital system and analog system work and output at the same time. When one set of system failure will not affect the other set of system audio output.
- ◆ With 4.3" touch screen display. Provides physical speaking keys with key indicators and supports two-color display.

- ◆ The base adopts a square geometric design, cast from integrated zinc alloy, and can be used with nameplate to display name. Provide 1 way 3.5mm headphone jack with adjustable volume. Provide 2-way terminal interface, support hand-in-hand, star, hybrid three kinds of connection mode, support line hot-plug. The output port has an anti-loosening design and supports bottom line output, with the option for hidden or non-hidden installation.
- ◆ Support independent sensitivity adjustment, allowing real-time adjustment of pickup distance based on the speaker's posture and ambient noise levels.
- ◆ Support multiple speaking modes: FIFO, Auto, Operator, VOX, PTT, Request, Time-limited (requires software integration)
- ◆ Any delegate terminal can be set as the vice-chairman terminal. There is no limit to the number of chairman/vice-chairman terminals in the system. The chairman has all the functions of the delegate, but also has the following functions:
 - Support unrestricted microphone activation, not limited by the number of activations or software control restrictions.
 - Has a speech interruption key to deactivate the microphone of a delegate terminal currently speaking.
 - With speech control function, it can control the microphone on and off through the touch screen (specified models).
 - With monitoring function. Built-in speaker with adjustable volume. When the microphone is turned on, the speaker of this machine is automatically turned off to prevent the sound from whistling back. Built-in NFC module, support with NFC devices, NFC card for close range wireless communication.
- ◆ With simultaneous interpretation channel selector, the audio frequency response of the simultaneous interpretation channel can be up to 20Hz~20kHz, which can realize the function of 32-channel simultaneous interpretation (including the floor channel).
- ◆ Supports quick voting without the need for pre-entering topics and voting options. Voting can be initiated instantly. When used with software, it can provide various registration and voting functions.
- ◆ The terminal offers a service call function, allowing users to tap on icons such as tea, paper, pen, or help on the touch screen to request services from the system backend (it needs to be used with the call service software).

Technical Parameters

Audio Frequency Response	20Hz ~ 20KHz
Sensitivity	-46 dBV/Pa
Equivalent Noise Level	20dBA (SPL)
Maximum Sound Pressure Level	139dB (THD < 3%)
Total Harmonic Distortion	< 0.05%
Signal-to-Noise Ratio	≥96dB
Directional Characteristics	Cardioid
Directionality	0°/135° : > 20 dB (1 kHz)
	0°/180° : > 15 dB (1 kHz)
NFC Parameters	Support ISO14443 TYPE A standard, Mifare standard cards
Dimension(L×W×H)	Base: 140mm×120mm×65mm
	Rectangular Columnar Short Microphone: 220mm×33mm×27mm
Weight	1.16Kg

Basic Discussion Terminal

DCS-Q2057



Chairman Discussion Terminal
DCS-Q2057C



Delegate Discussion Terminal
DCS-Q2057D

Features

- ◆ Adopt a full metal panel design, supporting customizable panel sizes. Small in size, suitable for various embedded installation scenarios. Provides physical speaking buttons with status indicator lights.
- ◆ The terminal adopts a pluggable dual hose gooseneck microphone, available in various lengths, with status indicator. The microphone features a 14mm large diaphragm condenser capsule, ensuring clear sound pickup.
- ◆ Support independent sensitivity adjustment, allowing real-time adjustment of pickup distance based on the speaker's posture and ambient noise levels.
- ◆ Provide 1 way 5V terminal interface, can be connected to the connector or other functional terminals, support line hot plug.
- ◆ Support multiple speaking modes: FIFO, Auto, Operator, VOX, PTT, Request, Time-limited (requires software integration)
- ◆ Any delegate terminal can be set as the vice-chairman terminal. There is no limit to the number of chairman/vice-chairman terminals in the system. The chairman has all the functions of the delegate, but also has the following functions:
 - Support unrestricted microphone activation, not limited by the number of activations or software control restrictions.
 - Has a speech interruption key to deactivate the microphone of a delegate terminal currently speaking.

Technical Parameters

Audio Frequency Response	20Hz ~ 20KHz
Sensitivity	-46 dBV/Pa
Equivalent Noise Level	20dBA (SPL)
Maximum Sound Pressure Level	139dB (THD < 3%)
Total Harmonic Distortion	< 0.05%
Signal-to-Noise Ratio	≥96dB
Directional Characteristics	Cardioid
Directionality	0°/180° : >20dB (1kHz)
Dimensions	Panel(L×W×H):158mm×40mm×111.5mm Length of MIC Stem :410mm
Weight (L×W×H)	0.16Kg

Basic Discussion Delegate Terminal(Hand-held) DCS-Q2057D



Installation Effect

Features

- ◆ Hand-held model: Adopt a full metal hand-held microphone design with a spring cable connection, suitable for installation on chair armrests. Provide translucent silicone buttons with status indicator lights.
- ◆ Support independent sensitivity adjustment, allowing real-time adjustment of pickup distance based on the speaker's posture and ambient noise levels.
- ◆ Provide 1 way 5V terminal interface, can be connected to the connector or other functional terminals, support line hot plug.
- ◆ Support multiple speaking modes: FIFO, Auto, Operator, VOX, PTT, Request, Time-limited (requires software integration)

Technical Parameters

Audio Frequency Response	20Hz ~ 20KHz
Sensitivity	-46 dBV/Pa
Equivalent Noise Level	20dBA (SPL)
Maximum Sound Pressure Level	139dB (THD < 3%)
Total Harmonic Distortion	< 0.05%
Signal-to-Noise Ratio	≥96dB
Directional Characteristics	Cardioid
Directionality	0°/180° : >20dB (1kHz)
Dimensions (L×W×H)	φ27.8mm×216mm
Weight (L×W×H)	0.22Kg

32-Channel Terminal DCS-Q2057SI



Features

- ◆ Adopt a full metal panel design, supporting customizable panel sizes. Small in size, suitable for various embedded installation scenarios. With dual-digit digital tube to display simultaneous channel information and volume, 1-way 3.5mm headphone jack, provide physical buttons, simultaneous channel and volume adjustable.
- ◆ With simultaneous interpretation channel selector, the audio frequency response of the simultaneous interpretation channel can be up to 20Hz~20kHz, which can realize the function of 32-channel simultaneous interpretation (including the floor channel).
- ◆ Provide 1 way 5V power supply discussion interface to connect discussion module. Provide 2-way terminal interface, support hand-in-hand, star, hybrid three kinds of connection, support line hot plug.

Technical Parameters

Audio Frequency Response	20Hz ~ 20KHz
Headphone Load	> 16Ω
Headphone Volume	10mW
Dimensions (L x W x H)	158mm×40mm×111.5mm
Weight	0.6Kg

Dual 32-Channel Terminal DCS-Q2057DI



Features

- ◆ Adopt a full metal panel design, supporting customizable panel sizes. Small in size, suitable for various embedded installation scenarios. With dual-digit digital tube to display simultaneous channel information and volume. With 2-way 3.5mm headphone jack, provide physical buttons, simultaneous interpretation channel and volume independently adjustable, support two users to share a terminal.
- ◆ With simultaneous interpretation channel selector, the audio frequency response of the simultaneous interpretation channel can be up to 20Hz~20kHz, which can realize the function of 32-channel simultaneous interpretation (including the floor channel).
- ◆ Provide 1 way 5V power supply discussion interface to connect discussion module. Provide 2-way terminal interface, support hand-in-hand, star, hybrid three kinds of connection, support line hot plug.

Technical Parameters

Audio Frequency Response	20Hz ~ 20KHz
Headphone Load	> 16Ω
Headphone Volume	10mW
Dimensions (L x W x H)	158mm×40mm×111.5mm
Weight	0.6Kg

Voting Terminal

DCS-Q2057V



Features

- ◆ Adopt a full metal panel design, supporting customizable panel sizes. Small in size, suitable for various embedded installation scenarios. Provide physical colored buttons for Yes/No/Abstain votes, with status indicator lights.
- ◆ When used with software, it can provide various registration and voting functions.
- ◆ Provide 1 way 5V power supply discussion interface to connect discussion module. Provide 2-way terminal interface, support hand-in-hand, star, hybrid three kinds of connection, support line hot plug.

Technical Parameters

Dimensions (L x W x H)	158mm×40mm×111.5mm
Weight	0.6Kg

Dual-chain Voting Terminal

DCS-Q2057DV



Features

- ◆ Adopt a full metal panel design, supporting customizable panel sizes. Small in size, suitable for various embedded installation scenarios. Provide physical colored buttons for Yes/No/Abstain votes, with status indicator lights.
- ◆ When used with software, it can provide various registration and voting functions.
- ◆ Provides 4 independent terminal interfaces divided into two groups, offering dual-chain connectivity capability. Built with two sets of independent processing and transmission systems, ensuring simultaneous operation and providing dual redundancy. Support hand-in-hand, star, hybrid three kinds of connection, support line hot plug.

Technical Parameters

Dimensions (L x W x H)	158mm×40mm×111.5mm
Weight	0.6Kg

Voting and Interpretation Terminal

DCS-Q2057VI



Features

- ◆ Adopt a full metal panel design, supporting customizable panel sizes. Small in size, suitable for various embedded installation scenarios. With dual-digit digital tube to display simultaneous channel information and volume. With 1-way 3.5mm headphone jack, simultaneous channel and volume adjustable. Provide physical colored buttons for Yes/No/Abstain votes, with status indicator lights.
- ◆ With simultaneous interpretation channel selector, the audio frequency response of the simultaneous interpretation channel can be up to 20Hz~20kHz, which can realize the function of 32-channel simultaneous interpretation (including the floor channel).
- ◆ When used with software, it can provide various registration and voting functions.
- ◆ Provide 1 way 5V power supply discussion interface to connect discussion module. Provide 2-way terminal interface, support hand-in-hand, star, hybrid three kinds of connection, support line hot plug.

Technical Parameters

Audio Frequency Response	20Hz ~ 20KHz
Headphone Load	> 16Ω
Headphone Volume	10mW
Dimensions (L x W x H)	158mm×40mm×111.5mm
Weight	0.6Kg

Connector

DCS-CON2057



Features

- ◆ With black full metal chassis design, sturdy and durable, with installation holes, supporting hidden installation.
- ◆ Provide 1 way 5V power supply discussion interface to connect discussion module. Provide 2-way terminal interface, support hand-in-hand, star, hybrid three kinds of connection, support line hot plug.

Technical Parameters

Dimensions (L x W x H)	158mm×40mm×111.5mm
Weight	0.4Kg

Congress Server

GONSIN10000N



Features

- ◆ Designed with black tempered glass panel with navigational knob, OLED screen displays system status, number of speakers, speaking modes and other information, providing multi-language menu.
- ◆ Support clock and date synchronized display. Support automatic/manual assignment of terminal ID. Support remote diagnosis and remote upgrade.
- ◆ Adopts full-digital audio technology, supports 48KHz audio sampling frequency, audio frequency response up to 20Hz~20kHz, supports automatic mixing, volume adjustment, equalization adjustment, sensitivity adjustment and other functions.
- ◆ Based on LINUX operating system platform development, support wired conference terminal and wireless conference terminal access to the same conference server. The default maximum number of simultaneous openings is 5 (wired)/4 (wireless). Support multi-chairman application and unlimited number of chairmen/vice-chairmen.
- ◆ Provide 2 network interfaces with PoE power supply capability. Support connection to devices such as wireless access points, switches, routers, and computers. Support SSID wireless network management, managing 128 wireless access points and 650 wireless terminals. Support one-click shutdown function to uniformly power off all wireless terminal devices.
- ◆ Provide a terminal interface with 4 channels and 24V power supply capability, support three connection modes: hand-in-hand, star and hybrid. Support dual-chain connection (specified model), which can provide two sets of mutually independent network communication system, and any one equipment failure or line failure of the whole system will not affect the work of the system.
- ◆ Provide 4-channel packet audio output interface. The system has a terminal grouping function, which can be used as a large system or split into up to 4 independent systems to meet the application requirements of space merging/splitting.
- ◆ Support external audio signal input, which can be connected to alarm audio, broadcast audio or third-party conference system, simultaneous interpretation system, public address, etc.
- ◆ Provide 1 channel USB interface on the front panel. Insert U disk (FAT32 format) to support manual/automatic audio recording, and display the recording status. When used with acquisition card and software, it can realize the function of recording and video.
- ◆ Provide connection interface for simultaneous interpretation equipment, which can be connected to the interpreter terminal and wireless simultaneous interpretation access point. The audio frequency response of the simultaneous interpretation channel can reach 20Hz~20KHz, and it can realize 6-channel (wireless conference terminal)/32-channel (wired conference terminal)/16-channel (wireless simultaneous interpretation receiver) simultaneous interpretation function (including original sound channel).
- ◆ Provide 1 channel AES67 network audio interface (specified model). The system complies with AES67 network audio standard, is compatible with Dante protocol, and supports channel management through Dante Controller software.

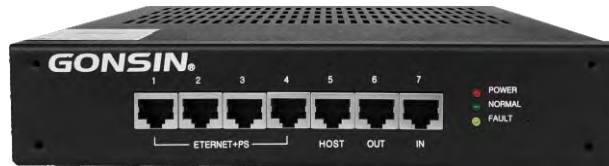
- ◆ Support multiple speaking modes: FIFO, Auto, Operator, VOX, PTT, Request, Time-limited (requires software integration)
- ◆ FIFO (First In First Out): When the number of activated microphones exceeds the system's limit, pressing the speaking key will activate the microphone and deactivate the earliest activated microphone.
- ◆ Auto: When the number of activated microphones exceeds the system's limit, pressing the speaking key will restrict microphone activation. Microphones can only be activated after previously activated microphones are deactivated.
- ◆ Operator: When the number of activated microphones exceeds the system's limit, pressing the speaking key will put the microphone into a waiting state. After the activated microphone turns off, the applied microphones will be activated automatically.
- ◆ VOX: When the microphone detects sound, it will automatically activate. When no sound is detected for a set period, the microphone will automatically deactivate. Sensitivity and automatic deactivation time can be adjusted. Manual activation and deactivation by a key are also supported.
- ◆ PTT(Push-to-Talk): Holding down the speaking key on a terminal will activate the microphone. Releasing the speaking key will deactivate the microphone.
- ◆ Request: When press the delegate terminal, the microphone enters a request state. Upon approval by the chairman terminal, microphones in the request state will automatically activate. The chairman/vice-chairman terminals can speak without needing approval.
- ◆ Time-limited (Requires Software Integration): When the microphone is activated, it enters a countdown state. When the countdown reaches zero, the microphone will automatically deactivate. The speaking countdown time can be adjusted.
- ◆ The congress server has a dual-server hot backup function. One conference server can be set to backup mode, when the main server fails, the backup server automatically takes over the work to ensure uninterrupted operation of the system.
- ◆ Management software with dual-computer hot backup function. One computer can be set as backup mode, when the main operating computer fails, the backup computer will automatically take over the work to ensure uninterrupted operation of the system.
- ◆ Built-in 8 in 4 out video matrix, support the connection of SD cameras. Support external HD matrix, switcher, HD camera, support multi-camera cascade. Support automatic camera tracking function, support panoramic view.
- ◆ With the upper computer management software (additional purchase required), it can realize the functions of meeting registration, meeting voting, discussion control and so on.
- ◆ With chairman screen tablet (additional purchase required), it can realize meeting registration, meeting voting, discussion control and other functions, to meet the application needs of portable control.
- ◆ With the call service management software/tablet (additional purchase required), it can check the service applications submitted by terminal devices and carry out service processing (it needs to be used with terminals with call service function).
- ◆ With Automatic Speech Recognition System (need to purchase separately), it can realize system audio role separation, voice transcription, voice translation, subtitle display, minutes output and other functions.
- ◆ With voice control system (additional purchase required), it can realize voice control function. Realize equipment control, task execution and other operations through voice speech. Support multiple scene quick call. Support wake-up word and command word customization.
- ◆ Support Web page management and client software management. Support access to the central control system, visual media interactive system, intelligent conference management platform, which can realize remote control, status monitoring, fault reminder and other functions.
- ◆ The power supply is designed with 100V~240V wide voltage input and built-in linear voltage regulator circuit for over-voltage protection. Built-in power management embedded software can monitor the voltage status of the equipment, reduce the equipment failure caused by voltage fluctuation, and realize all-weather protection.

Technical Parameters

Installation	Desktop or 19' cabinet installation
Device Interface	Balanced audio input interface (XLR) × 1
	Balanced audio output interface (XLR) × 1
	Unbalanced audio output interface (RCA) × 2
	Packet audio output interface (Phoenix terminal) × 4
	Control interface (RS-232) × 1
	Debugging interface (RS-232) × 1
	Camera tracking interface (RS-485) × 1
	Terminal interface (RJ45) × 4
	Network interface (RJ45) × 2
	Recording interface (USB) × 1
	Video input interface (RCA) × 8
	Video output interface (RCA) × 4
	AES67 network audio interface (RJ45) × 1
Audio Frequency Response	20Hz ~ 20KHz
Signal-to-Noise Ratio	>96dBA
Channel Isolation	>85dB
Dynamic Range	>94dB
Total Harmonic Distortion	<0.05%
Output Impedance	>1KΩ
Maximum Audio Output	LINE OUT (unbalanced): +20 dBu
	BLANCE OUT (balanced): +20 dBu
	MIXER OUT (balanced): +20 dBu
	AUDIO OUT 1 to 4 (balanced): +20 dBu
Maximum Power Consumption	300W
Power Supply	AC100 ~ 240V , 50/60Hz
Dimensions (L×W×H)	483mm×430mm×90mm
Weight	8.9Kg



Power Hub **HUB-P150S**



Features

- ◆ Adopt a black metal chassis design, with working status indicator, supporting hidden installation or cabinet installation, supporting to install 2 devices side by side (requires installation accessories).
- ◆ Provide 7-way network interfaces with 24V power supply capability to connect conference terminal, power HUB, conference server (need to connect according to the interface instruction). Supports three connection modes: ring hand-held, star-type and hybrid.
- ◆ Adopt distributed power supply management and support synchronized switching with the conference server. Built-in auto-detection mechanism, can automatically detect voltage, current and temperature status, support overload, high temperature automatic protection.
- ◆ Power supply adopts 100V~240V wide voltage input design, built-in linear voltage regulator circuit for over-voltage protection. Built-in power management embedded software can monitor the equipment voltage status, reduce the equipment failure caused by voltage fluctuation, and realize all-weather protection.

Technical Parameters

MTBF	≥ 10000 hours
Installation	Hidden installation or 19" cabinet installation (installation accessories required)
Device Interface	Terminal interface (RJ45) × 4 Cascade interface (RJ45) × 2 Server interface (RJ45) × 1
Max. number of mounts per unit	65 conference terminals (monitoring off) / 5 desktop paperless display terminals (The number of carriers varies according to the terminal model and line length)
Maximum Power Consumption	150W
Power Supply	AC100 ~ 240V, 50/60Hz
Dimension (L×W×H)	238mm×165mm×45mm
Weight	2Kg

Wireless AP

WAP-10D



Features

- ◆ Adopt WiFi wireless communication technology, compliant with IEEE 802.11b/g/n, IEEE 802.11ac/a/n network standards, built-in matrix smart antenna, wireless transmission rate up to 1167Mbps.
- ◆ MU-MIMO technology based on 802.11ac Wave2 specification, supports 2.4GHz/5.2GHz/5.8GHz tri-band communication. Built-in wireless frequency sweeping software to detect the wireless environment, frequency hopping and spreading in real-time wireless audio transmission system, and selecting clean frequency to work.
- ◆ Support SSID wireless network settings, support 128 wireless AP connection management, support multi-AP wireless coverage, support multiple systems in the same environment at the same time.
- ◆ Adopt 128-bit AES encryption technology, support WEP/WPA/WPA2 wireless security technology, ensure the privacy of the meeting, avoid eavesdropping and malicious interference.
- ◆ Provide 1 network interface to support PoE power supply, support conference servers or switches for PoE power supply, reducing the need for additional wiring.
- ◆ Support three installation methods: ceiling-mounted, wall-mounted, and desktop placement. adapting to different types of venues.

Technical Parameters

Operating Frequency	2.4GHz/5.2GHz/5.8GHz
Single AP Capacity	35 units
Wireless Signal Coverage	30 meters (stable communication distance)
Transmit power	≤20dBm
Adjustable Power Granularity	1dBm
Adjustable power range	1dBm
Working Power	PoE power supply (support 802.3af/802.3at) Power adapter (12V/2A)
Power Consumption	<13W
Protection class	IP41
Interface	Network interface (RJ45) × 1 Console interface (RJ45) × 1
Dimension (L×W×H)	196 mm×196 mm×45 mm
Weight	0.5Kg

Charging Cabinet CHG-10A

Features

- ◆ Up to 10 lithium batteries can be charged at the same time.
- ◆ Built-in linear voltage regulator circuit with over-voltage protection ensures safe and reliable charging process. Built-in power management embedded software, real-time management of battery power and charging current, to extend battery life.



Technical Parameters

Charging Time	5 hours
Working Voltage	AC100~240V, 50~60Hz
Wattage	150W
Dimension(L×W×H)	415mm×344mm×87mm
Weight (L×W×H)	6.7Kg

Charging Cabinet CHG-08



Features

- ◆ Up to 8 lithium batteries can be charged at the same time.
- ◆ Built-in linear voltage regulator circuit with over-voltage protection ensures safe and reliable charging process. Built-in power management embedded software, real-time management of battery power and charging current, to extend battery life.

Technical Parameters

Charging time	4 hours
Working Voltage	12V
Working Current	15A
Dimension(L×W×H)	605mm×346mm×46mm
Weight (L×W×H)	4.78Kg

Battery

BAT3300

Capacity	3000mAh
Nominal Voltage	11.1V
Charging Voltage	12.6V±0.03V
Standard	GB/T 18287-2000



Co-work with DCS-1022 Terminal

Non-Contacted IC Card

NTAG213

Card size (L×W×H)	85.6×54×0.8 mm
Card rounded corners	3mm
Operating temperature	5~40°C
Working humidity	35~85%RH



IC Card

BL7442

- ◆ Each card has a unique 32-bit serial number and independent password and access control. Users can set different password with software, one card for appointed conference.
- ◆ Data can be preserved up to 10 years and a card can be rewritten up to 100 thousand times with unlimited reading times.

Dimensions (LxWxD)	85.6x53.98x0.8mm
Operating temperature	-20°C~50°C



FR ID Reader

BR-101A

- ◆ Adopt 13.56MHz non-contact radio frequency technology, embedded NXP highly integrated read-write chip as radio frequency base station
- ◆ Support ISO14443 TYPE A standard/Mifare standard card
- ◆ Support USB to serial communication



Reader support	Mf0: Ultralight, Ultralight C, NTAG203, NTAG213 MF1: S50, S70, FM11RF08 and compatible cards
NFC parameters	Support ISO14443 TYPE A standard, Mifare standard card
Serial port protocol (UART)	Serial bit data (8), parity bit (none), stop bit (1), baud rate 19200
Volume	96×61mm

IC Card Encoder

SRD-U100

Support read out and write down information, reset password

Speed	<0.2s
Interface	USB
Installation	Flush-mounting



Cable

RJ45-0.3m/2m/5m/10m

Type	Straight-through Cable
Length	0.3m/2m/5m/10m
Jack	RJ-45 Metal Shielded Registered Jack



Power Supply Adapter

GM36-120250-D

Color	Black
Size(LxWxH)	87.8x45.2x30mm
Weight	144g
INPUT	AC100~240V , 50~60Hz
OUTPUT	DC12V2.5A



Stereo Headphone TC-D3

Color	Black
Type	Headband dual-channel headphone
Interface	3.5mm
Impedance	32Ω±15%
Frequency reponse range	20-20KHz
Voltage	0.8V
Input power	30-50mW
Distortion rate	<5%



Interpreter Headset TC-D4

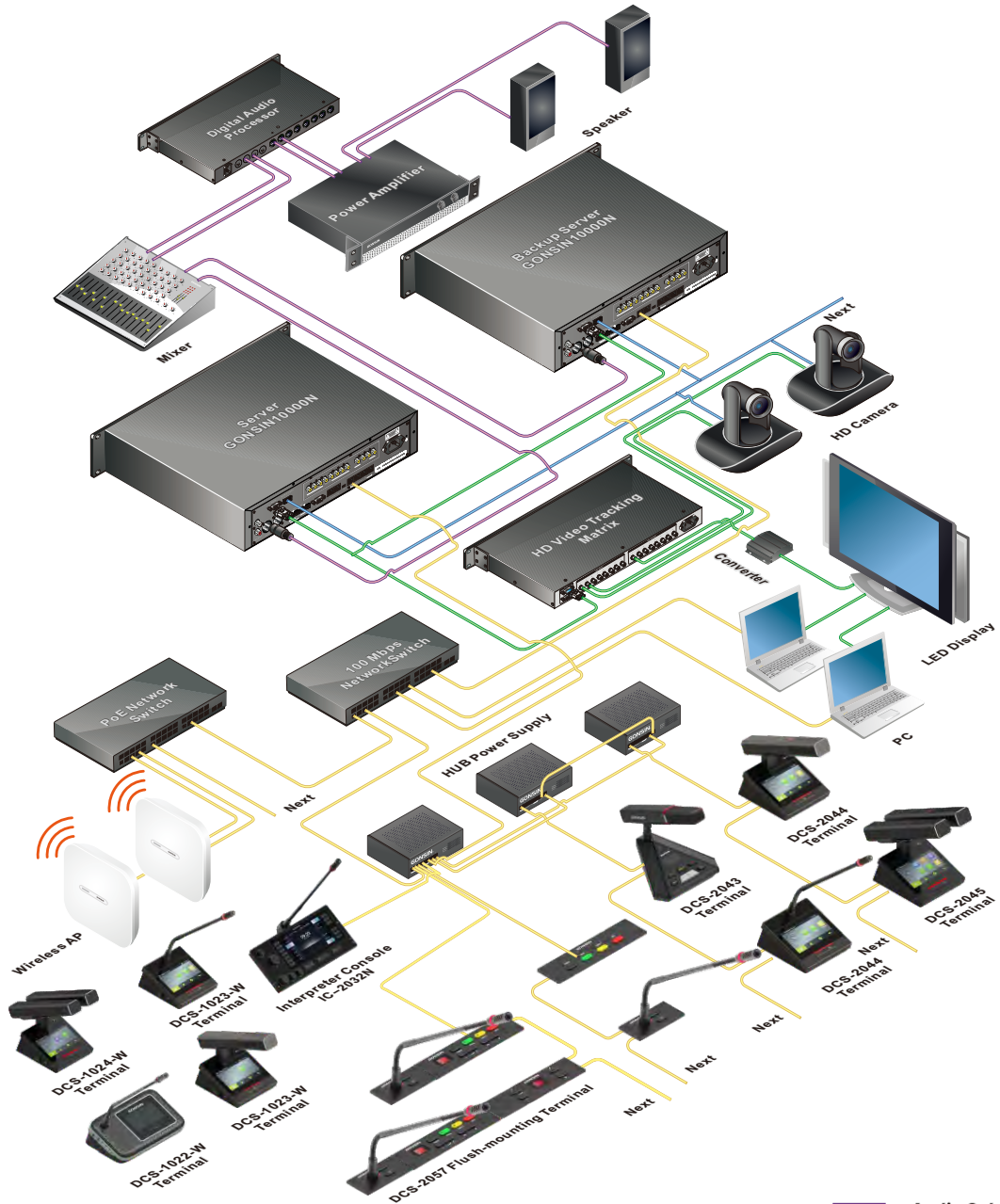
- ◆ Adopt ergonomic and lightweight design to reduce the pressure on the head when wearing the headset, making it comfortable to wear
- ◆ Support manual telescopic head beam to meet most human head shapes
- ◆ It has a high-definition noise-cancelling microphone, which can effectively prevent the interference of the surrounding environment, accurately pick up the sound, and record clearly
- ◆ Adopt 40MM classic speaker to drive the sound unit, so that the sound of the earphone is clear and lossless, bringing the original sound experience
- ◆ Adopt strong anti-violence material, resistant to pulling and folding
- ◆ Using long plastic straw, 150-degree angle adjustment, convenient for recording and pickup



Product Weight	180g
Microphone Specifications	
MIC	Diameter 6.5mm
Impedance	2200Ω
Sensitivity	-58dB±3dB
Directionality	Directivity
S/N ratio	Above 60dB
Frequency range	20Hz-20kHz
Operating voltage	4.5V

Headset Specifications	
Trumpet	Diameter 40mm
Impedance	32Ω
Sensitivity	105±3dB
Rated power	≥100mW
Frequency response	15Hz-30KHz
Wire length	2.2M
Volume adjustment	Gear tuning
Port	Dual 3.5mm ports

System Configuration



- Audio Cable
- Video Cable
- Network Cable
- 485 Control Cable

GONSIN CONFERENCE EQUIPMENT CO.,LTD.
www.gonsin.com



English Wechat



All rights reserved. The information and specifications included are subject to change without prior notice.